

You Are Reading . . .

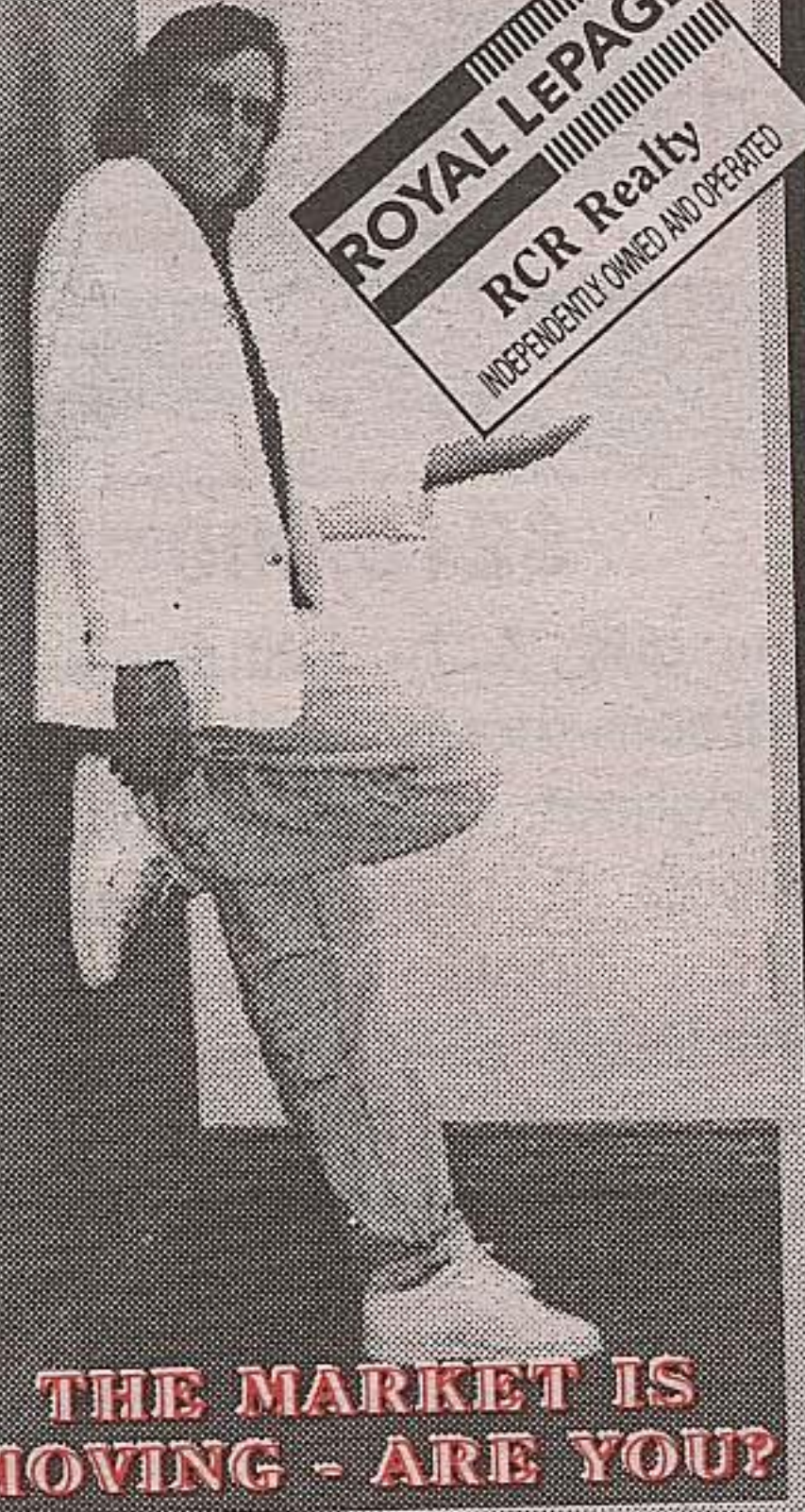
THE MARKET IS MOVING - ARE YOU?

ROYAL LEPAGE RCR Realty
INDEPENDENTLY OWNED AND OPERATED
Country Specialists

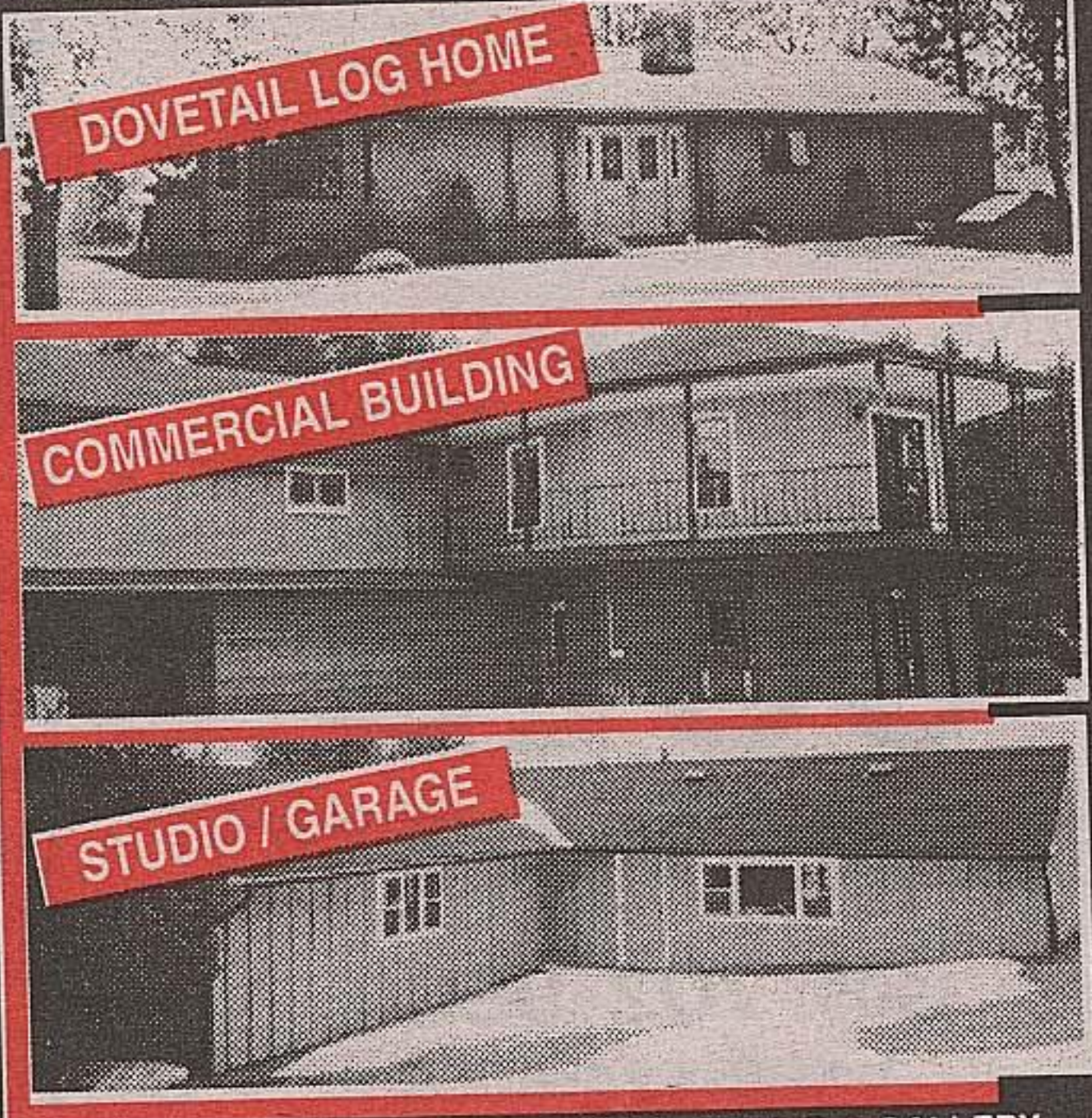
Country Specialists **Wayne Baguley*** SALES REP.*
(905) 450-3355 or (519) 941-5151

Summer is warming up for a great Fall market. LIST NOW!!

WAYNE BAGULEY WAYNE BAGULEY WAYNE BAGULEY WAYNE BAGULEY WAYNE BAGULEY WAYNE BAGULEY WAYNE BAGULEY



THE MARKET IS MOVING - ARE YOU?

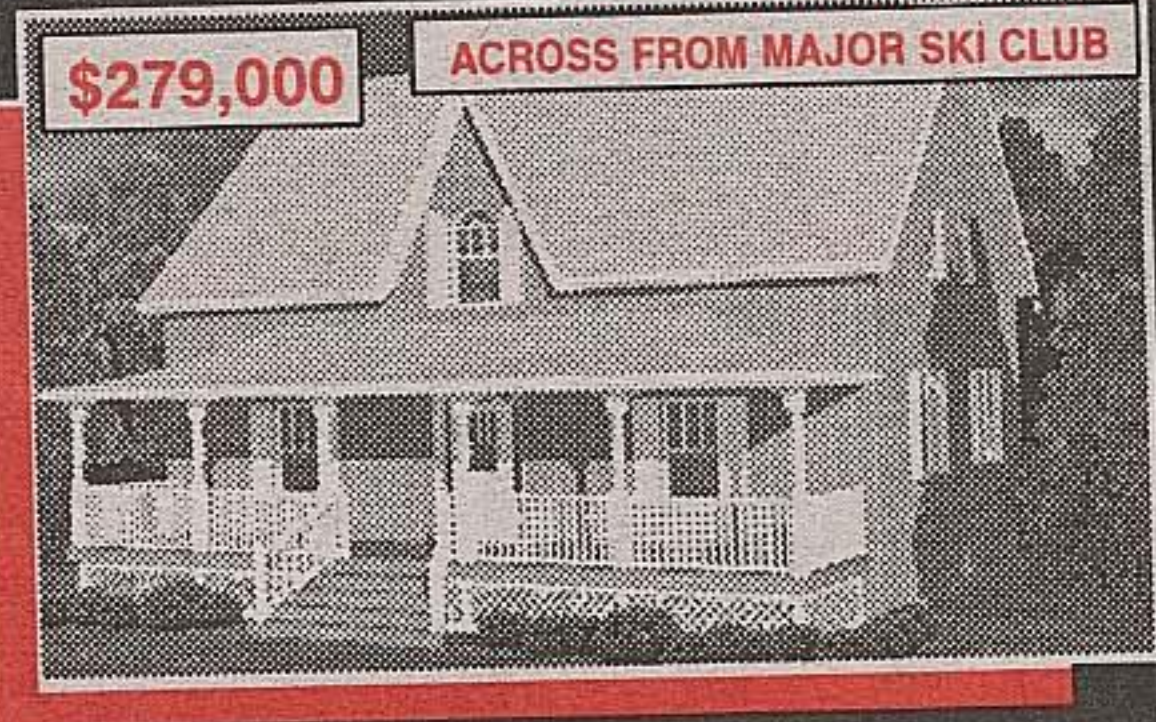


GORGEOUS DOVETAIL LOG HOME, STUDIO & GALLERY
4 bedroom bungalow, immaculate finished basement. Great views. Detached workshop and garage. 6000 sq. ft. commercial building, ideal for antiques, office space, seminars & more on 65 acres of private, scenic rolling land. 1 of a kind - \$389,000. By appointment only . . . call Wayne Baguley* (519) 941-5151 or (905) 450-3355.



\$224,900 **NEW**
3+2 BEDROOM - 3 FULL BATHS
Immaculate bungalow with office, living room & dining room, fireplace, large kitchen with w/o to deck, partly finished rec room with w/o to scenic backyard, beautifully landscaped. Oversized double garage backing onto bush. Call Wayne Baguley* (519) 941-5151 or (905) 450-3355.

INCREDIBLE VIEWS & HILLS
CHARMING LOG OR BOARD & BATTEN
OPTIONAL HERITAGE PACKAGE AVAILABLE & DOUBLE CAR GARAGE
Charming country home, 2 baths, 3 bedrooms, walkout basement, loft overlooking living room. Call Wayne Baguley* (519) 941-5151, (905) 450-3355.



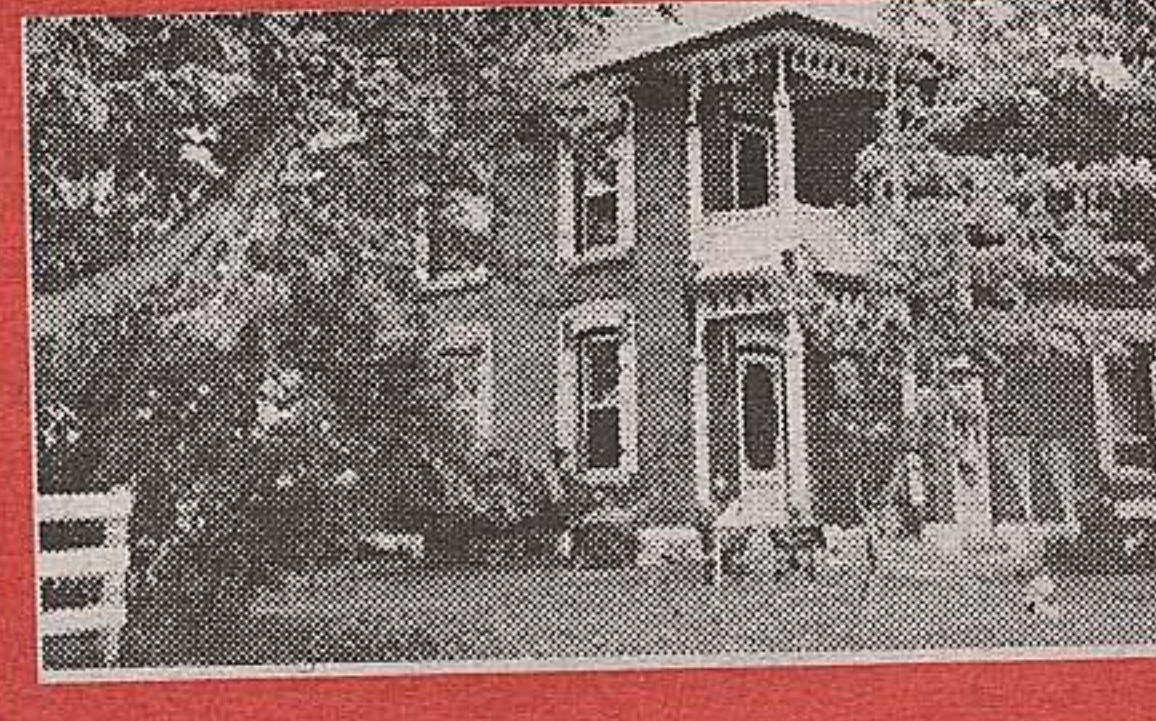
\$279,000 **ACROSS FROM MAJOR SKI CLUB**



IMMACULATE SOLD
SUPER RAISED BUNGALOW \$209,000
1/2 acre lot, which backs onto conservation and nature/hiking trails. Large eat-in kitchen with walkout to deck. Partly finished basement, spacious rec room with woodstove and work shop area. Call Wayne Baguley* (519) 941-5151 or (905) 450-3355.



\$232,500
PERFECT CAPE COD
In quaint hamlet, next door to park. Large deck & swimming pool. Walk out from kitchen, main floor family room and laundry. Full basement. Neutral colors. Only a few years old. Double car garage attached. Over 1/2 acre. \$232,500. Call Wayne Baguley* (519) 941-5151 or (905) 450-3355.



ANTIQUE HOME & PROFESSIONAL HORSE SET-UP \$389,000
10 acre property is fenced with paddocks, immaculate barn with horse stalls. Original century home that is hard to find. Call Wayne Baguley* (519) 941-5151 or (905) 450-3355.

VACANT LAND:
• 1.3 acre building lot. Treed & small stream, backing onto scenic land. \$39,500.
• 97 acres, open spaces, treed, excellent farm and recreational property. \$189,000.
Call Wayne Baguley* (519) 941-5151 or (905) 450-3355.

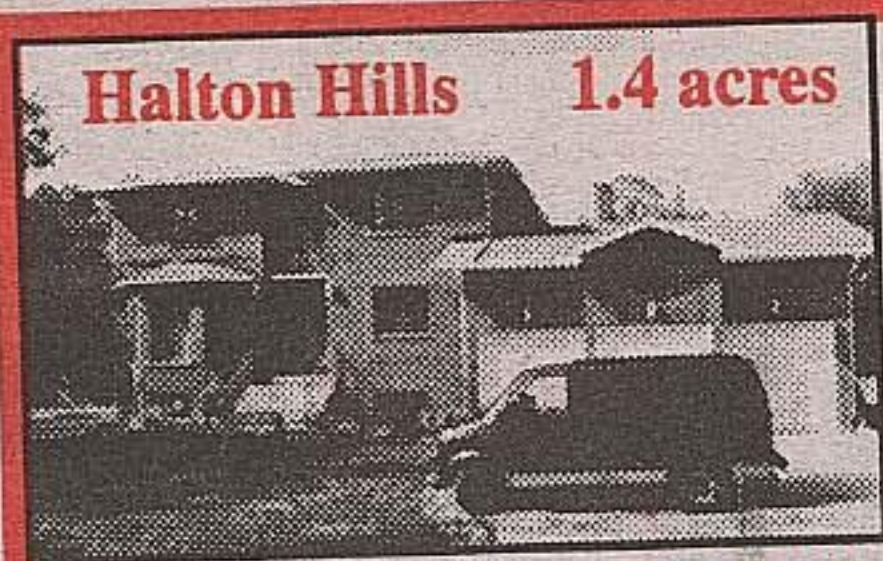
THE MARKET IS MOVING - ARE YOU?



Maureen Plucinsky
Sales Representative
Town & Country Specialist

<http://www.aztec-net.com/~maureen>
maureen@aztec-net.com
Loc.: (905) 877-5211 Tor.: (905) 874-3051
Erin: (519) 833-7117 Fax: (905) 877-5154
1-800-834-5516

RE/MAX
Blue Springs Realty (Halton) Corp.



Halton Hills 1.4 acres



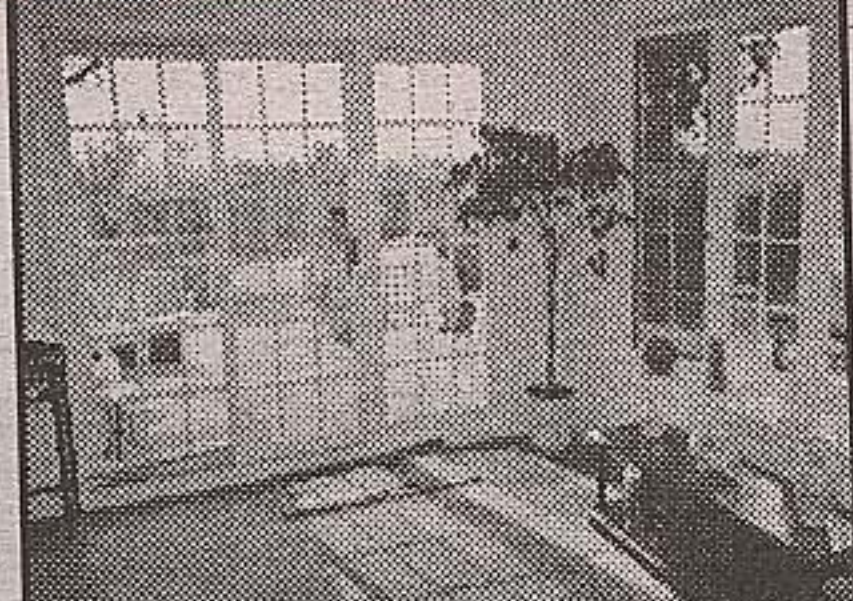
\$359,900 rear view

Quick access to Hwy #25 & #401
~3000SF ~7 min to Milton GO. Four bdrms. 5, 5, 2pc. Hardwood & ceramics. 2 oak staircases. MBR with 5 pc., with sep shower. M fir den & Fam rm + FP. Fin.bsmt. Deck. Excel well. Lit drwvy. Privacy gates. Approx 3 yrs years old.

Note large deck. Large windows make the professionally finished lower level very bright. It has a games rm, exercise area, music area & 2nd family rm. with a woodstove. The home is bricked to the ground. Mature trees. Quality materials & workmanship. Details on my web site.



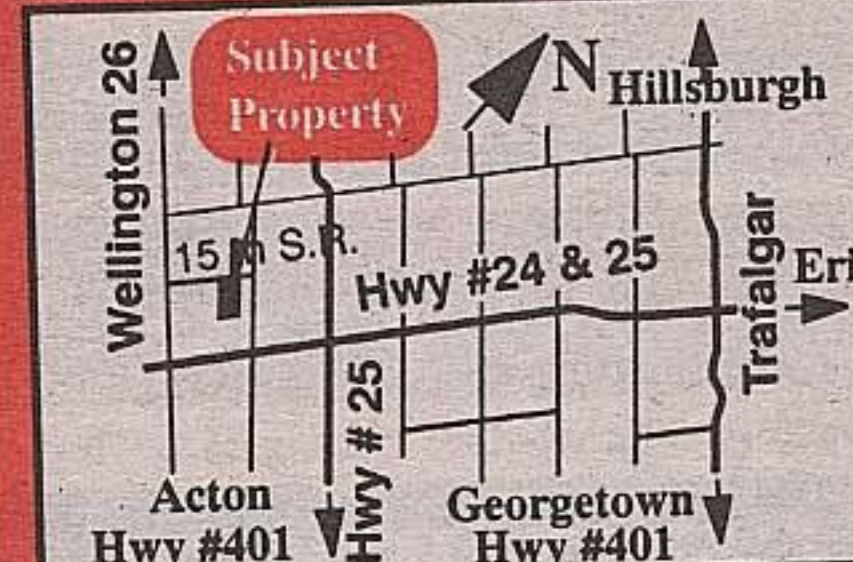
NEW **~6.6 Ac.**
Milton Country Home \$299,900
with a view on 6.6 Acres. Set on top of a hill with panoramic vistas. Pond site, creek & in-ground pool. A very bright home with 3+2 bdrms & 3WRs. Lower level adaptable to in-law suite. ~12 min to Hwy #401 at Guelph Line.



Family room with bay window & sliding glass doors to patio & pool area. There are panoramic views of the surrounding countryside. This is a room from which to watch birds, deer & wonderful sunsets.



Fenced kidney shaped pool on top of a hill with great views in all directions. Enjoy country just minutes from Milton & Guelph. Park your truck on your own land & be on Hwy # 401 in ~12 minutes.



\$90,000 ~33 Acres
Erin. Vacant land. Possible pond site. ~749 ft. frontage x ~2000 ft. Treed & sloping. Under jurisdiction of GRCA. West of the village of Erin. North of Osprunge. Large parcel. 1st Line N of Hwy #24 to 15th SR, W, s/s

Visit my friendly (easy to use) web site to view these listings in detail, inside & outside. In addition, there is an abundance of real estate information on my web sit other than my listings. Allow me to serve you by working on your listing.



Investment Property
Mini tree farm west of & adjacent to new estate subdivision. Frontage: 438' Home plus double garage & workshop. Fenced garden area. Creek. Quick access to Hwy #7 west of Acton at TL, south side, between Crewsons Corner & estate subdivision. ~ 3 acres

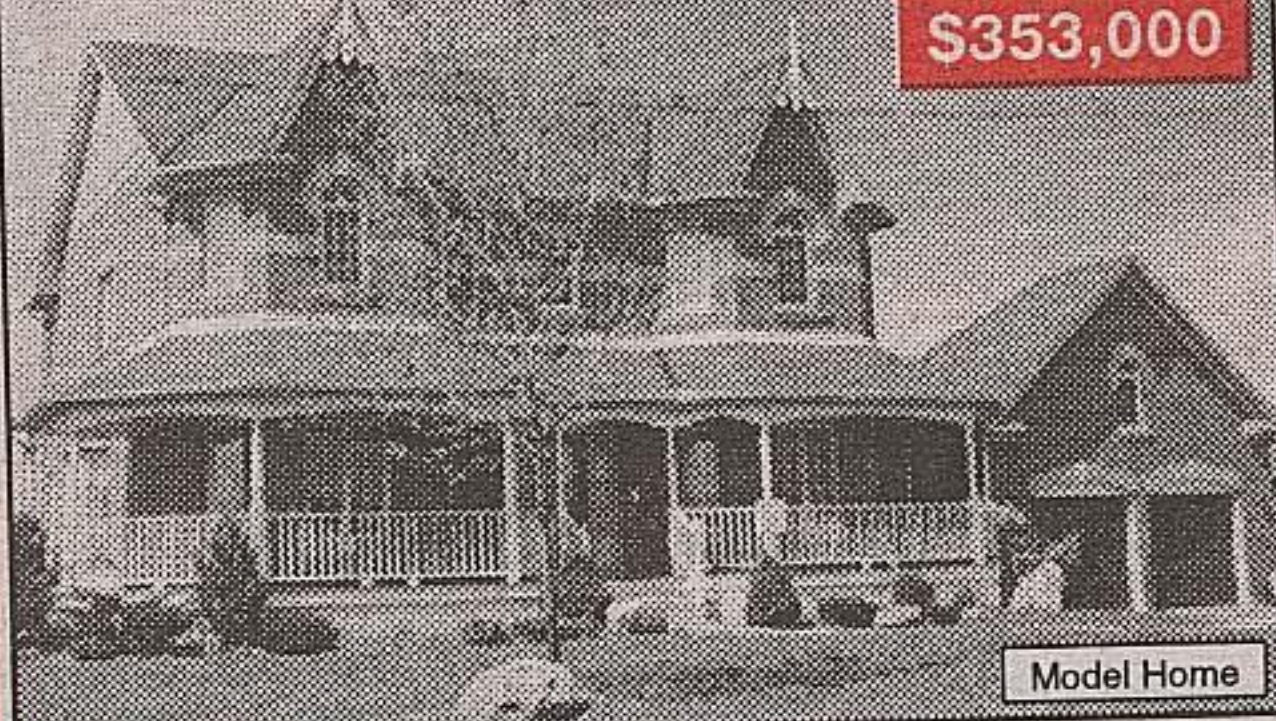
RE/MAX

BLUE SPRINGS REALTY (Halton) Corp.

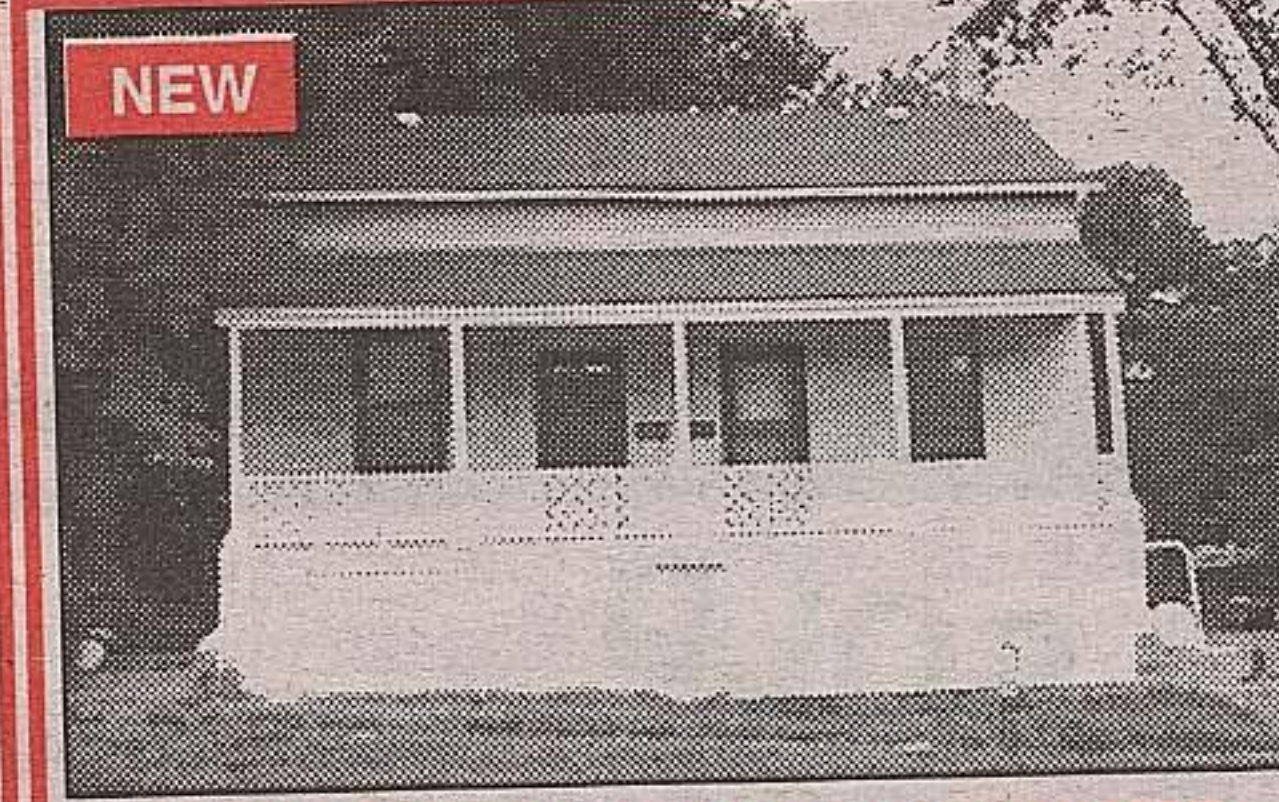
CAROL WOOD*
*Sales Rep.
877-5211



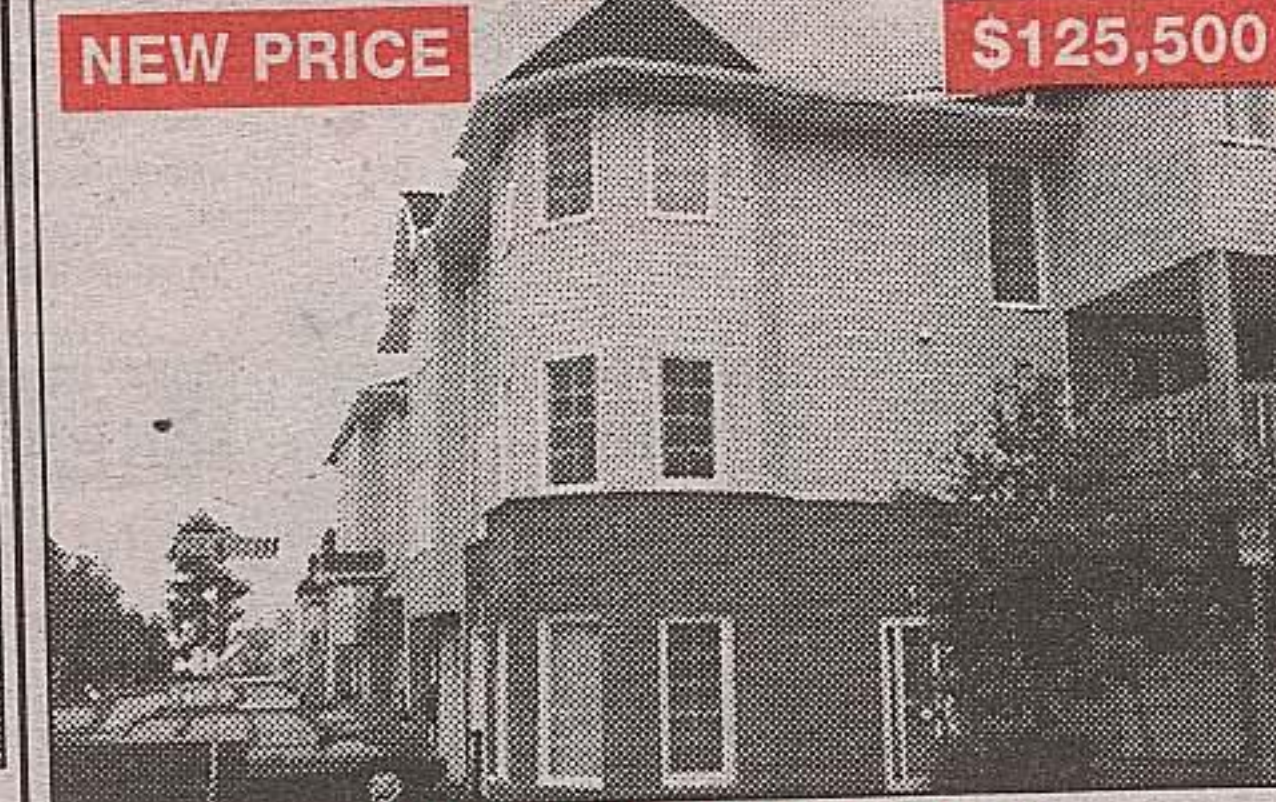
INDUSTRIAL UNITS
1320 & 2880 sq. ft. available in Georgetown. Ground level loading doors. Starting at \$500.00 per month plus T.M.I. These units can also be purchased with little down. Call Carol Wood* for details.



VICTORIAN CHARM
Over 2800 sq. ft. of glorious living in this wonderful 4 bedroom reproduction. 9 ft. ceilings on 1st floor. Oak staircase, walkout to 3/4 acre lot backing on to conservation lands. Builder will finish to your specifications. A home to be truly proud of. Call Carol Wood*.



HOUSE OF TWO FAMILIES
Ideal location for those looking for a home with two separate accommodations. OR live in one side and rent the other. Located in old downtown area, zoned C2 Commercial, Legal Non Conforming Duplex. Asking \$229,900.



PUT THE COFFEE ON
Why rent when this 2 or 3 bedroom townhouse with air conditioning and its own gas fireplace. Could carry for \$819.35 P.I. plus T.M.U. - Possibly cheaper than renting. Park the car in the garage and just move in because this one includes washer, dryer, fridge & stove plus window coverings. Call Doug*.

Real Estate Digest
is an Advertising Product of The Independent & Free Press

211 ARMSTRONG AVE., GEORGETOWN, ONT. L7G 4X5

Ken Nugent - Publisher

Steve Foreman
Advertising Manager

Sharon Pinkney



DOUG MEAL*
*Sales Rep.
877-5211

RE/MAX

BLUE SPRINGS REALTY (Halton) Corp.