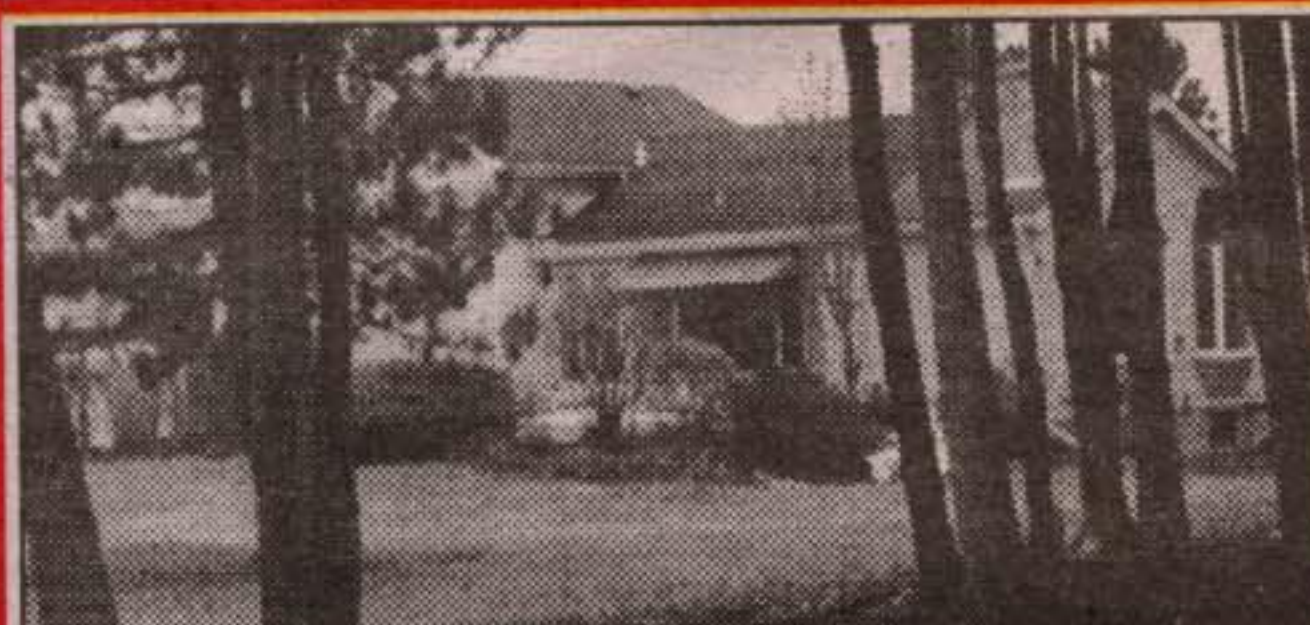


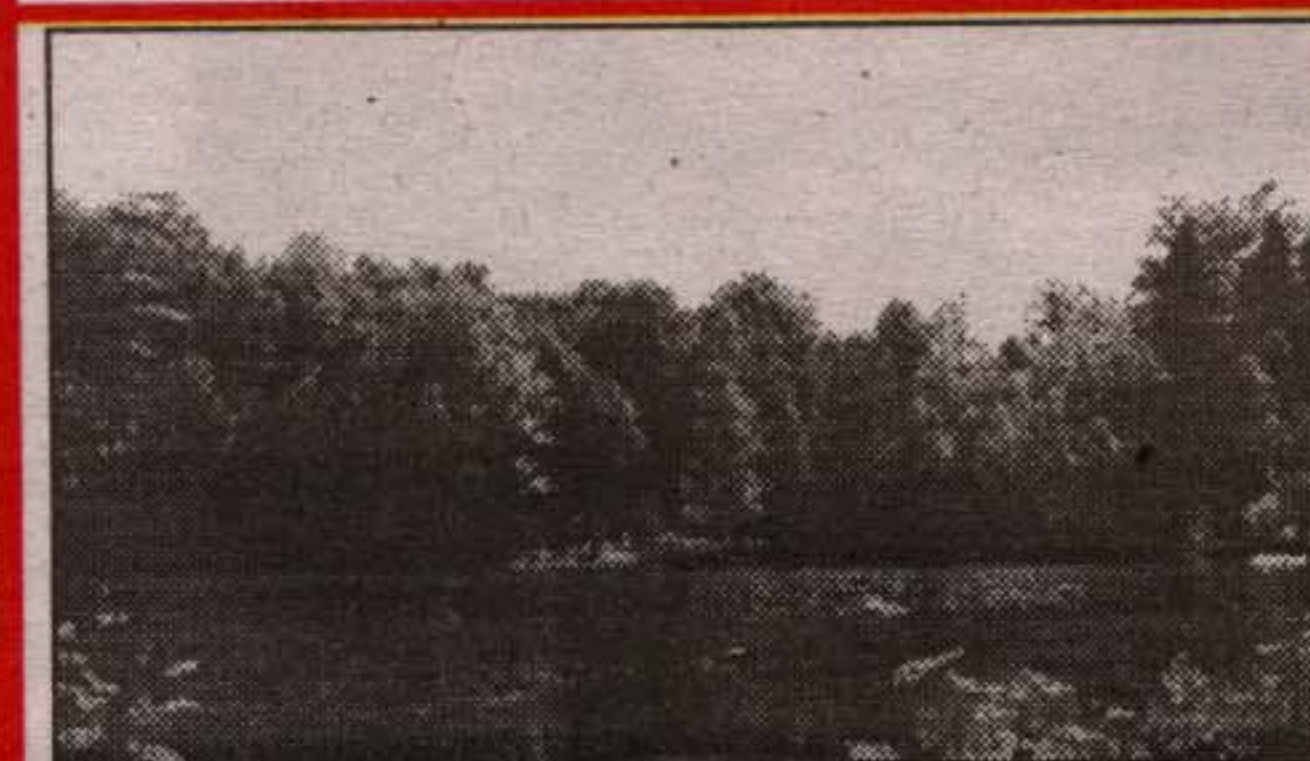
LOOKING TO BUILD

Great 1 acre lot just north of Glen Williams close to the Bruce Trail. The shop has been built and is ready to store your materials, the well is in, the hydro and driveway are in so start drawing your plans now. Not many left with a location like this. \$169,000. **Martha Summers***. TYR-99



LARGE WORKSHOPS ON GREAT COUNTRY PROPERTY

Need space to repair your vehicles then look no further!! 40' x 80' building with 3 separate 12 ft. doors and drive thru access. Separate bay heated, insulated w/water and of course hydro, plus a sep. area for storage of your house trailer. 2nd out-building set up as a loafing barn for horses with adjacent paddocks. Cooks and entertainers will love the house which is open concept with the kitchen overlooking the large living/dining area and the adjoining 4 season sunroom with built-in barbecue and views of the hardwood bush and rolling countryside. Great sunsets from this property. \$449,000. **Martha Summers***. LAQ-99



CONTEMPORARY COUNTRY

Superb and private 21 acre property with custom open concept home situated to take advantage of the views of the large spring fed pond and hardwood forest. Designed with your every wish in mind. Perfect for home office use with finished lower level. Ideally set up for the car enthusiast with three separate garages. Something special at \$799,000. Adjacent 2 acre lot available at \$85,000. **Martha Summers***.

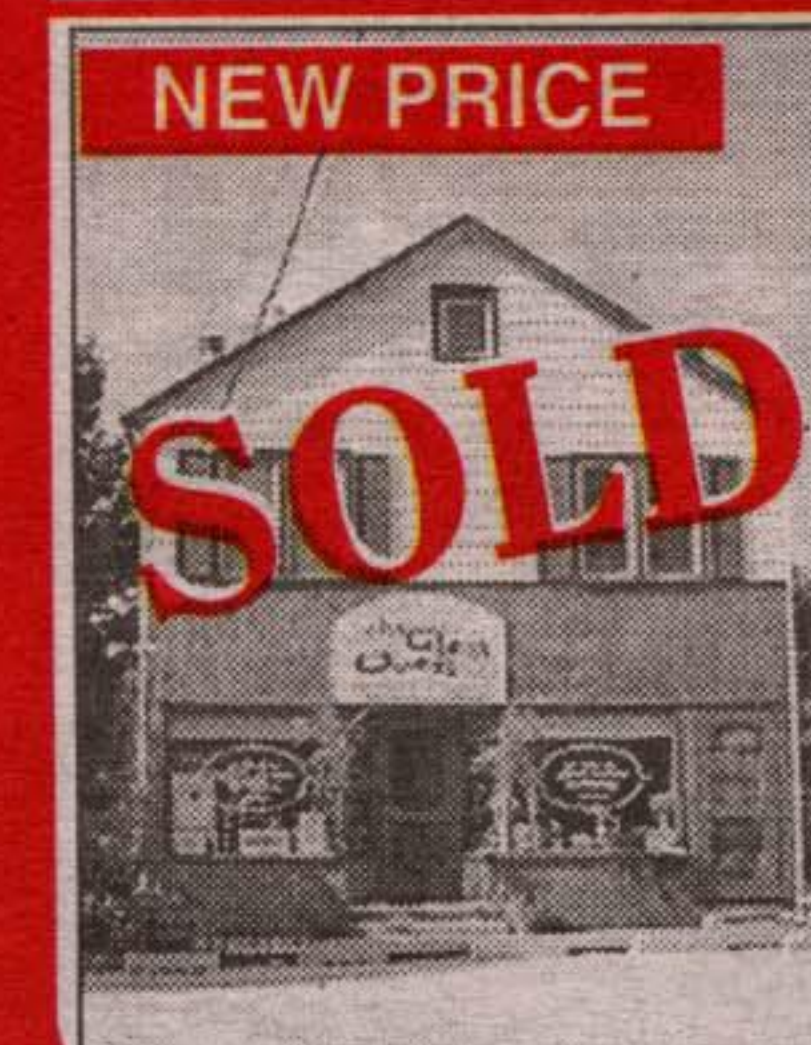


SIMPLY CHARMING

4 bedroom, open concept Victorian reproduction in desirable estate subdivision on extra large lot overlooking trees and countryside. Walking distance to Village. Hardwood floors, 2 gas fireplaces, french doors. Walk out to deck overlooking private yard. \$310,500.00. **Martha Summers***. DIC-99



A JEWEL IN THE WOODS



SOLD - SOLD - SOLD
The Glen Oven Bakery welcomes Doug and Patty Getty as the New Owners effective May 17, 1999. Business will continue as usual!!! Laura and Tim would like to thank everyone for their support and wish Doug and Patty the Best of Luck!

MARTHA SUMMERS*

Sales Rep.

877-5165

874-3040 (Tor.)
(519) 833-9714 (Erin)

247 Guelph St.,
Georgetown



*President's Circle
Award Winner*

*Performance Group
Member*

1993 1994 1995
1996 1997 1998



Johnson Associates
HALTON LTD., REALTOR



"MARTHA SUMMERS= PROVEN PERFORMANCE"

The 1999 market has been very strong - I have not seen activity like this since I started selling real estate in 1988. My listings have been selling very quickly, often over list price and with more than one offer. If you are considering a change, now may be the time, so please do not hesitate to call, for a free, no obligation, market evaluation. My experience and knowledge is significant in Erin, Halton and Caledon.



SPRING IN THE COUNTRY

Watch the spring flowers, see the horses frolicking or watch and catch the wildlife in the pond. Go for a walk in the woods, enjoy the early morning sun on your deck and relax in the hot tub in the evening. If the air is cool light a fire and cozy up with a good book. Entertain your family and friends casually in the rec room with it's own wet bar, or formally in the large living room/dining room combination with lots of windows overlooking the countryside. This is life in the country, available at \$314,900. **Martha Summers***. STE-99



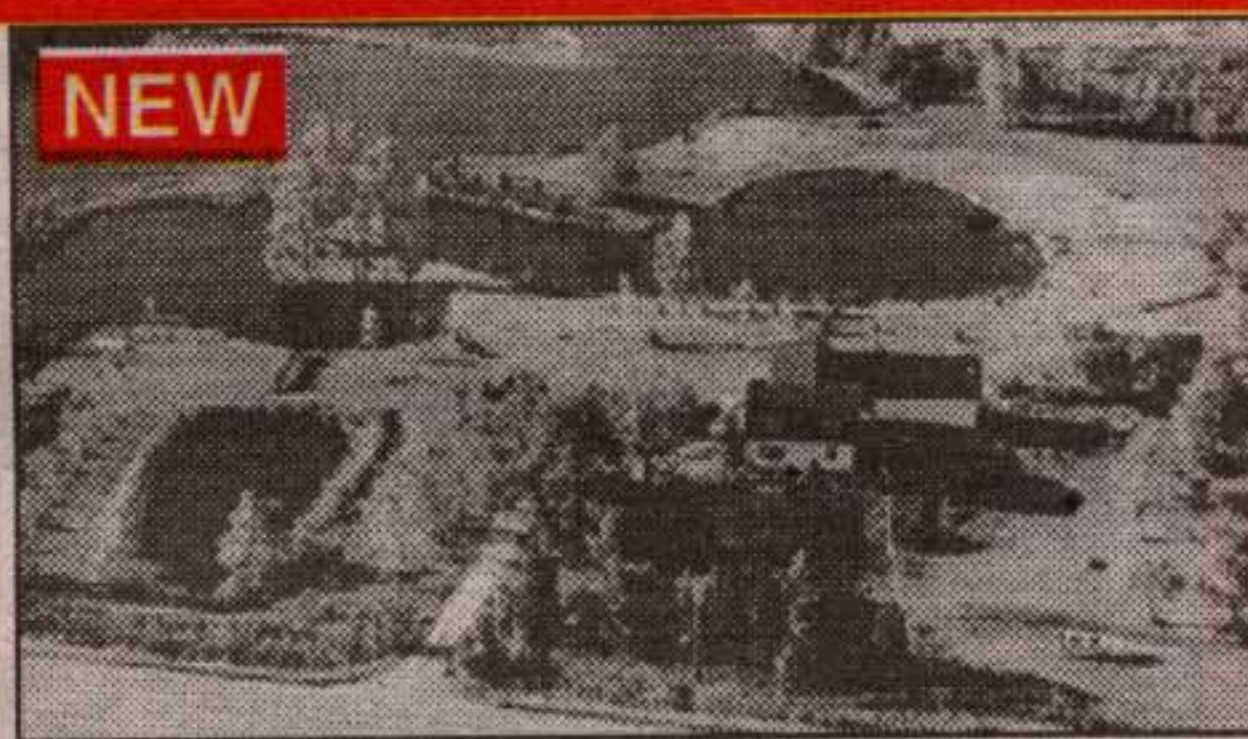
SUPERB AT \$519,000!!

Listed and sold for more than asking in less than 6 hours . . . and I still have a purchaser looking for something just like this! If you are thinking of selling please call **Martha Summers***.



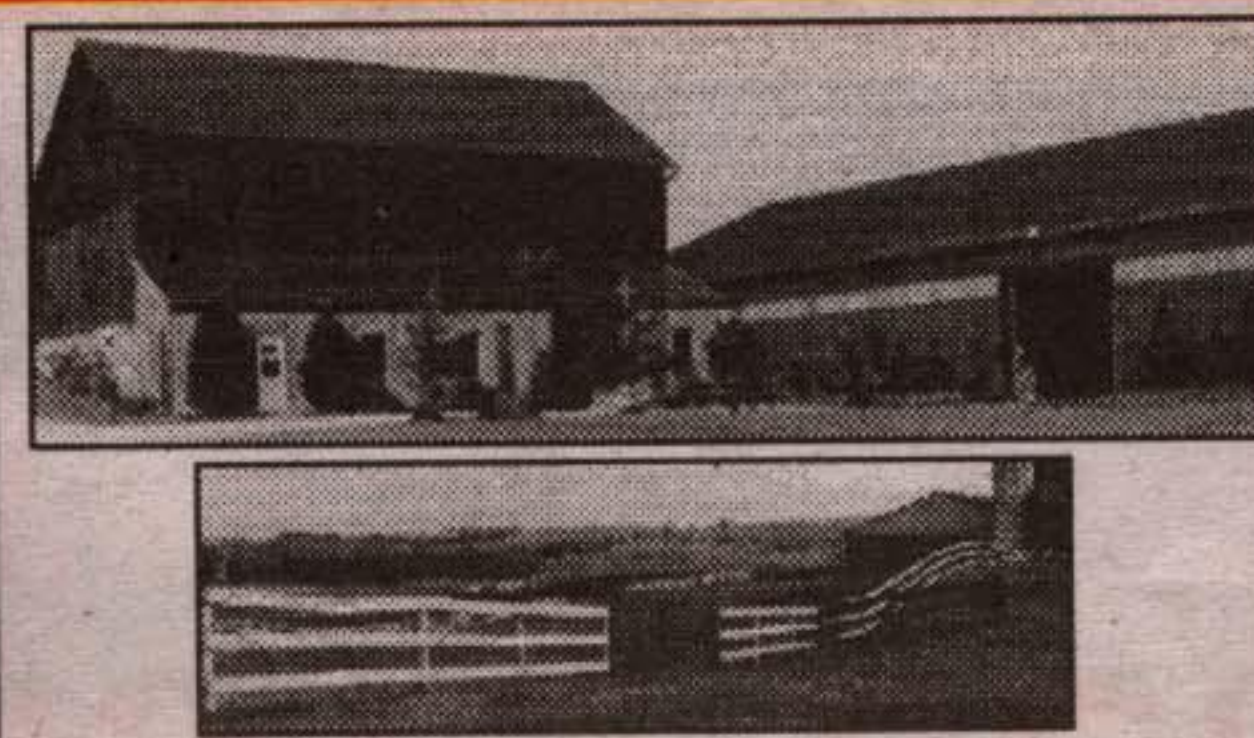
LOOK AT THIS BACK YARD \$249,900

Throw that football, you won't hit anyone else. Stone and brick one owner home with upgraded eat-in kitchen and bathroom, huge finished recreation room and large living room with stone fireplace. Access to the basement from the one car garage is a real bonus, and all this is on a 1/2 acre on a court location. These bungalows are few and far between. **Martha Summers***. FEN-99



WATERFRONT IN ERIN!!

30 private acres with approx. 3 1/2 acres of your own ponds. Swim from the raft, fish, canoe and even jet ski on your private water. Sunfilled 3 bedroom with huge country kitchen with walkout overlooking water, main floor family room with vaulted beamed ceilings, fireplace and pine floors. Hardwood floors, ceramics, bay windows are only a few of the features. \$425,000. **Martha Summers***.



"IN YOUR DREAMS"

You thought of owning your own 98 acre horse farm complete with a 60' x 150' indoor arena, 12 stall barn, sand ring, cross country course and an almost century 4 bedroom home set on sandy soil with long views. Wake up!! This is it at \$499,000. **Martha Summers***.



ENJOY NATURE IN BELFOUNTAIN \$264,900



NEED A WORKSHOP AND A GARAGE??



7 ACRES ROLLING ERIN COUNTRYSIDE \$294,900



BELFOUNTAIN COUNTRYSIDE

WANTED:

- Executive Country Estates on Hwy 10 up to \$550,000
- Small acreages in Erin, Halton and Caledon



1. 95 rolling acres, trees, meadow stream - \$299,000.
2. 50 treed acres - \$215,000.
3. 32 acres - views, pond potential - \$199,000. - SOLD
4. 2 acres - bush - \$70,000. - SOLD
5. 46 acres - bush, building envelope designated, driveway culvert is in - \$139,000.
6. 38 acres - bush, stream rises on the property - \$119,000.
7. 37 open acres - stream - \$219,000.
8. Near conservation & stream - 2 acres - \$59,000.

"MARTHA SUMMERS = PROVEN PERFORMANCE"