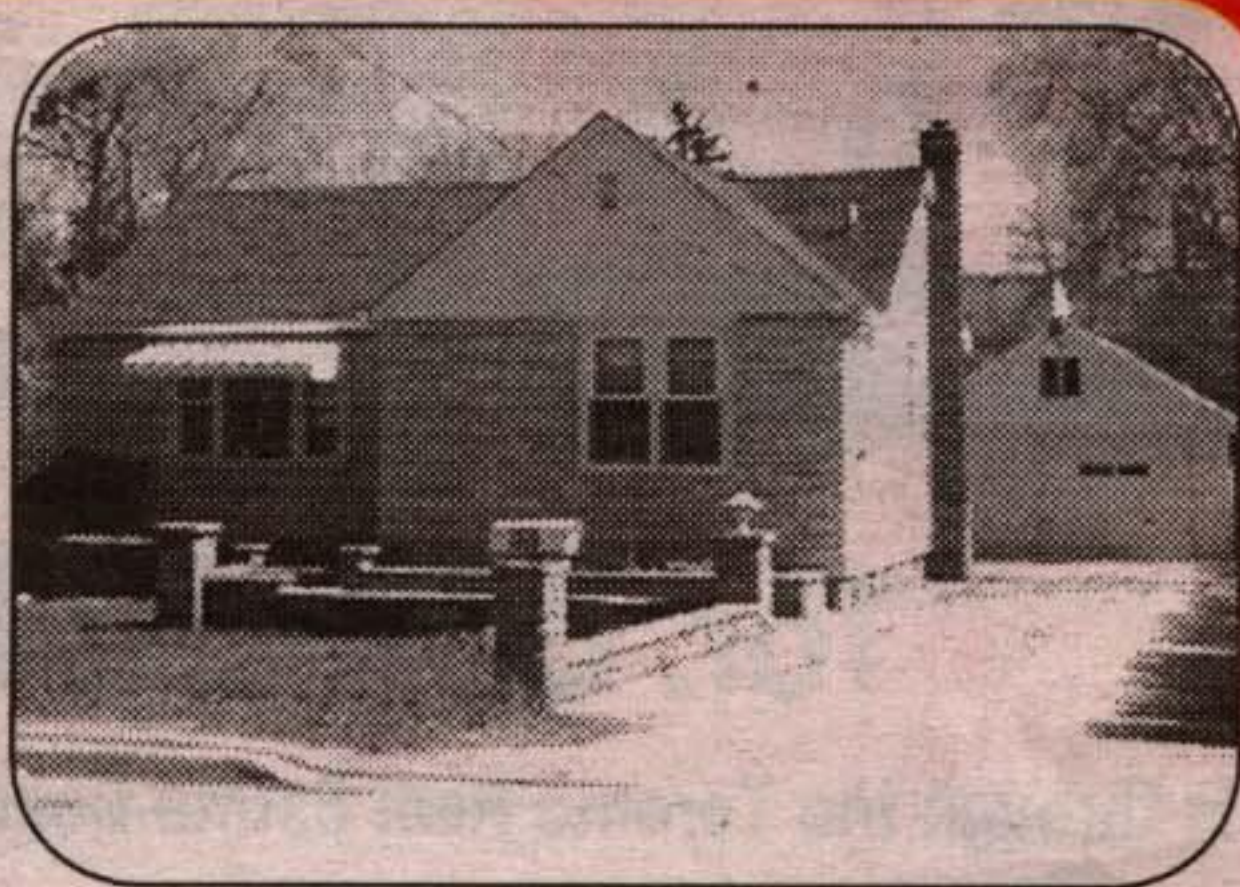




BEAUTIFUL BACKSPLIT

Huge eat-in kitchen, four bedrooms, fabulous family room with stone fireplace and walkout to 60 x 180 foot lot. \$159,900. Only in Fergus.



GLEN WILLIAMS

Charming starter with RIVER view. Property is private and backs onto land backing onto river. Detached garage. \$179,900.



FOUR BEDROOM HOME

Upgraded with new windows, furnace, central air, bathroom and roof. Main floor family room with marble and wood fireplace. Walkouts to large private yard and swimming POOL! Shows real nice. \$228,900. Please call **Kathy***.

RM067-99



NO PRIVATE YARD

Great 2 storey with super patio, wood fence and railings. Four bedrooms, main floor family room with fireplace. The basement is finished with bar and gas fireplace. Pretty home at \$231,900. RM110-99

Thinking of moving? Call KATHY* and start packing!



Member of ReMax President's Club & ReMax Executive Club



Kathy Monckton* Sales Rep.
(905) 877-5211 Tor. (905) 874-3051
Re/Max
Blue Springs Realty (Halton) Corp.

RE/MAX Blue Springs Realty (Halton) Corp.

877-5211 877-5211 877-5211 877-5211

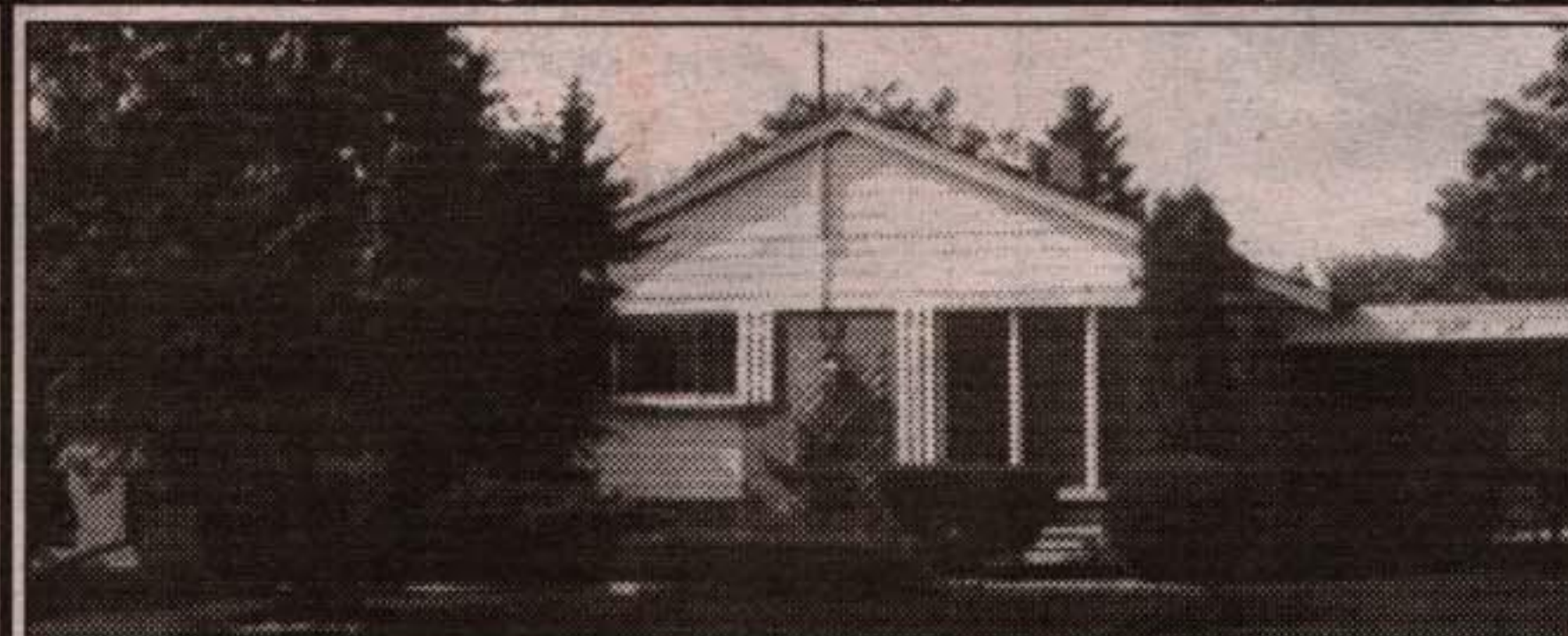


DOUG MEAL*

*Sales Rep

877-5211

RE/MAX
Blue Springs
Realty (Halton) Corp.



GREAT OPPORTUNITY - \$187,900

GEORGETOWN - 3 bedroom sidesplit, lovely bright kitchen with bay window and sliding glass doors to sun room on back of home. Call me now!



GROW YOUR OWN

Annual, perennial or vegetable gardens, children or both!! This 3 bedroom home is sitting pretty on a huge lot (89' x 137'). Completely renovated - this home has a long list of upgrades. Kitchen is gorgeous - combined with family room with gas fireplace. There are 2 walkouts to the deck overlooking the private backyard. Newer windows, doors, drywall, insulation, roof, wiring...the list is long!! You can move in for \$169,900 and not do a thing!! RM043-99

DOUG MEAL*, Sales Rep.

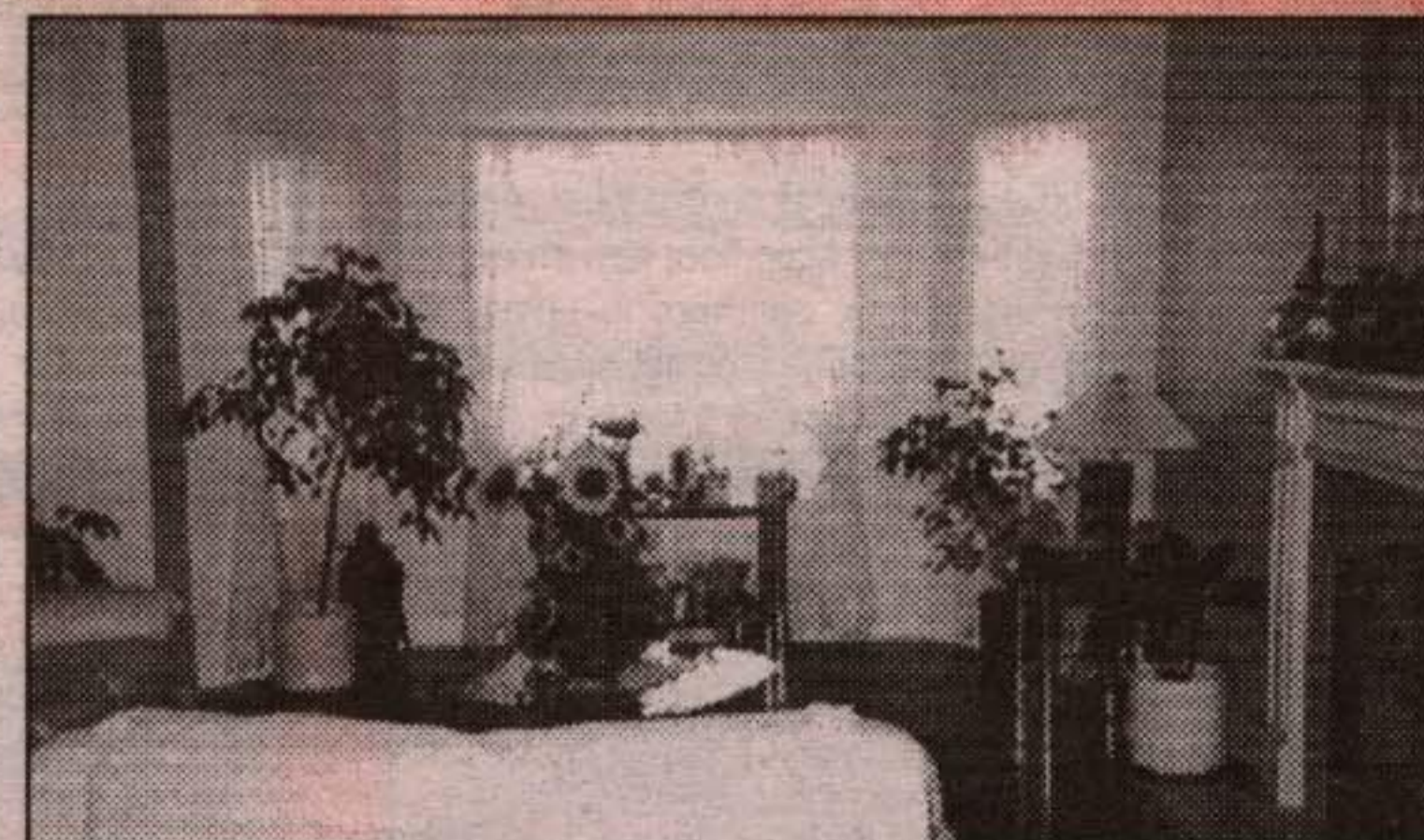
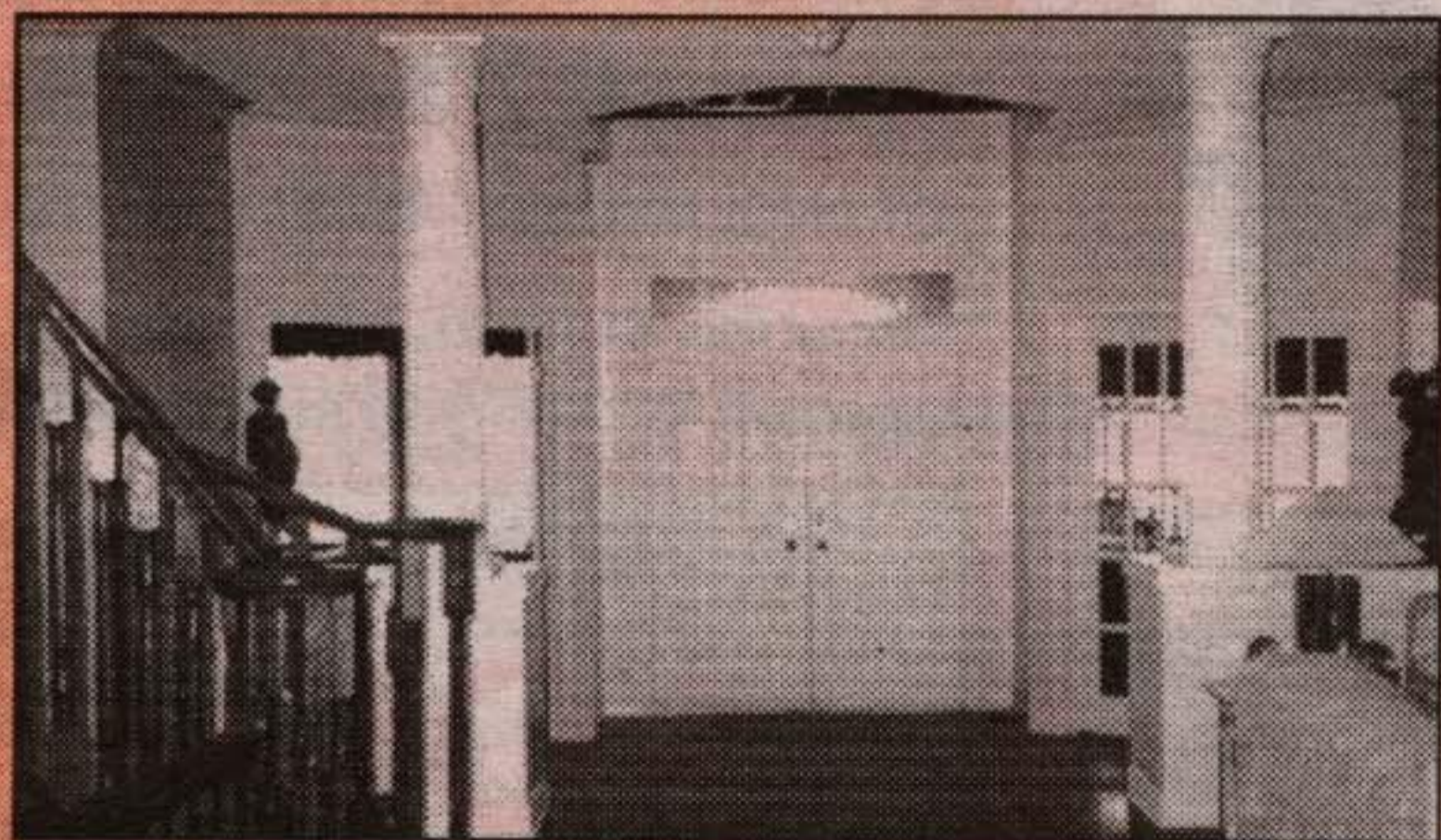
PROPERTY BULLETIN

Spring Open House

SUNDAY, MAY 16th - 2-4 P.M.
2 TURTLE LAKE, ACTON

OVERLOOKING THE 7th HOLE

In Exclusive Turtle Lake. This magnificent custom home is beautifully designed featuring over 4000 sq. feet, 5 bedrooms with ensuite baths, office, billiard room, porcelain and hardwood floors, walkout basement and more. Call **Elizabeth Doell** for your appointment to view this stunning home today.



ELIZABETH DOELL*

877-5165



Johnson Associates
HALTON LTD., REALTOR

*Sales Rep.