



DUTCH NURSERIES AND GARDEN CENTRE

Huttonville, Ontario

905-457-4410

WE INVITE YOU TO WANDER OUR BLOCK OF LARGE TREES.

MAPLES

- Cleveland
- Columnare
- Deborah
- Emerald Queen
- Harlequin
- Globe
- Norway
- Royal Red
- Rubrum
- Schwedler
- Sugar
- Superform

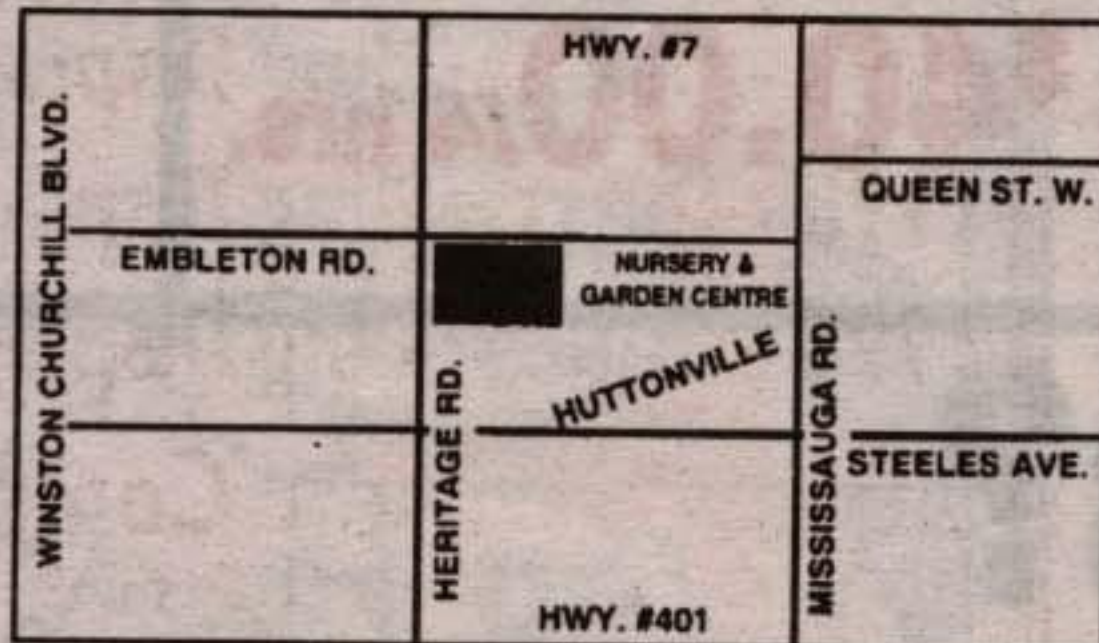
1999 CROP INCLUDES:

- Ivory Silk Lilac
- Clump Birch
- Linden
- Locust
- Mountain Ash
- Green Ash
- Pyramid Oak
- Junipers
- Weeping Caragana
- Weeping Cypress
- Tiers
- Colokado Spruce
- Austrian Pine

AND OUR PRIDE - HOOPSII SPRUCE

ALSO - AN EXTENSIVE VARIETY OF SMALLER SIZE TREES,
SHRUBS, EVERGREENS, ETC.

**DELIVERY - INSTALLATION
OR COMPLETE PLANTING
SERVICES AVAILABLE.**



DUTCH NURSERIES: Supplying area gardeners, landscapers and garden centres for 29 years. If you don't know us, you should!

Sheridan Nurseries can help you improve your home's curb appeal

Are you selling your home? Then enhance curb appeal for a quicker sale.

Compare two identical houses in the same neighborhood, and the one with the best landscaping will sell first. In a competitive market, landscaping gives home sellers an edge. The main reason Realtors don't show a house is lack of curb appeal. Take a so-so house, add nice landscaping, and it's going to get shown more frequently and sell faster. If selling a home is in your plans, consider the following suggestions.

Hire a professional if you plan to sell within a year. Lawns that receive professional attention three to five times a year will look sharp when the house enters the market. Landscaping should be attractive, not complicated. Home buyers react favorably to a park-like setting. Your goal is a beautiful yard that looks easy to care for. Most buyers are not landscape experts, but they do look for quality.

Fast fixes come in handy when selling in a hurry. You've been transferred—you move next month and

you've got enough on your mind without worrying about curb appeal.

A trip to Sheridan Nurseries Farm Outlet and a few hours labor may translate into a quicker sale.

Dress up beds and around trees with a fresh layer of mulch. Place several containers of colorful annuals at the house entrance for a favorable first impression. Green up your lawn with Parkwood 21-6-12 Lawn Food or overseed with Parkwood Supreme Turf Seed. Trim back shrubbery for a neat appearance. Any landscape gets a lift from mowing, weeding and edging.



Curb appeal is a powerful selling tool. The friendly staff at Sheridan Nurseries Farm Outlet can suggest additional ways to take advantage of that power.

Please recycle this newspaper

Your Key To Colour

Exclusive Colour Testers

What could inspire more confidence than actually trying the paint colour on the wall? That's the idea behind our unique tinteable testers, offered exclusively through Fuller-O'Brien Premium dealers. Available ready-mixed or in tint bases for 1200+ Colour Key selections.



Express Yourself with Confidence

While it's nice to know your decorating ideas look good in your head, wouldn't it be even better to know that they'll look great in and on your home? That's why we have created Fuller-O'Brien® Premium—our finest quality Interior and Exterior finishes. Paint so good it's warranted for as long as you own your home.

\$10.00*
MAIL-IN
REBATE
OFFER

LIMITED
TIME
ONLY



Rebate of \$10 for every one gallon purchased of Fuller O'Brien paint.

* See store for complete details.



**Buy 4
Pay for 3**

Buy 4 cans (3.78L) Weather Supreme Paint and Pay for 3

**FREE
STAIN BRUSH**

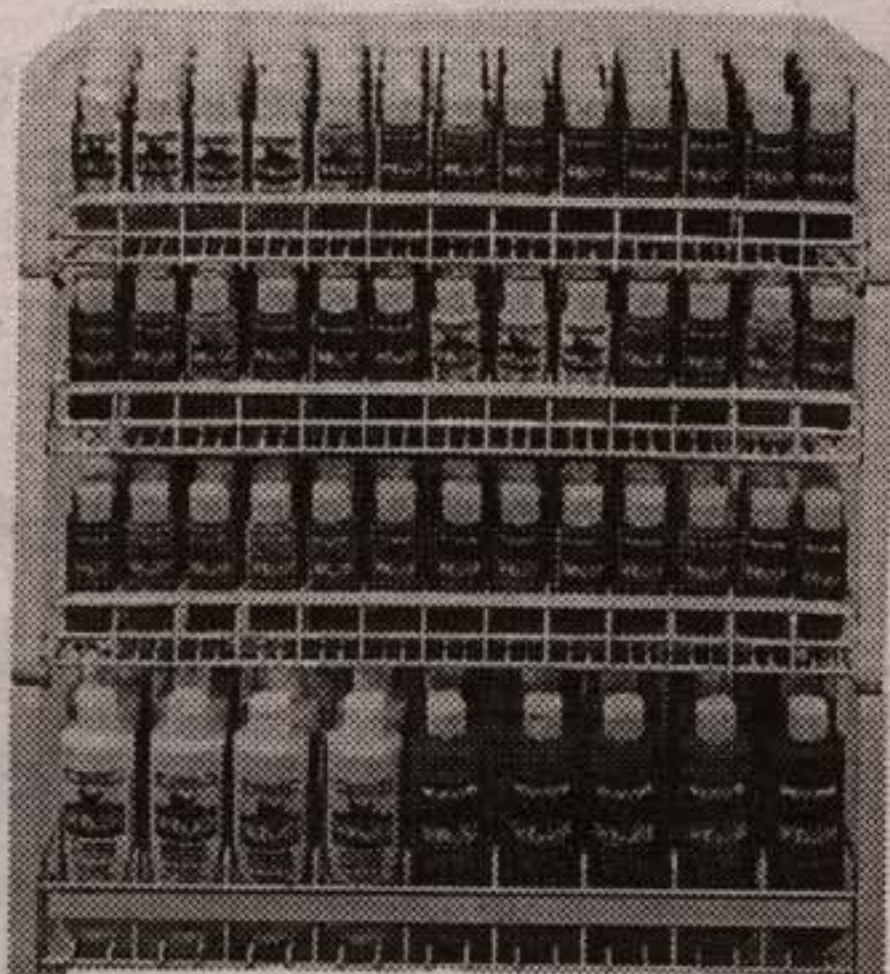
when you purchase 2 or more
Exterior Stain 3.78L

Georgetown
Store Only

**\$6.89
VALUE
(\$5.49 + tax)**

Not all items may be available at all stores. Dealers may sell for less.

#99-105



*Not exactly as shown

WE STOCK:

- Stencils
- Blocking Patterns
- Acrylic Craft Paints
- Spray Paints

For all your decorating or hobby needs!

Don't forget
our Tuesday
Special!

We're in Your Hometown & Ready to Help!

St Clair
the paint and paper people

211 Guelph St
Georgetown

873-0288

Mon. to Fri. 9 am - 9 pm / Saturday 9 am - 6 pm / Sunday 11 am - 4 pm