



LOOKING TO BUILD

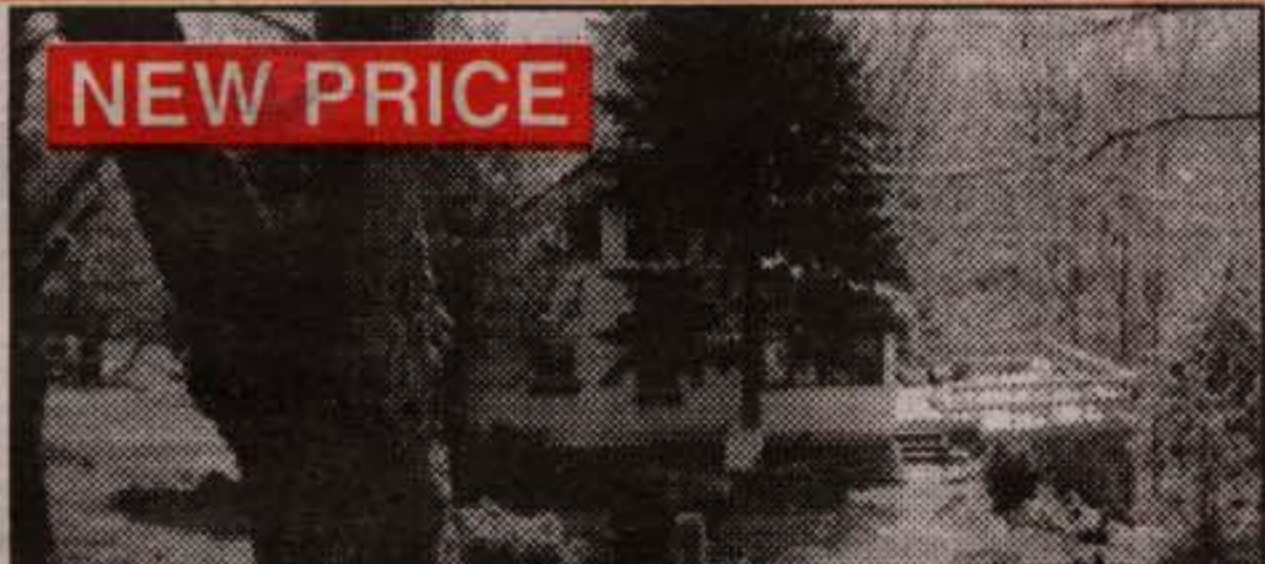
Great 1 acre lot just north of Glen Williams close to the Bruce Trail. The shop has been built and is ready to store your materials, the well is in, the hydro and driveway are in so start drawing your plans now. Not many left with a location like this. \$169,000. **Martha Summers*** TYR-99



NEW
Going...
7 ACRES ROLLING ERIN COUNTRYSIDE \$294,900
Large family needed to enjoy this 5 bedroom home featuring hardwood floors, 2 fireplaces, separate living room and dining room, main floor family room plus a four season sunroom to take advantage of the evening sunsets. Two car attached garage plus a separate 20' x 40' insulated and heated workshop with well finished and designed office above. The home is well set back for country privacy with a paved driveway. **Martha Summers***



NEW PRICE
BELFOUNTAIN COUNTRYSIDE
Very pretty 90 acres with mixed bush, fabulous views and open meadow suitable for horses. Contemporary home with lots of windows and walkouts overlooking the valley. Two car attached garage and great possibilities. River frontage with a Fork of the Credit flowing through. Something special at \$499,000. **Martha Summers***



NEW PRICE
A JEWEL IN THE WOODS
Great weekend retreat property to escape the pressures of the world. Listen to the birds, walk the nearby conservation lands, enjoy the perennial gardens and sit on the deck and relax. Lots of windows, lots of wood, open concept with a brick fireplace. Close to riding, skiing, golfing and Belfountain. \$249,000. **Martha Summers*** FEL-99



NEW PRICE
OWN A PIECE OF HISTORY IN GLEN WILLIAMS \$249,000
Charming building in quaint Glen Williams currently operating as a bakery and cafe (also for sale at \$30,000). Approx. 1000 sq. ft. of living space with 3 bedrooms, living rm, eat-in kit and two balconies, one with access to the rear yard. Main level also approx. 1000 sq. ft. with pine flrs, lots of light and multiple uses under C-1 zoning. Great tourist location and a super place to raise your family. **Martha Summers*** 98-508-30



NEW
SOLD FOR 98%
ERIN EXECUTIVE
Simply Charming

NEW
SOUTH IS WHERE YOU WANT TO BE!! \$224,900

MARTHA SUMMERS*

Sales Rep.

877-5165

874-3040 (Tor.)
(519) 833-9714 (Erin)

247 Guelph St.,
Georgetown



*President's Circle
Award Winner*

*Performance Group
Member*

1993 1994 1995
1996 1997 1998



Johnson Associates
HALTON LTD., REALTOR



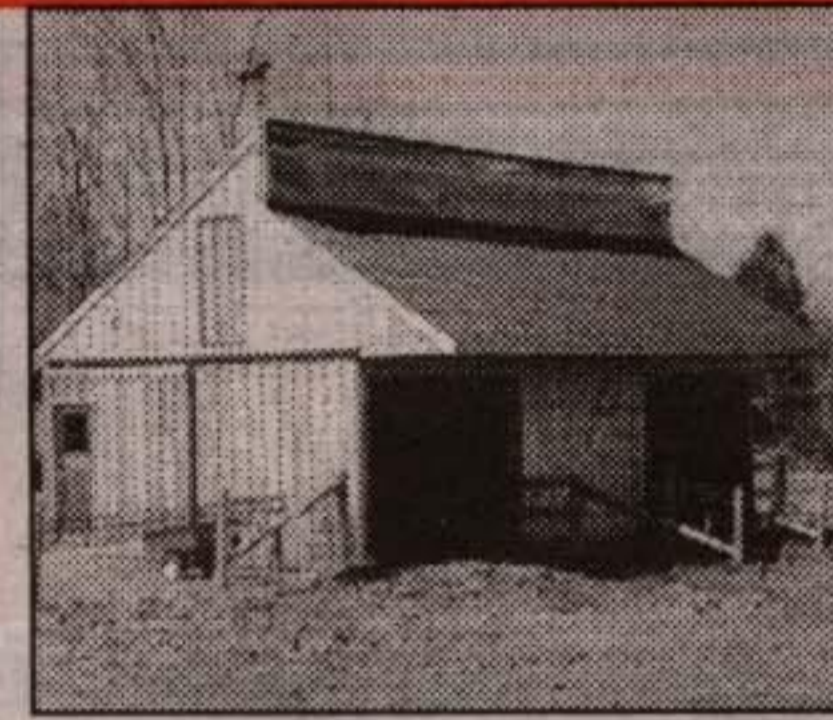
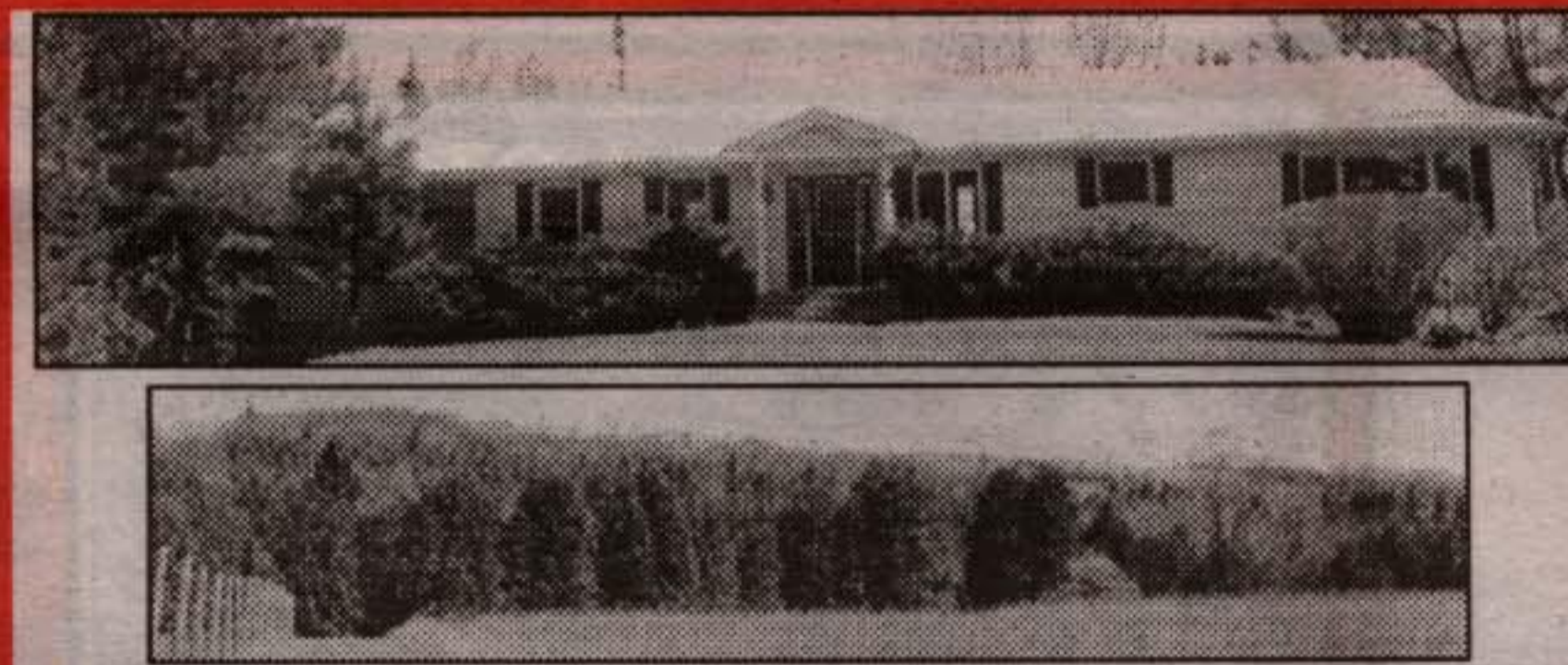
"MARTHA SUMMERS = PROVEN PERFORMANCE"

The 1999 market has been very strong - I have not seen activity like this since I started selling real estate in 1988. My listings have been selling very quickly, often over list price and with more than one offer. If you are considering a change, now may be the time, so please do not hesitate to call, for a free, no obligation, market evaluation. My experience and knowledge is significant in Erin, Halton and Caledon.
Martha Summers = Proven Performance



LARGE WORKSHOPS ON GREAT COUNTRY PROPERTY

Need space to repair your vehicles then look no further!! 40' x 80' building with 3 separate 12 ft. doors and drive thru access. Separate bay heated, insulated w/water and of course hydro, plus a sep. area for storage of your house trailer. 2nd outbuilding set up as a loafing barn for horses with adjacent paddocks. Cooks and entertainers will love the house which is open concept with the kitchen overlooking the large living/dining area and the adjoining 4 season sunroom with built-in barbecue and views of the hardwood bush and rolling countryside. Great sunsets from this property. \$449,000. **Martha Summers*** LAQ-99

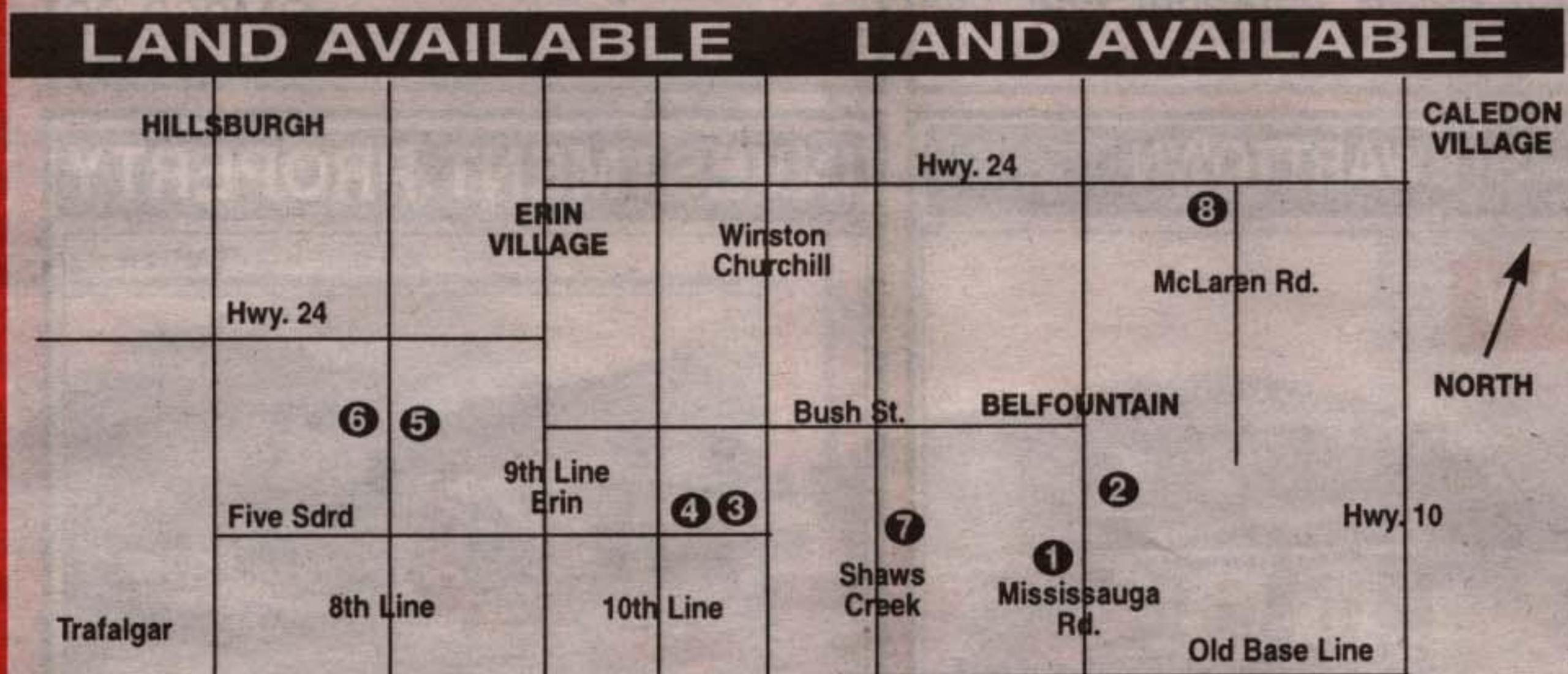


SPRING IN THE COUNTRY

Listen to the "Peepers", watch the spring flowers, see the horses frolicking or watch and catch the wildlife in the pond. Go for a walk in the woods, enjoy the early morning sun on your deck and relax in the hot tub in the evening. If the air is cool light a fire and cozy up with a good book. Entertain your family and friends casually in the rec room with it's own wet bar, or formally in the large living room/dining room combination with lots of windows overlooking the countryside. This is life in the country, available at \$314,900. **Martha Summers*** STE-99

WANTED:

- Executive home in Georgetown/Glen Williams up to \$500,000
- Executive Country East of Hwy. 10 up to \$550,000
- Small acreages in Erin, Halton and Caledon



1. 95 rolling acres, trees, meadow stream - \$299,000.
2. 50 treed acres - \$215,000.
3. 32 acres - views, pond potential - \$199,000. - SOLD
4. 2 acres - bush - \$70,000. - SOLD
5. 46 acres - bush, build envelope designated, driveway culvert is in - \$139,000.
6. 38 acres - bush, stream rises on the property - \$119,000.
7. 37 open acres - stream - \$219,000.
8. Near conservation & stream - 2 acres - \$59,000.



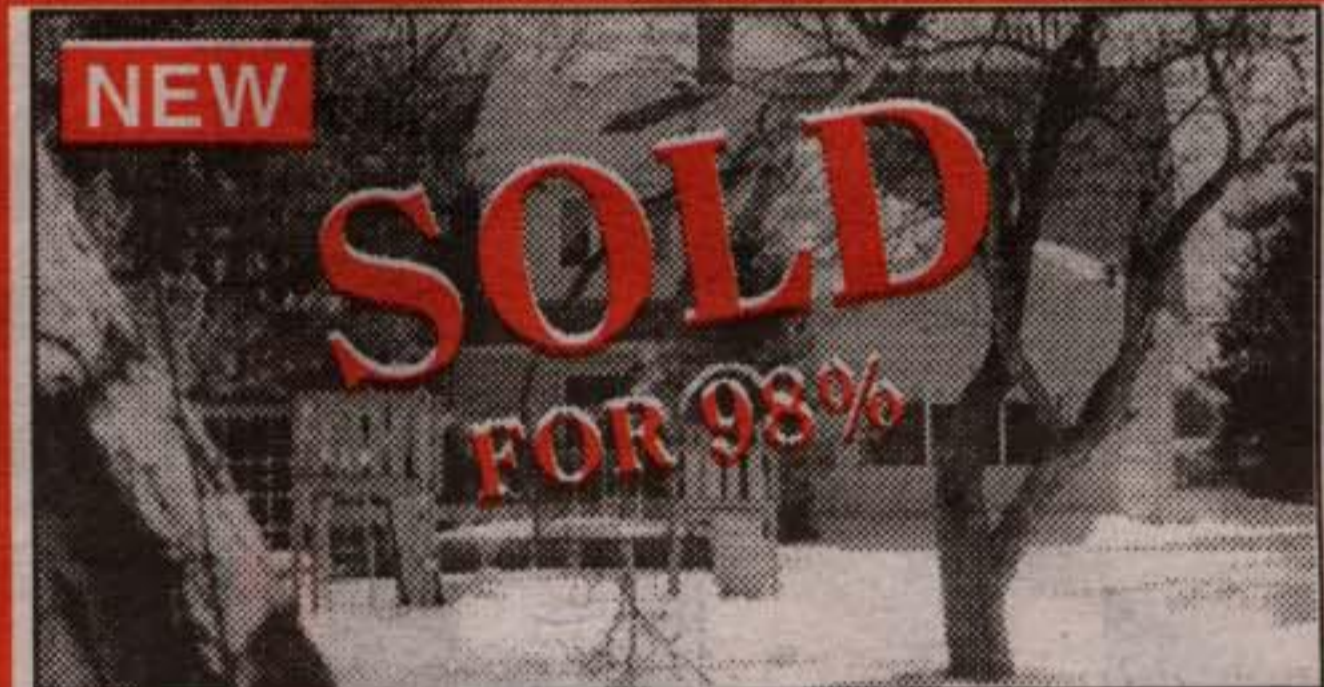
NEW
CONTEMPORARY COUNTRY
Superb and private 21 acre property with custom open concept home situated to take advantage of the views of the large spring fed pond and hardwood forest. Designed with your every wish in mind. Perfect for home office use with finished lower level. Ideally set up for the car enthusiast with three separate garages. Something special at \$799,000. Adjacent 2 acre lot available at \$85,000. **Martha Summers***



NEW
SOLD OVER ASKING
SUPERB AT \$519,000!!
Listed and sold for more than asking in less than 6 hours . . . and I still have a purchaser looking for something just like this! If you are thinking of selling please call Martha Summers*.



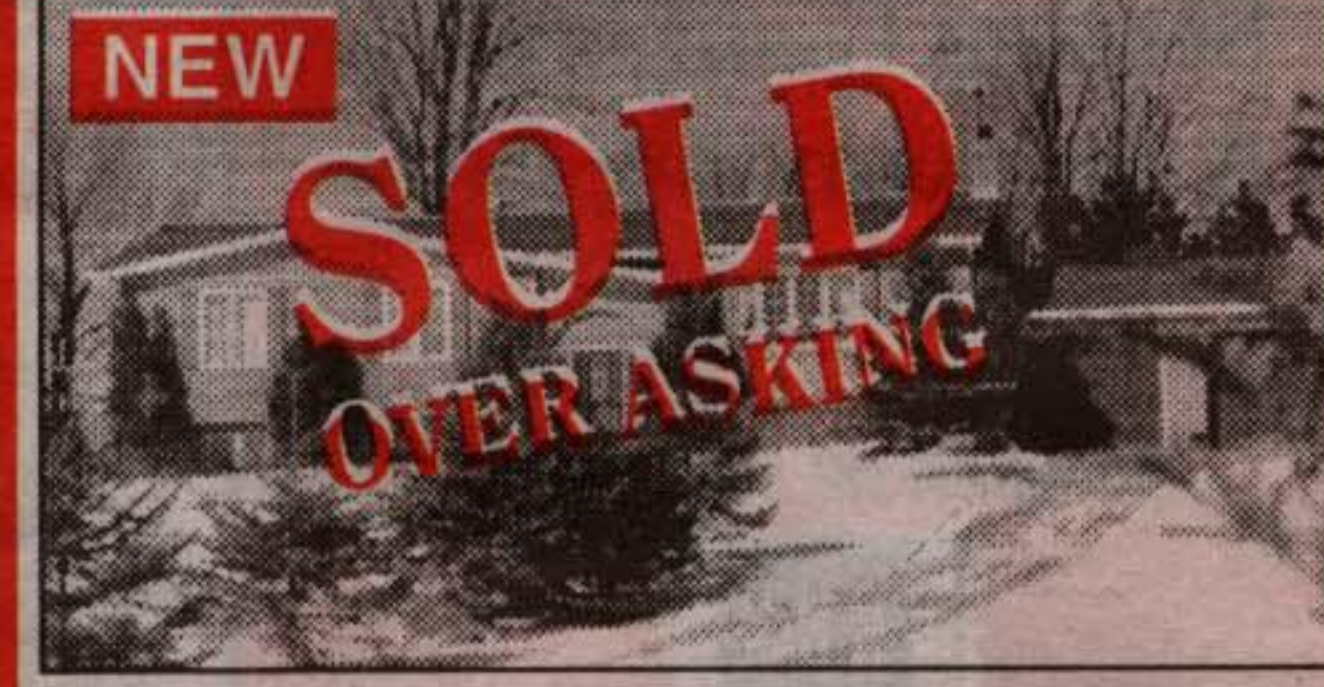
LOOK AT THIS BACK YARD \$254,900
Throw that football, you won't hit anyone else. Stone and brick one owner home with upgraded eat-in kitchen and bathroom, huge finished recreation room and large living room with stone fireplace. Access to the basement from the one car garage is a real bonus, and all this is on a 1/2 acre on a court location. These bungalows are few and far between. **Martha Summers*** FEN-99



ENJOY NATURE IN BELFOUNTAIN \$264,900



NEED A WORKSHOP AND A GARAGE??



WATCH THE SUNSETS - 3.9 ACRES OF ERIN VIEWS



NEW
SOLD FOR 99%
LOOK AT THIS LOT - BALLINAFAD \$249,000