



ELECTRONIC SERVICE
AT A PRICE THAT WON'T JOLT YOU!

- VCRs •HOME & CAR STEREOs
- PORTABLES •CDs •VIDEO GAMES
- COMPUTER MONITORS •ETC.

120 DAY GUARANTEE •FREE ESTIMATES
ALL SERVICE PERFORMED ON PREMISES BY QUALIFIED TECHNICIANS

For the Best Service At the Best Price Call
GEORGETOWN CUSTOM CAR SOUND
55 Sinclair Ave., Georgetown
Serving Halton Hills & Area Since 1978
877-2425

HOURS
Tues. - Fri.
9:00 - 6:00
Saturday
9:00 - 5:00

No solution yet for GDHS traffic problem

Halton Hills budget committee made no recommendation or included any monies in the 1999 capital budget to deal with the traffic congestion in front of Georgetown High School. At a February council meeting, a delegation from the high school

cited traffic congestion and safety hazards in front of the school created by the smokers, poor visibility and heavy traffic. The delegation requested the town consider reworking the driveway configuration and add traffic lights.

The matter was referred to town

engineer Bob Austin for an investigation and recommendation during 1999 capital budget meetings.

In a report at Thursday's meeting, Austin made no recommendation because no solution to the problem has been found yet.

Austin has met last month with Halton District School Board personnel and options discussed included updating the design of Guelph St. in front of the school which was done in preparation for its future reconstruction. However, reconstruction is not expected until 2001. Austin also said the school board is considering severing a piece of the up-for-sale Wrigglesworth School (currently St. Francis School) property to provide a driveway access onto Maple Ave.

A traffic signal warrant count was done earlier this month, and after a study is compiled another meeting will be held to discuss options.

Mayor Marilyn Serjeantson said, "I hope to see something in the near future that will address this situation."

For People Who Demand Dependability



1999 CAVALIER COUPE

- 2.2 litre L4 115 hp engine • 5-speed manual transmission
- 4-wheel anti-lock braking system • Next Generation dual front air bags
- PASSLock® theft-deterrent system • rear spoiler • AM/FM stereo
- tinted glass • rear seat heat ducts • body side, body colour mouldings

Puts You In Complete Control with Up-Front, Full Disclosure Pricing With No Aftershook.



1999 CAVALIER COUPE
NO SURPRISE LEASE GUIDE

MONTHLY PAYMENT (36 mo/60,000 km)	\$178 (plus tax)
CASH DOWN (Incl. Freight of \$645)	\$2,050
GAS TAX	\$75
PRE-DELIVERY INSPECTION	NO EXTRA CHARGE
PST/GST (Incl. Tax on Payment)	\$345
SECURITY DEPOSIT	\$300
TOTAL AMOUNT DUE ON DELIVERY	\$2,948

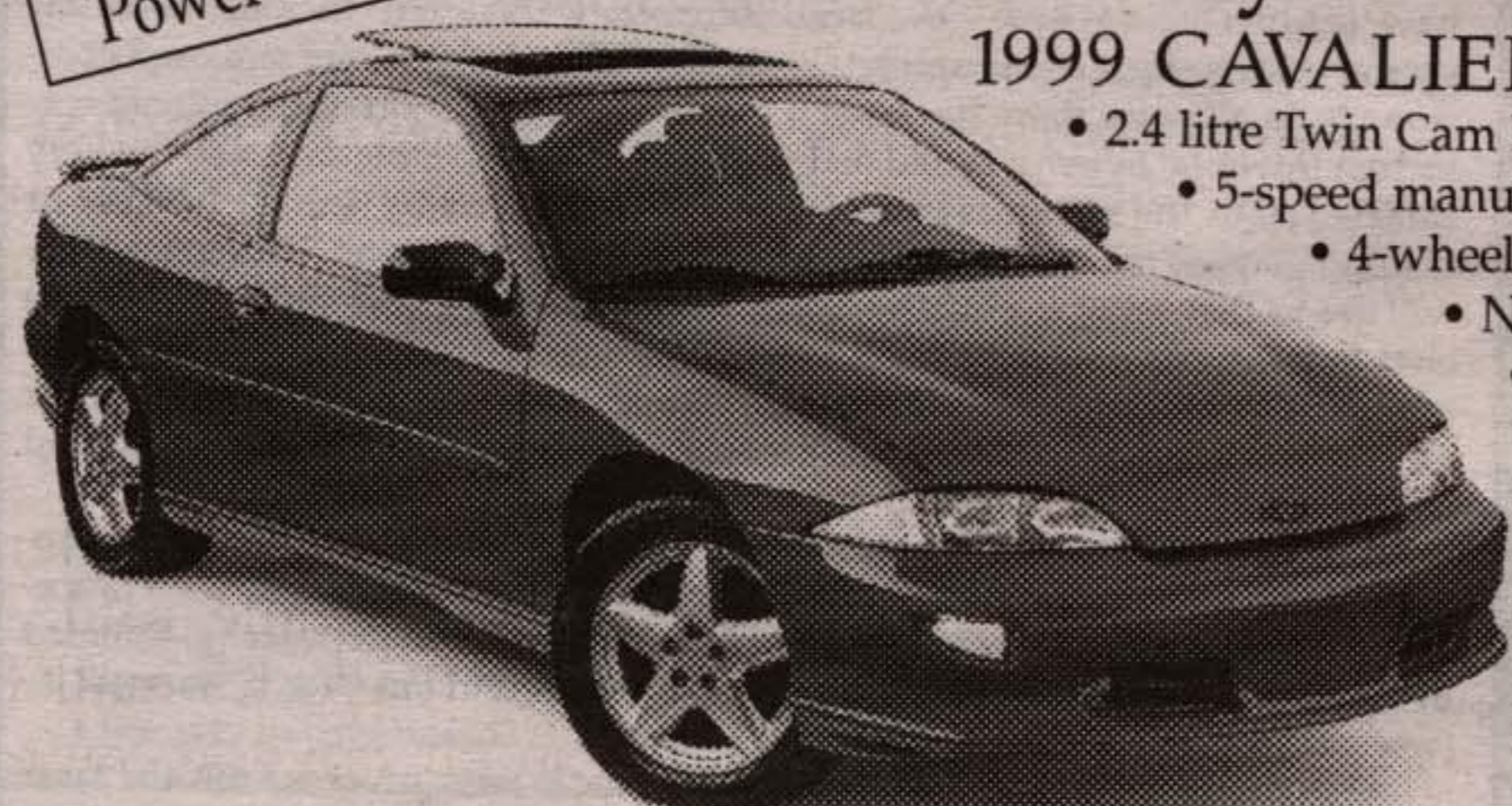
Licence, P.P.S.A. & Admin. Fees Extra
With \$0 down, monthly payment is \$237 (plus tax) - \$659 due on delivery.

Includes Power Sun Roof

And For Only \$50 More A Month

1999 CAVALIER Z24

- 2.4 litre Twin Cam L4 SF1 150 hp engine
- 5-speed manual transmission
- 4-wheel anti-lock braking system
- Next Generation dual front air bags
- PASSLock® theft-deterrent system
- AM/FM stereo with CD player
- rear spoiler • air conditioning
- power sunroof
- tilt/cruise
- 16" aluminum wheels
- fog lamps
- body side, body colour mouldings



SMARTLEASE \$178 WITH 1.9% LEASE RATE UP TO 36 MONTHS OR PURCHASE FINANCING UP TO 48 MONTHS OR PURCHASE \$15,795 (INCLUDES FREIGHT OF \$645, LICENCE, INSURANCE AND TAXES EXTRA.)

1999 CAVALIER Z24
NO SURPRISE LEASE GUIDE

MONTHLY PAYMENT (36 mo/60,000 km)	\$228 (plus tax)
CASH DOWN (Incl. Freight of \$645 and Air Tax of \$100)	\$2,090
GAS TAX	\$75
PRE-DELIVERY INSPECTION	NO EXTRA CHARGE
PST/GST (Incl. Tax on Payment)	\$359
SECURITY DEPOSIT	\$300
TOTAL AMOUNT DUE ON DELIVERY	\$3,052

Licence, P.P.S.A. & Admin. Fees Extra
With \$0 down, monthly payment is \$288 (plus tax) - \$767 due on delivery.

1999 CAVALIER SEDAN

- 2.2 litre L4 115 hp engine • 4-wheel anti-lock braking system
- Next Generation dual front air bags • PASSLock® theft-deterrent system • AM/FM stereo
- child-security rear door locks • rear seat heat ducts • body colour mouldings • mud guards • battery run-down protection • Value Package - includes power door locks, cruise control, air conditioning and automatic transmission.



PURCHASE \$17,995 (Includes Freight of \$645 and Air Tax of \$100, Licence, insurance and taxes extra.)
1.9% LEASE RATE UP TO 36 MONTHS OR PURCHASE FINANCING UP TO 48 MONTHS
SMARTLEASE \$208 36 MONTHS

1999 CAVALIER SEDAN
NO SURPRISE LEASE GUIDE

MONTHLY PAYMENT (36 mo/60,000 km)	\$208 (plus tax)
CASH DOWN (Incl. Freight of \$645 and Air Tax of \$100)	\$2,120
GAS TAX	\$75
PRE-DELIVERY INSPECTION	NO EXTRA CHARGE
PST/GST (Incl. Tax on Payment)	\$360
SECURITY DEPOSIT	\$300
TOTAL AMOUNT DUE ON DELIVERY	\$3,063

Licence, P.P.S.A. & Admin. Fees Extra
With \$0 down, monthly payment is \$269 (plus tax) - \$721 due on delivery.

1999 CHEVROLET MALIBU

- 2.4 litre Twin Cam 150 hp engine • 4-speed automatic transmission • 4-wheel anti-lock braking system
- Next Generation dual front air bags
- PASSLock® theft-deterrent system
- air conditioning • child-security rear door locks • AM/FM stereo with cassette • Tilt-Wheel™ steering • body side, body colour mouldings • power trunk release




PURCHASE \$19,995 (Includes Freight of \$720 and Air Tax of \$100, Licence, insurance and taxes extra.)
4.9% PURCHASE FINANCING UP TO 48 MONTHS
SMARTLEASE \$228 36 MONTHS

1999 CHEVROLET MALIBU
NO SURPRISE LEASE GUIDE

MONTHLY PAYMENT (36 mo/60,000 km)	\$228 (plus tax)
CASH DOWN (Incl. Freight of \$720 and Air Tax of \$100)	\$2,410
GAS TAX	\$75
PRE-DELIVERY INSPECTION	NO EXTRA CHARGE
PST/GST (Incl. Tax on Payment)	\$407
SECURITY DEPOSIT	\$300
TOTAL AMOUNT DUE ON DELIVERY	\$3,420

Licence, P.P.S.A. & Admin. Fees Extra
With \$0 down, monthly payment is \$301 (plus tax) - \$782 due on delivery.



Guess Who's 22!
Happy Birthday Karen



Nancy Baker & Duke Webster are thrilled to announce the engagement of their son Josh to Nicole Bell daughter of Susan & Basil of Milton. Wedding to take place on October 9, 1999 at the Old Mill, Toronto

This Volunteer Week
we send a very special **THANK YOU** to all **OUR VOLUNTEERS**

Community Resource Services
3365 Harvester Road,
Burlington, Ontario L7N 3N2
(905) 632-6531 Fax: (905) 632-6560



Tried Tested & True
Chevrolet Dealers
OF ONTARIO

GM
www.gmcanada.com

We'd like you to know more: Come visit us at your local dealer, on our website at www.gmcanada.com or call us at 1-800-GM-DRIVE. All leases have annual kilometre limit of 20,000 km, \$0.12 per excess kilometre. PST, GST and insurance extra. All leases have an annual cost of borrowing of 1.9%/5.4% per annum for Cavalier/Malibu. Other lease options available. Financing on approved GMAC credit only. Example: \$10,000 at 1.9%/4.9% APR, the monthly payment is \$216.51/\$229.84 for 48 months. Cost of borrowing is \$392.48/\$1032.32. Total obligation is \$10,392.48/\$11,032.32. Down payment and/or trade may be required. Monthly payment and cost of borrowing will vary depending on amount borrowed and down payment/trade. Offers apply as indicated to new 1999 models of Cavalier Coupe R7Z, Cavalier Z24 Coupe R7Q/Cavalier Sedan R7Q/Malibu R7Z equipped as described. Offers apply to qualified retail customers in the Ontario Chevrolet Dealer Marketing Association only. Dealer order or trade may be necessary. Limited time offer which may not be combined with other offers. Dealer may sell or lease for less. See your dealer(s) for conditions or details.