

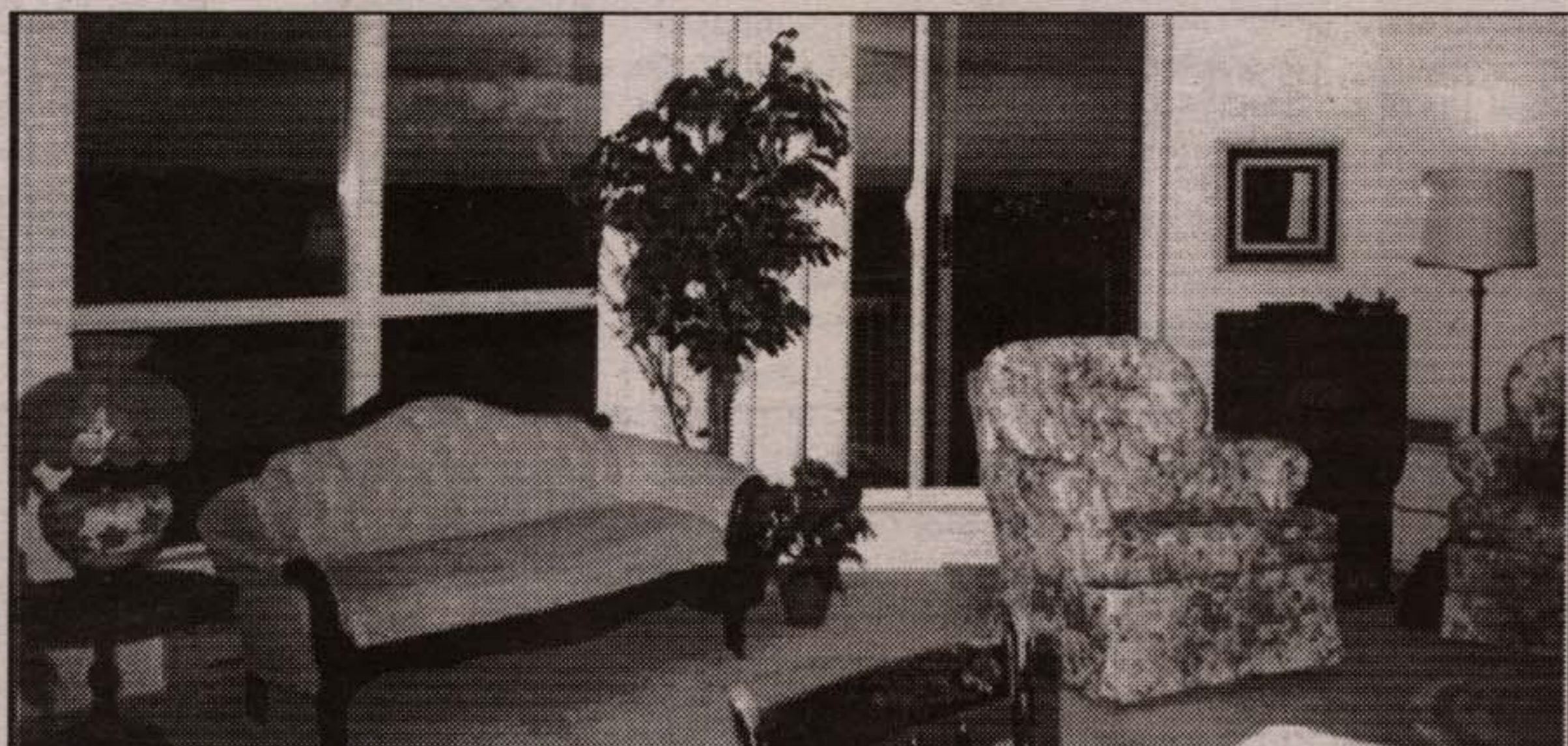


Donna Robbins*
Sales Rep.*

Johnson Associates
HALTON LTD., REALTOR

(905)
877-5165

TROUBLE FREE LIVING



UNIT 606, 26 HALL RD., GEORGETOWN
ONLY \$144,900

Gorgeous 5 room spacious, bright condominium with underground parking. Many inclusions: all window coverings, light fixtures & fans, B/I dishwasher, microwave, fridge, stove & water softener. Call Donna* for viewing.



"Helping people find their perfect nest!"

CHECK THESE OUT!!!



STARTER HOME
"PARK AREA"
\$159,900

Check out the hardwood floors and trims, the charming front porch, the huge fenced yard, detached garage/workshop. This home won't last long on the market. Call Carol McMurray*.



IMMACULATE

This home is perfectly maintained inside and out! Custom built, spacious living & dining rooms, 2 fireplaces, sun-porch, fenced yard, central location. Details from Carol McMurray*.



"FIRST TIME ON MARKET"

Gorgeous bungalow in excellent location - very well maintained - well landscaped and fenced - won't last long - Call Carol McMurray*.



CAROL McMURRAY* Sales Rep.*



877-5165

Johnson Associates
HALTON LTD., REALTOR

NEW LISTING

\$312,000



GRAND OLD LADY IN THE PARK AREA

- Charming yesteryear with modern touches
- 3+1 bedrooms, 3 bathrooms, two sunrooms
- Spacious principal rooms with high ceilings
- Original woodwork and oak floors throughout
- Many built-ins with beveled glass doors
- Gas fireplace, high baseboards and plate rails
- Modern kitchen with solarium breakfast room
- Master has 2 pc. ensuite, w/i closet and alcove
- Fabulous 80 x 124 private lot with mature trees
- \$40,000 spent on new pool, wrought iron fence
- Interlocking walkways and patio, landscaping
- Oversized 1-1/2 car garage with workshop area
- 4th bedroom is sunroom used as nursery or your choice
- High efficiency furnace 93, shingles etc. 92
- Central Air and CVAC
- Quaint mature area close to parks, schools, downtown

NEW LISTING

\$234,900



LOCATION! 4 BEDROOMS!
QUIET STREET! PRIVATE LOT!

- WHAT MORE CAN YOU ASK FOR?
- Bright and spacious, well maintained 2 storey home
- Gleaming hardwood floors and maple trim throughout
- Upgraded eat-in kitchen with b/i dishwasher
- Separate pantry all overlooking mature treed backyard
- Large living and dining room with walk-out
- 4 good sized bdms & plenty of closet space
- Upgraded 4 and 2 piece bathrooms
- Finished rec room, workshop, storage
- Water softener owned and included
- Shingles replaced 1991, new front door
- Red maple and flowering crabapple at front
- Single garage, dble driveway, huge deck, shed
- Entrance from home to garage, close to everything!

Johnson Associates
HALTON LTD., REALTOR

CALL LYNN DREWRY, Sales Rep.
FOR PRIVATE VIEWING



877-5165
(24 HR PAGER)