

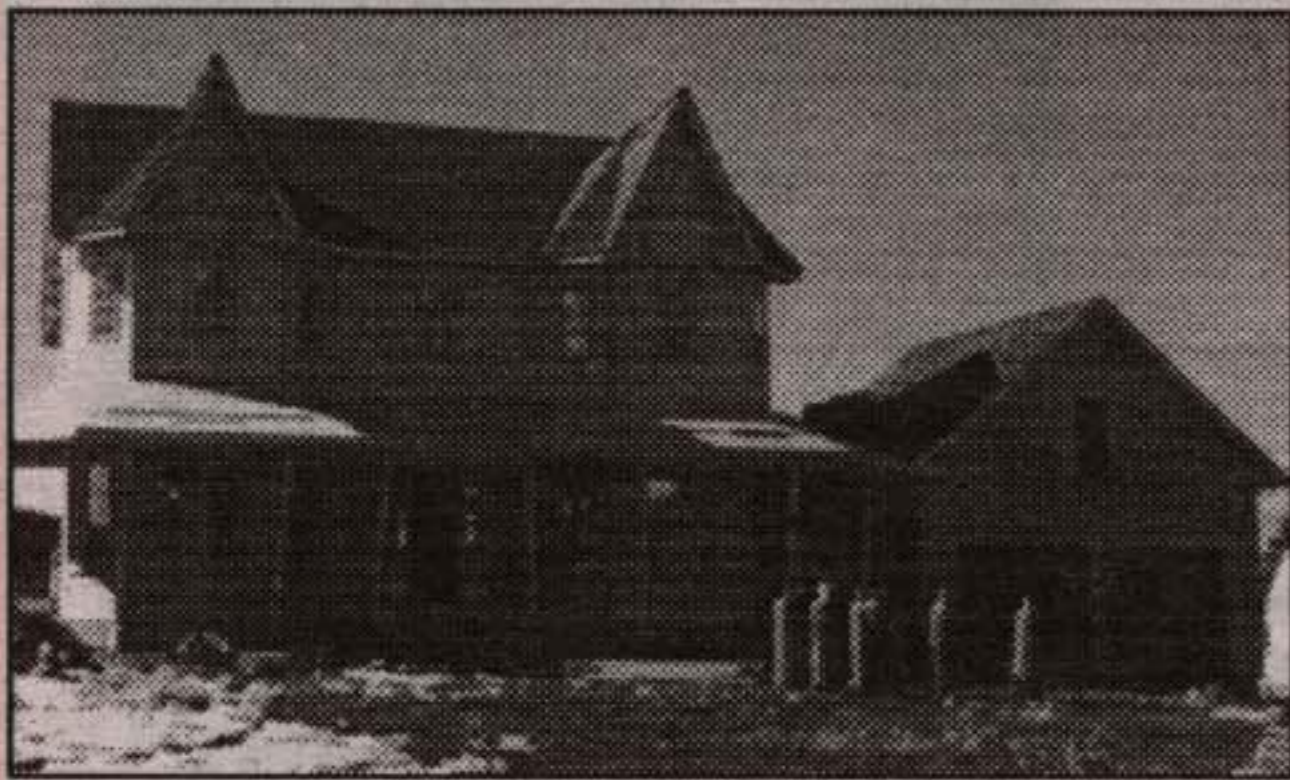
Say You Saw It In . . .

The Independent & Free Press Real Estate Digest

RE/MAX

BLUE SPRINGS REALTY (Halton) Corp.

CAROL WOOD*
*Sales Rep.
877-5211



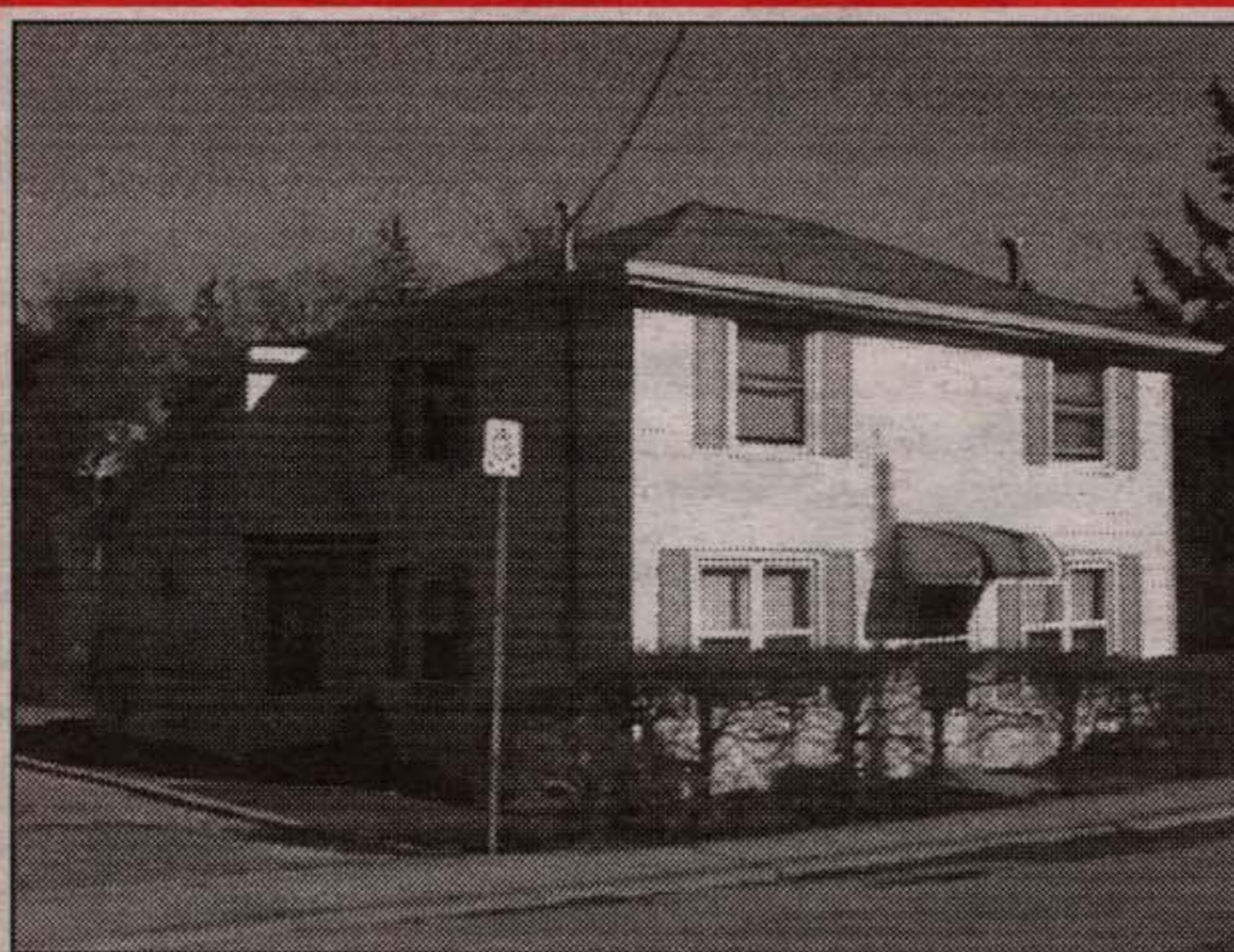
BUILD IT AND THEY WILL COME

And build it they did . . . just in time for you to choose your personal finishing touches. Victorian design, open concept, town water, natural gas and wonderful lot backing onto greenspace. Your wicker furniture will feel right at home on the wonderful wrap around front porch. Call Carol Wood* for your exclusive showing.



5 PARKVIEW

Here's your chance to live in Georgetown's finest neighbourhoods. A lovely 3 bedroom sidesplit with finished basement, large fenced yard and loaded with charm & character. Asking \$204,900. Call Carol Wood* at 877-5211.



GROW YOUR OWN

Annual, perennial or vegetable gardens, children or both!! This 3 bedroom home is sitting pretty on a huge lot (89' x 137'). Completely renovated - this home has a long list of upgrades. Kitchen is gorgeous - combined with family room with gas fireplace. There are 2 walkouts to the deck overlooking the private backyard. Newer windows, doors drywall, insulation, roof, wiring...the list is long!! You can move in for \$179,900 and not do a thing!!

RM043-99



DOUG MEAL*
*Sales Rep.
877-5211

RE/MAX

BLUE SPRINGS REALTY (Halton) Corp.



Maureen Plucinsky
Sales Representative
Town & Country Specialist

<http://www.aztec-net.com/~maureen>
maureen@aztec-net.com
Loc.: (905) 877-5211 Tor.: (905) 874-3051
Erin: (519) 833-7117 Fax: (905) 877-5154
1-800-834-5516

RE/MAX

Blue Springs Realty (Halton) Corp.



Orangeville: Secluded, well built, unique large home & a log cabin with 2 standing horse stalls, all on a rare 100 acre parcel of land. Pool. 5 min. E of hospital. Set far back from Hwy 9 with 1000ft frontage on Hwy 9. Natural gas available. Pond & stream. Rolling. 20ac in hav. No severance taken.



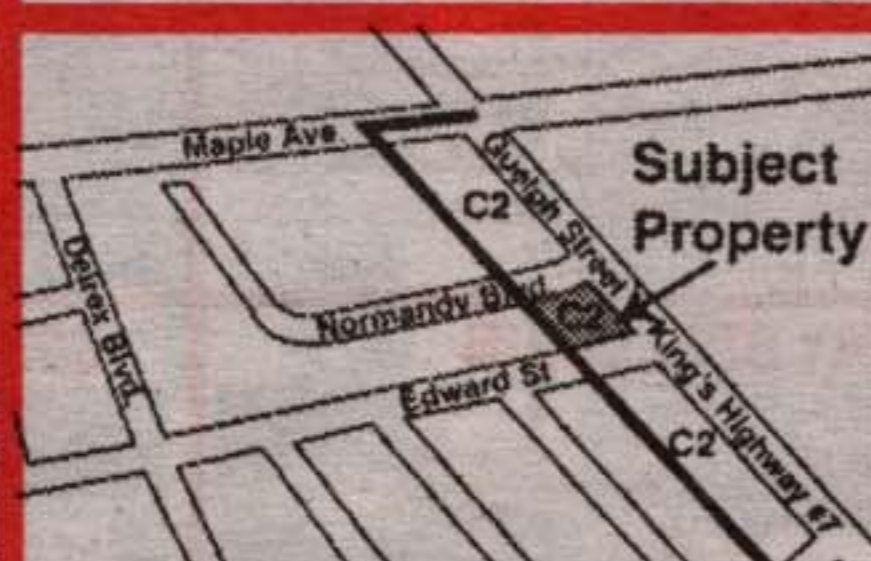
Campbellville: Stone, ~6000sqft on ~5 ac on quiet rd with quick access to Hwy 401 at the Guelph Line. Great Rm with 4 sided stone FP. 2 cir staircases to 2nd floor. Main fl Mbr. Fab kit. 2nd kit in Fam Rm. MF 5th bdrm suitable for office. Inground pool. Marley roof. Ground source heat pump. Excel well.



Erin: Vacant land, zoned agricultural. Possible pond site. ~749 ft. frontage x ~2000 ft. Treed & sloping. Under jurisdiction of GRCA. West of the village of Erin. North of Ospringle. Large parcel. Try an offer.



Quick access to Hwy #25 & #401
Halton Hills 1.4 acres \$379,500
~3000SF ~7 min to Milton GO. Four bdrms. 5, 5, 2pc. Hardwood & ceramics. 2 oak staircases. MBR with 5 pc. MF den & Fam rm with FP. Finished bsmt. Deck. Excel well. Lit drvwy. Privacy gates. ~3 yrs old. Priced to sell.



Zoning: C2, General Com.
Accumulated 3 parcels: brick building with 2 store fronts, 3 homes & ice cream store on ~ half acre. 3 road frontages. Perfect for drive through business. High traffic count. Loc across the road from imminent developmnt & next to plaza.



Erin: Perfect for extended family & business. 3+2 bdrms, 5 wash rm & spa rm. In-law suite with walk-out to yard & pool area. Office with 2 pc washrm & separate entrance. Set back from road on 1.4 landscaped acres with inground pool. 2 walk-outs from upper level to deck overlooking pool. Value!

THE MARKET IS MOVING - ARE YOU?

WAYNE

ROYAL LEPAGE INDEPENDENTLY OWNED AND OPERATED

Country Specialists

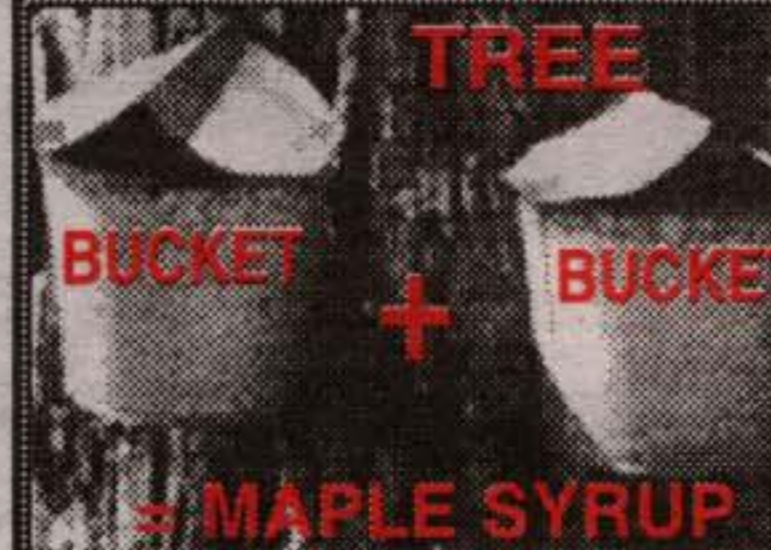
Wayne Baguley* SALES REP.*

(905) 450-3355 or (519) 941-5151

Don't . . . forget to call "Wayne Baguley" & Start packing your trunk & move On....

School is almost out, great time to move. Call Wayne Baguley* (519) 941-5151, (905) 450-3355.

Wayne Baguley, Sales Rep. (905) 450-3355 or (519) 951-5151

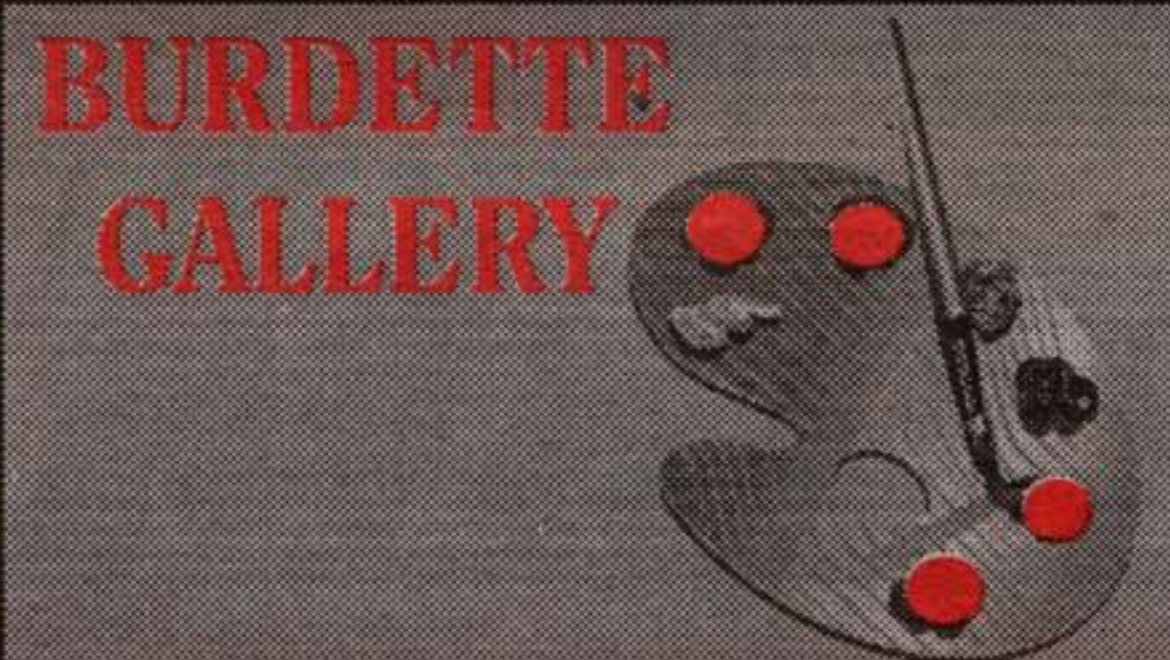


NEW AT \$499,000 ALMOST FINISHED & THE MAPLE SYRUP IS RUNNING
3,000 sq. ft. brick home, 55 scenic acres. Views, open spaces, 8 acres of hardwood Maple bush pond. Call Wayne Baguley* (519) 941-5151, (905) 450-3355.

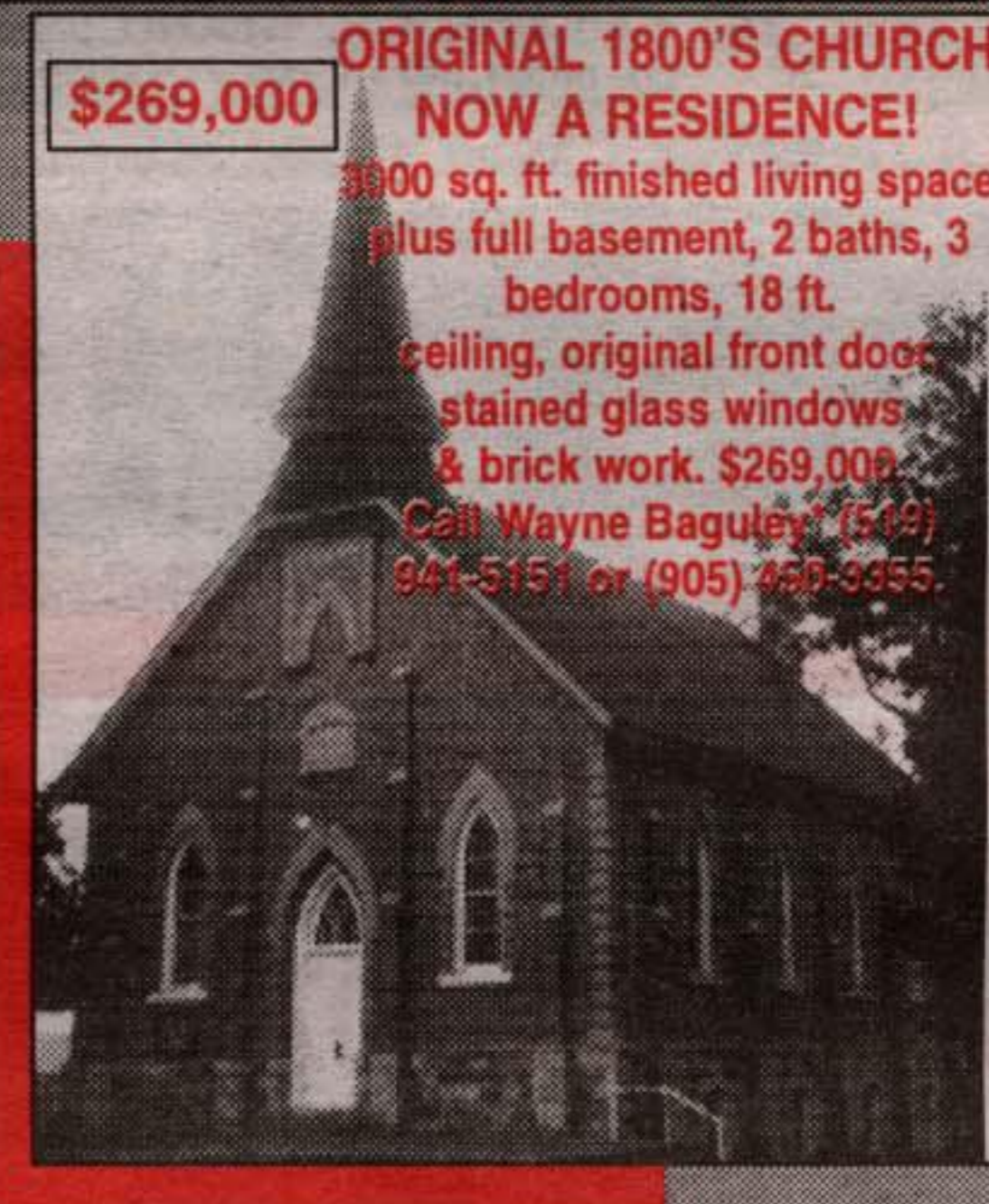
I'M LOOKING FOR NEW PROPERTIES TO SELL. CALL

WOW!! DON'T MISS THIS!! \$274,000

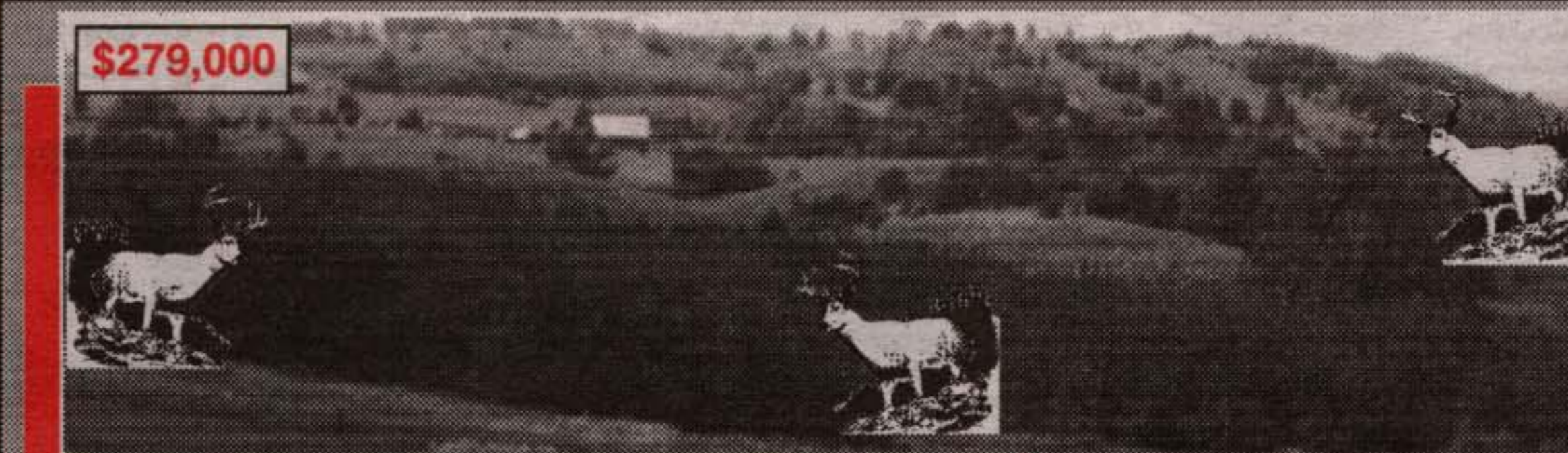
2 storey brick & vinyl siding, 4 bedrooms, 2 baths, beautiful sunken family room, excellent kitchen & dining area. 10 acres, maturely treed, trail. Small horse barn and separate work shop plus attached garage. Excellent location close to 24 Hwy. Call Wayne Baguley* (519) 941-5151 or (905) 450-3355.



BURDETTE GALLERY
Well known artists, such as Robert Bateman, Trish Romance and Mr. Burdette himself have appeared at the Gallery with their famous works of art. Now an opportunity to view the 6000 sq. ft. gallery, separate studio and Paul Burdette's personal home on 65 acres of private, scenic rolling land, heavily bushed. Consider the purchase of this landmark in the country. Offered at \$419,000. By appointment only . . . call Wayne Baguley* (519) 941-5151 or (905) 450-3355.



\$269,000 ORIGINAL 1800'S CHURCH NOW A RESIDENCE!
3900 sq. ft. finished living space plus full basement, 2 baths, 3 bedrooms, 18 ft. ceiling, original front door, stained glass windows & brick work. \$269,000. Call Wayne Baguley* (519) 941-5151 or (905) 450-3355.



INCREDIBLE VIEWS & HILLS - LOG & BOARD & BATTEN
OPTIONAL HERITAGE PACKAGE AVAILABLE
Charming country home, 2 baths, 3 bedrooms, walkout basement, loft overlooking living room. Call Wayne Baguley* (519) 941-5151, (905) 450-3355.

VACANT LAND:
• 1.3 acre building lot. Treed & small stream, backing onto scenic land.
• 97 acres, open spaces, treed, excellent farm and recreational property. \$189,000.

Call Wayne Baguley* (519) 941-5151 or (905) 450-3355.

THE MARKET IS MOVING - ARE YOU?



BAGULEY

ROYAL

LEPAGE

RCCR

REALTY

ROYAL

LEPAGE

RCCR

REALTY

BAGULEY

WAYNE