

MARTHA SUMMERS*

Sales Rep.

877-5165

874-3040 (Tor.)
(519) 833-9714 (Erin)

247 Guelph St.,
Georgetown



President's Circle
Award Winner

Performance Group
Member

1993 1994 1995
1996 1997 1998



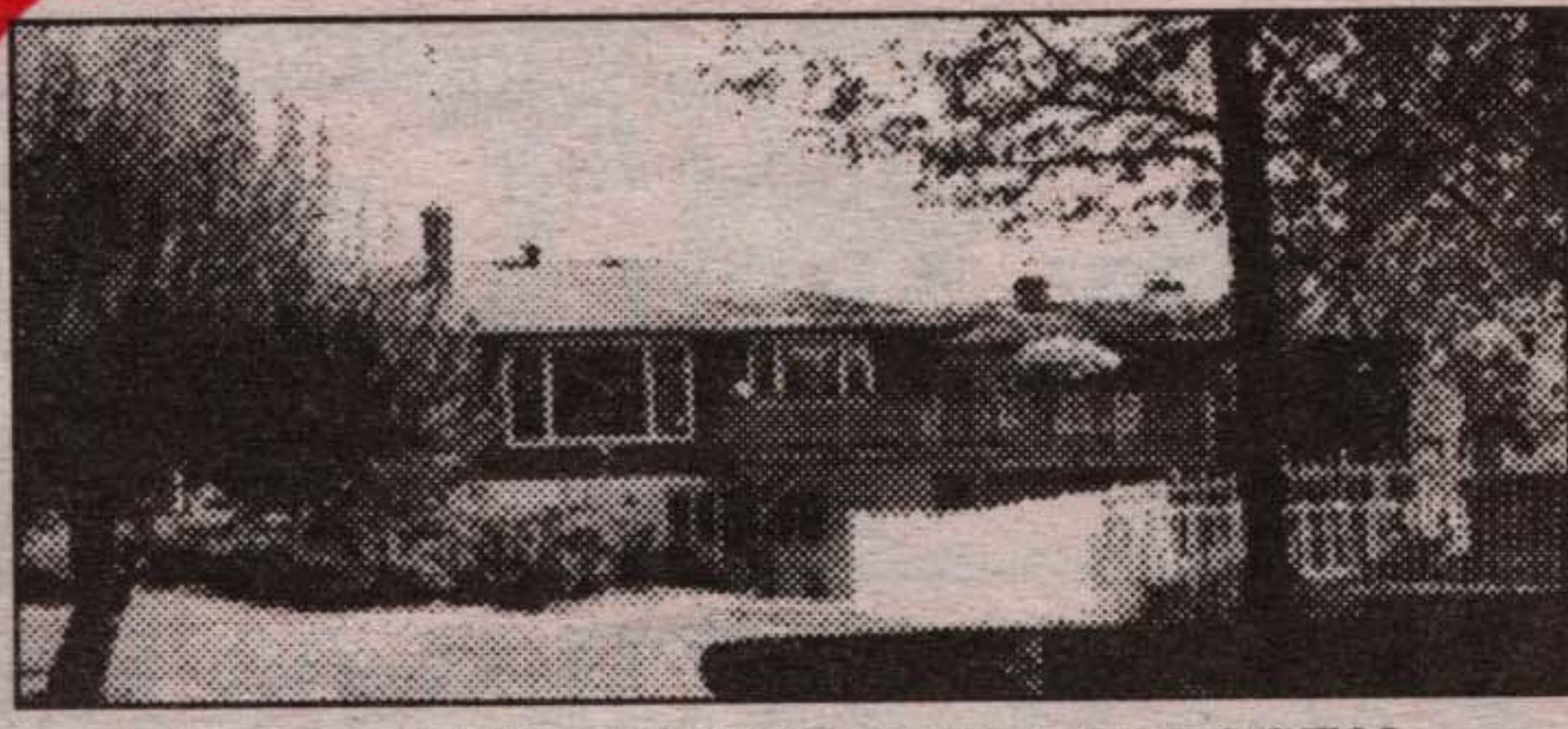
Johnson Associates
HALTON LTD., REALTOR



"MARTHA SUMMERS= PROVEN PERFORMANCE"

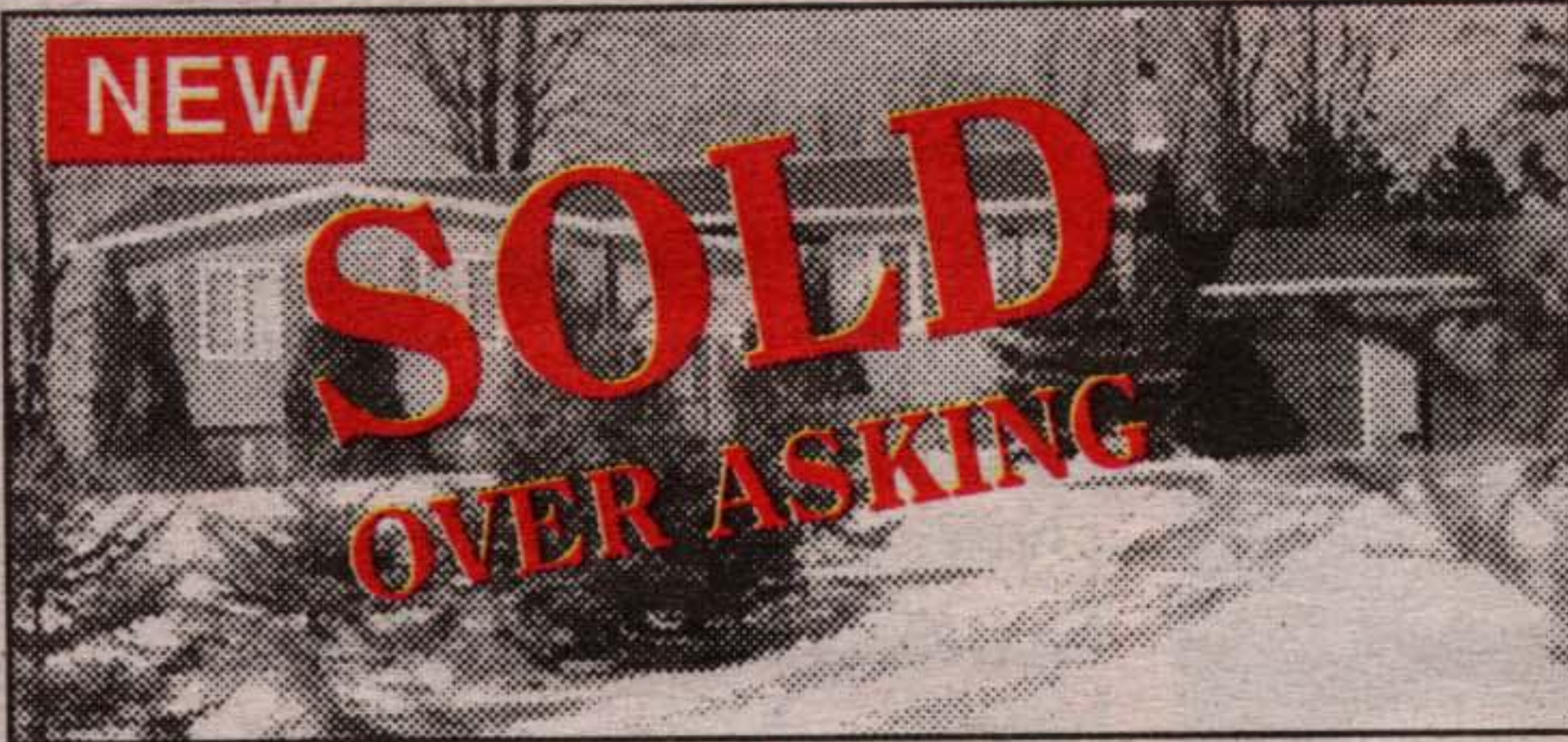
Consistent Proven Performance in "Town & Country"

Properties in Halton Hills, Caledon and Erin



NEED A WORKSHOP AND A GARAGE??

Read on, we have it here! Total parking or garage space for 4 full sized vehicles on 2 different levels. Plus you have a well maintained 3 bedroom brick bungalow with loads of upgrades including the windows, the shingles, the kitchen, the bathroom and carpet. The huge deck overlooking the pretty treed two acres and the inground pool are extras. And all this on a paved road minutes north of Georgetown. \$264,000. **Martha Summers*** CON-98



WATCH THE SUNSETS - 3.9 ACRES OF ERIN VIEWS
Well maintained 3+2 bdrm family home. Propane fireplace in living room, walkout from dining room to wrap around deck, eat-in oak kitchen, master with 4 piece ensuite. Huge rec rm w/wood stove. Insert in brick fireplace and huge games rm or 5th bdrm. Third bathroom with whirlpool. Separate entrance to basement from attached 2 car garage. What are you waiting for? Call **Martha Summers*** today. \$267,000.



NEW PRICE BELFOUNTAIN COUNTRYSIDE
Very pretty 90 acres with mixed bush, fabulous views and open meadow suitable for horses. Contemporary home with lots of windows and walkouts overlooking the valley. Two car attached garage and great possibilities. River frontage with a Fork of the Credit flowing through. Something special at \$499,000. **Martha Summers***



NEW PRICE FORKS OF THE CREDIT - RETREAT
\$249,000 for this charming 4 acres with a quaint almost century home situated overlooking the hardwood ravine. Totally private yet walking distance to the conservation trails to hike or ski. Open concept with large windows and lots of natural wood. The brick fireplace just adds to the warmth. A jewel. **Martha Summers*** FEL-98



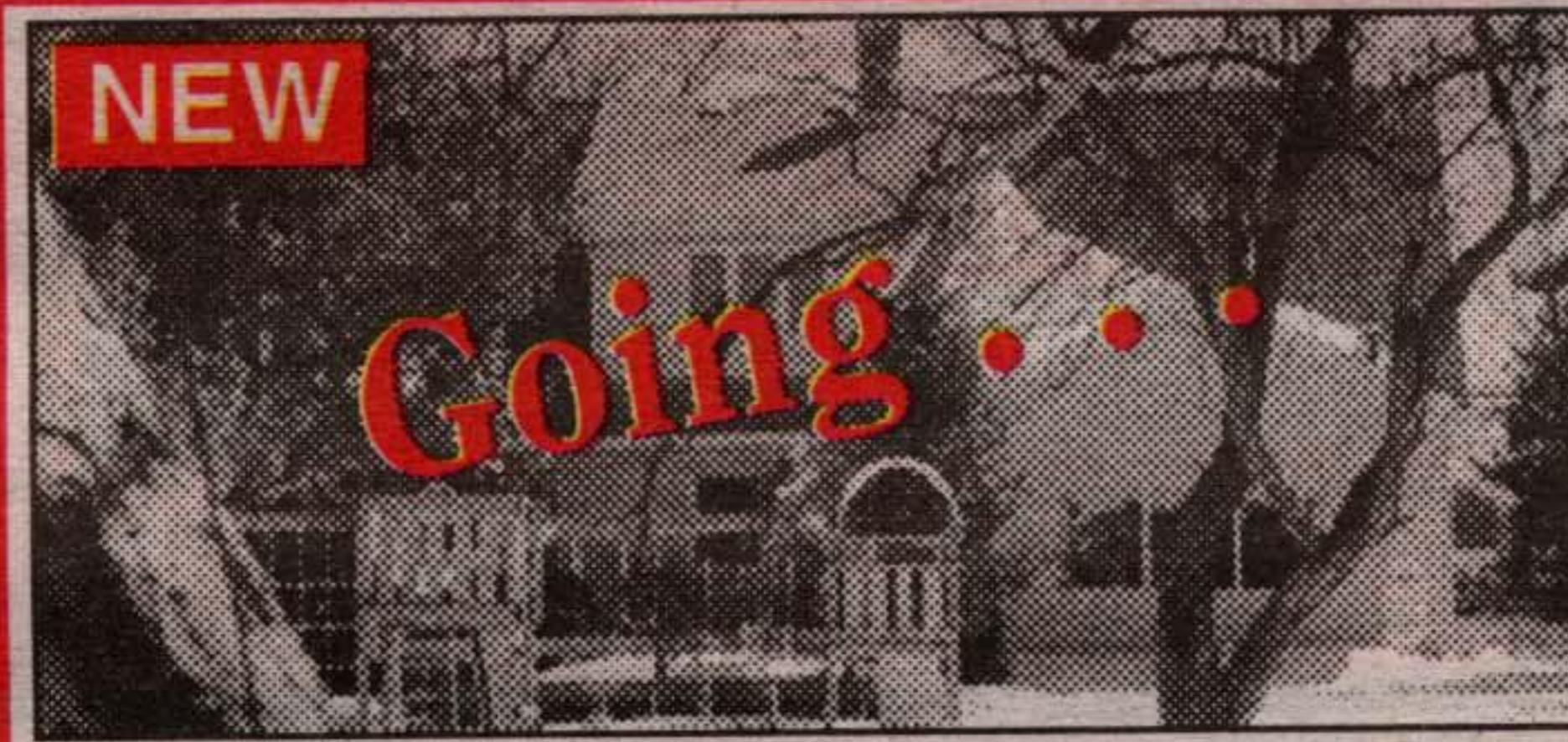
NEW LOOK AT THIS LOT - BALLINAFAD \$249,000
1/2 acre backing onto woods with updated 3 bdrm bungalow. Huge entrance, updated oak kitchen w/walkout to a large deck with planter boxes ready for your spring flowers. Lge living room, dining rm and huge rec room with stone fireplace. Extra large 2 car garage, paved driveway and paved road only 12 minutes to the Georgetown "GO" station. Move in and relax. **Martha Summers***



SOUTH IS WHERE YOU WANT TO BE!! \$224,900



OUTSKIRTS OF GEORGETOWN
100 ft. x 279 ft. lot on dead end street minutes to Town. Stone fireplace in the living room, eat-in kitchen with upgraded cabinets and 3 spacious bedrooms. Great sunroom to sit and enjoy the birds and the sun. Huge recreation room with high ceilings and lots of room for the billiard table. Separate entrance to the basement from the garage. Well maintained by original owners. \$254,900. **Martha Summers*** FEN-99



NEW ENJOY NATURE IN BELFOUNTAIN \$264,900
Totally renovated, open concept, 3 bdrm on 70 x 298 ft. lot w/mature trees and no-one in behind you. Floor to ceiling stone fireplace w/oak mantle, huge living rm/dining rm with hdwd flrs. Mn fl fam rm w/vaulted ceilings, large windows and a walkout out the deck. The kitchen has white raised panel cupboards, a breakfast bar and ceramic tiles. This is one to move in and enjoy and you can also walk to the store, the park or the school. Call **Martha Summers*** now!!!



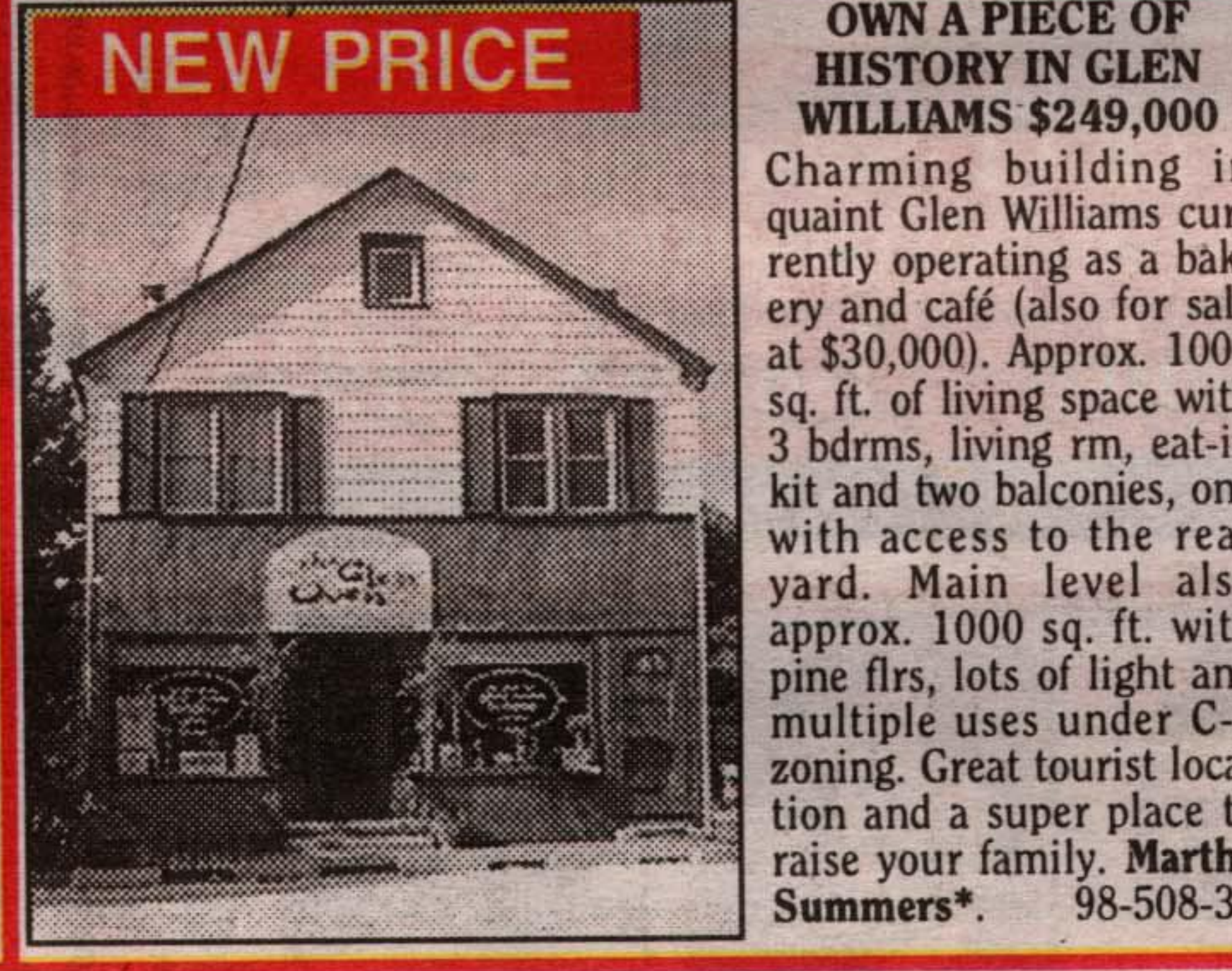
NEW PRICE HOBBY FARM - WOODS, WATER, BARN AND PADDOCKS
Amazing 23 acres that has everything even views. Home offers warm family room with fireplace and walkout to deck, hot tub/sun room with wood interior, finished lower level with 4th bdrm, rec/rm w/woodstove and a bathroom. Take a closer look at \$314,900. **Martha Summers*** STE-98



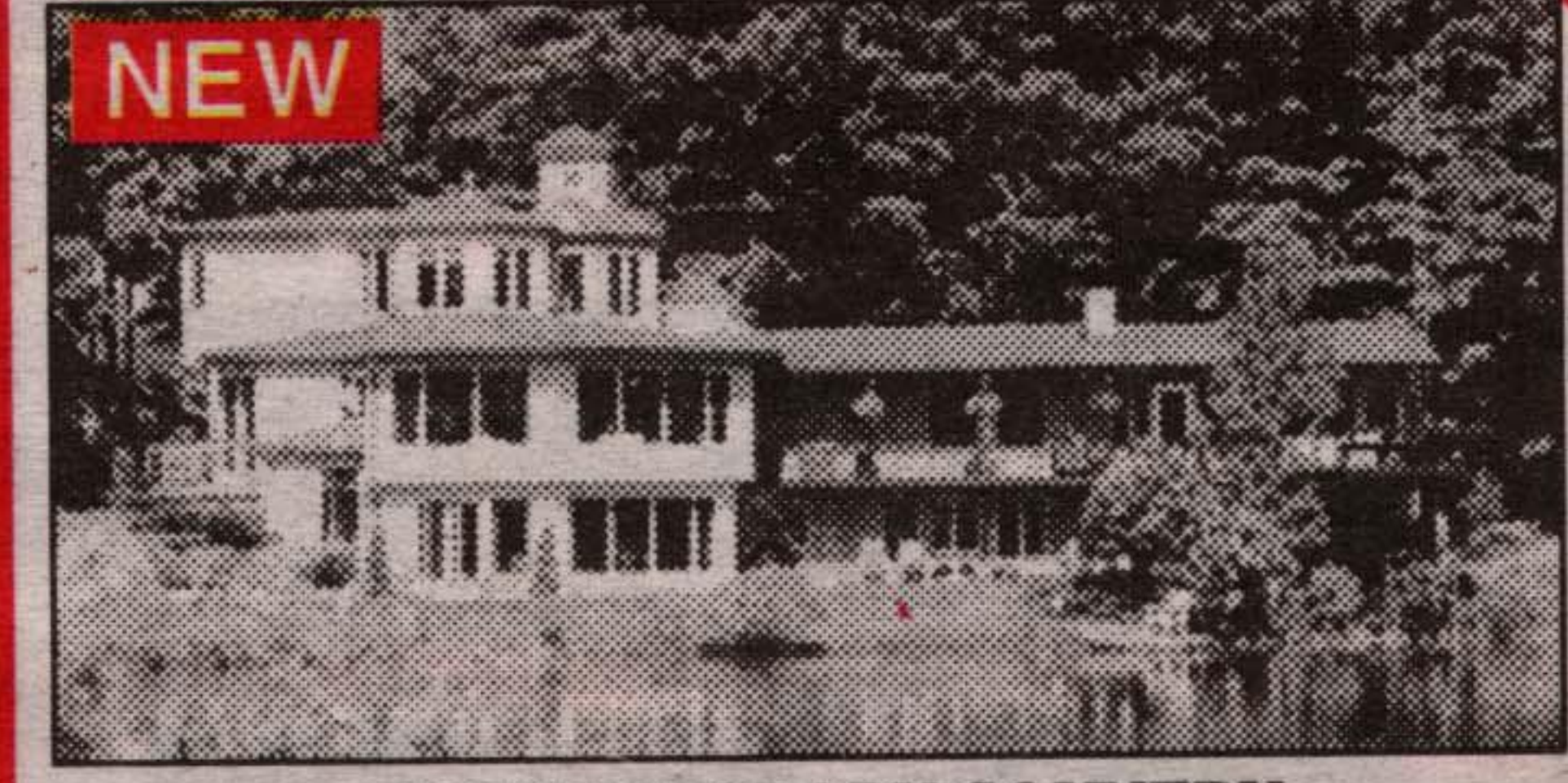
- WANTED: WE HAVE CLIENTS!**
- 3 bedroom bungalow on cres./crt location. - **SOLD**
 - Rural Estate property with horse potential up to 800 k.
 - Starter with character on nice lot.
 - Country home on quiet road up to \$270,000.
 - 1 & 2 acre lots - Erin/Halton/Caledon



THE SHOP'S READY, ALL YOU NEED IS YOUR HOUSE!!
Superb one acre property located just north of Glen Williams with hydro, well and driveway. 4 bay insulated shop with one bay converted to insulated office. This is one you must see. \$169,000. **TYR-99**



NEW PRICE OWN A PIECE OF HISTORY IN GLEN WILLIAMS \$249,000
Charming building in quaint Glen Williams currently operating as a bakery and café (also for sale at \$30,000). Approx. 1000 sq. ft. of living space with 3 bdrms, living rm, eat-in kit and two balconies, one with access to the rear yard. Main level also approx. 1000 sq. ft. with pine flrs, lots of light and multiple uses under C-1 zoning. Great tourist location and a super place to raise your family. **Martha Summers*** 98-508-30



NEW CONTEMPORARY COUNTRY
Superb and private 21 acre property with custom open concept home situated to take advantage of the views of the large spring fed pond and hardwood forest. Designed with your every wish in mind. Perfect for home office use with finished lower level. Ideally set up for the car enthusiast with three separate garages. Something special at \$799,000. Adjacent 2 acre lot available at \$85,000. **Martha Summers***



NEW SUPERB AT \$519,000!!
Listed and sold for more than asking in less than 6 hours . . . and I still have a purchaser looking for something just like this! If you are thinking of selling please call **Martha Summers***.



NEW THE SAP IS RUNNING!! THE SYRUP IS READY!!
You won't find a nicer piece of maintained hardwoods than this, plus rolling countryside and pasture. 48 acres in all. The home boasts a four season sunroom overlooking the property, and a large open concept kitchen/living room with a fireplace and lots of windows, a finished rec room with wet bar and more. There is also a 40' x 80' workshop with 3 - 12 ft. doors plus a run in barn and paddocks. It's all here at \$449,000. **Martha Summers***



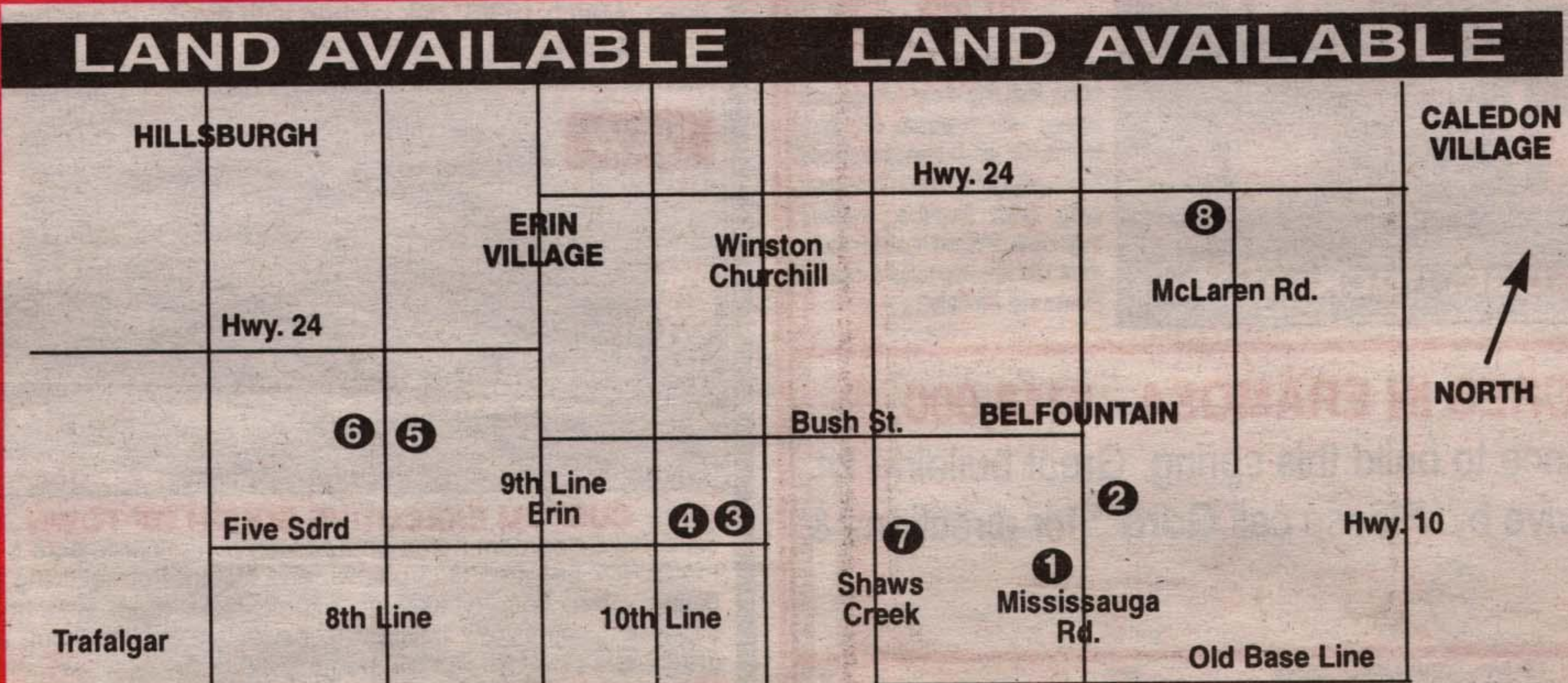
NEW 7 ACRES ROLLING ERIN COUNTRYSIDE \$294,900
Large family needed to enjoy this 5 bedroom home featuring hardwood floors, 2 fireplaces, separate living room and dining room, main floor family room plus a four season sunroom to take advantage of the evening sunsets. Two car attached garage plus a separate 20' x 40' insulated and heated workshop with well finished and designed office above. The home is well set back for country privacy with a paved driveway. **Martha Summers***



NEW PRICE LOOK AT THIS YARD - \$181,900
No need to go to the park with this at your back door. 3 + 1 bedroom on quiet crescent location with finished basement with 2nd washroom and kitchenette. Eat-in kitchen, hardwood floors and very open. Hurry - these go really really quickly. **Martha Summers*** HAS-99



THIS IS THE PLACE TO START!!! \$148,000



1. 95 rolling acres, trees, meadow stream - \$299,000.
2. 50 treed acres - \$215,000.
3. 32 acres - views, pond potential - \$199,000. - **SOLD**
4. 2 acres - bush - \$70,000. - **SOLD**
5. 46 acres - bush, build envelope designated, driveway culvert is in - \$139,000.
6. 38 acres - bush, stream rises on the property - \$119,000.
7. 37 open acres - stream - \$219,000.
8. Near conservation & stream - 2 acres - \$59,000.

"MARTHA SUMMERS = PROVEN PERFORMANCE"