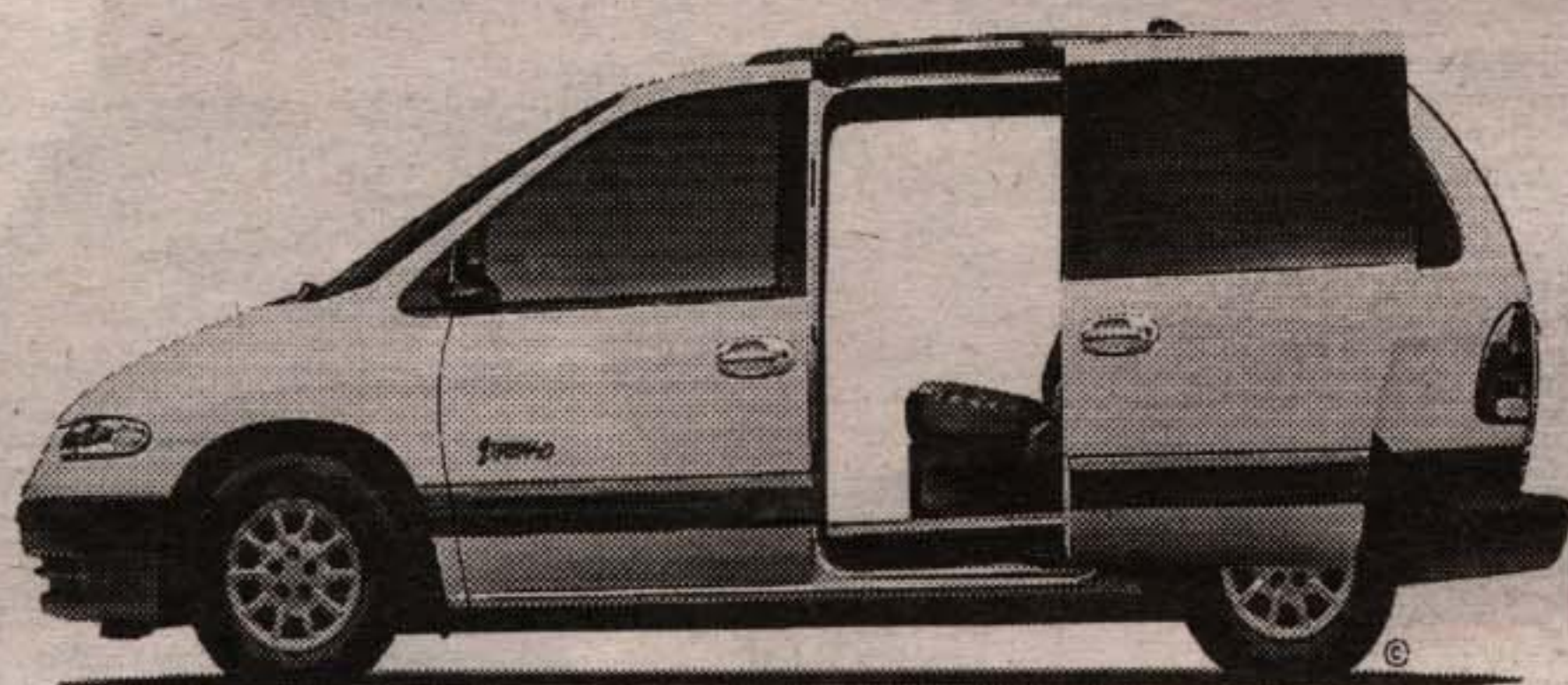


WIN CANADA'S #1 SELLING MINIVAN*



PICTURE YOURSELF IN A 1999 CHRYSLER.



**1999 Dodge
Caravan/Plymouth
Voyager All New 26T
Family Value Package**

CARGUIDE'S 1999 "BEST BUY" AWARDED FOR 3RD STRAIGHT YEAR*.

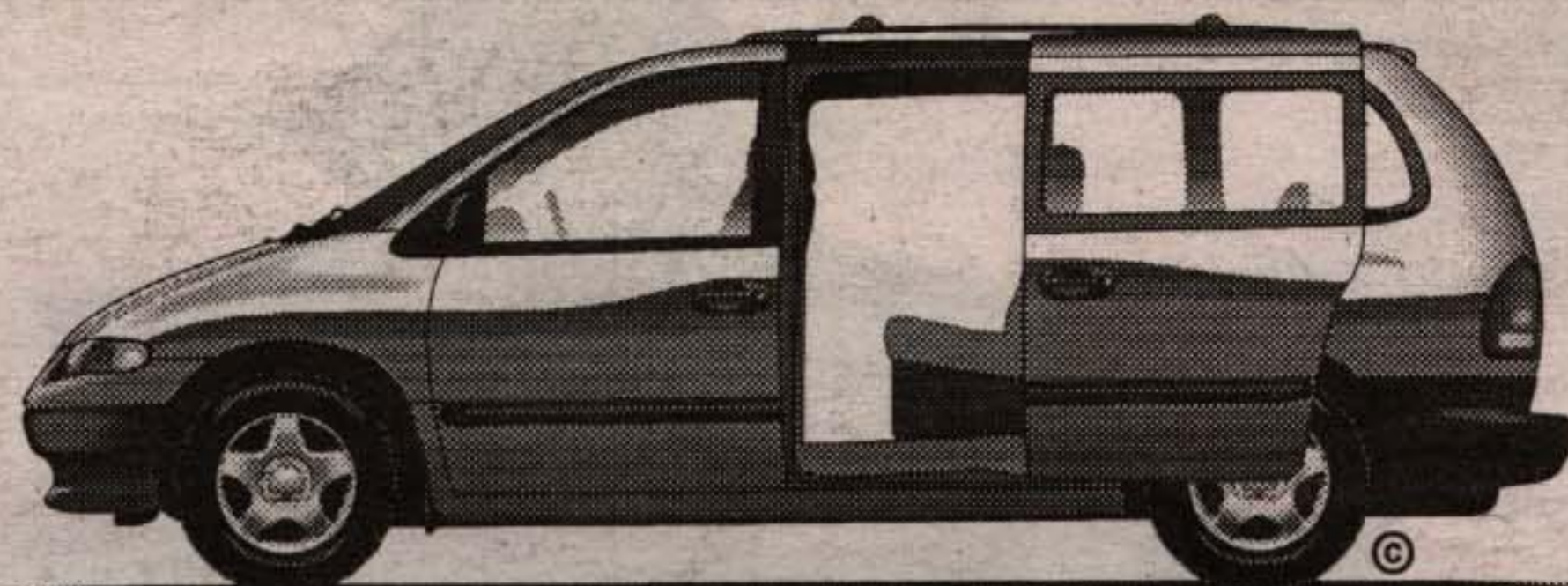
\$239/MO[†]
for 36 months.
\$855. freight, \$300. security
deposit. Plus \$3,500.
downpayment or equivalent trade.

OR
PURCHASE
FINANCING
FOR

2.8%^{††}
up to 36
months

Now Includes: •Power windows, locks and mirrors •Power rear window quarter vents •Air conditioning •Speed control •Tilt steering •Rear seat head rests. •3.0L V6 engine •4-speed automatic transmission •7 passenger seating •Easy Out Roller Seats™ •Next Generation Dual Air Bags •Roof rack •AM/FM stereo •Child-protection rear door locks •Side-door impact beams •3 year or 60,000 km warranty •Fuel efficiency: City 12.7L/100 km (22 mpg); Hwy. 8.3L/100 km (34 mpg) •Plus a complimentary tank of fuel!^{††}

INCLUDES DUAL SIDING DOORS



**1999 Dodge Grand
Caravan/Plymouth
Grand Voyager 'SE'
29D Package**

\$269/MO[†]
for 36 months.
\$855. freight, \$350. security
deposit. Plus \$4,000.
downpayment or equivalent trade.

OR
PURCHASE
FINANCING
FOR

2.8%^{††}
up to 36
months

•3.8L V6 engine •4-speed automatic transmission •7 passenger seating •Easy Out Roller Seats™ •Dual sliding doors •Next Generation Dual Air Bags •Air conditioning •Roof rack •Power windows/locks/mirrors •Power rear window quarter vents •Tilt steering •Speed control •Rear seat headrests •Sunscreen glass •AM/FM stereo with cassette •Child-protection rear door locks •Side-door impact beams •3 year or 60,000 km warranty •Fuel efficiency: City 13.8L/100 km (20 mpg); Hwy. 9.1L/100 km (31 mpg) •Plus a complimentary tank of fuel!^{††}

THERE'S NEVER BEEN A BETTER TIME TO PUT YOURSELF IN A CHRYSLER. SPECIAL LEASE RATES AND FACTORY PURCHASE FINANCING ON SELECTED MODELS AND MORE. PLUS A CHANCE TO WIN CANADA'S #1 MINIVAN*.



**1999 Neon
22D
Package**

\$299/MO[†]
for 36 months.
All inclusive.
Zero security deposit.
Freight included
DRIVE IT AWAY

LEASE/MONTH	\$299
DOWN PAYMENT	\$0
FREIGHT	INCLUDED
AIR/FUEL TAX	INCLUDED
PPSA	INCLUDED
GST/PST	\$44.85
TOTAL DUE ON DELIVERY*	\$343.85

OR PURCHASE
FINANCING FOR
1.8%
up to 60 months

1999 Neon gives you the best value and fun it's class. 22D Package Includes: •2.0L 16 Valve 132 hp engine •Automatic transmission •"Next-Generation" dual air bags •Tilt steering •60/40 Split folding rear seat •Remote trunk release •Air Conditioning •Floor console •Tinted Glass •AM/FM Stereo cassette with CD Controls & Port •Child protection rear door locks •Side-door impact beams •Plus a complimentary tank of fuel!^{††}



**1999 Stratus
/Breeze
24A
Package**

\$239/MO[†]
for 36 months.
\$715. freight, \$275. security
deposit. Plus \$3,780
downpayment or equivalent trade.

OR
PURCHASE
FINANCING
FOR

2.8%^{††}
up to 36
months

•24L 16 V engine •4-speed automatic transmission •Next Generation Dual Air Bags •Tilt steering •Air conditioning with rear seat air and heat •Floor console •Solar-control front windshield •Tinted glass •Dual remote mirrors •Speed control •Lower lift-over trunk •Child-protection rear door locks •AM/FM stereo with cassette •Side-door impact beams •Plus a complimentary tank of fuel!^{††}

Vehicles not exactly as illustrated.

Chrysler customers read the fine print: *†† These are limited time offers which may not be combined with any other offers except Grad Rebates and apply to retail deliveries for personal use only on all new in-stock 1999 vehicles. Retailer may sell/lease for less. Retailer order/trade may be necessary. Leases/financing subject to approval by Chrysler Credit Canada Ltd. Leases/financing exclude freight, licence, insurance, registration and taxes. Financing may include taxes. See retailer for complete details and conditions. †Based on a 36 month lease for vehicles equipped as described: Dodge Caravan/Plymouth Voyager 26T+GKD+AAF; Dodge Grand Caravan/Plymouth Grand Voyager 'SE' 29D+AAA+CYS; Dodge/Plymouth Neon 22D; Dodge Stratus/Plymouth Breeze 24A+RAS. Total lease obligations: \$13,774 Caravan/Voyager; \$16,521 Grand Caravan/Voyager; \$10,764 Neon; \$13,374 Stratus/Breeze. Lease finance interest rates based on a 36 month term: 4.7% Caravan/Voyager; 4.7% Grand Caravan/Voyager; 5.6% Neon; 6.8% Breeze/Stratus. Kilometres are limited to 61,200. Charge of \$0.12/km for excess kilometres. These are closed end leases with no buyback requirements. †† 1.8% financing up to 36 months term on all 1999 minivans and Stratus/Breeze. Example: \$15,000/20,000/25,000/30,000/35,000 @ 2.8% APR/36 month term: monthly payment is \$434.90/579.86/724.83/869.79/1,014.76. Cost of borrowing is: \$656.30/875.07/1,083.84/1,312.60/1,531.37. Total obligation is \$15,656.30/20,875.07/26,083.84/31,312.60/36,531.37. These are sample calculations only. †† 1.8% financing up to 60 months on 1999 Neons. *Based on balloting for the 1999 Carguide Awards. Dodge Caravan wins Best Buy Award in the Minivan Category for the third straight year. †No purchase necessary. There will be (5) Grand Prizes awarded, one for each of the following regions: British Columbia, Ontario, Atlantic Alberta and Saskatchewan/Manitoba. Each Grand Prize consists of a 1999 Plymouth Voyager/Dodge Caravan 26T+GKD, approximate retail value \$30,000.00 each. Selected entrants must correctly answer a skill testing question. The contest is open to all residents of Canada (excluding Quebec) over the age of majority who have a valid drivers license, except employees of Chrysler Canada, participating retailers, affiliated companies, and persons domiciled with any of the above. For a full set of contest rules please see ballot box in-store or send a self-addressed envelope to: PICTURE YOURSELF IN A CHRYSLER CONTEST, P.O. Box 4099, Paris, Ontario N3L 3W9. **Offer applies to select models excluding Dodge Viper and Plymouth Prowler. Rebate includes GST. Limited time offer applies to university and college graduates between Oct. 1, 1995 and September 30, 1998. This is a 5-year or 100,000 km Powertrain Service Contract. See your dealer for complete details on coverage and terms. ††A full tank of fuel with every purchase or lease of a new 1999 vehicle (retail or fleet). †††Fuel efficiency ratings determined using approved Transport Canada Test methods. Visit us today at: www.chryslercanada.ca



GEORGETOWN CHRYSLER JEEP
GEORGETOWN CHRYSLER (1998) LTD.
336 GUELPH ST., GEORGETOWN
877-0149 877-5108 TOR. 874-4277



website address: www.haltonhills.com/georgetownchrysler