

YOUR NEIGHBOURHOOD ONTARIO HONDA DEALERS ARE

# ROLLING OUT

THE NEW

# 1999

## HONDA MODELS



### CIVIC HATCHBACK CX

- 5-Speed Manual Transmission • AM/FM Stereo • Driver's Airbag
- 4-Wheel Independent Double-Wishbone Suspension
- Rear Wiper/Washer • 50/50 Fold-Down Rear Seatback • New Head & Tail Light Appearance

LEASE FOR	
\$	<b>198</b> ✓
With \$1830 Down	
Or With \$0 Down	\$238✓
Or With \$3000 Down	\$168✓

per month for 48 months, freight & P.D.E. included

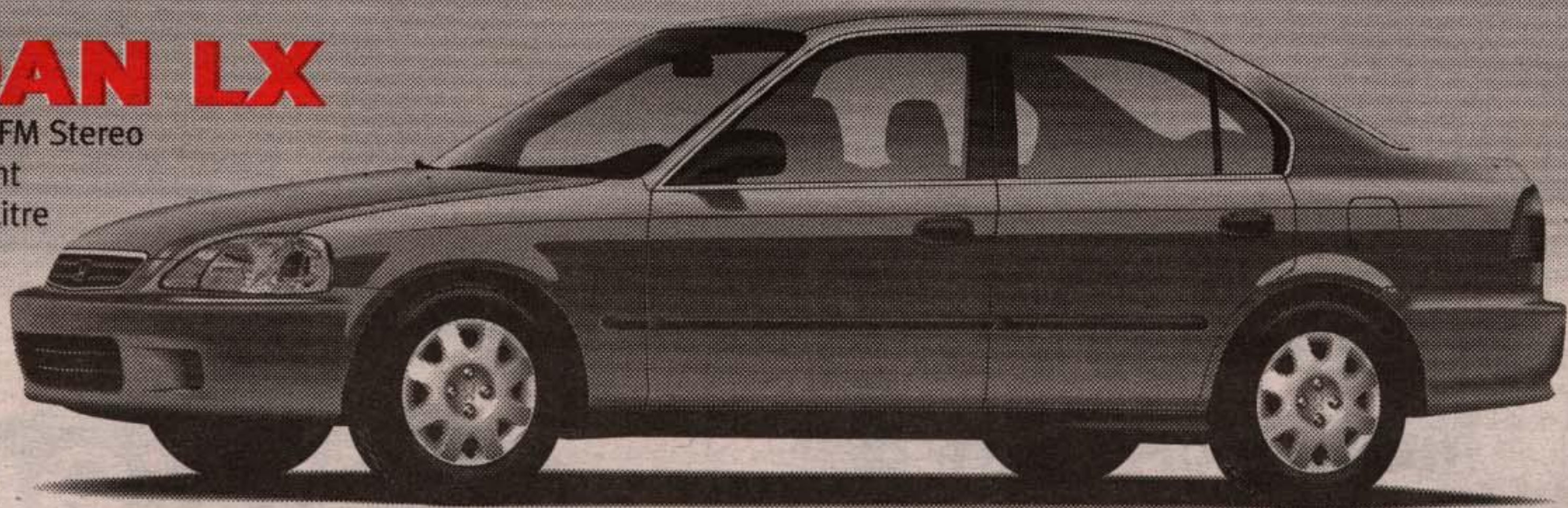
LEASE FOR

\$	<b>208</b> *
With \$1865 Down	
Or With \$0 Down	\$248*
Or With \$3000 Down	\$178*

per month for 48 months, freight & P.D.E. included

### CIVIC SEDAN LX

- 5-Speed Manual Transmission • AM/FM Stereo
- Dual Airbags • 4-Wheel Independent Double-Wishbone Suspension • 1.6 Litre 106-hp SOHC 16-Valve Engine
- Re-Designed Front & Rear Styling
- Re-Designed Centre-Console



LEASE FOR

\$	<b>318</b> †
With \$1990 Down	
Or With \$0 Down	\$368†
Or With \$3000 Down	\$298†

per month for 48 months, freight & P.D.E. included

### ACCORD SEDAN LX

- Air Conditioning • Automatic Transmission • ABS Brakes
- AM/FM Stereo with Cassette • Dual Airbags
- 2.3 Litre 150-hp VTEC Engine
- Power Windows & Door Locks



## THE ALL-NEW ODYSSEY IS HERE!

### ODYSSEY LX

- 210-hp, 3.5 Litre V-6 VTEC Engine • Automatic Transmission • Dual Sliding Doors • ABS Brakes • Power Windows, Mirrors & Door Locks
- AM/FM Stereo Cassette with 4 Speakers • Front & Rear Air Conditioning with Micron Air Filter • Dual Airbags • Rear "Magic Seat"™
- Removable, Second-Row Captain's Chairs

MSRP **\$30,600**✓✓



Space. The all-new Odyssey.



BUILT WITHOUT COMPROMISE

Your Neighbourhood  
**ONTARIO**  
**HONDA**  
DEALERS

HCFI Lease offers are available, on approved credit, only through Honda Canada Finance Inc. for a limited time. Lease payments shown are for 48 months and include \$850 for freight and P.D.E. with 96,000 km allowance (10¢/km exceeding 96,000 km applies). Taxes, licence and insurance are additional. ✓Based on a new 1999 Civic Hatchback CX 5-Speed (model EJ632X) \$198/\$238/\$168 per month for 48 months (total lease obligation of \$9,504/\$11,424/\$8,064). Down payment or equivalent trade of \$1,830/\$0/\$3,000 required, plus first monthly payment and security deposit (\$250/\$275/\$200). Option to purchase at lease end for \$7,140 plus taxes. A.L.R. 9.0%. \*Based on a new 1999 Civic Sedan LX 5-Speed (model EJ653X) \$208/\$248/\$178 per month for 48 months (total lease obligation of \$9,984/\$11,904/\$8,544). Down payment or equivalent trade of \$1,865/\$0/\$3,000 required, plus first monthly payment and security deposit (\$250/\$300/\$225). Option to purchase at lease end for \$8,109 plus taxes. A.L.R. 7.2%. †Based on a new 1999 Accord Sedan LX Auto. (model CG564X). \$318/\$368/\$298 per month for 48 months (total lease obligation of \$15,264/\$17,664/\$14,304). Down payment or equivalent trade of \$1,990/\$0/\$3,000 required plus first monthly payment and security deposit (\$375/\$425/\$350). Option to purchase at lease end for \$13,156 plus taxes. A.L.R. 7.2%. ✓✓MSRP for a new 1999 Odyssey LX (model RL185X). Freight and P.D.E. (\$850), taxes, licence and insurance are additional. Dealer may lease/sell for less. See your neighbourhood Ontario Honda dealer for details.

FOR A HONDA DEALER NEAR YOU, CALL 1-888-9-HONDA-9