

# Region living 'Nightmare on Eves St.'

Continued from pg. 1

legislation is scheduled to be passed.

If the legislation is passed in mid-December, 1998 final tax bills will not be issued until late December or January.

Interim tax bills for 1999 will also be delayed since they can't be sent out until the 1998 bills are in the can, said Halton Chair Joyce Savoline.

A Halton Hills Chamber of Commerce press release issued Thursday stated, "The biggest message we want to send to our municipalities, the region and the

province is that we are very concerned with the increase in taxes on local businesses, the tax inequities that exist and this needs to be resolved as soon as possible. The longer this is dragged out and the more changes that occur causes serious concern for business owners. Business may not be happy with their tax bill but the greatest apprehension is created when there is uncertainty of what next year's bill will be."

The chamber supported the region's request for a provincial exemption as it would eliminate confusion and uncertainty over next year's bill.

—By Irene Gentle, special

## Blvd. to get load limit signs

More reduced load limit signs will be put up on Winston Churchill Blvd. north of Hwy. 7 in response to a regional study of truck traffic done on the road.

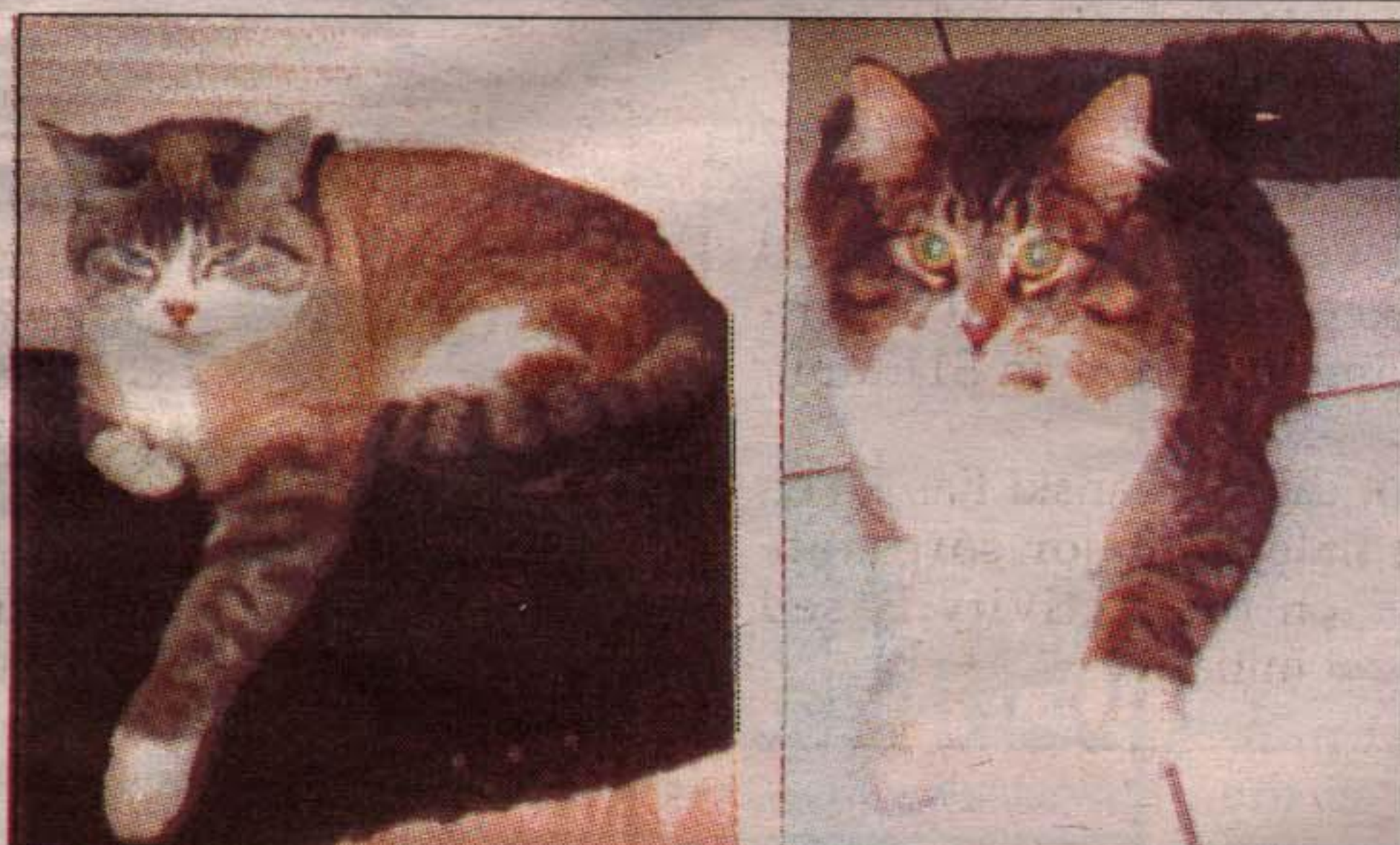
Ward 1/2 Regional Councillor Rick Bonnette said he requested the study be done after the rural councillors held a meeting with Norval residents back in April. One issue that was raised was that there was an increase in truck traffic on that road.

According to a region staff memo, monitoring revealed there wasn't an excessive amount of truck traffic on that stretch of road. The Region of Peel concurred.

Staff noted however that the reduced load limit (under five tonnes per axle) signage can be improved upon and will put up more signs, and improve the placement of existing load restriction signs.

Region staff will also request Halton and Peel police monitor truck traffic on Winston Churchill Blvd. north of Hwy 7 and south of 10 Sideroad where a truck prohibition is in place.

### LOST FAMILY CATS - CALL 877-0239



#### LOST

Misty (left) is female part tabby x with blue eyes. Grey/White face with grey/black ring tail. White chest/paws. Psycho (right) is a long hair tabby with white chest/paws with fluffy tail. Dark brown body. Family is distraught. Please call with any information. Generous reward.

877-0239 Geo. South

LOST FAMILY CATS - CALL 877-0239

LOST FAMILY CATS - CALL 877-0239

LOST FAMILY CATS - CALL 877-0239

### CORRECTION

We wish to draw your attention to the following in our current "THE RIGHT GIFTS" Flyer

Page 3-48-PC COMBO BIT KIT, 54-3621-6  
This is not a "Mastercraft" product as stated in the flyer.  
Page 28-BLACK & DECKER 6V CORDLESS DRILL, 54-2755-4

The illustration is incorrect. This drill comes with a keyed chuck.

75-PC DRILL BIT SET, 54-3675-8  
This is not a "Mastercraft" product as stated in the flyer.  
Page 31-MOTOMASTER LEISURE-VEHICLE BATTERIES, 27-1000X

Copy Reads: For 12V Snowmobiles, Motorcycles, Jet Skis, ATV.  
Should Read: For 6V or 12V Snowmobiles, Motorcycles, Jet Skis, ATV.

We wish to draw your attention to the following in our current "SHOP EARLY AND SAVE" Flyer

Page 1 OF WRAPPER - 14" SINGING/DANCING CHRISTMAS TREE, 51-7672-6  
This product does not include a transformer as stated in the flyer.

WE SINCERELY REGRET ANY INCONVENIENCE WE MAY HAVE CAUSED YOU  
**Canadian Tire Associate Store**

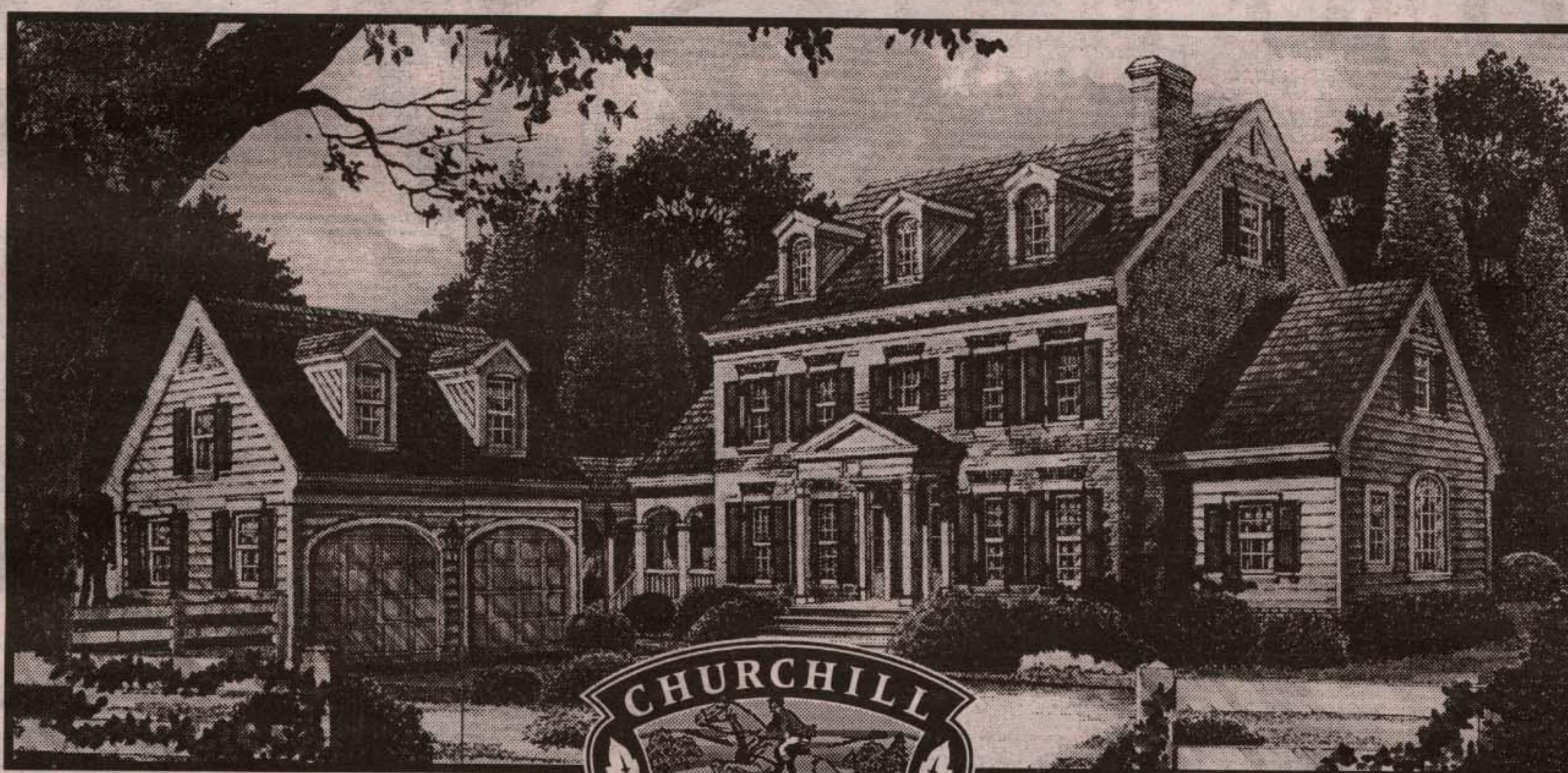
cnote d346/347-All Zones

**HAPPY 10TH BIRTHDAY TO A SPECIAL GIRL.**  
Love Mommy, Daddy & Hayden

Stick with your high blood pressure treatment, or you may be in for a nasty surprise.

Canadian Coalition for High Blood Pressure Prevention and Control  
http://www.ccbp.ca/ccp

## IT TAKES A MAGNIFICENT HOME TO COMMAND A TWO-ACRE LOT.



Artist's Concept

THE RICHMOND 2,665 Sq. Ft.

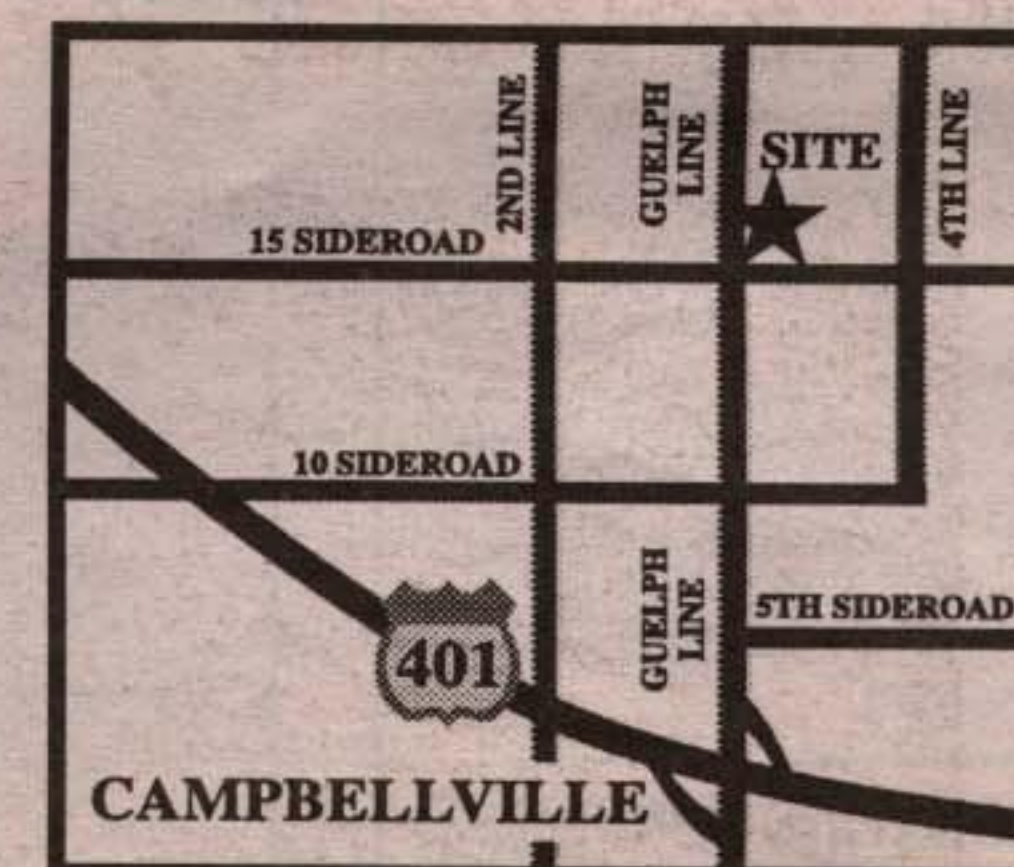


### CLASSIC COUNTRY ESTATE HOMES ON SPRAWLING COUNTRY LOTS

Spaciously designed and graciously appointed, with features ranging from private studies to great rooms with huge fireplaces and French doors. With 10 spectacular models to choose from, nestled just north of Campbellville and priced from \$349,000. Churchill Estates. For the home you want to spend the rest of your life in... out in the country and out of this world designs.

### Join Us For a Preview Opportunity

It's a chance to see your dream home, captured in one beautiful blueprint. In just a few weeks, Forest Homes is unveiling an ultra-exclusive collection of estate residences on sprawling 1/2 to 2 acre lots that recall the grand plantation homes of the South.



CALL TODAY FOR YOUR PRIORITY PREVIEW APPOINTMENT

[905] 878.7777

GARY THOMAS - REMAX  
BLUE SPRINGS REALTY, HALTON