

# NEW HOME BUYERS GUIDE

## Welcome to RiverWalk by Charleston Homes

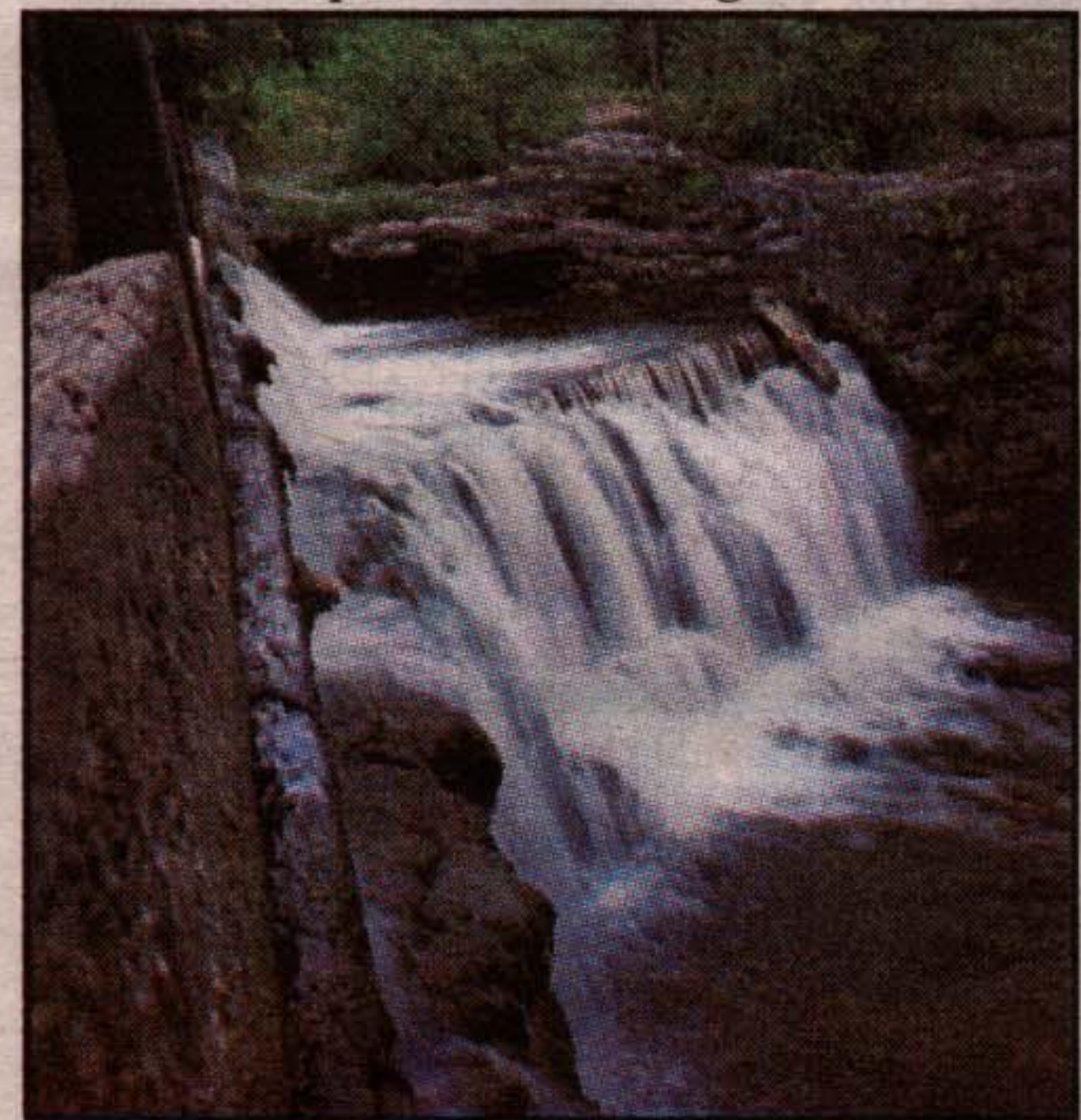
A residential community where tradition is more than a memory, where homes with a relaxing style and charming architectural details are nestled in a quaint village setting.

Perfectly located in the hamlet of Rockwood - designated an Ontario Heritage and Conservation District - Charleston Homes is putting their expertise in building custom homes into a collection of country manor homes.

Nestled between Guelph and Acton, Rockwood is blessed with an abundance of natural resources - soft rolling hills, quarries, forests and the Eramosa River.

The town boasts a rich history that can still be seen in the shops along Main Street. Today, as it was centuries ago, Rockwood is home and haven to those who appreciate the natural beauty and tranquility of Upcountry living.

Charleston Homes pays tribute to Rockwood's past with a thoughtful and sen-



a waterfall at Rockwood Conservation Area, a short stroll away.

sitive new community of 52 country manor homes.

President of Charleston Homes, Charlie Kuiken, believes in giving each home individual character and

giving each customer personal service so their home feels perfect for them.

"The whole home buying process should be enjoyed by the customer. They should feel like their home is being custom built just for them," he says.

That is the hands-on approach and attention to detail that has given Charleston Homes a prestigious reputation in the Guelph and Georgetown area. With a background in custom built homes, Kuiken has been involved in the building industry for more than 20 years and his staff have a combined 100 years experience.

RiverWalk is really a dream location, with soaring cedars and a gentle stream right in your own backyard. The homes back on to a trail that meanders along the Eramosa River and into the town of Rockwood. You'll appreciate the natural beauty and the small town atmosphere that lets you get to know your neighbors.

And, you can enjoy the charm of small town life with all the amenities of a city just around the corner. Just a 15 minute drive from Hwy. 401, Rockwood is minutes from Guelph and boasts recreation activities such as golf, cross-country skiing and swimming nearby.

The lofted bungalow homes of RiverWalk include many quality-crafted, custom details that add to their beauty and charm. Exteriors feature reclaimed brick,



scalloped shingles and a careful architectural style that preserves the colonial, historic look of the town. You'll also find an interlock brick driveway, walkway and

patio with a fully landscaped yard.

Traditional style continues throughout the interiors with colonial baseboards, trim and doors and other features you'd expect only in a custom home.

RiverWalk offers six models to choose from ranging in size from 1,425 to 1,630 sq. ft., prices start at \$173,000.

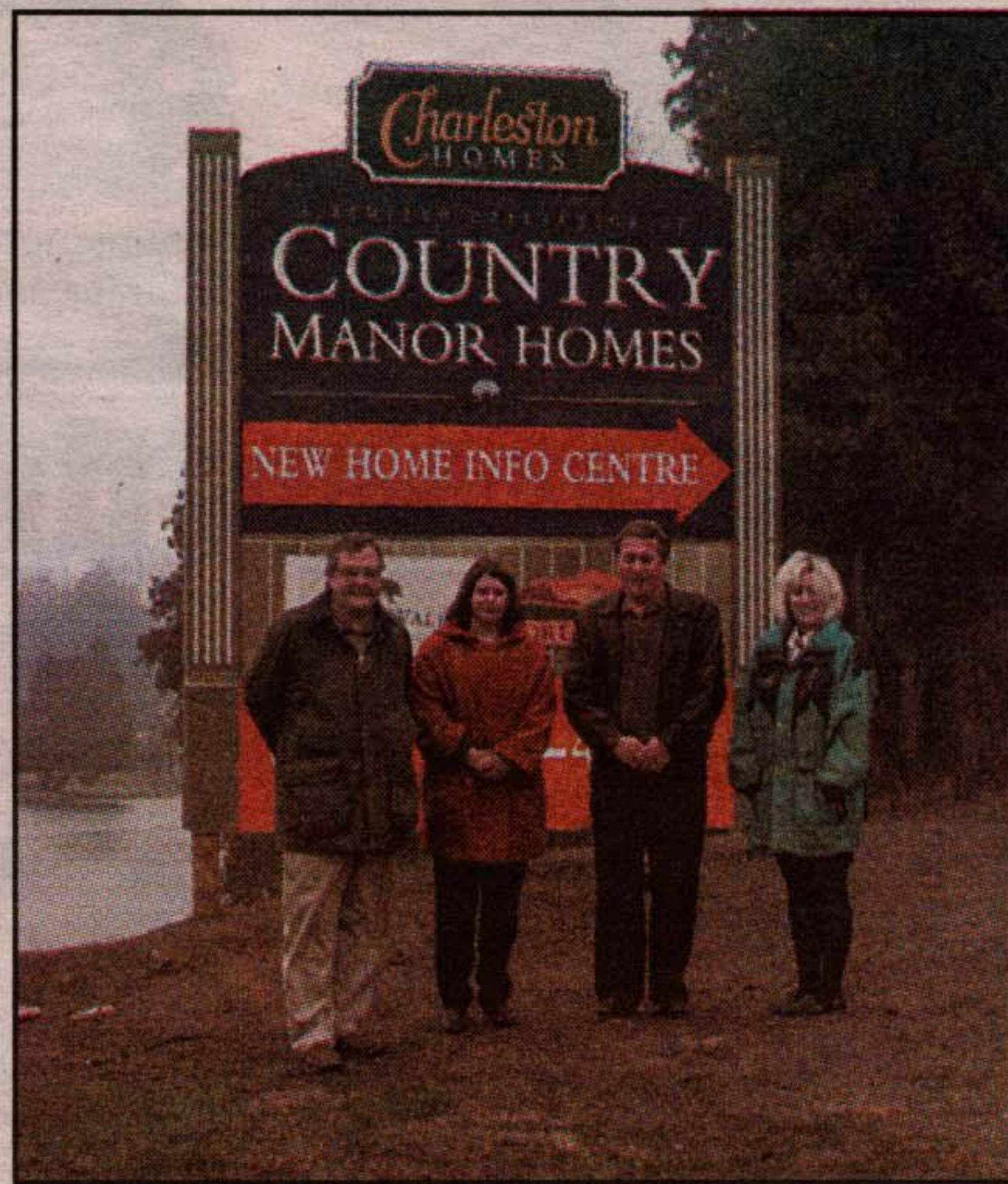
The Old Mill, a 1,610 sq. ft. model, is impressive with an open design and soaring vaulted ceilings. An exquisite covered porch welcomes you into the home where you are greeted by a gleaming ceramic tile foyer. Continue into the Great Room with its vaulted ceiling and sliding doors that lead onto the back patio.

A cleverly designed kitchen features ample storage and counter space as well as a breakfast bar that is open to the Great Room. The master suite with vaulted ceiling and three piece ensuite is also on the main floor. You'll appreciate thoughtful features such as the his and hers closets with mirrored sliding doors. The laundry and powder room complete the main floor.

The second floor loft can be

designed for your choice of use. Its large 505 sq. ft. space could be a second bedroom, hobby room, or study; this is a home that changes to fit your lifestyle.

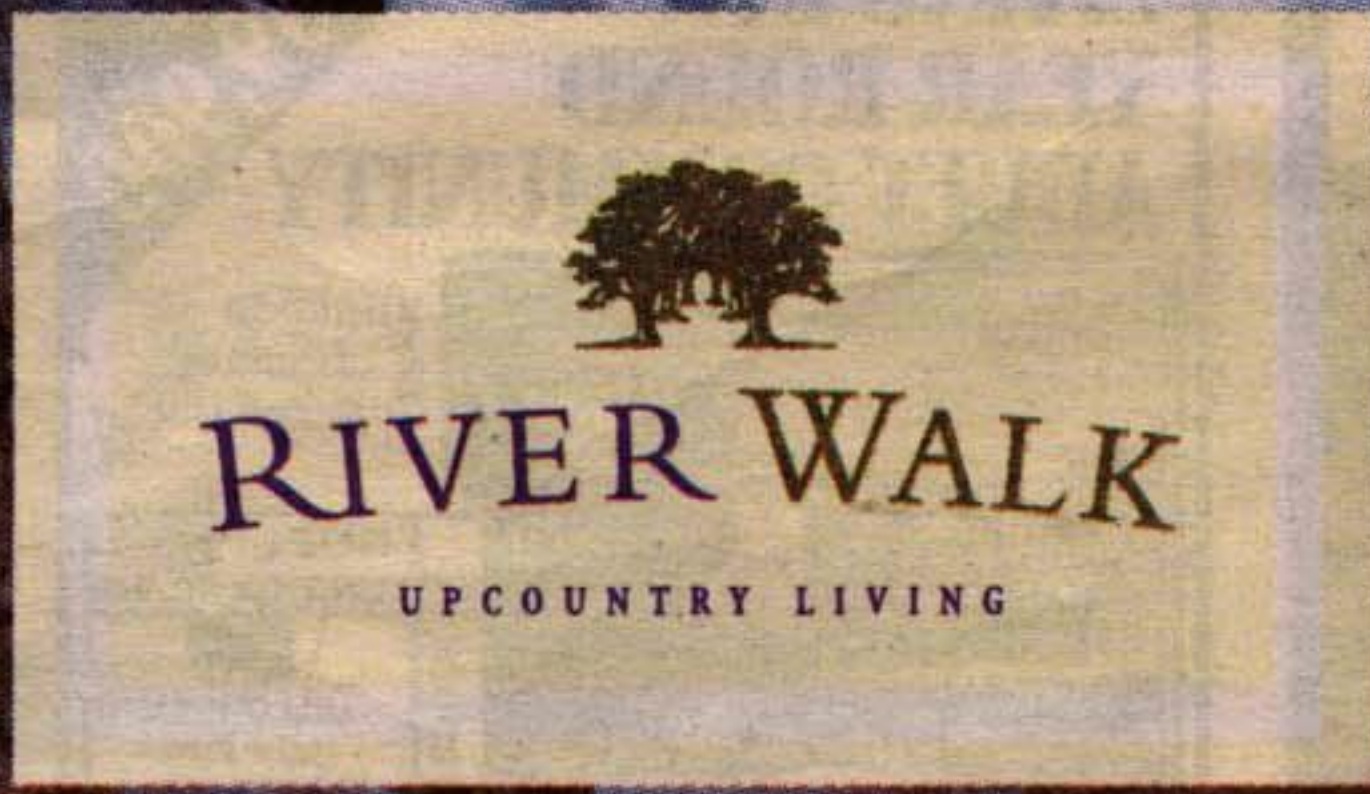
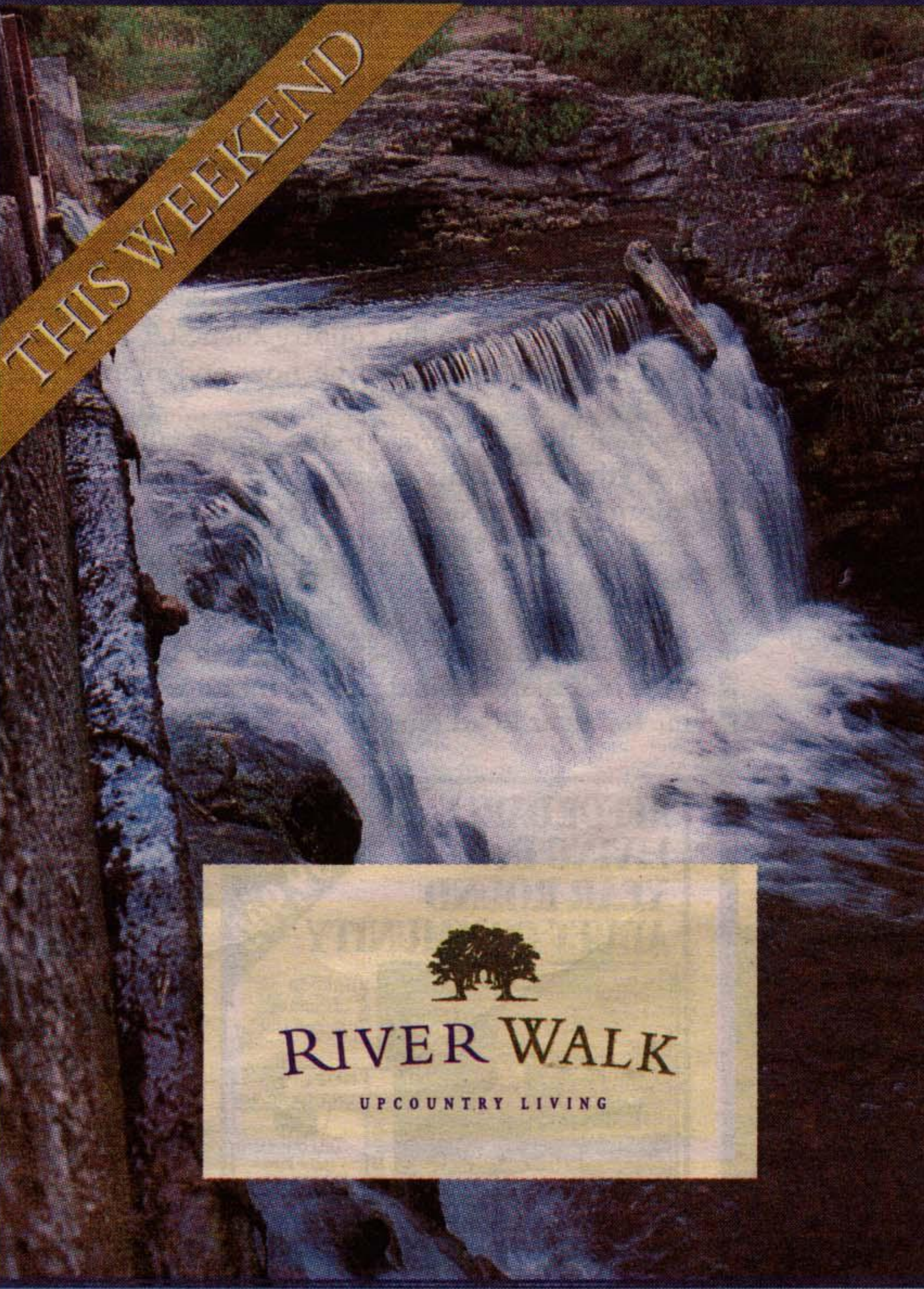
Visit the homes at RiverWalk, you'll appreciate all that they have to offer. To get to RiverWalk take Hwy. 25 north from Milton, continue on Hwy. 7 to Rockwood. The Charleston Homes sales office is the large stone building on the right, just before the river. Call Dick Marvin or Deborah Gibson at (519) 856-4389 for more information.



Above: (from left) Dick Marvin, sales and marketing director; Nicole Kuiken, sales assistant; Charlie Kuiken, Charleston Homes president and; Deborah Gibson, sales associate.

# GRAND OPENING

THIS WEEKEND



CHARLESTON HOMES INVITES YOU TO

## A Limited Collection of COUNTRY MANOR HOMES IN A PERFECTLY NATURAL SETTING

Custom-crafted quality • Spacious, light-filled, wide designs

• "Flex-space" layouts - lofts, main level master suites, vaulted ceilings • Walk-outs, private ravine setting

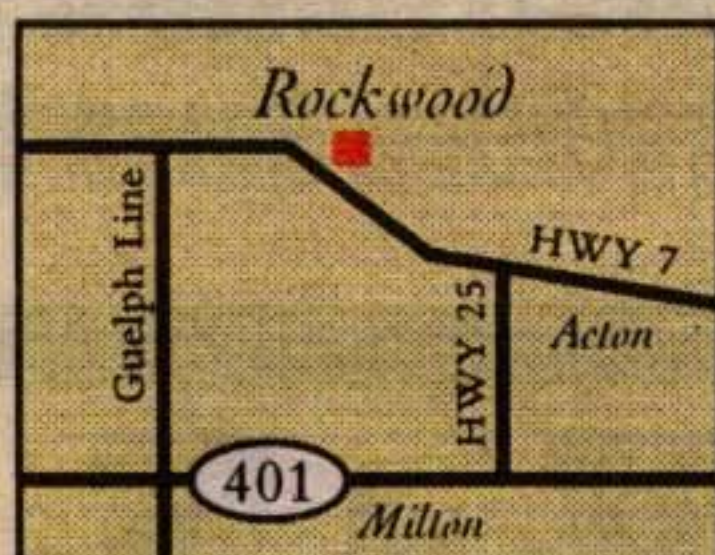
• Charming heritage community

FROM

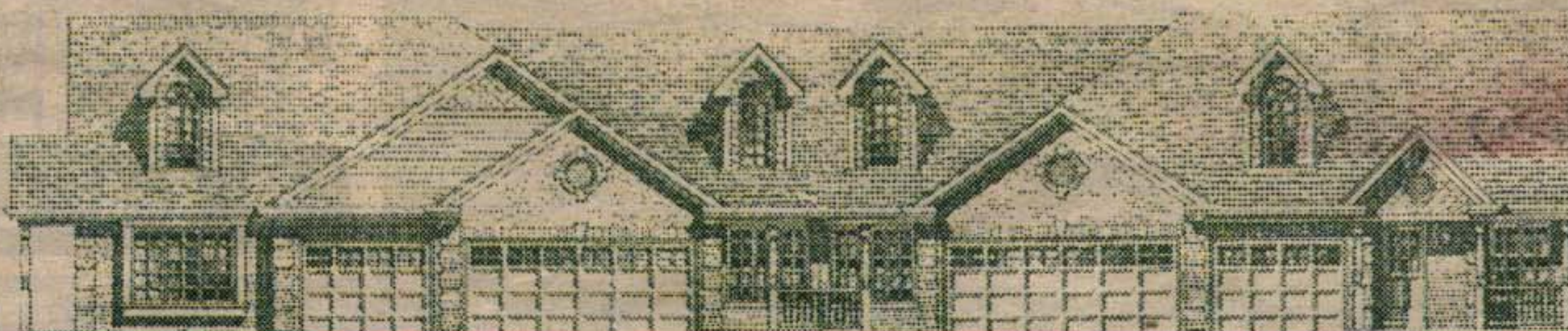
# \$172,900

For more information call:

## 519-856-4389



Sales Centre Hours: Sat. & Sun 11 a.m. - 5 p.m. Tues. - Thurs. 11a.m. - 8 p.m.



On the banks of the Eramosa River

Prices and specifications are subject to change without notice. © C.H.E. \*These figures include taxes and fees. Based on 5% down payment. 1 year warranty. All other details provided.