



# RE/MAX

BLUE SPRINGS REALTY  
(HALTON) CORP.

ACTON OFFICE (519) 853-2086  
 GEORGETOWN OFFICE (905) 877-5211  
 MILTON OFFICE (905) 878-7777  
 ROCKWOOD OFFICE (519) 856-4348

## #1 in Halton Hills

### OUR FEATURES THIS WEEK!!



**MIKE ADAMS\***  
Sales Rep.



**PAT AKERS\***  
Sales Rep.



**SANDRA ARNOLD\***  
Sales Rep.



**LARRY BARNSTAPLE\***  
Sales Rep.



**JOHN BARTLETT\***  
Sales Rep.



**DAVE BRAIDA\***  
Sales Rep.



**RENÉE CHABASSOL\***  
Sales Rep.



**GORD DAWE\*\***  
Assoc. Broker



**MICHELE DAWE\***  
Sales Rep.



**YVAN DESJARDINS\***  
Sales Rep.



**MAL DODGE\***  
Sales Rep.



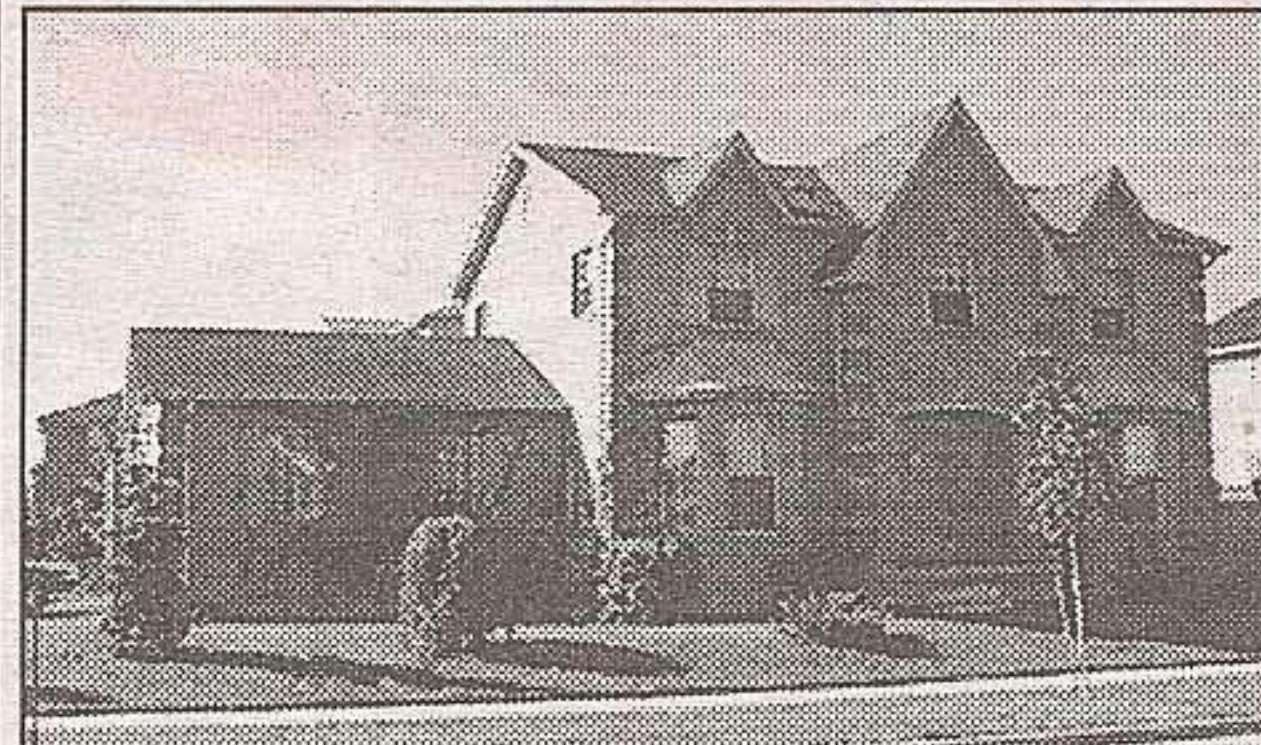
**JANIS GAREL\***  
Sales Rep.



**PETER HRKAC\***  
Sales Rep.



**YVONNE HRKAC\***  
Sales Rep.



#### GEORGETOWN SOUTH BEAUTY

4 bdrm. Country Glen home. Approx. 2250 sq. ft. with some hardwood floors, sunken family room with gas FP, kitchen has bleached oak cabinets, main floor laundry. 2 bedrooms in basement.

**RYCHARD McKEOWN\*** Sales Rep.

**877-5211**

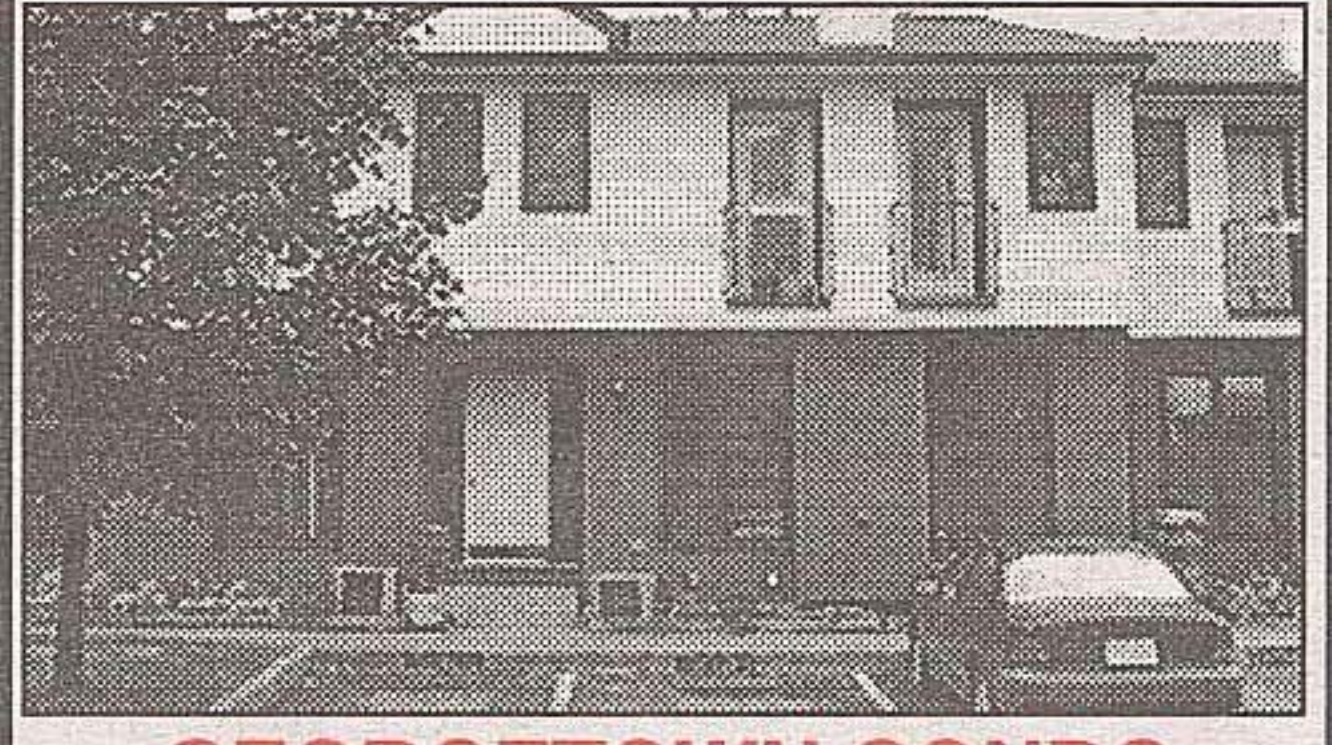


#### 5 MINUTE WALK TO GO TRAIN

**\$181,900.**

**DOUG MEAL\*** Sales Rep.

**877-5211**



#### GEORGETOWN CONDO

WOW! Only \$122,900. for this gorgeous 2 bedroom unit with balconies, fireplace, finished rec. room. This unit has lots of space. Shop and compare. Please call to view.

**KATHY MONCKTON\*** Sales Rep.

**877-5211**



#### EXECUTIVE COUNTRY HOME

on 2.39 wooded acres. 3 bedroom bungalow with five walkouts, ensuite spa in master bedroom, security system, lawn sprinkler system, fireplace in great room, built-in cocktail and entertainment centre, oak kitchen, breakfast area with skylights, family room with skylights, and full unfinished basement with separate outside entrance. This is a gorgeous home in an extremely attractive setting in one of the Town of Erin's estate home communities. See it all at [www.boboliver.com](http://www.boboliver.com).

**BOB OLIVER\*** Sales Rep.

**877-5211**

[www.boboliver.com](http://www.boboliver.com)



#### HALTON HILLS - 11 AC. SOUTH OF GEORGETOWN

Minutes to Hwy 401. 1406 ft. frontage. 4 large bedrooms. Family room with wood stove. Ceramic & parquet floors. 2 wells. Steel shed: 36' x 24' \_ 200 amp. 3 plum, 3 apple trees. Parking for many vehicles. Market garden soil.

**MAUREEN PLUCINSKY\*** Sales Rep.

**1-800-834-5516**

(905) 877-5211 (905) 874-3051



#### DON'T MISS THIS ONE

Fantastic older 4 bedroom, 2 bathroom home. Hardwood floors throughout. The home is highlighted by original woodwork throughout. 50 year shingles on house, '97' new roof on garage, central air, extra deep lot, detached oversized garage & extra long driveway. Separate basement entrance to the finished basement. HURRY ON THIS ONE! PRICED UNDER \$200,000.

**DONNA RAE\*** Sales Rep.

**877-5211**



#### COUNTRY CHARACTER & CHARM

Located in the hamlet of Everton this 2900 sq. ft. 8 years old log home has much to offer. Located on dead end street and property backs onto the Eramosa River. Mature treed setting. Spacious bright room with unique features everywhere. Call Wayne\* to view this special home.

**WAYNE SAUNDERS\*** Sales Rep.

**(519) 856-4348**

**1-888-833-1945**



#### LOVELY HOME AND GARDEN

Well kept 1400 sq. ft. bungalow on private treed lot with gorgeous garden. 3+1 bedrooms, 2 baths, country kitchen, finished walkout basement, cosy rec room, 2 fireplaces and deck. Asking \$189,900. Please Call.

**HEATHER SCOTLAND\*\*** Associate Broker

**(519) 853-2086**



#### FABULOUS FAMILY HOME!!!

All the room you need right here in this immaculate, updated 4 bedroomed home located on mature lot in the "sought after" area of Lakeview. Gorgeous updated oak kitchen, hardwood, finished rec room with gas fireplace, central vac, central air & heated garage, +++++. ONLY \$195,900.

**JENNIE STANHOPE\*** Sales Rep.

**(519) 856-4348**

**1-888-833-1945**



#### GEORGETOWN - ONCE IN A LIFETIME TO OWN THIS ...

100 acres of unspoiled wilderness just 2 minutes from town, 15 mins. to 401 or 30 minutes to airport. Build your dream home. Complete privacy. Call Tony\* or Carol\* for details.

**CAROL WALRAVEN\*** Sales Rep.

**877-5211**



#### BUILDING LOT

3.60 acres on Highway #7 and Wellington County Rd. #28. Suitable for a single family residence and agricultural uses, home occupation, bed & breakfast, hobby farm and home industry.

**TONY WALRAVEN\*** Sales Rep.

**877-5211**



#### BUNGALOW - \$189,900

- Legal 2 bedroom apartment in basement
- Double car tandem garage
- Private yard

**KATHLEEN WALSH\*** Sales Rep.

**877-5211**

\* Sales Representative \*\* Associate Broker \*\*\* Broker/Owner



**NORINNE KILGOUR\***  
Sales Rep.



**DAVE KRAUSE\***  
Sales Rep.



**BILL McKEOWN\*\***  
Assoc. Broker



**JAN McKEOWN\***  
Sales Rep.