



RE/MAX

BLUE SPRINGS REALTY
(HALTON) CORP.

ACTON OFFICE (519) 853-2086
 GEORGETOWN OFFICE (905) 877-5211
 MILTON OFFICE (905) 878-7777
 ROCKWOOD OFFICE (519) 856-4348

#1 in Halton Hills

OUR FEATURES THIS WEEK!!



MIKE ADAMS*
Sales Rep.



PAT AKERS*
Sales Rep.



SANDRA ARNOLD*
Sales Rep.



LARRY BARNSTAPLE*
Sales Rep.



JOHN BARTLETT*
Sales Rep.



DAVE BRAIDA*
Sales Rep.



RENÉE CHABASSOL*
Sales Rep.



GORD DAWE**
Assoc. Broker



MICHELE DAWE*
Sales Rep.



YVAN DESJARDINS*
Sales Rep.



MAL DODGE*
Sales Rep.



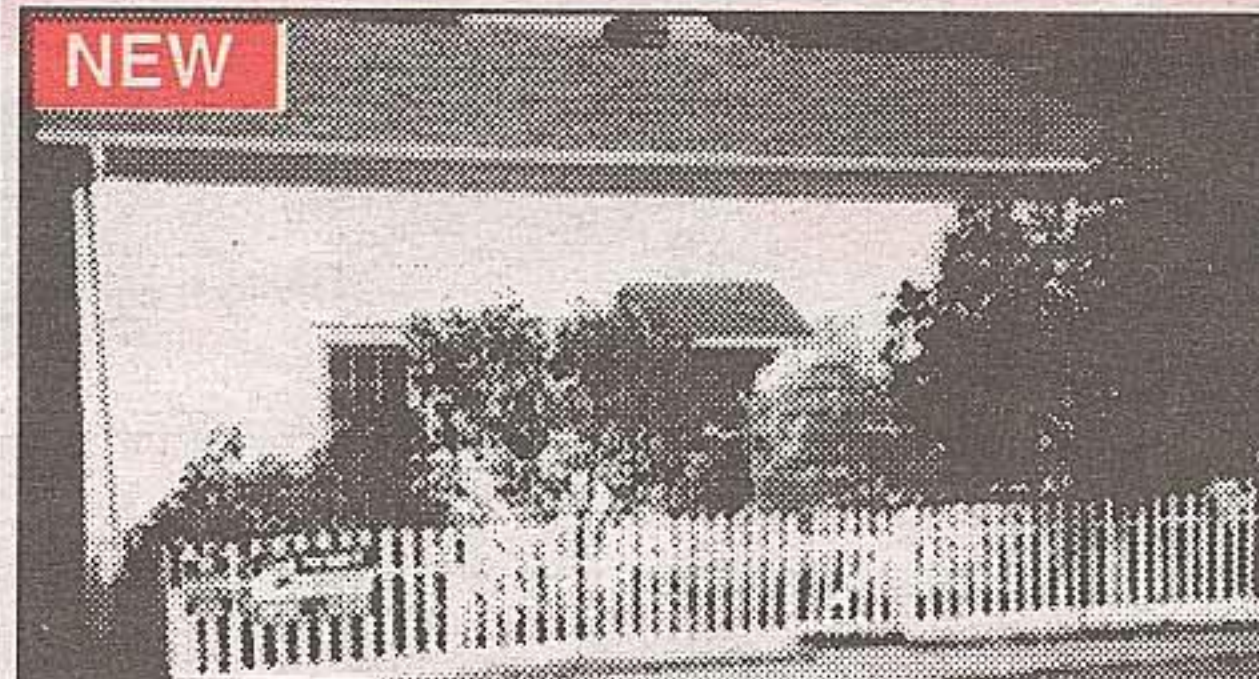
JANIS GAREL*
Sales Rep.



PETER HRKAC*
Sales Rep.



YVONNE HRKAC*
Sales Rep.



NEW

QUAINT GLEN WILLIAMS

Setting right in the heart of the artisan sector. Century old home with country charm. Huge kitchen & large main floor rooms. Original pine floors & trim. Closed-in porch/mud room off kitchen. \$139,900.

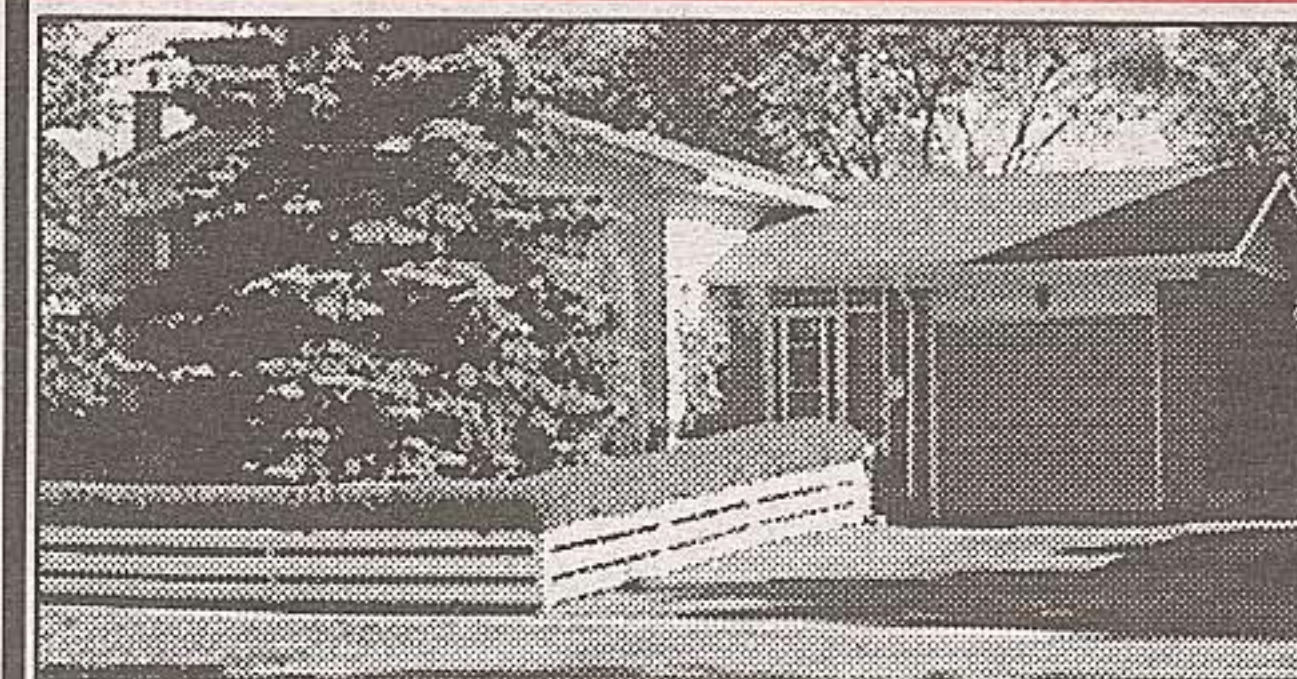
CAROL WALRAVEN* Sales Rep.
877-5211



BUILDING LOT

3.60 acres on Highway #7 and Wellington County Rd. #28. Suitable for a single family residence and agricultural uses, home occupation, bed & breakfast, hobby farm and home industry.

TONY WALRAVEN* Sales Rep.
877-5211



BUNGALOW - \$194,000

- Hardwood floors
- Finished basement
- Private yard
- Walking distance to shopping, schools, etc.

KATHLEEN WALSH* Sales Rep.
877-5211



3/4 ACRE QUAINT VILLAGE LOT \$49,900

This 169 x 192 foot building lot would be ideal for a walkout basement overlooking the babbling brook - surrounded by mature trees and evergreens & just a stone's throw away from the river. Bring your plans or use ours - we can recommend a great builder too!! Please call Leigh Whiting* at 1-888-833-1945. RMAC97-200

LEIGH WHITING* Sales Rep.
853-2086
1-888-833-1945



NEW

\$122,900

Spacious townhome, walking distance to GO. Features include woodburning fireplace, central air, parquet flooring, broadloom and family room. Parking space is included. Both adorable and affordable Call Carol* to view.

CAROL WOOD* Sales Rep.
877-5211

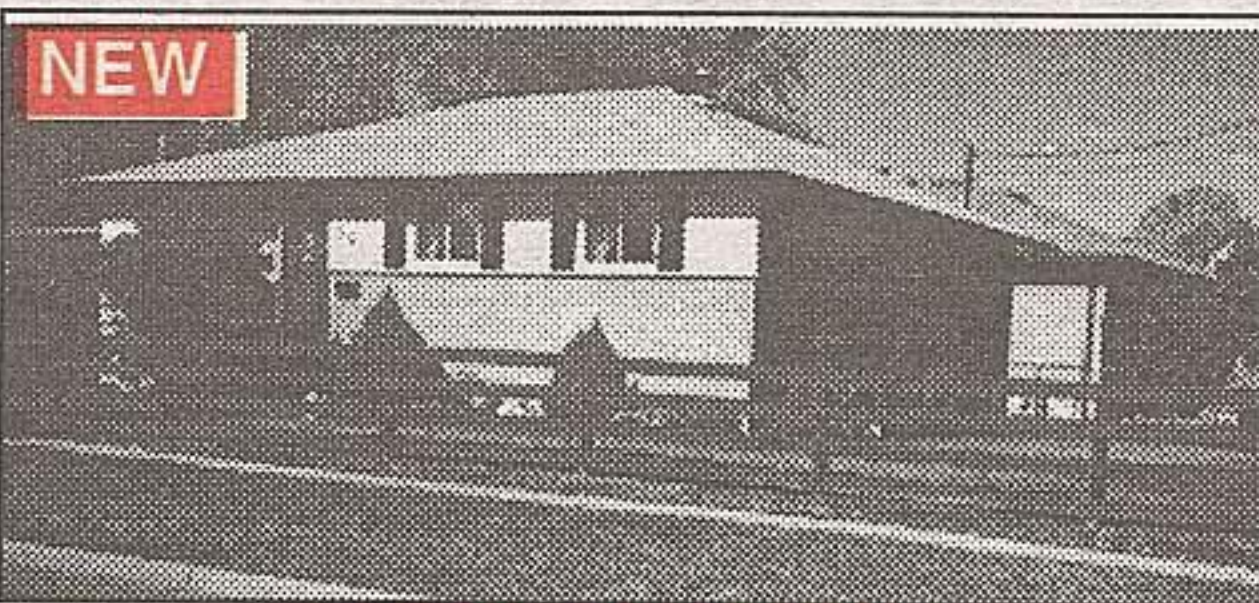
10 Yr. **6.24%** O.A.C.

This could be your last mortgage!!

What is your lending institution offering you?
Refinancing, Purchases

Please let me negotiate your next institutional mortgage at no cost to you.

BOB WOODS
Mortgage Specialist
877-5211

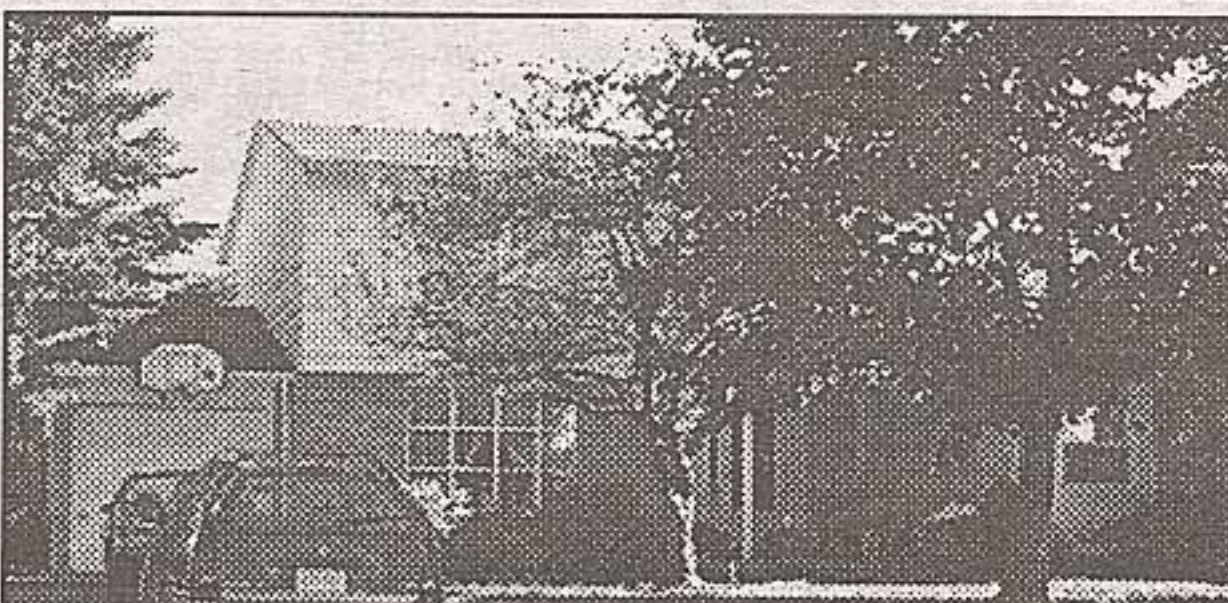


NEW

NEAT AS A PIN!!

Meticulous gardens - completely fenced yard - large deck - loads of upgrades (windows, roof, eaves & soffits, kitchen cabinets) - finished lower level, perfect for entertaining - listed at \$185,500. - Call Marilyn* for more details. RM98-146

MARILYN WORRALL* Sales Rep.
853-2086
1-888-833-1945



GREAT - 4 BEDROOM!! \$179,900

GREAT - Super huge lot with mature trees.
GREAT - Location, walking distance to Fairy Lake, park, school, shopping
GREAT - Place to raise a family, large principal rooms.

MIKE ADAMS* Sales Rep.
877-5211



PERFECT FOR COMMUTERS

Almost 1700 sq. ft. home located near 9th Line & Derry Rd. Bleached oak cupboards, w/o from kitchen to rear yard, gas fireplace in family room, 4 pc. ensuite bath, 2 pc. on main floor. Neutral decor. For private viewing call Pat Akers* 1-888-833-1945 today.

PAT AKERS* Sales Rep.
853-2086
1-888-833-1945



CAPE COD IN PARADISE!

\$369,000. 12.75 secluded acres just north of Hwy. #7. Approx. 3600 sq. ft. 4+1 bedroom, beautiful & bright country kit., sunken fam. rm. with wood stove & walk-out to spacious deck, main fl. office or den, entertainers dining rm., fin. walkout basement to screen porch, gazebo & inground pool, 3 car gar. with loft, winding drive, pond, hardwood forest. Won't last, call Larry Barnstaple* 905-877-5211 or 519-833-9578. BUR-98

LARRY BARNSTAPLE* Sales Rep.
877-5211



\$99,000

10.6 acres north of town, east of Hwy. #25, half bush, half open, level rectangular shaped lot.

JOHN BARTLETT* Sales Rep.
853-2086
1-888-833-1945



CLASSIC TURN OF THE CENTURY

This charming century home is situated on 4 country acre, close to town. Features 4 bedrooms, large principle rooms and a 4 car garage. Call Dave* or Janis* for all the exciting details. Offered at \$279,900. 98-122

DAVE BRAIDA* Sales Rep.
853-2086
1-888-833-1945



NORINNE KILGOUR*
Sales Rep.



DAVE KRAUSE*
Sales Rep.



BILL McKEOWN**
Assoc. Broker



JAN McKEOWN*
Sales Rep.