

Johnson Associates

HALTON LTD., REALTOR

WE'RE #1 PERFORMANCE

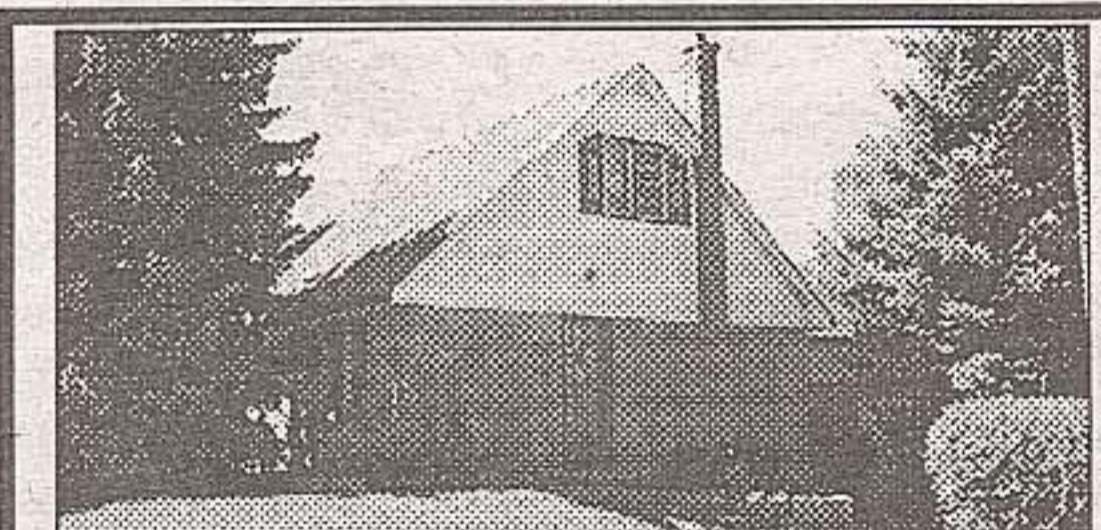
247 Guelph Street Georgetown

AS ADVERTISED ON <http://www.johnsonassociates.com>

Erin/Hillsburgh
(519) 833-9714

Toronto/Mississauga
(905) 874-3040

Oakville/Burlington
(905) 875-2143



UPGRADED, IMMACULATE
Three bedroom with garage. Close to everything! **Carol McMurray*** 98-459-30



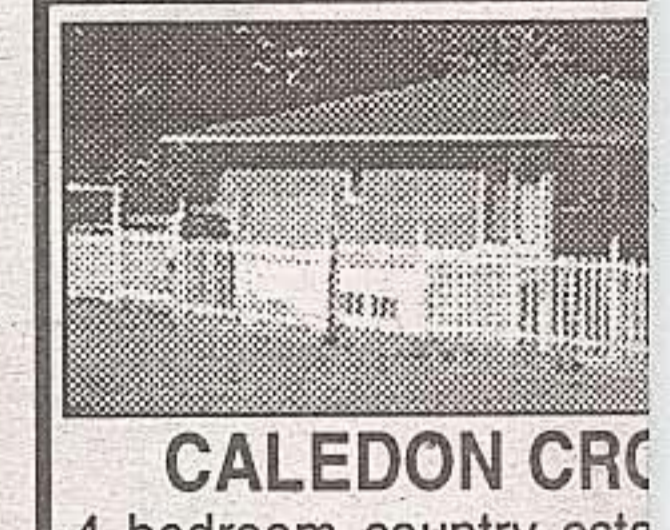
VICTORIAN BEAUTY
Situated on 93 acres in Halton Hills. Home is renovated beautifully with stunning kitchen and family room. Bams and paddocks. Ideal horse farm. Call **Kathy Ellis*** 98-271-31



LAND HO!!
5 Ac. property located on the Sixth Line of Erin. There's a well and a small cabin with hydro. Excellent opportunity for \$89,000. Call **Rick Curry*** 98-449-VL



GUELPH STRIP COMMERCIAL
96 feet of frontage where the action is! Great exposure for your business! Newly listed at \$299,900. Discuss with **Bill Ellis*** 98-430-30



CALEDON CRO
4 bedroom country estate beautifully landscaped, in-tty system and much more! **Stewart Barclay***



LANDSCAPED EXECUTIVE LOT
Upgraded well maintained 4 bedroom with full finished basement with extra washroom done in pine, entertainment area. All the bells & whistles. \$319,900. **Martha Summers*** 98-327-30



WOODED WONDERLAND
3 bedroom bungalow with double garage on pretty treed lot minutes to Erin village. Large country kitchen, sunken living room with fireplace, finished rec room with wat bar and more! \$233,500. **Martha Summers*** 98-450-91



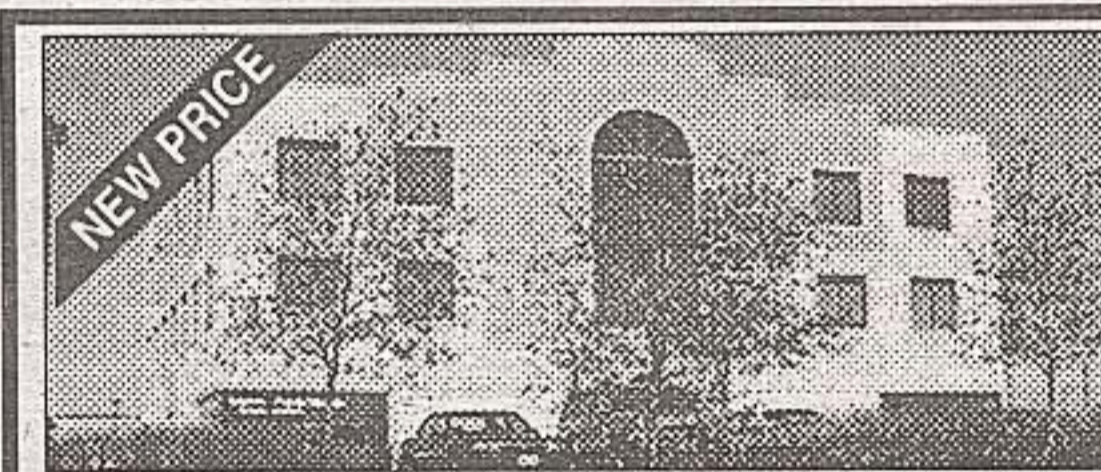
IT'S ALL HERE
Quiet new subdivision on west edge of Georgetown, breathe the country air in this charming 3 bedroom home. 3 baths, formal living & dining rooms, gorgeous oak kitchen with ceramics. Now priced at \$230,000. Call **Iris Irwin*** 98-314-30



SAVE \$10,000 - NOW \$289,900
3180 sq. ft. of luxurious living. From approach (Bowmanite Walkway) to departure (extra large pie shaped garden) and in between. Numerous upgrades. Fernbrook built 4 bdms. 2 car garage, main floor family room with fireplace. Lots of other pleasant surprises. **Mary* or Tony*** 98-349-30



BETTER THAN TI
Charming bungalow on the water to village. Open concept, vaulted ceiling, walkout to deck over a 10+. \$179,900. **Martha Summers***



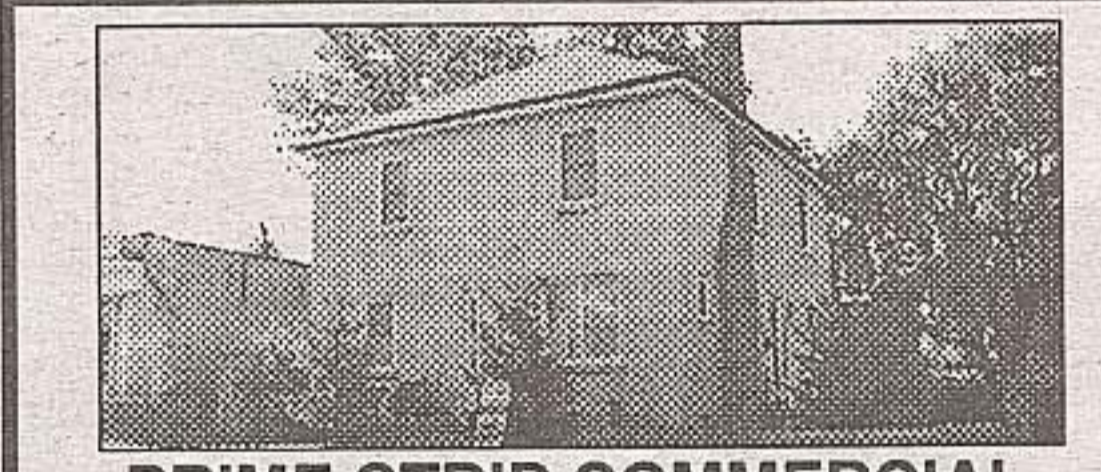
WHY RUN YOUR BUSINESS FROM HOME?
Grab this 681 sq. ft. of prime office space in medical bldg, suitable for a doctor or other type of business. 3 rooms, 2 pc. bath & bright reception area. Move in & take advantage of the "high traffic" in the area. Call **Michelle Mont*** for a personal inspection. 98-403-30



A REMARKABLE PROPERTY
A spacious Credit Valley stone home privately situated overlooking a large spring fed pond, century stone gate house, bank barn and two garages. Superb property with views, water and mature trees all 50 minutes from downtown Toronto. \$850,000. **Martha Summers*** 98-363-31



PRIME RETAIL SPACE
1,225 sq. ft. with 4 entrances and 2 washrooms. Lots of parking. Leasing at \$15.00 per foot TMI included. Call **Bill Ellis*** 98-139-30



PRIME STRIP COMMERCIAL
C2 zoning on this corner lot for high visibility in uptown location. Newly offered at \$299,000. Get details from **Bill Ellis*** 98-427-30



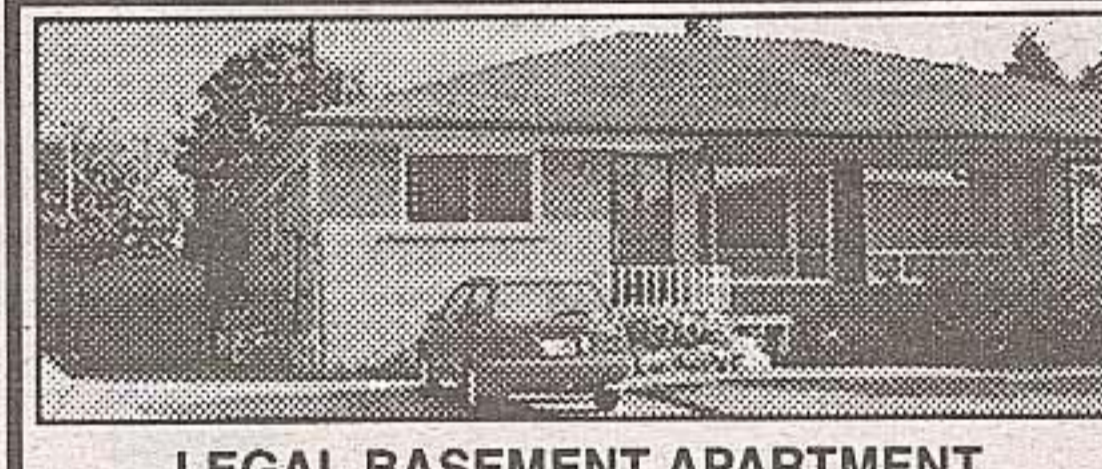
CHARMING C
Minutes north of Georgetown, gorgeous acres with spring fed pond, low with walkout basement, possible in-law suite potential. Listing. **Carol McMurray***



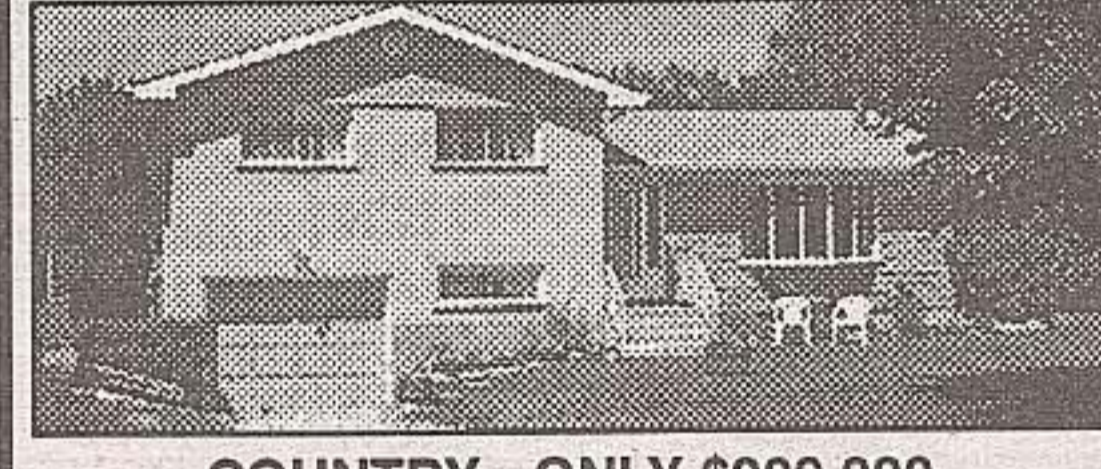
STONE COTTAGE C. 1835
Well maintained cosy 3 bedroom country retreat set well back on 86 acres with pond and bush. A charming residence aglow with the patina of age. \$339,000. **Tom Comery*** 98-156-91



HAVE IT ALL!
Fabulous 2800 sq. ft. home in Georgetown South. Cathedral ceiling family room with fireplace, romantic fireplace in the master bedroom! Beautiful extras of ceramics, French doors, wonderful decor throughout, guest room with semi-ensuite, walk-in pantry in the country kitchen. Drop dead gorgeous. Call **Glenda Hughes*** 98-408-30



LEGAL BASEMENT APARTMENT
Lovely 3 bedroom semi-detached home with hardwood flooring, central air conditioning, lovely landscaping, handy storage shed. All fairly new windows except living room. Legal 1 bedroom basement apartment. For an exclusive appointment call **Jim Akers**** at 877-5165. 98-448-30



COUNTRY - ONLY \$209,000
Located in Erin township, this well maintained home is sitting on just over 1 acre of land, backing onto 100 acre farm. Detached shed 16' x 20' is insulated and serviced with water and hydro. This well priced home is waiting for you. Call **Donna Robbins*** 98-421-91



3 ACRES, HO DEVELOPMENTAL
Over 600 ft. of frontage on Tr 1.5 storey home presently rent skirts of Georgetown this property and the potential for dividing in **John Hill***



Super bungalow with a totally walkout basement. Ceramics, jacuzzi, 2 solariums - beautiful design and construction. \$399,000. Call **Kathy Ellis*** 98-274-95



SO YOU WANT HEAVEN IN "THE GLEN"
Look no further. Almost one acre of your very own park with Credit River frontage. Custom 3 bedroom home with loft, family room has woodstove, maple flooring & broadloom. Awesome views from the living room. \$299,000. A "must see". Call **Iris Irwin*** 98-285-30



MOVE IN & RELAX
Sweet 3 bedroom bungalow has most of the work already done. Upgraded bath with jacuzzi. Most windows replaced. Large rec room with gas fireplace. On quiet street close to schools. Call **Dianne** and Doug** Penrice** 98-405-30



HAMLET OF GLEN WILLIAMS
Non-conforming 2 bedroom basement apartment on quiet cul-de-sac, comfortable 3 bedroom raised bungalow nestled in woodland. Easy commute, pleasant setting, private drive, fireplace charm, deck, mature foliage, large trees, city water. Country living but close to all amenities. Call **Jim Akers*** 98-418-30



FANTASTIC OPP
To own your own business bungalow approximately successful pizza take-out one in town! Immaculate - complete details.

Two Left Out of Seven 1 Acre Lots in Caledon, \$110,000/ EA plus a 1 acre lot at \$129,000. Call **Martha Summers*** for more details 97-347&348
NICELY TREED - 1.5 ACRE lot in Caledon abutting prestigious Orpen Lake estates. Survey, driveway

roughed-in and lot levies paid. \$89,000. Call **Rick Curry*** for further details. 98-151-VL
NEW 1.35 AC. - Building lot in the Hamlet of Everton. First there was four. Wish there was more. Now there is one. Soon there'll be none. Asking \$62,900. **Rick Curry*** has all the details. 98-223-VL

FIRST LINE available - Exceptional 68 acres, super private, excellent pond site. Well treed lot. Great value. \$119,000. Call **Kathy Ellis*** 98-390-VL
2.2 ACRES - Industrial - \$199,000. Call **Martha Summers*** 98-467-VL

RENTAL PROPERTIES
OFFICE Space available in modern building with handicap access, air conditioning and plenty of free parking. From 400 sq. ft. to 4,500 sq. ft. Call **Rod* or Dinah*** (98-243,244,245,259)



Jim Akers**



Stewart Barclay*



Tom Comery*



Rick Curry*



Kathleen Dobbie*



Elizabeth Doell*



Lynn Drewry*



Kathy Ellis*



Bill Ellis**



Mary Maan*



Tony Maan*



Carol McMurray*



Michelle Mont*



Wilf Moore*



Sandra Nairn*



Lois Patrick*



Brenda Payton*



Dianne Penrice**