

Real Estate Digest

Wednesday, Sept. 30, 1998 16 Pages

AN ADVERTISING SUPPLEMENT TO THE INDEPENDENT FREE PRESS
SERVING GEORGETOWN, ACTON, ERIN, HILLSBURGH, ROCKWOOD AND SURROUNDING AREAS
873-0301 - Publisher Ken Nugent

Bill McKeown
Associate Broker
877-5211



RE/MAX BLUE SPRINGS REALTY (Halton) CORP.



NEW LISTING

\$259,900



LYNN DREWRY*
*Sales Rep.
(905)
877-5165

**WONDERFUL BUNGALOW IN THE PARK
WAIT UNTIL YOU SEE INSIDE!**

Spacious 3+1 bdrm + 2 bathrooms
MF Family and Sun Room
Upgraded Roof and Furnace '95
Lower level self-contained unit (no kit)
Lrg bdrm, rec rm & 4 pc bath
Great lot 70 x 132 cedars



Johnson Associates
HALTON LTD., REALTOR



CATHY BUCKRELL*
*Sales Rep.
(905)
874-3086

IN THE HEART OF BELFOUNTAIN

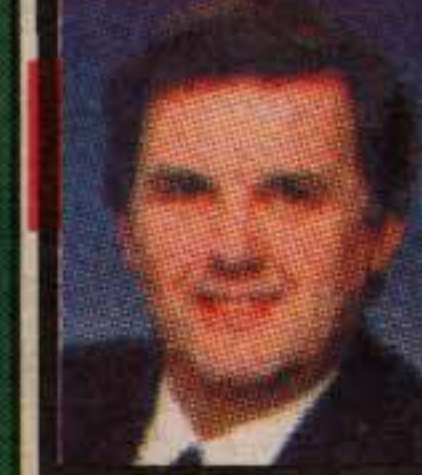
Live & work at home. Perfect location for aspiring entrepreneur. Historic 5 bedroom res "Circa" 1860. Possible "B & B". Separate commercial building on 2 unique acres, beautifully landscaped with large pond & stream. Endless potential. \$595,000.



CHELTENHAM



\$184,500



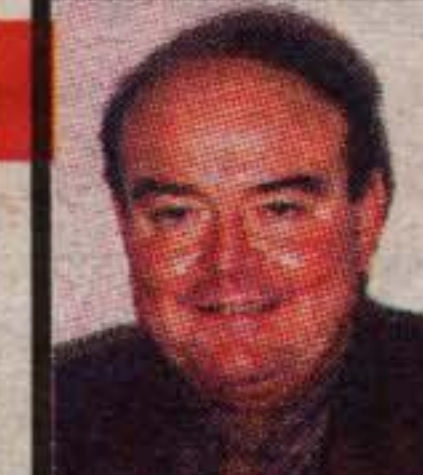
MIKE ADAMS*
*Sales Rep.
(905)
877-5211

GREAT NEIGHBOURHOOD

Close to schools, park, all amenities, very bright spacious home, great size kitchen, dining room, great size backyard. Treed. A must see. Finished rec room with woodstove, very large. Great Acton location for kids.



BLUE SPRINGS REALTY (Halton) CORP.



JOHN BARTLETT*
*Sales Rep.
(519)
853-2086

CHARLESTON MODEL HOME

Town of Erin. 3/4 acre landscaped lot. Open concept bungalow, hardwood floors in great room, dining room, family room, kitchen and morning room. Main floor den/office. Oversize garage. Fabulous home with loads of upgrades, Walkout lower level. \$279,900.



BLUE SPRINGS REALTY (Halton) CORP.



\$277,500



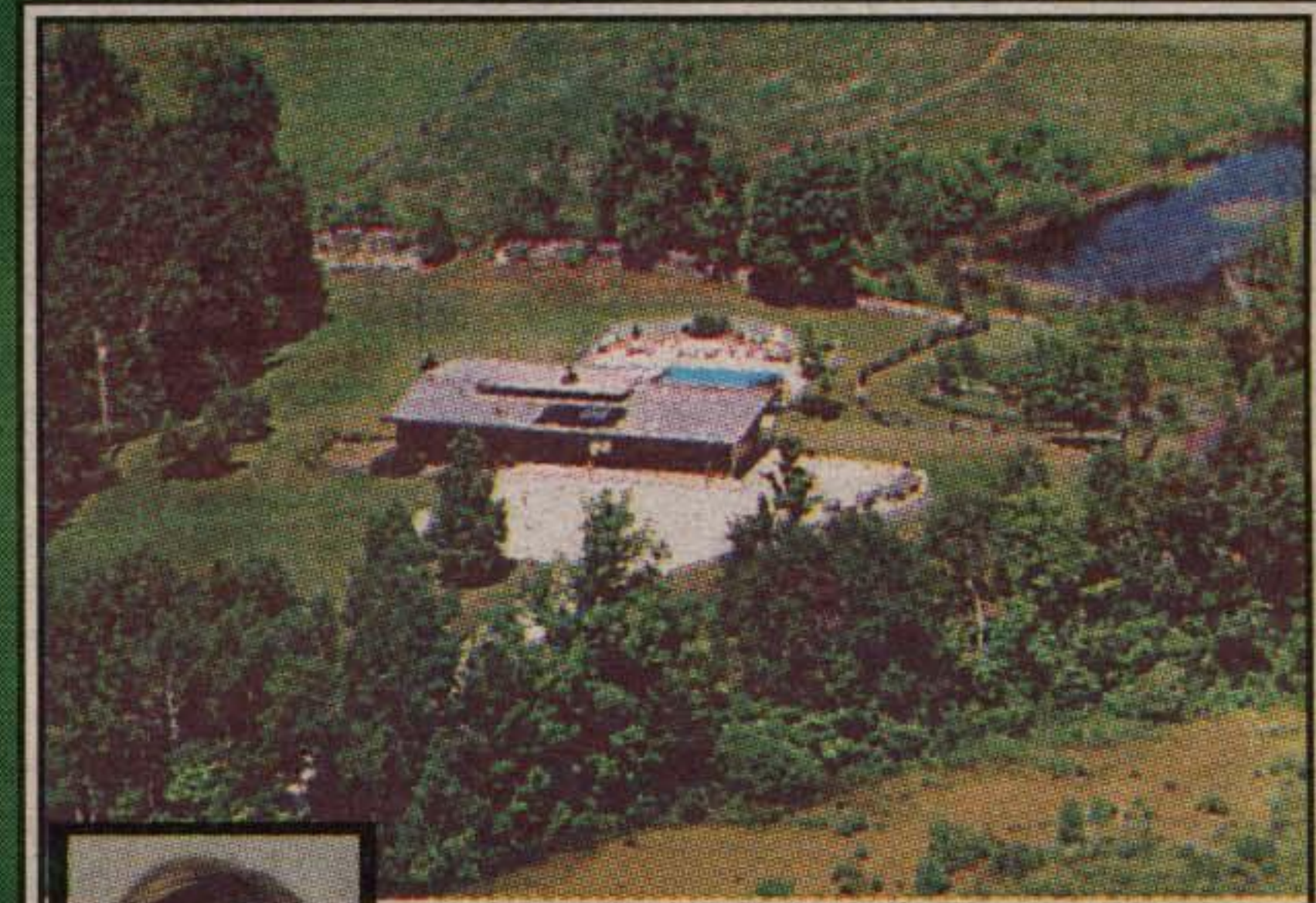
ANNA MARY LOSTRITTO*
*Sales Rep.
(905)
877-5165

HURRY!! GOING .. GOING ...

Chic and Charming!! Brick/stone styling . . . Better than new . . . Ready to move in!! Double Garage w/ent. Open Concept! 4 BR's, master w/ens and W.I.C., 3 WR's, Many upgrades . . . CAC, ceramics, DR & FR w/dbl sided FP and wood flrs., French drs, Fin Office in bsmt, and more . . . Call me TODAY!!



HALTON LTD., REALTOR



MARTHA SUMMERS*
*Sales Rep.
(905)
877-5165

THE TOTAL PACKAGE FOR COUNTRY LIVING

The private driveway leads up to this well maintained country property that has it all. A spacious 3 bedroom bungalow with a full walkout at the lower level, walking out to the inground pool and overlooking the ponds and the Erin countryside. Vaulted beamed ceilings, lots of light welcome you to this home. A small barn with stalls complete this country picture. \$319,000. Martha Summers*.



Johnson Associates
HALTON LTD., REALTOR



This friendly community is the *perfect* place to live!



- 5 min.'s from the Guelph Lakes Conservation area & the new Guelph Lakes Golf course
- Just behind the Victor Davis Rec Centre
- Easy access to Hwy 7 & 24
- ONLY 6 LOTS LEFT !

Choose from many **flexible** floor plans

Single family Homes from

\$129,800

up to 1850 Sq Feet



FREE CENTRAL AIR

WITH YOUR EASTWOOD HOLLOW FULLY-DETACHED HOME WHEN YOU BUY BEFORE AUGUST 31ST. \$4000 EARLY CLOSING INCENTIVE



519.824.3445



The **Windflower IV**
\$155,800



The **Brookwood IV**
\$145,900

2 Models to View
4 Starview Crescent, Guelph
Saturday & Sunday
12:00 noon to 5pm
Tuesday & Thursdays
4:00pm to 8:00pm
Other times by appt.