

Say You Saw It In . . . The Independent & Free Press Real Estate Digest

RE/MAX

BLUE SPRINGS REALTY (Halton) CORP.

360 Guelph Street, Georgetown

TORONTO (905) 874-3051

GEORGETOWN (905) 877-5211

ERIN (519) 833-7117



DAVE KRAUSE*
Sales Rep.

ATTENTION HOME BUYERS:

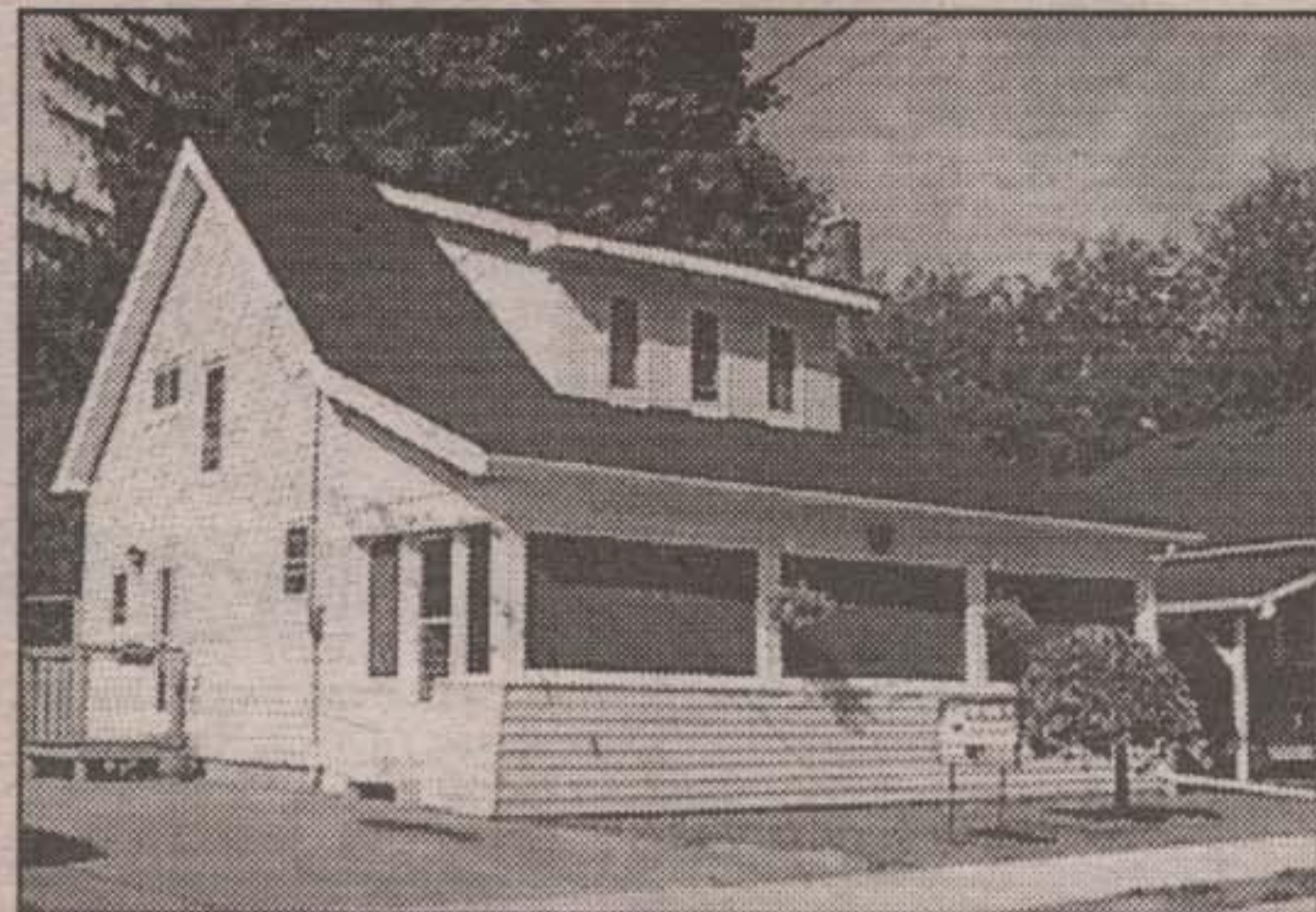
There has been no better time to purchase your FIRST home or move up to your Dream Home. I would like to be your realtor and assist you in achieving your dream home.

Please call **Dave Krause*** for a

FREE Market Evaluation of Your Property 877-5211

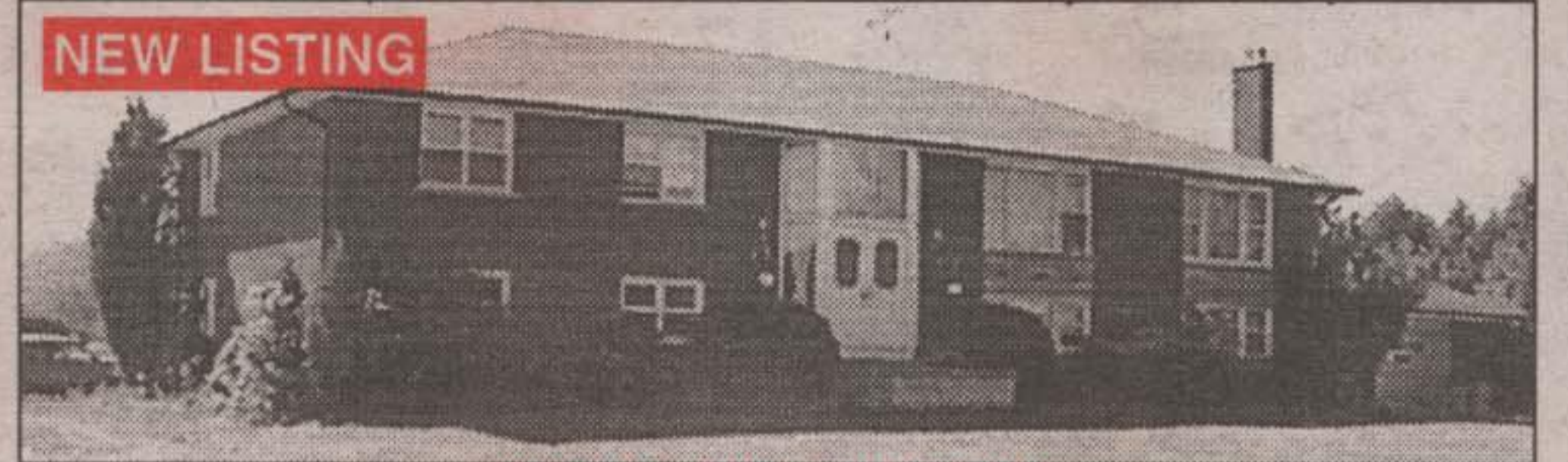
Not intended to solicit properties already listed.

Check our my Captain Financial Rates on page 2.



CHARACTER & CHARM...

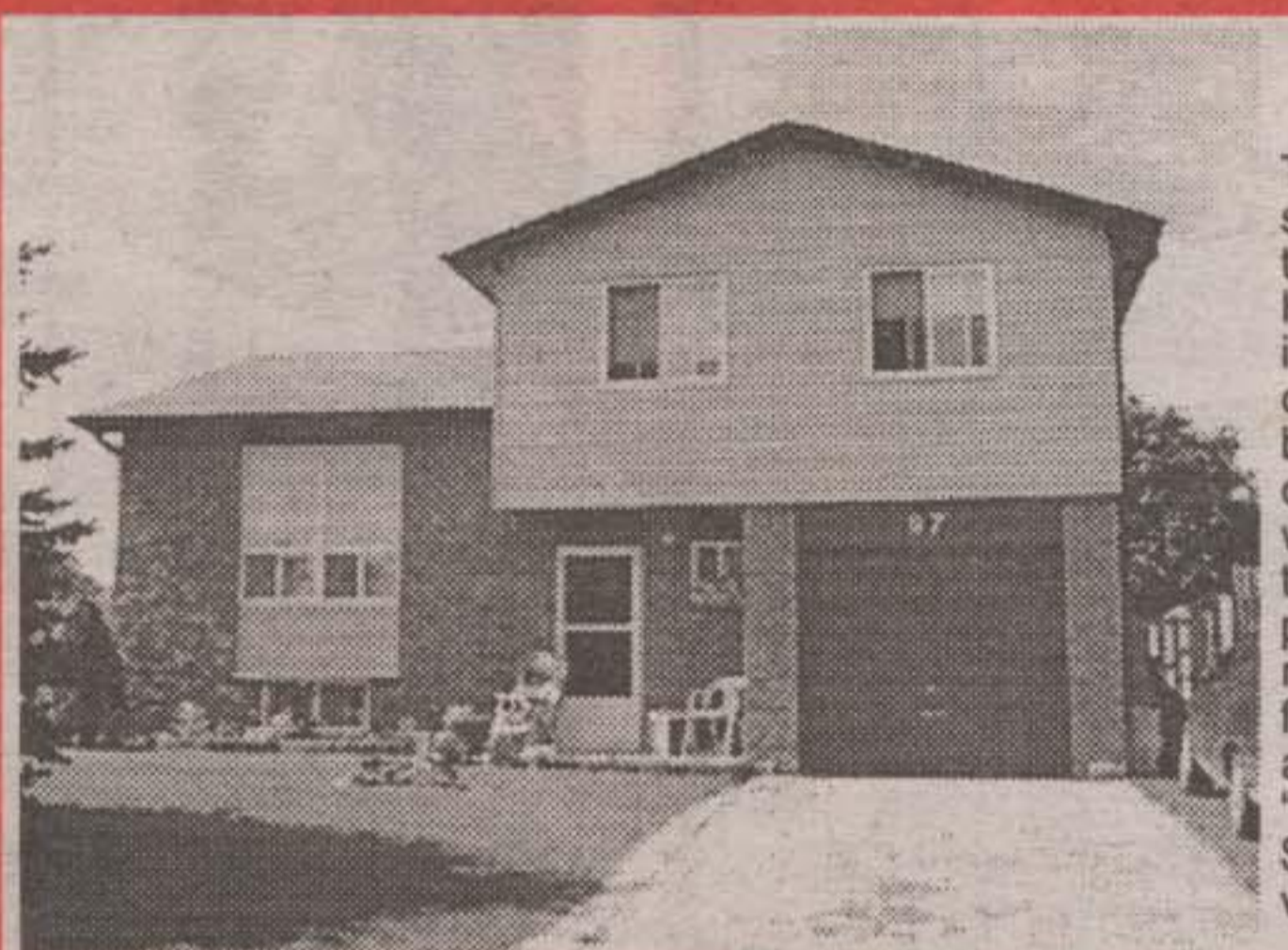
ooze from this 3 bdrm., two storey home located in Georgetown. Lots of wood, high baseboards, original trim, screened in front porch/verandah & gas FP in the living room makes this home a cozy hide-away. Features of this home include most new windows, new pine kitchen 2 years old, most new drywall, mid-efficiency gas furnace and big backyard with a good size shed. Priced at \$184,900. Call Dave Krause* to view.



NEW LISTING

10 ACRE HOBBY FARM

Tired of living in a big house on a small lot with no privacy & space. Why not live in a big house on a 10 acre parcel of land. This property is south of Georgetown and consists of the following: 1) Approximately 2,000 sq. ft. all brick raised bungalow with a walkout basement that could accommodate an extended family & a double car garage. This home is finished top to bottom. 2) 10 stall horse barn with paddocks & a 1/3 mile track. 3) 800 ampple trees with a cold storage set up. 4) Driveshed for the equipment. Priced at \$429,000. Call Dave Krause* to view.



GORGEOUS SIDESPLIT WITH LARGE LOT

This three bedroom brick & vinyl sidesplit is finished from top to bottom & located in the quaint Village of Hillsburgh. Features of this home includes: large principal rooms, lots of pine wainscoting, some new broadloom, freshly decorated, kitchen overlooks family room that has a FP with a wood burning insert & walkout to a large fenced backyard which is professionally landscaped. The rec room is also finished. The driveway & flower beds are all interlock stone & are beautiful. This home shows "Pride of Ownership" and is priced at \$179,900. Call Dave Krause* to view.



GEORGETOWN SOUTH

Beautiful 2550 sq. ft. 4 bedroom home located across the street from a park. Features of this home include ceramics in hall & kitchen. Hardwood floor in bedroom. "Greenhouse" eating area in kitchen with French patio doors leading to a fully fenced backyard. FR adjacent to kit. with a gas FP. Bedrooms are a good size with a 5 piece ensuite including a jacuzzi tub & separate shower stall. Basement has been roughed in with a 3 pc. washroom. C/A. This home is a pleasure to show. Priced at \$274,900. Call Dave Krause* to view.



NEW PRICE

WELCOME TO ROCKWOOD

This gorgeous 2 storey home in the quaint Village of Rockwood is situated in an established neighbourhood. Features include eat-in kitchen, walkout from D/R to a large fenced backyard. Beautiful family room with a gas stove & skylight. Three good size bedrooms. Main washroom has a skylight. Access to double car garage from this home. CVAC. Close to Conservation park. Listed for ONLY \$194,900. Call Dave Krause* to view.



TAKE A LOOK AT THIS ONE

Gorgeous all brick 3 bedroom bungalow located in the Village of Ballinafad on a good size lot. Features include hardwood floors in LR, hall & bedrooms, main washroom completely renovated in 1997. 2 new chimneys. Alum. soffits, eaves & fascia in 1997. All new windows, good size eat-in kitchen with W/O to deck. New garage door & remote, C/A, roughed in CVAC etc. Priced at \$219,900. Call Dave Krause* to view.

FREE HOMEBUYERS INFORMATION SEMINAR

TUESDAY, SEPTEMBER 29, 1998
7:00 P.M.

CHECK US OUT!!! www.georgetownrealestate.net

Call YVAN or KAREN for more information 905-877-5211

RE/MAX BLUE SPRINGS REALTY (HALTON) CORP.

RE/MAX BLUE SPRINGS REALTY (Halton) CORP.

360 Guelph Street, Georgetown

NORINNE KILGOUR
Sales Representative



877-5211
Erin (519) 833-7117



LOVELY COUNTRY BUNGALOW - \$189,900

4 bedrooms. Large living room with woodstove. Walkout from kitchen to 12'x15' deck. Bright 2 bedroom inlaw suite with large living room and built-in oven and counter top. Huge yard in area of large pond.



CHARMING CENTURY HOME \$149,000

You must see this home in Orangeville. It is very tastefully decorated and has a main floor family room with woodstove. Most of the house has wide plank floors. Nice yard with lots of old shade trees.



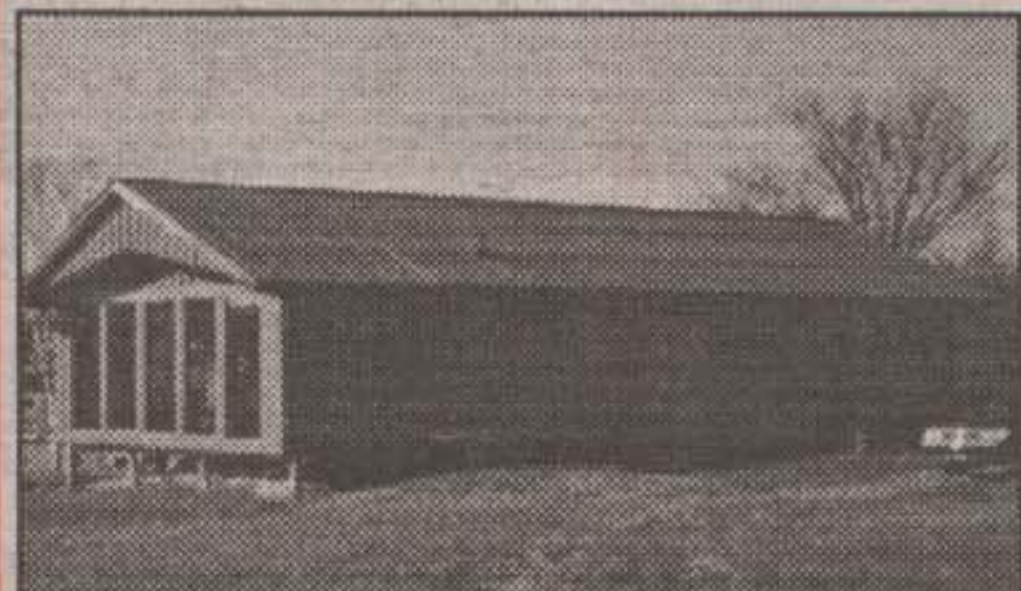
Carol Walraven*
Sales Rep.



NEW

COUNTRY RETREAT \$299,900

Lovely Tudor style home in forest setting boasts larger principal rooms, floor-to-ceiling stone fireplace, 4 bedrooms, in-law suite complete with separate entrance & much more.



BEAUTIFUL 8 YEAR OLD LOG HOME

On the water. Five bedrooms and 2 baths. Open concept kitchen/living area, 12' x 24' sunroom, 12' x 60' deck overlooking lake. All on approx. 1-1/2 acres. Asking \$149,000. Call Tony* or Carol* for details.

BUILDING LOTS

BUILDING LOT - 8 acres just outside of Georgetown. Fantastic sandy loam. Great for gardening, 344 feet on 22nd Sideroad, just west of Limehouse. Lots of room to roam. Build your dream house here, not many parcels like this one. Spring fed stream at back of property. \$98,300.

BUILDING LOT - 3.60 acres on Highway #7 and Wellington County Rd. #28. Suitable for a single family residence and agricultural uses, home occupation, bed & breakfast, hobby farm and home industry. \$129,000.



Tony Walraven*
Sales Rep.

RE/MAX Blue Springs Realty (Halton) Corp. 877-5211



HOBBY FARM OR WORK FROM HOME

Lovely 15 acre property with 2 ponds in the Belwood Lake area. Includes 50' x 30' 2 storey barn and garage/workshop 35' x 40'. The raised bungalow has completely finished basement and self-contained in-law suite joined by gazebo style solarium. All this for only \$249,000. Call now!



\$219,000

INVESTMENT OPPORTUNITY

Well maintained 4 plex and 2 detached garages with parking in Hillsburgh, zoned commercial, good return. Listed at \$219,000.



REDUCED

WORKSHOP 60' X 32' - \$256,900

Lovely property, over 1 acre on hill surrounded by tall trees. Brick home, sparkling wood floors, propane fireplace in ground level family room. Lots of room for home office. Wonderful shop with 3 bays and main shop area heated with oil furnace.

BEAUTIFUL 25 ACRES

Very private for your "Dream Home" and lots of trees. Minutes from Hillsburgh. Listed at \$109,000.