

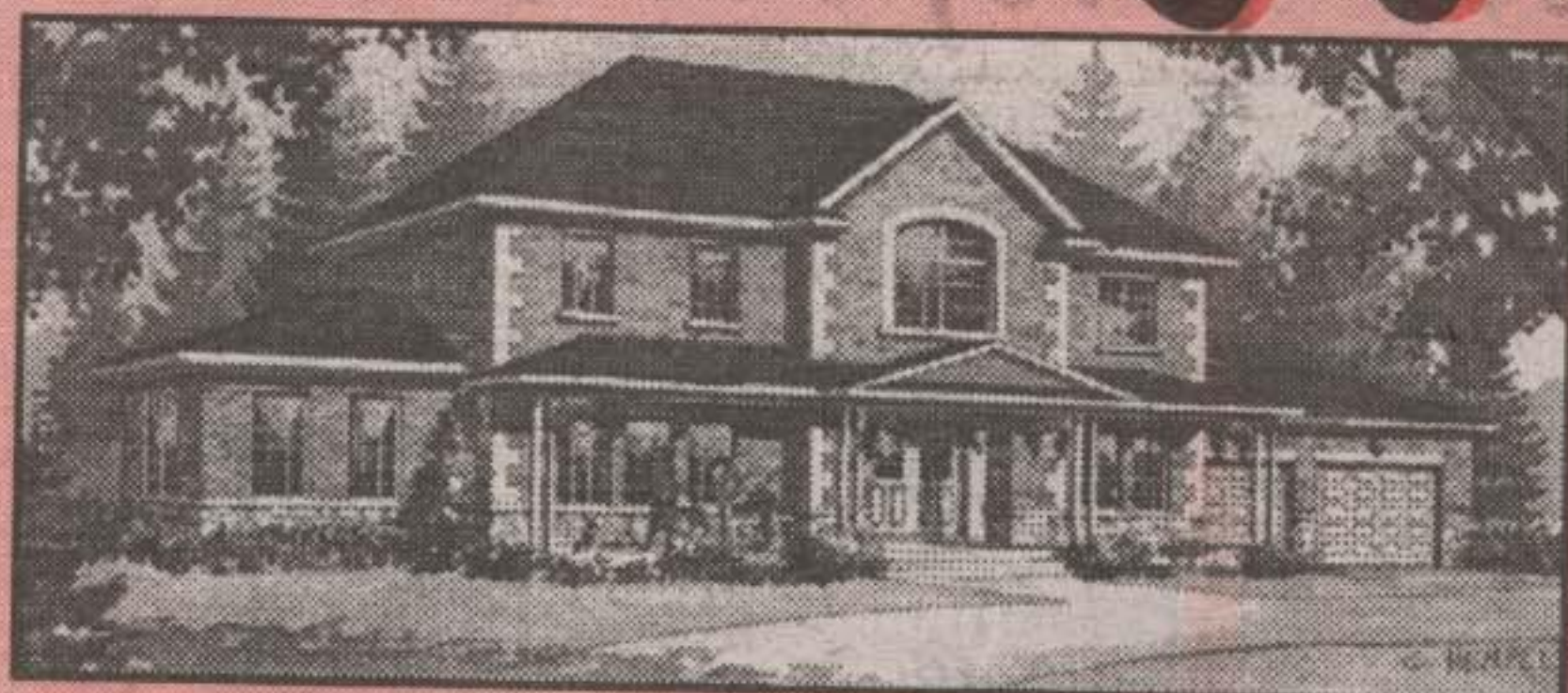


PETER HRKAC  
SALES REP.

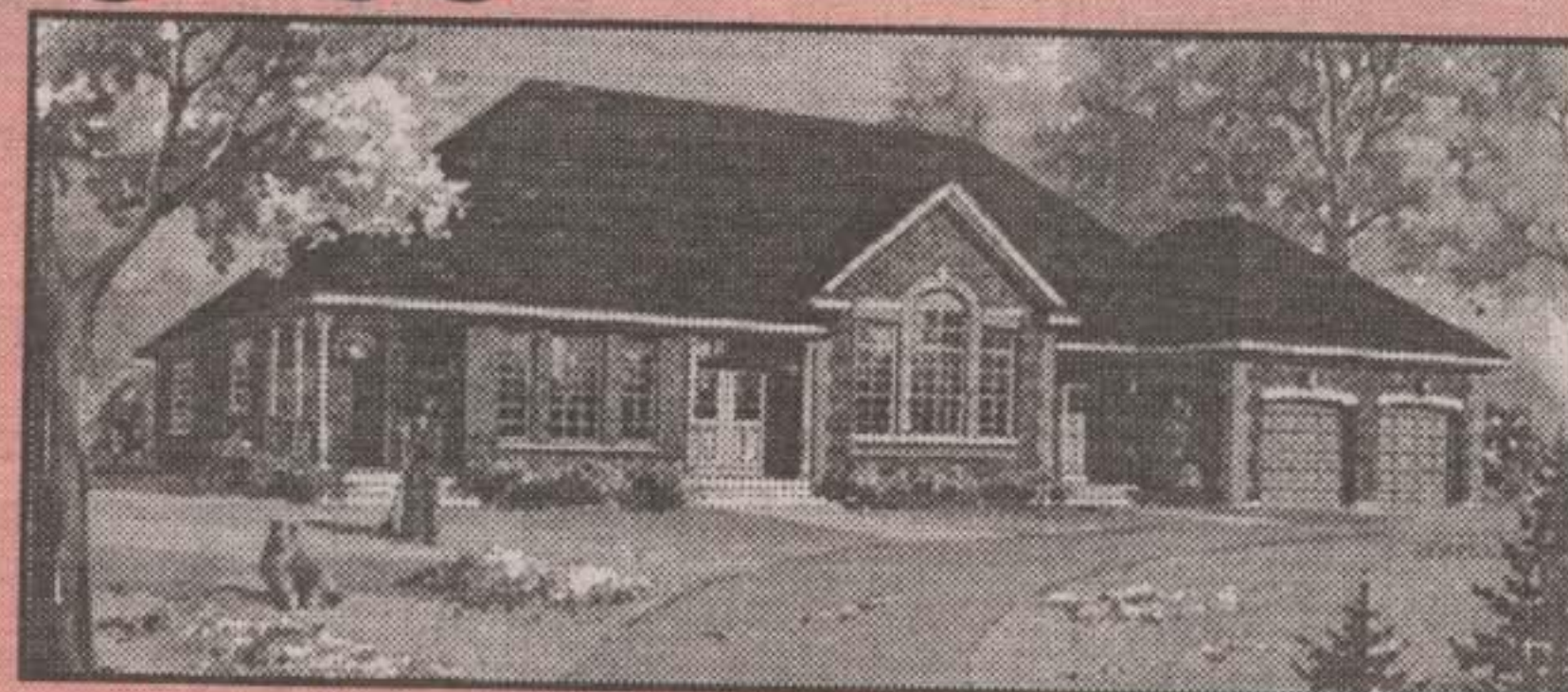


YVONNE HRKAC  
SALES REP.

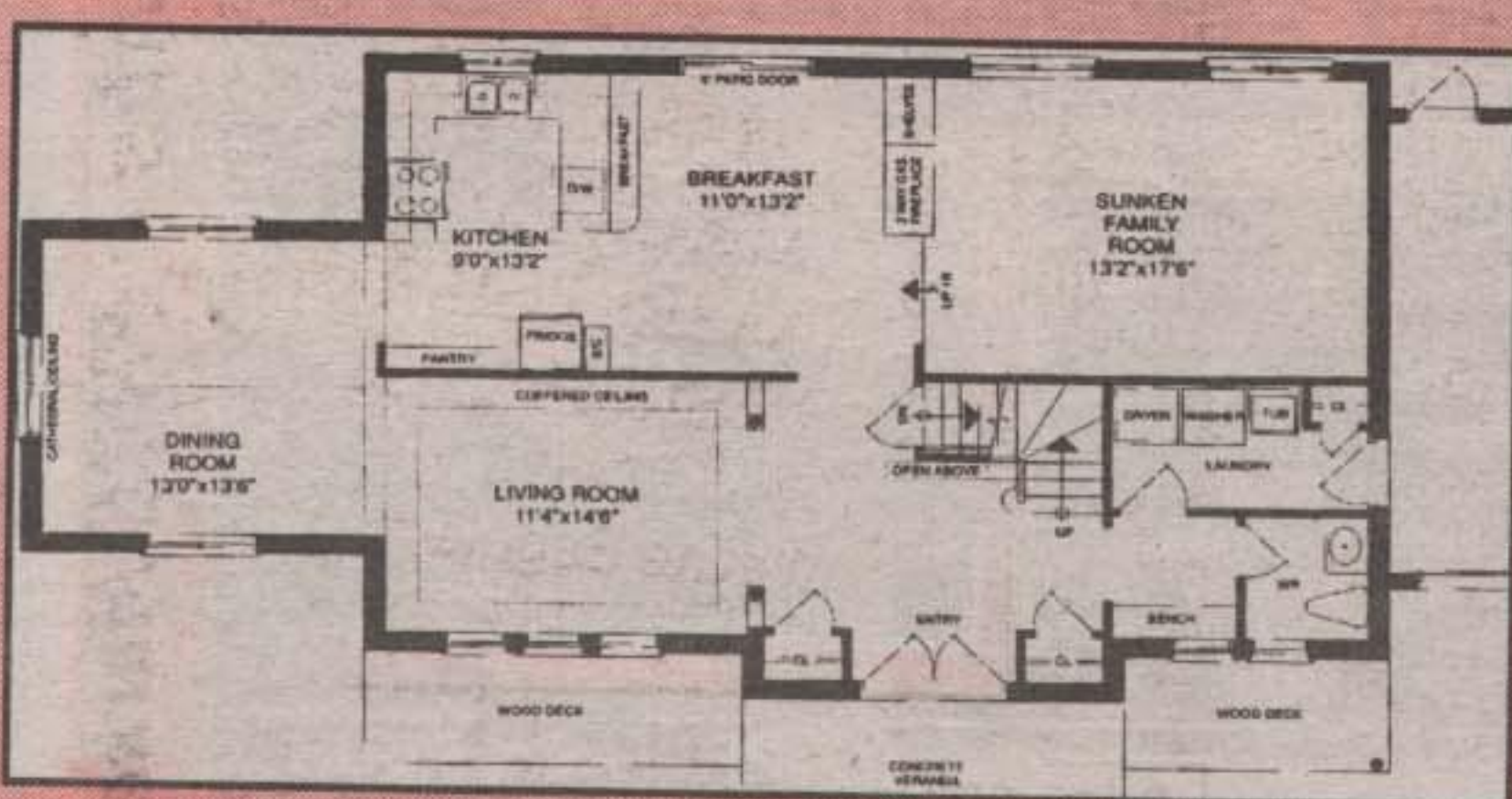
# WE LOVE BALLINAFAD!!



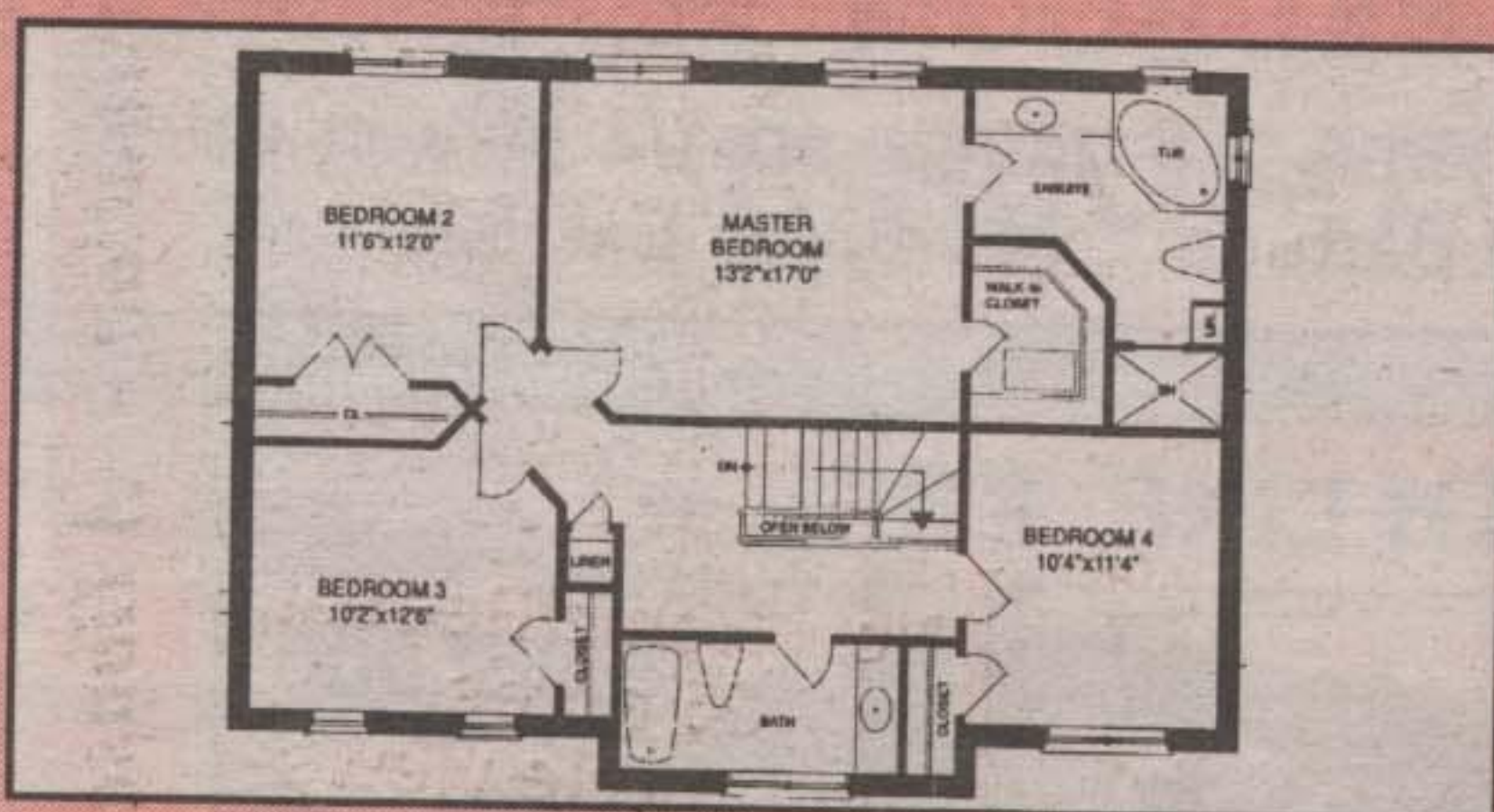
THE PINE



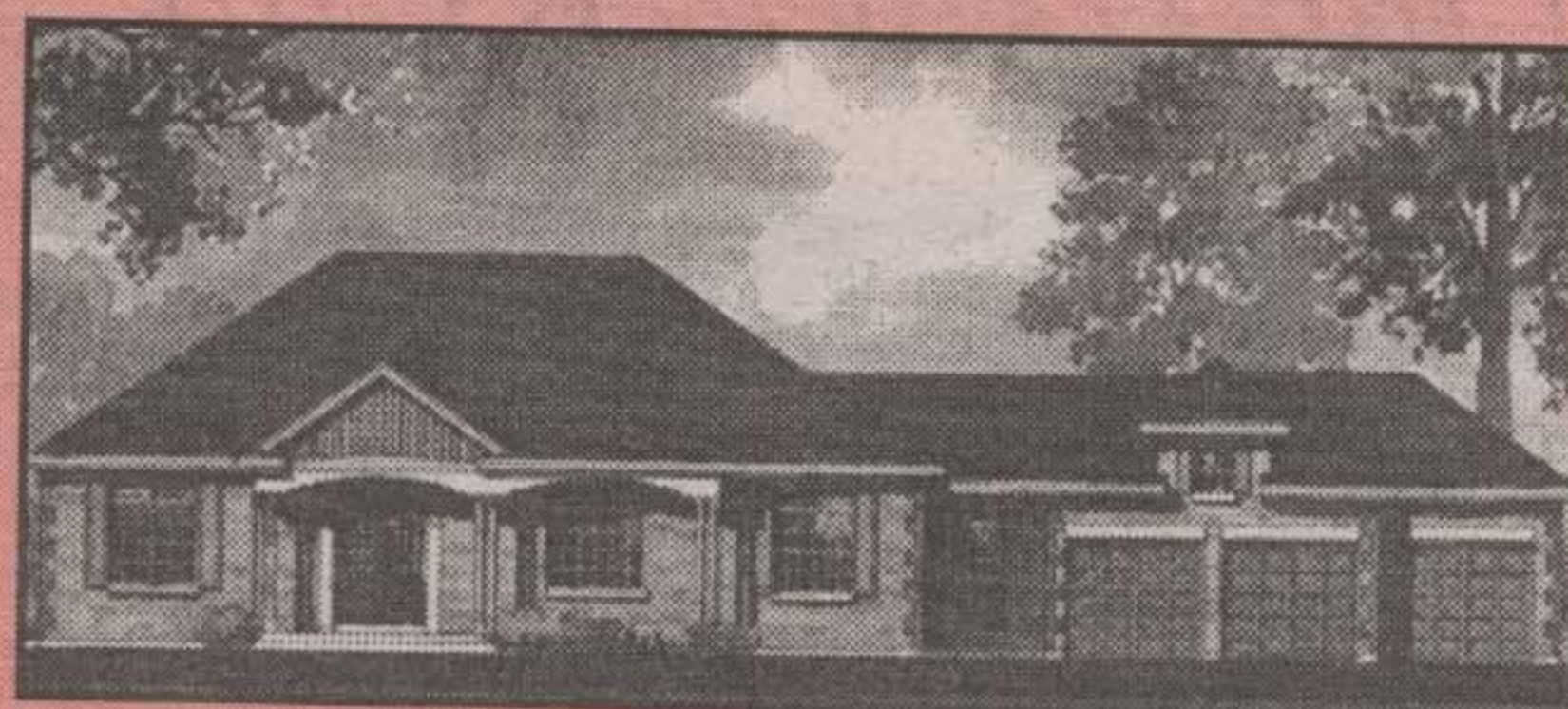
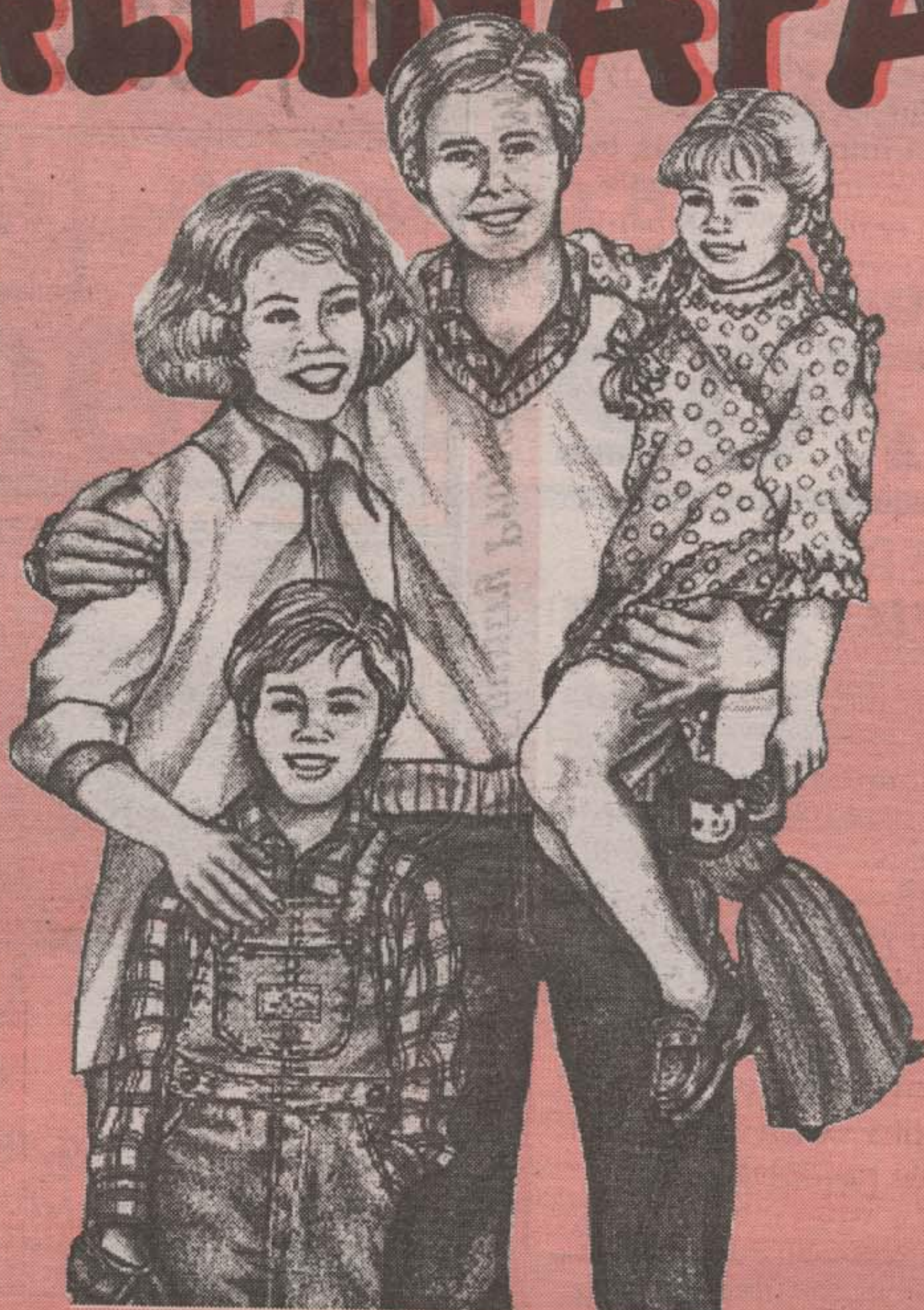
THE MULBERRY



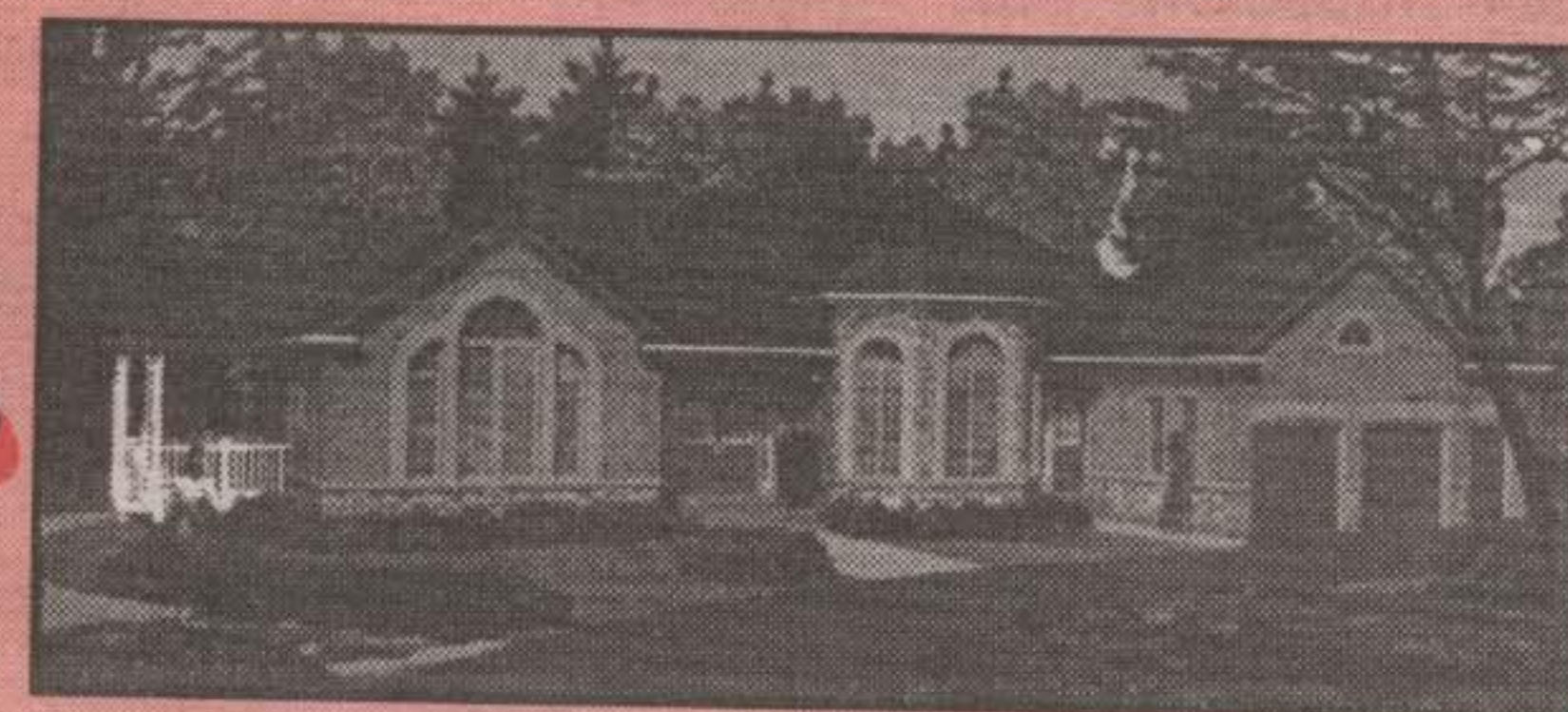
FIRST FLOOR PLAN



SECOND FLOOR PLAN



THE LINDEN



THE TAMARACK II

# WE LOVE GLEN WILLIAMS!!

## STAND OUT FEATURES OF THESE HOMES

- RENAISSANCE SHINGLES • HARDWOOD FLOORING
- 9' CEILINGS ON MAIN FLOOR • CERAMIC TILES
- 2'X4' CONSTRUCTION
- OVERSIZED DOUBLE OR TRIPLE SIZE GARAGE
- HIGH EFFICIENCY GAS FURNACE • GAS FIREPLACE

FOR INFORMATION  
CALL PETER OR YVONNE 877-5211  
ON THESE BALLINAFAD & GLEN WILLIAMS  
FAMILY HOMES.



Blue Springs Realty (Halton) Corp.

360 Guelph St., Georgetown