



"NO CONDO FEES"

Super semi, backs onto lake, 3 BR w/loft, 10' ceilings, huge living room, sunroom off kitchen with W/O to deck & fenced back yard. Welcome home \$124,900.



877-5211
Call Rychard & Start Packing!!

RYCHARD MCKEOWN*
Sales Rep.

RE/MAX Blue Springs Realty (Halton) Corp.



Carol Walraven*
Sales Rep.



Tony Walraven*
Sales Rep.

OPEN HOUSE

SUNDAY, MAY 3, 2 - 4 PM
76 CRAIG CRES., GEORGETOWN



\$339,000

Fabulous executive home on rare 60 foot lot. Beautifully decorated home boasts 5 bedrooms, professionally finished basement. Large workshop and home office.

RE/MAX Blue Springs Realty (Halton) Corp.

877-5211



PETER HRKAC
REMAX HALL OF FAME MEMBER

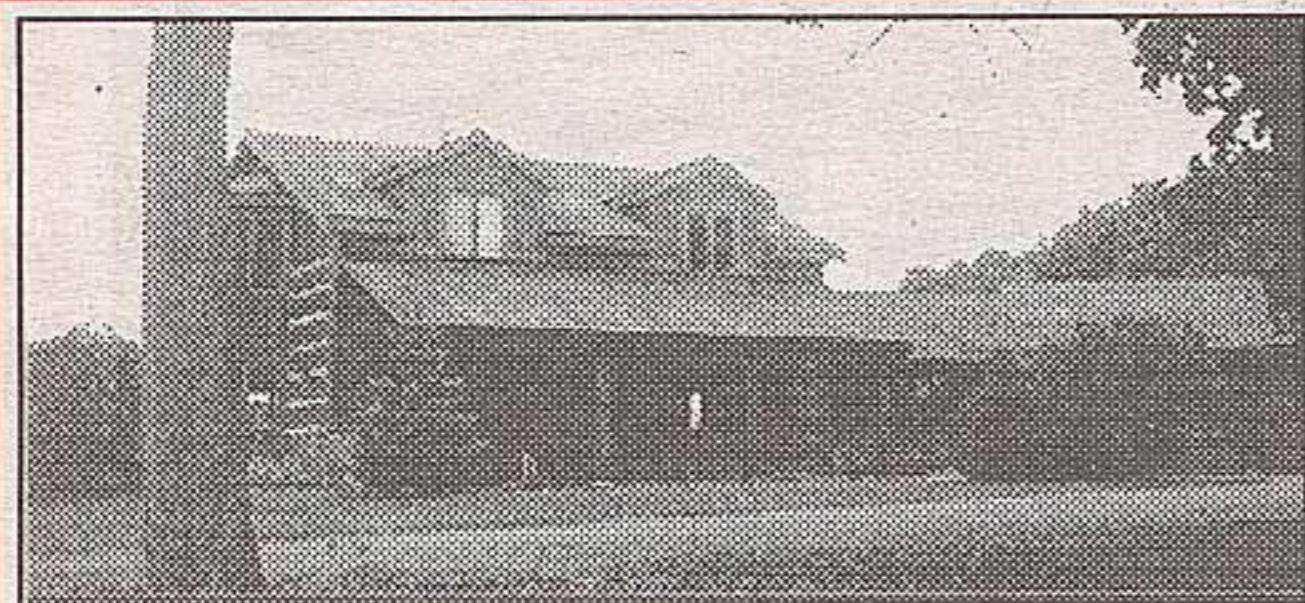


Blue Springs Realty (Halton) Corp.

Peter & Yvonne Hrkac* Sales Representatives
(905) 877-5211 TOR: (905) 874-3051



YVONNE HRKAC



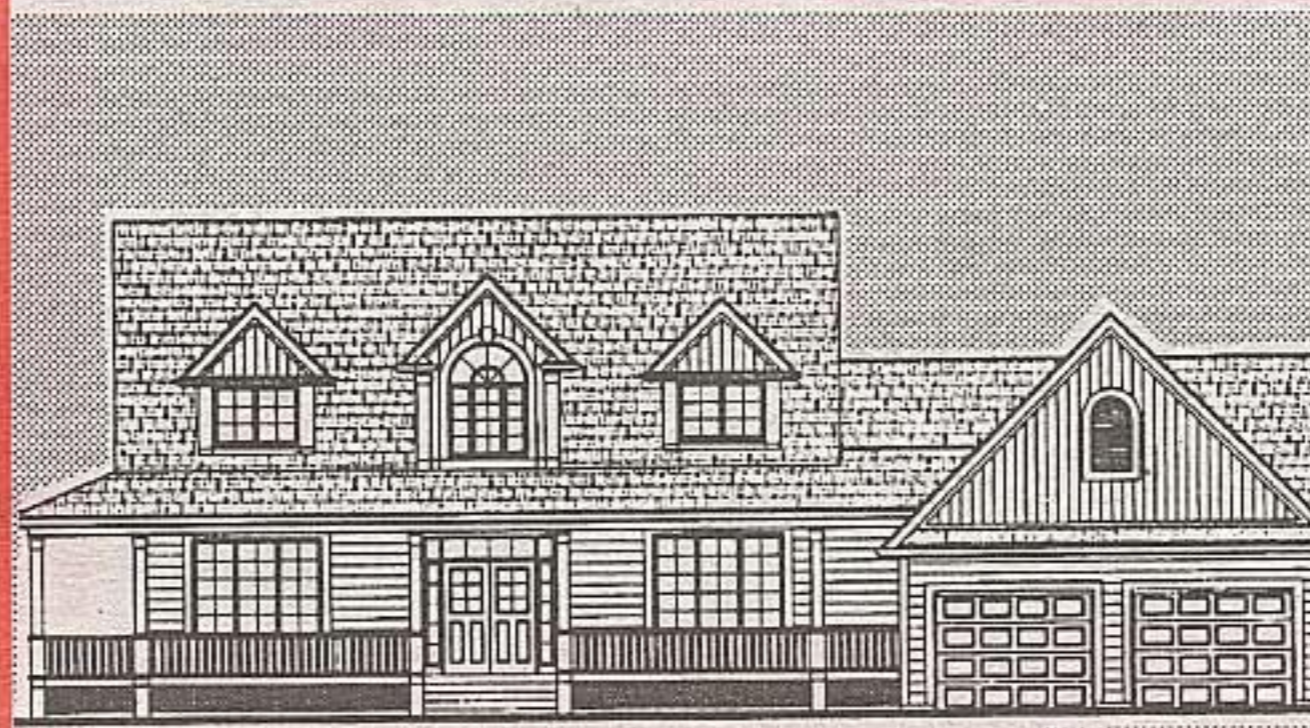
CHELTENHAM 89 ACRE HILLTOP ESTATE!!

Panoramic vistas from every room of this spectacular custom built residence. Stunning open concept design with cathedral ceilings, hardwood floors & Berber broadloom, 5 bedrooms, triple car garage, workshop, barn & pond. Constructed with the finest materials & quality workmanship. RM373-97



NORVAL CENTURY HOME ON 1/2 ACRE \$249,900

Circa 1896. Spacious home with original trim, mouldings & woodwork, small barn, 2 porches, mature trees, needs restoring, **TREMENDOUS POTENTIAL IN THIS VINTAGE HOME**, excellent location. RM201-97



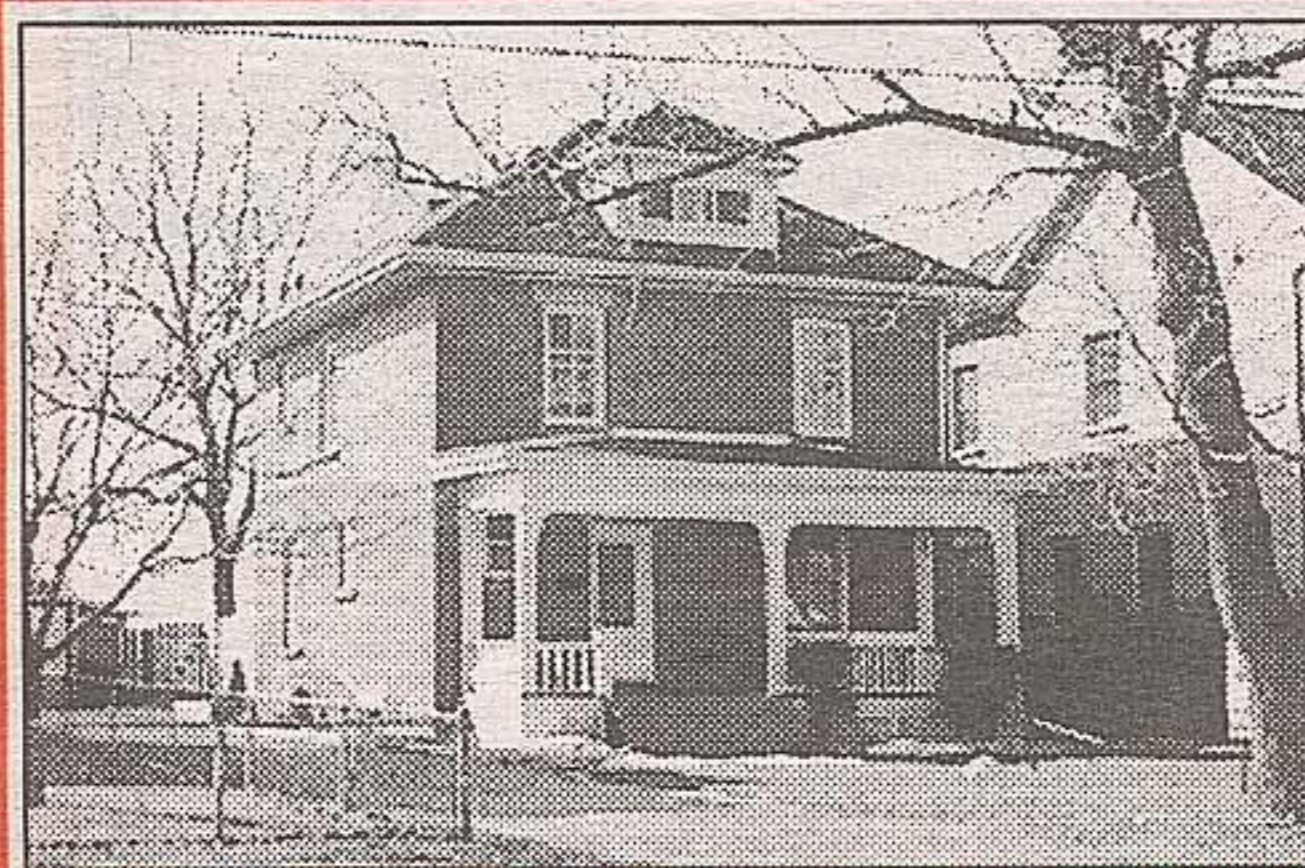
COUNTRY ESTATE SOUTHWINDS BALLINAFAD \$289,900

Brand new 2400 sq. ft. country home on 1.5 acres. 3 bedrooms, 3 bathrooms, main floor laundry. Cape Cod style with large front verandah.



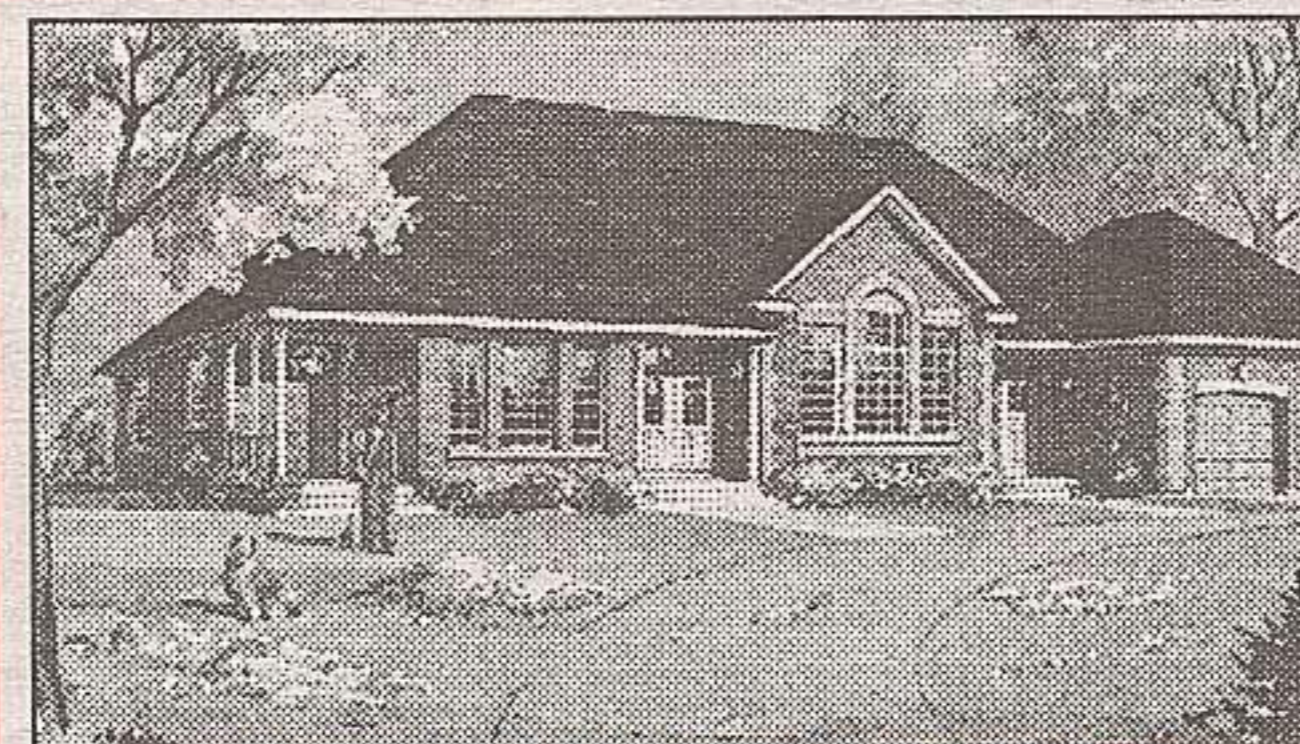
10 ACRE RANCH/HOBBY FARM EDGE OF TOWN!

Stunning escarpment property is ideally located close to Georgetown. Lovely home has been extensively upgraded & improved with top quality throughout plus a 3000 sq. ft. workshop with office plus a 6 stall barn & much more. Will suit the most discriminating buyer. RM448-97



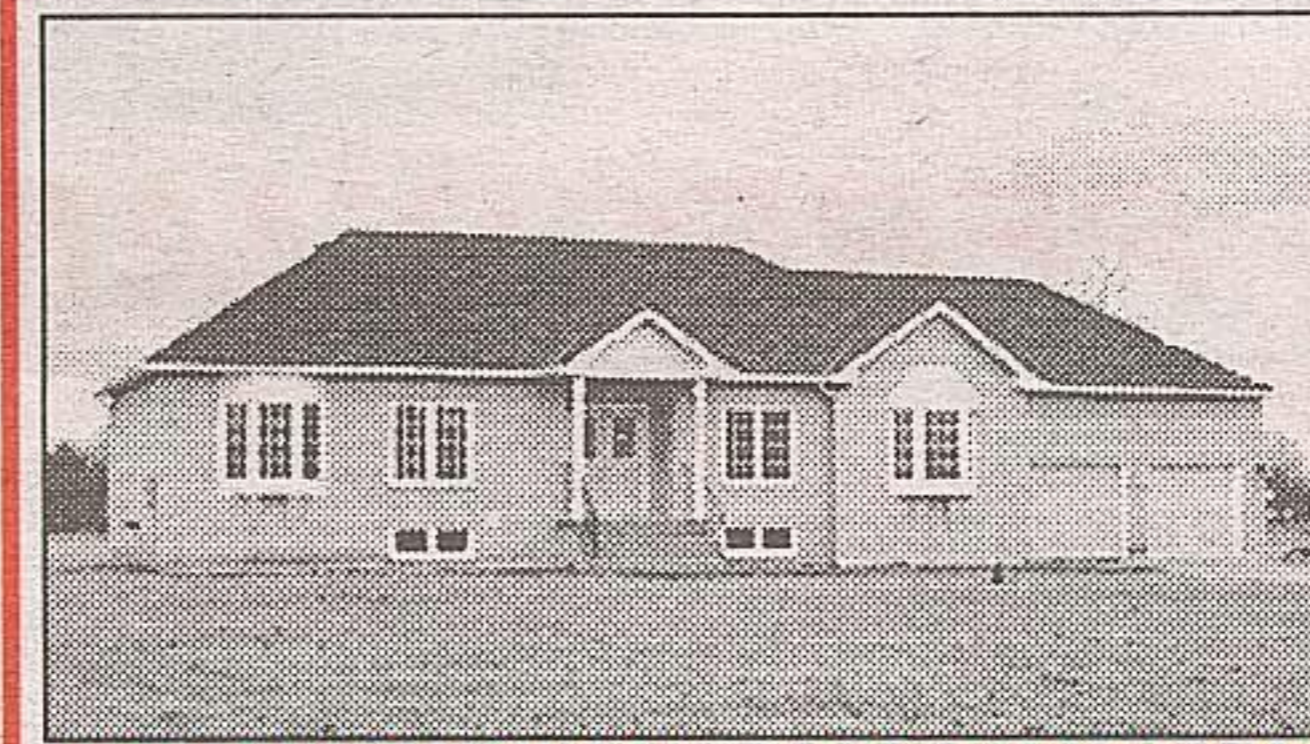
BRICK VICTORIAN IN GEORGETOWN \$189,900

Beautifully restored with wood floors, French doors, lovely bath with claw foot tub, finished attic room, 3 bedrooms, new roof, 200 amp service, alum. eaves & soffits, large front porch, large lot, detached garage & much more. Excellent location - close to all amenities. RM062-98



LOVELY COUNTRY ESTATE \$349,900

Backs onto Greenbelt, 1/2 acre with Town water & gas. Lovely new home approx. 2300 sq. ft. with triple car garage, w/o bsmt, vinyl windows, 9' ceilings, upgraded cabinets, ceramics, strip hardwood in fam. room, gas fireplace & much more. Immediate occupancy. RM505-97



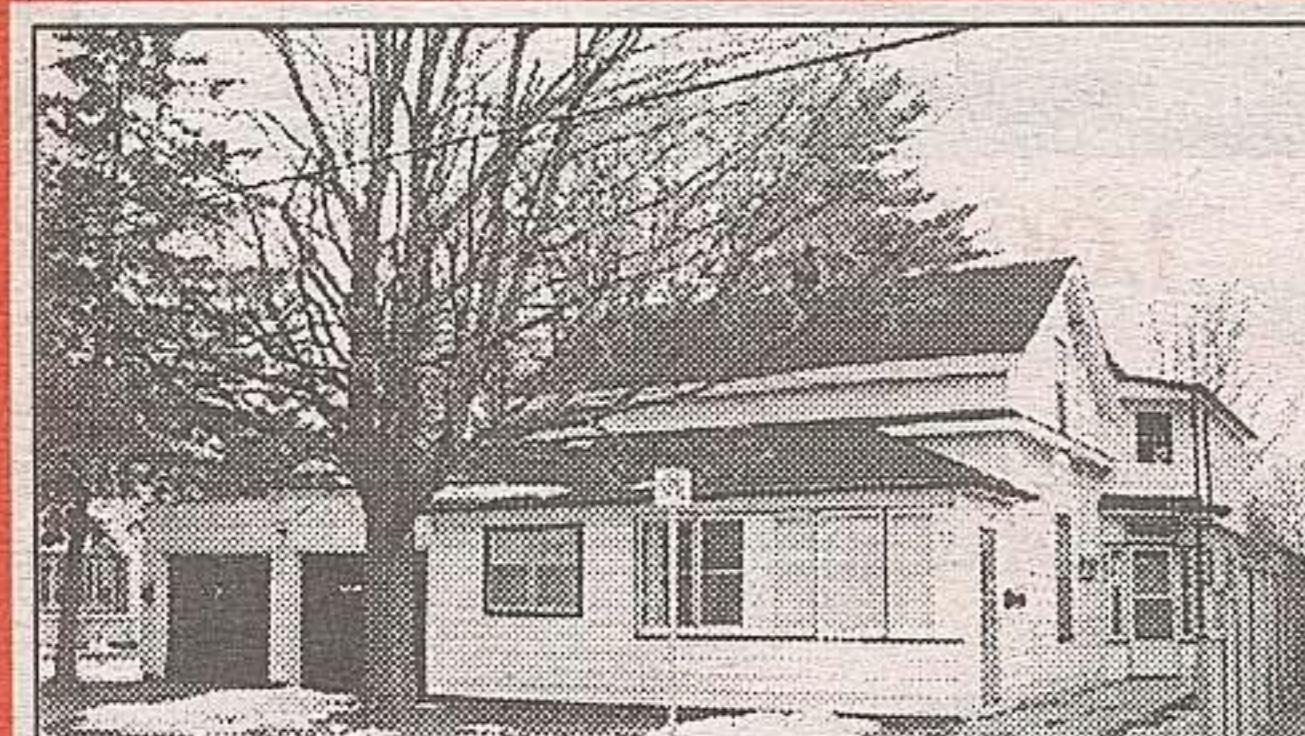
NEW BUNGALOW ON 1 ACRE ESTATE LOT \$277,900

Quality built home incl. 9' ceilings, fireplace in open concept fam. room, conv. main floor laundry, double car garage, 3 bdrms., sep. liv. & din. rooms, lots of bay windows make it bright & spacious. IMMEDIATE POSSESSION available. Excellent location. RM407-96



57 ACRES IN HALTON HILLS \$388,000

Excellent location - South of town near 401. Gorgeous scenic property with pond, barn & outbuilding. Set on the property is a rustic farmhouse with wood plank floors, 4+2 bedrooms, large living room with woodstove, separate dining room & kitchen with ceramic floor. RM338-97



LARGE TWO FAMILY HOME \$229,900

Features 2 self-contained legal units with separate meters. New roof, double car garage, large fully fenced lot. Bright spacious rooms. Ideal for 2 families or extra income. RM044-98



\$\$\$ 6 PLEX \$\$\$ IN GEORGETOWN

Excellent income producing property. Retrofit has been done and building is in excellent condition. Convenient location - close to GO Train. Fully rented. RM328-97

IN GEORGETOWN .629 ACRE IN TOWN LOT - \$99,000

Well located building lot. R-4 zoning allows for single family, semi, duplex or six-plex. Excellent value. Call Peter*. RM043-97



INCOME PROPERTY IN GEORGETOWN \$299,900

Brick 4-plex with excellent income and a great location - close to GO Train and all amenities. Fully rented. RM515-97



TURN OF CENTURY FARMHOUSE

\$189,900

Charm of yesteryear, but with updated windows, wiring & plumbing. Hardwood floors, large country kitchen, lovely tin ceiling in dining room, main floor laundry & more. Excellent Caledon East location. Town water & sewers at road. Large lot 67' x 294'. RM205-97