

You Are Reading . . .

The Independent & Free Press

Real Estate Digest

INDUSTRIAL CONDO UNITS
LAWSON ROAD MILTON - NEAR 401
FROM \$99,000

10 ACRES HWY. #25 FRONTAGE
CORNER LOT. 5 KM NORTH OF ACTON
\$119,000 VENDOR WANTS TO SELL!



PARK LIKE SETTING
70' x 160' lot backing onto conservation valley lands. Five BR, solarium kitchen, 3 walkouts to deck, large main floor family room, L shaped LR & DR, hardwood, central air. This one has it all \$239,000. Call John*.



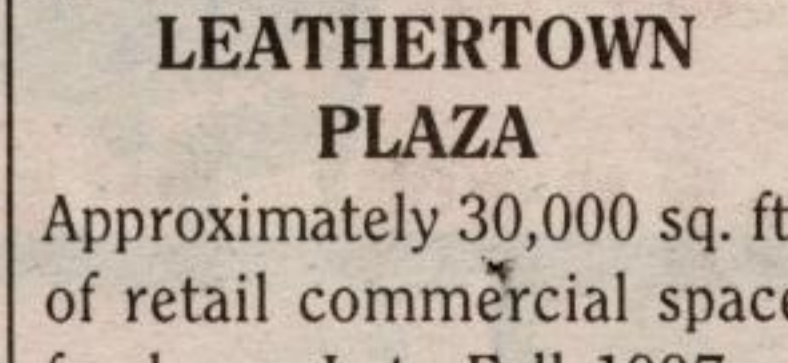
PINERIDGE RD., ERIN
Charleston custom home built in 1996. Vendor relocating to US. 1.4 ac. lot. 5 BR, main floor office, family room and formal dining room, Bleached Oak flooring. Fabulous Barzotti kitchen. Superb quality & luxury. \$359,000. Call John*.



50 ACRE HOBBY FARM
Nature lovers delight. Ponds, streams, trails, 4 stall horse barn, two additional out buildings, 3 bedrooms, LR, DR, den, glassed in sunporch, hobby room and great rec room. Two fireplaces, forced air oil heating. \$299,000. Call John*.
RMAC97-130



LAKE BELWOOD LOTS
3/4 ac. to over 1 ac. overlooking the lake. Paved roads, sidewalks, street lights. Individual septic and well required. Priced from \$32,500.



LEATHERTOWN PLAZA
Approximately 30,000 sq. ft. of retail commercial space for lease. Late Fall 1997 or Spring 1998 occupancy. Call John* for further details.



NEW LISTING
Four bedrooms, two 4 pc. bathrooms, open concept kitchen/living room/dining room. Terrific kids playroom with loads of storage. Large family room. Located in Erin Village. \$169,900. Call John*.
RMAC97-146

CUSTOM CRAFTED HOMES
PRICED FROM THE LOW
\$200,000's IN ERIN

Charleston HOMES

PRICED FROM THE \$170,000's IN BELWOOD



PATRICK DR. ERIN
New Charleston home under construction. Available 90 days. Three bedrooms plus den/office, great rec. rm. with gas fireplace. Dining room, family room, one 4 pc., one 3 pc. 2 car garage. \$229,000. Call John*.
RMAC97-137

Charleston HOMES have built over 150 custom homes in the past five years. They will build for you on one of their lots or will do a design build on your lot. Call John* for details.



FABULOUS BELWOOD BUNGALOW
2500 sq. ft. finished living space. Only \$194,900. Under construction. Available 90 days.



ON GOLDEN POND

HIGHLANDS OF HILLSBURGH - \$299,000

Spectacular 3 bedroom executive custom bungalow. Quality built 2,000 sq. ft. main + 2,000 sq. ft. basement, 2 years new on magnificent 1.7 acres with stocked pond, bridge, and two storey playhouse. Thousands spent on upgrades and landscaping. Open concept kitchen with centre island, greenhouse breakfast area, family room with gas fireplace all overlooking pond and beautiful acreage. French doors and hardwood floors in formal separate living room/dining room. Oversized double garage and second fireplace in basement. Absolute must for the discerning buyer!

JOHNSON ASSOCIATES HALTON LTD., REALTOR

Lynn Drewry*
*Sales Rep. (905) 877-5165

WONDERFUL FAMILY HOME

On huge country lot, 83'x220', 4 large bright bedrooms, cozy main floor family room featuring a brick fireplace and a walkout to a lovely covered deck. New broadloom on stairs, upper hallway and one bedroom. Freshly decorated, move-in condition. Double car garage.
RM342-96

4 BEDROOMS ON 8 ACRES

This custom built, recently decorated, log, board & batten home is located on a paved road. Walkout from kitchen to a huge 24'x8' deck which overlooks rear yard and hardwood bush. Cozy main floor family room with fieldstone fireplace, and decorated with authentic barn-board. Solarium with 8 person hot tub. To view please call Rud Whiting* (905) 877-5211. Tor. line (905) 874-3051.
RM189-97

RUD WHITING* Sales Representative

RE/MAX BLUE SPRINGS (Halton) CORP.
877-5211

RE/MAX BLUE SPRINGS REALTY (Halton) CORP.

JOHN BARTLETT *Sales Representative
RESIDENTIAL AND COMMERCIAL
(519) 853-2086 (905) 874-3053

It's The Experience!

MEMBER OF RE/MAX 100% CLUB

The mark of a great agent.

877-0173
Toronto (905) 874-3068

ROYAL LEPAGE

How you find a great real estate agent.

170 GUELPH ST., GEORGETOWN L7G 4A7 ROYAL LEPAGE REAL ESTATE SERVICE LTD., Broker

									***Sales Assistant
Gary Brand**	Marilyn Champ*	Richard Judd*	Carole MacLeod*	Tony Maan***	Mary Maan*	Betty McKend*	Donna Robbins*	Julia Stuart*	*Sales Representative
									**Associate Broker

\$142,000 BUYS YOU - Condo living (no outside maintenance worries), comfortable mortgage, 3 bdrms, living room with fireplace, walkout from kitchen to deck overlooking miles of country, walkout from professionally finished bright basement. Like the style? Call Mary Maan* . 31-167	LOCATION - LOCATION - LOCATION Well sited on a large country lot overlooking the Credit River Valley. Custom built 3 bedroom bungalow. Picture windows. Oversized double garage. Circular drive. Offered at \$239,900. Phone Carole MacLeod* . 10-7	ORIGINAL LOG HOME • Built 1823 • Only \$300,000. • Open hearth stone fireplace • Large country kitchen • Screened sun room • 25 rolling, treed acres with spring fed pond. Call Donna Robbins* for viewing. 10-4	"THE RIGHT TIME" \$297,000. • For a country move • to a larger home! • About 2600 sq. ft. • Bungalow • 4 bedrooms • Big deck • Eat-in kitchen • Pocket doors. Call for viewing. Betty McKend* . 32-70
SUPERB COUNTRY LOCATION!!! 10.3 acres of picturesque property on a dead end road. Lots of Maple & Pine trees complete the setting. Backing onto Maple sugar bush. Over 1400 sq. ft. of living space in this delightful 8 room bungalow. Attached single car garage with access to home. Walkout from king room to private deck & patio area. 2 large sheds. 28'x 35' and 21' x 40'. 1 workshop 24' x 48' with concrete floor & 200 amp service. Call Julia Stuart* . 2-10	\$234,900 - EXECUTIVE 2 STOREY Very convenient in-town location - double garage, main floor family room with fireplace, main floor laundry, almost finished basement with fireplace & walkout to deck & fenced yard. Call Marilyn Champ* . 4-93	WELCOME THE SUMMER! \$449,000 - fenced 10 acres with 1 acre pond. Main house approximately 4500 sq. ft. 2 bungalows, 3 bedroom & 2 bedroom, 3 cabins, in-ground pool, tennis court. Call Richard Judd* for an appointment to view. 5-97	HILLSBURGH HIDEAWAY 13 Acres with ponds, private flood-lit tennis court, 4 bedrooms and 2 baths. Ideal retreat. \$279,900. Call the duty agent. 8-11