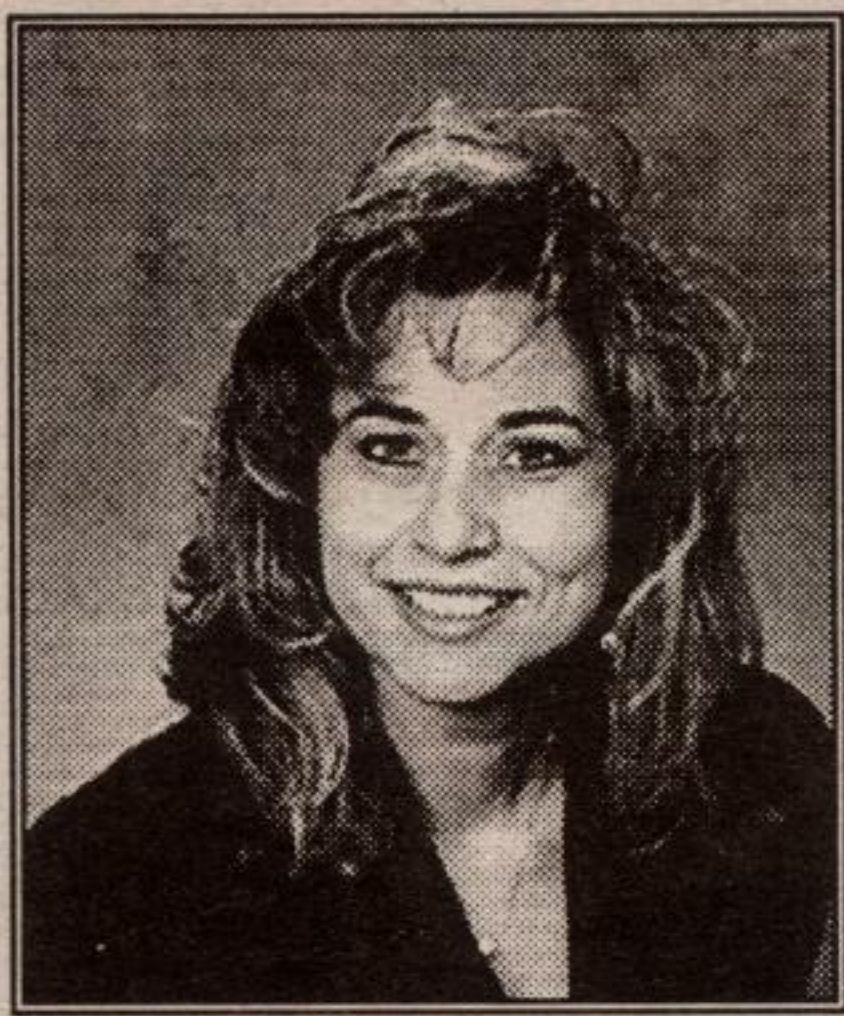


You Are Reading . . . The Independent & Free Press Real Estate Digest



ANGIE CORMPILAS,
Assoc. Broker**
PLATINUM CLUB MEMBER
& 100% CLUB MEMBER

**RE/MAX BLUE SPRINGS
REALTY (HALTON) CORP.**

360 Guelph St., Georgetown
877-5211

Allow the top producing female agent in
Georgetown to help you sell your home.

**THE AGENT THAT
WON'T DISAPPEAR**

AFTER THE SIGN IS UP!

Your home advertised every week until sold.



GEORGETOWN EXECUTIVE \$229,900

Almost new raised bungalow. Open concept main floor with cathedral ceilings. Bleached oak eat-in kitchen, C/air, sunny yard. Master bedroom has huge closet, luxury ensuite. Family room has fireplace too! Call Angie**. RM192-97

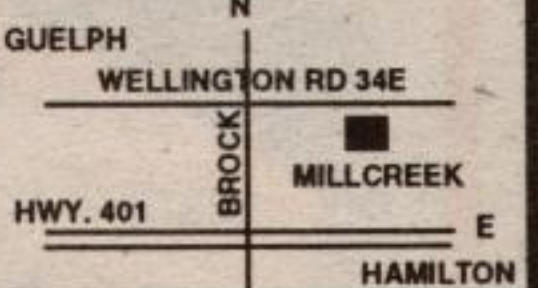
**AFFORDABLE LIVING IN A YEAR ROUND
ADULT COMMUNITY**

Modular Homes
Priced From: **\$64,900**

One Bedroom & Two Bedroom, Two Bathroom
"Specialized in Custom Built Modular Homes"



**Millcreek Adult
Community**
(519) 763-1048
Aberfoyle, Ontario



ROYAL CITY REALTY 450-3355

ROYAL CITY REALTY 450-3355

**STONE HOUSE
94 ACRES**

Unique opportunity of a charming stone cottage on rolling acreage, plus bank barn, other outbuildings, pond sites, south of Hwy. 9 and within an hour and a half drive to Toronto. A "now" place or, with some investment, a stunning property worth much more than presently asking \$195,000.

RCR3787



CULVER RILEY* Sales Representative

(905) 450-3355

ROYAL CITY REALTY (Dufferin) LIMITED



CULVER RILEY* CULVER RILEY* CULVER RILEY* CULVER RILEY*

OPEN HOUSE

SUNDAY, MAY 4, 1:30-4:30

38 CLEAVEHOLME DRIVE, GEORGETOWN



DETACHED BRICK BUNGALOW

Fully finished basement with fireplace, 3 plus 1 bedrooms, two baths, high efficiency gas furnace with central air, formal dining room hardwood floor & garage. Just \$209,900. For a personal tour, please call Mal Dodge*.

RM027-97

MAL DODGE*

Sales Rep.

877-5211

RE/MAX

Blue Springs Realty
(Halton) Corp.

WE BUILD THE ONLY CUSTOM HOMES IN GEORGETOWN

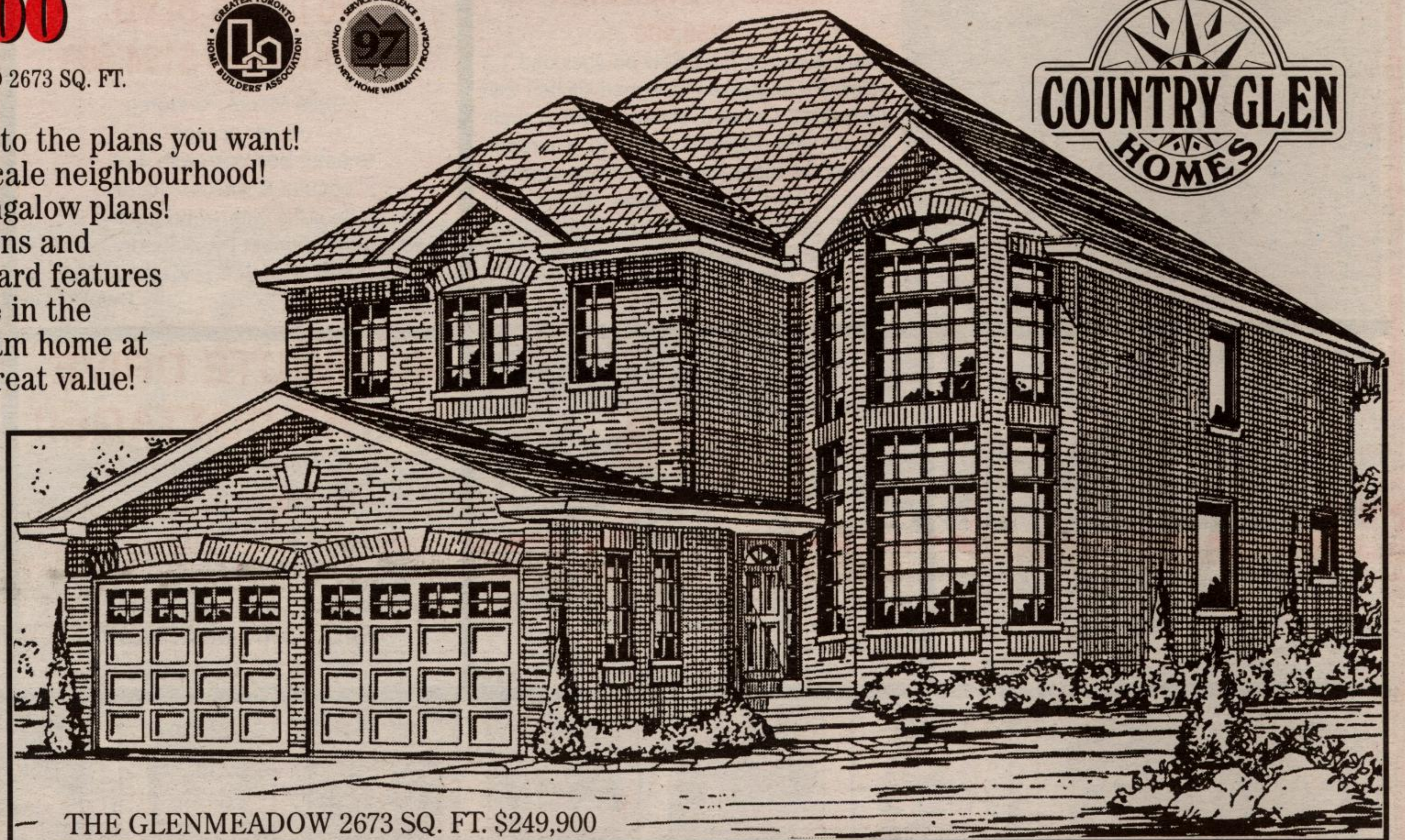
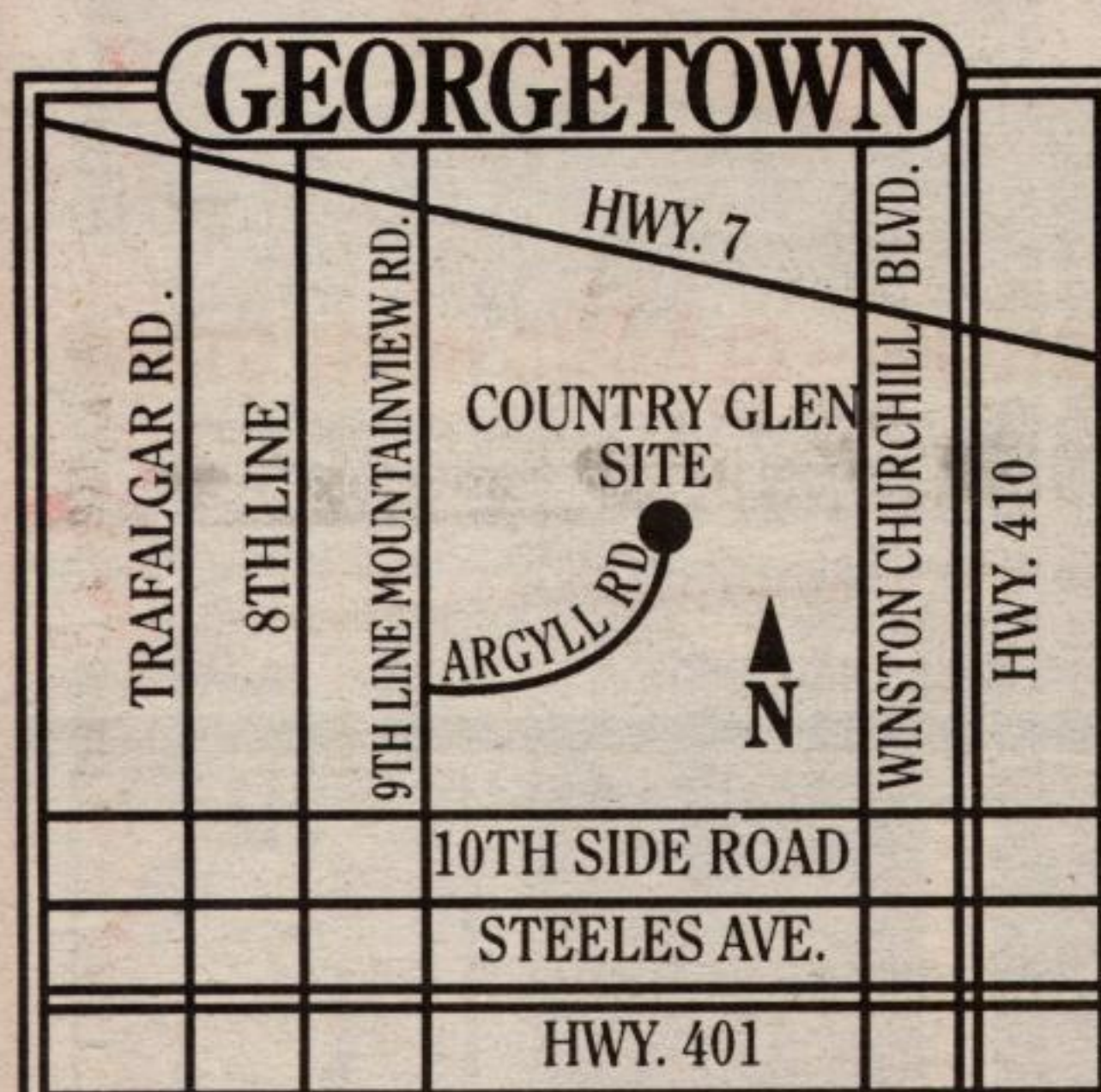
AND WE SELL THEM AT SUBDIVISION PRICES!

\$209,900

FROM ONLY UP TO 2673 SQ. FT.



Make all the Design alterations to the plans you want!
Live in Georgetown's finest upscale neighbourhood!
Choose from two storey and bungalow plans!
Receive the most wanted kitchens and bathrooms!
Get the finest standard features available!
Enjoy the best service in the building industry!
Buy your dream home at subdivision prices! Now that's great value!



THE GLENMEADOW 2673 SQ. FT. \$249,900

HOURS: MON. TO THURS.
2:00 TO 8:00 PM.,
SAT. SUN. & HOL. 11:00 AM.
TO 6:00 PM., CLOSED FRI



CALL (905) 702-1171

COME & VISIT OUR FABULOUS MODEL HOME TODAY AND MEET THE BUILDERS PERSONALLY