

## TV & VCR REPAIRS

All models, also Microwaves,  
Stereos & Cameras.

**RCM** 873-1820



**J.J. ELECTRONICS**

360 Guelph St., #47, Georgetown

## Oakville Catholic school #1 on priority list

Despite extensive lobbying from other Halton schools, Oakville's West Oak Trails community is still number one on the Halton Roman Catholic School Board's Capital Expenditure Forecast (CEF) list. Last Tuesday night, hundreds of people packed the

school board's meeting room in Burlington hoping to convince the trustees to put their schools at the head of the list.

The CEF list is used as a guide by the Ministry of Education when it provides funding to the school board for new schools and renovations to

older schools.

At the end of the night, a new school for the West Oak Trails community remained the board's top priority, and former number one priority school—Holy Rosary School of Milton—was ranked as the board's third priority.

## Enter our Mother's Day cookbook contest

Give Mom something she will really like for Mother's Day on May 11—the latest Jean Paré's Company's Coming cookbook. Called Meatless Cooking, it has lots of great tasting recipes for the health-conscious cook.

All you have to do to win one of 10 free copies is answer the following 10 questions correctly, attach your name, address and telephone number and mail it to the Independent & Free Press office, 211 Armstrong Ave., L7G 4X5 or drop it off at the office (we do have a mail slot), drop it off at the newspaper's drop box in the ASSIC office on Willow St. in Acton, or fax it to us at 873-0398. Deadline is May 5 at 5 p.m.

The Independent & Free Press will draw 10 lucky names from the submissions with all the correct answers.

### 1. What is tofu?

- A rap star from California
- A soy milk product also known as bean curd
- A deadly martial art using your toes

### 2. How do you have your eggs and reduce your cholesterol too?

- Substitute 2 egg whites for 1 whole egg
- Juggle a dozen in the air for 5 minutes
- Hatch them

### 3. What main ingredient gives guacamole its green color?

- Grass clippings
- Mashed avocados
- Crushed crayons

### 4. What's bulgar?

- A sport where the team shouts "Bulgar!" after scoring
- Swearing in public
- Wheat kernels commonly used in Tabbouleh \*(Ta-BOO-lay)

### 5. Tahini is...

- A Hawaiian dance
- A spread made with sesame seeds
- A teeny weeny swimsuit

### 6. Which of the following are varieties of legumes?

- Beans
- Peas
- Lentils
- All of the above

### 7. What ingredient is commonly used in vegetarian cooking because of its nutritional value?

- Nuts
- Bubblegum
- Beeswax
- Which is not a rice?

- Arborio
- Basmati
- Confetti

### 9. If you were a vegetarian, which of these would you most likely prepare?

- Black Bean Soup
- Lentil Soup
- Minestrone\* Soup
- All of the above

### 10. What do pinto, lima and kidney have in common? They are...

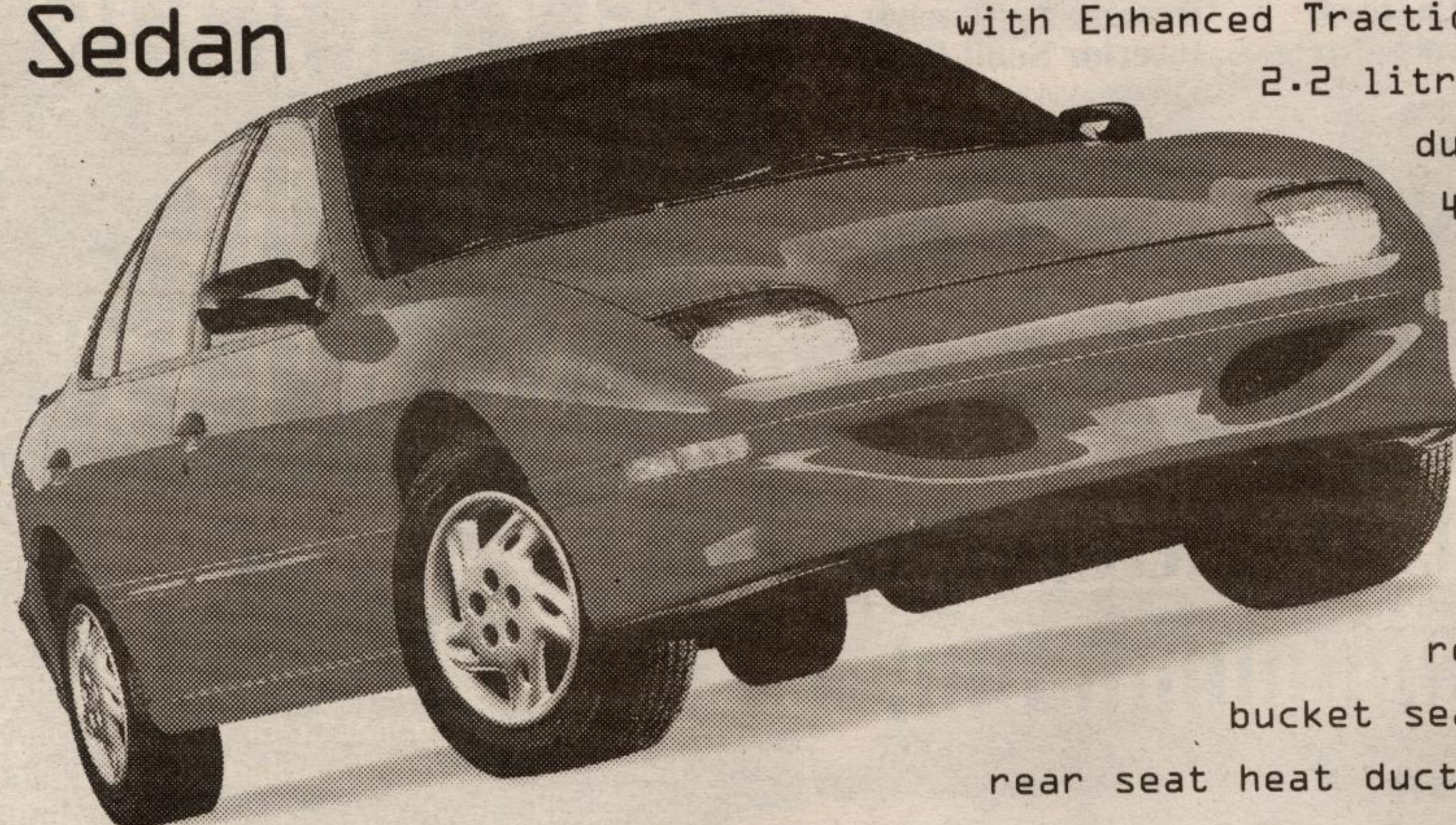
- Models of cars
- The names of Columbus' ships
- Varieties of beans
- Breeds of horses

PERFORMANCE DEALERS

YOUR PONTIAC

# Two things our competitors don't want you to see.

## '97 Sunfire Sedan



4-speed automatic transmission  
with Enhanced Traction System

2.2 litre engine

dual air bags

4-wheel ABS

PASSLock® theft

deterrent system

air conditioning

AM/FM stereo

cassette

folding rear seat

reclining front

bucket seats

rear seat heat ducts

## Our Price.

SMARTLEASE

**\$239\*** per month / 36 months

Purchase

**\$17,359†**

(excludes freight \$620)

Now

only **\$1000** down

Get what you want from your

Pontiac Performance Team



**3.9%\*\*** VALUE FINANCING on selected vehicles



Don't forget to use your GM Card Earnings toward The Total Purchase Price or lease down payment of your next new GM vehicle.†

What's your card done for YOU lately?

\*GM Card Earnings may be applied toward The Total Purchase Price or lease down payment of any eligible new General Motors Vehicle. Fleet sales and commercial leases excluded. For complete details on vehicle eligibility, see your General Motors Dealer.

You should know this: \*Based on a 36 month lease for 1997 Sunfire Sedan LSA equipped as described. A minimum down payment of \$1,000 and \$300 security deposit are required. Annual kilometre limit: 20,000 km. \$0.08 per excess kilometre. OAC. Other lease options available. †Freight \$620, licence, insurance and taxes are not included. Dealer trade may be necessary. Dealer may sell/lease for less. See Dealer for details. \*\*Financing on approved GMAC credit only. Example: \$10,000 at 3.9% APR, the monthly payment is \$225.33 for 48 months. Cost of borrowing is \$615.84. Total obligation is \$10,815.84. Down payment may be required. †††Offers apply to 1997 new or demonstrator models only and applies to qualified retail customers only. Limited time offers which may not be combined with other offers. See Dealer for details.