

You Are Reading . . . The Independent Real Estate Digest

Weekend Edition & Free Press



JENNIE STANHOPE

Sales Rep.
24 hour pager

CALL ME TO ARRANGE A VIEWING OF ANY OF THESE PROPERTIES.

853-2074



THREE IN ONE

3 self contained homes on beautiful 97 acres with rolling farmland, bush, pond, barn and enjoying easy access to the 401. Each home is unique and well maintained so if you can enjoy this type of lifestyle call **Jennie*** for all the facts.



RCA7-035



BYE BYE LANDLORD!

Easy living in this well kept townhome. Dining room, rec room, huge master bedroom, forced air gas, deck and more. Only \$108,900. RCA7-020

"TO GET TOP MARKET VALUE IN THE SHORTEST TIME GIVE JENNIE A CALL" 853-2074

NOT INTENDED TO SOLICIT PROPERTIES ALREADY LISTED



Maureen Plucinsky B.Sc.

Sales Representative
Town & Country Specialist

Loc.: (905) 877-5211
Tor.: (905) 874-3051

Free evaluation <http://www.aztec-net.com/~maureen>



Blue Springs Realty
(Halton) Corp.

Erin: (519) 833-7117
Fax: (905) 877-5154

Georgetown

\$359,900
~ 1Ac.



Unique elegant home on superb acre with stream, pond & in ground pool backing onto mature bush. 4+ Bdrms, 3 x 4 piece washrooms, 2 FPs. Glass & screen sunroom. ~ 10 minutes to GO train station.

Caledon

Terra Cotta

~ 17.34 Ac.

S of Belfountain. Exquisite private senior executive retreat on the top of the Niagara Escarpment surrounded by hundreds of acres of conservation with easy access to Toronto. Exceptional attention to design, light, space, quality of materials & craftsmanship.

Halton

\$225,000
~ 10 Ac.



Attractive, well maintained with MF in-law suite. Most windows replaced. New oil furnace in 92; washroom and roof shingles in 89; pressure tank pump in 90. In-law freshly painted & carpeted.

Erin

\$278,000
~ 23 Ac.



Two Family Hobby Farm. 2 for the price of 1 Semi-detached In-Law apt. FAO/wood. Land suitable for horses. Quiet road. Set back across Eramosa River tributary.

Erin

\$258,000
~ 7.45 Ac.



Majestic energy efficient Timber-Frame ~ 4,000 sq. ft. Treed, private lot. Drilled well. Soapstone FP. Hot water oil heating. Awaits your finishing touch.

Halton Hills: \$149,900 ~ 1.8 Ac.

(200' x 400') high & dry. ~ 3 min. to the Hwy 401

Halton Hills: \$164,500 ~ 49 Acres

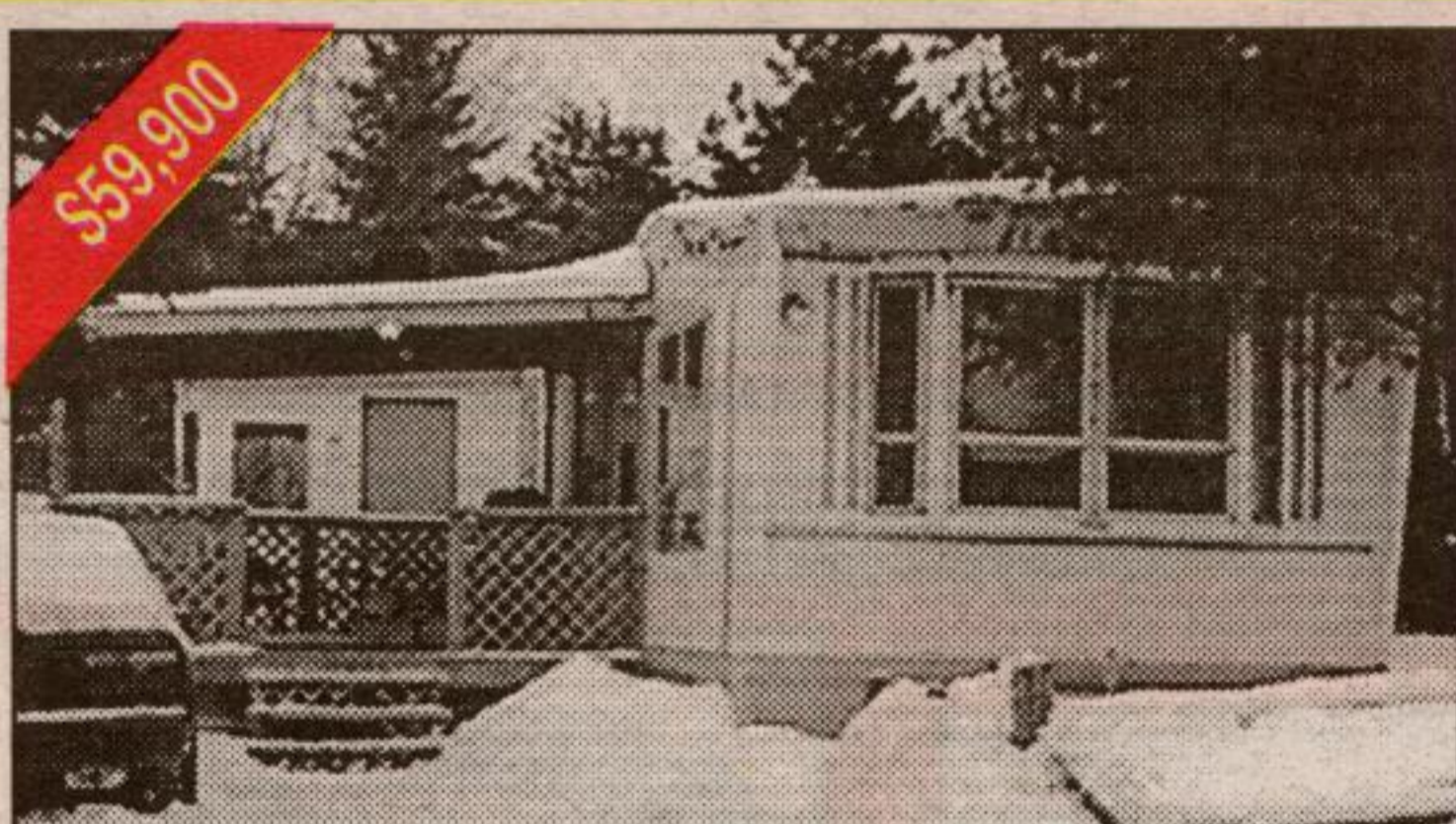
Mostly treed. Near Georgetown on Hwy 7

Erin: \$138,000 ~ 33 Ac.

(749' x 2,000') Treed

Visit my web page for more information.

Don Parker Says: ...Drive Safely, Play Safely, Work Safely



\$3,000 DOWN ...

will get you into this lovely home with central air conditioning. Note the trees and large deck. More details from **Don Parker***.

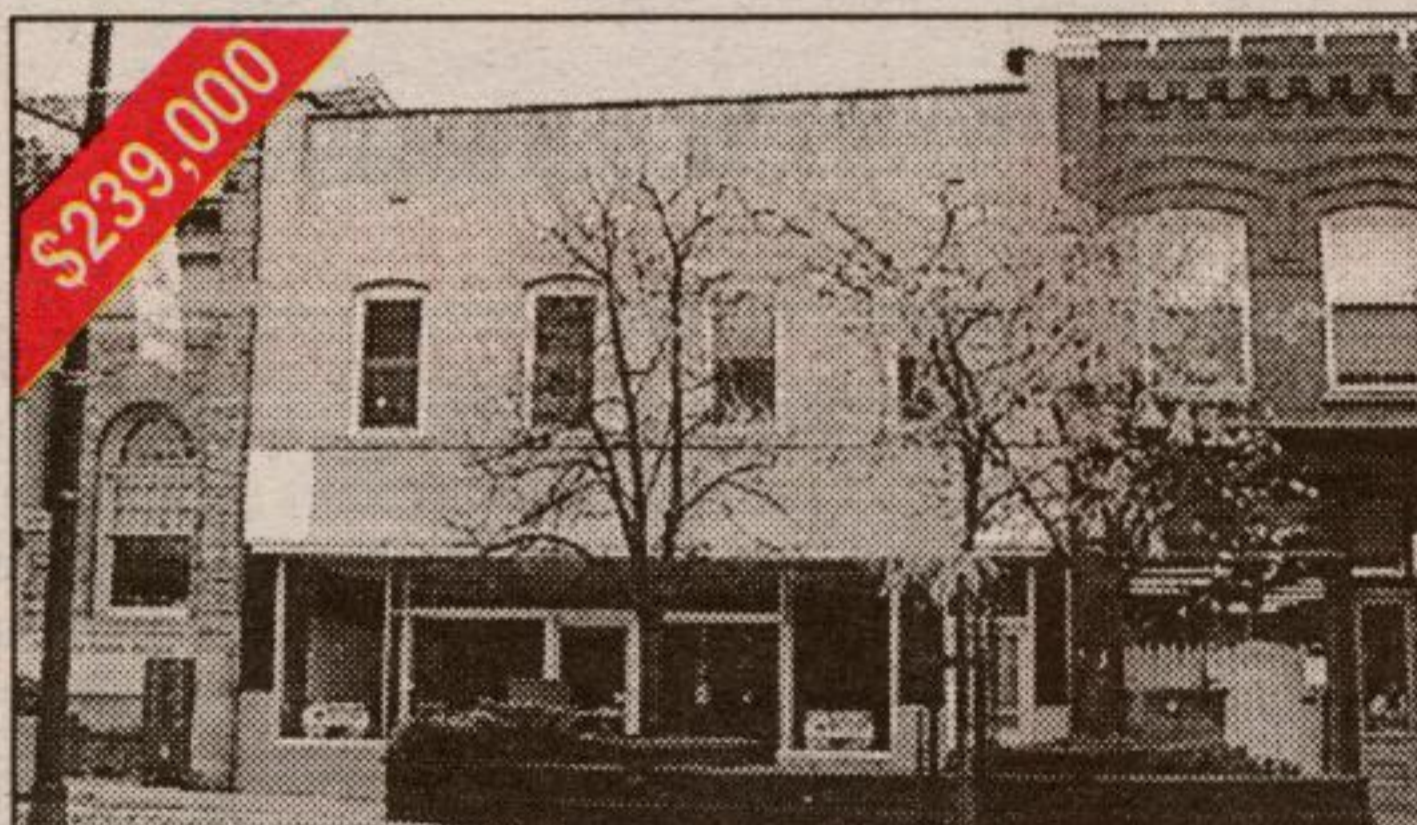
RM044-97

FOR RENT ... FOR LEASE ... FOR SALE!
Your choice of two excellent locations in Georgetown's main street business core!

OPPORTUNITY #1

2250 sq. ft. of C2 gen. comm. retail space with a smoke-free, open concept apartment above. For many more details, please call **Don Parker***.

RM357-96

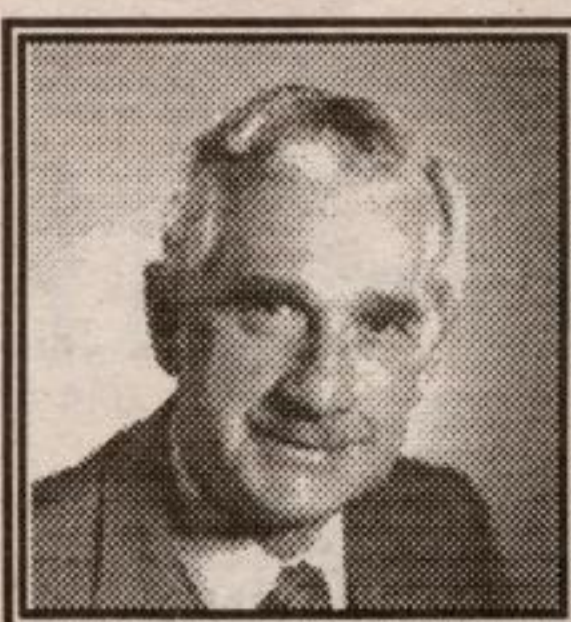


OPPORTUNITY #2

Approximately 1700 sq. ft. of C2 Gen. Commercial space with 2 bedroom apartments above. Further details from **Rud Whiting*** or **Don Parker***.

RM196-97

Excellent Service isn't expensive . . . it's priceless.



Don Parker* B.A. Sales Rep.
RE/MAX BLUE SPRINGS REALTY (Halton) CORP.

877-5211

LISTINGS NEEDED!! PLEASE GIVE ME A CALL!!

Not intended to solicit property already listed.



"Helping people find their perfect nest!"



DONNA ROBBINS

Sales Representative*

Call

877-0173

(24 Hr. Pager)

ROYAL LePAGE

Residential Real Estate Services Broker
Town & Country Properties Division
170 Guelph Street, Georgetown

I have purchasers looking for:

- 2 Bedroom Condo (Sands or Ascot)
- 4 Bedroom House on ravine (Georgetown)
- 50+ yr. old Brick Home (preferably in Acton)
- Country Home - Open Concept (Halton Hills/Rockwood area)
- 4 Bedroom, Country Kitchen (Rockwood area)
- Horse Farm / 6+ Stalls (Eramosa/Nassagaweya area)
- Country Home (between Georgetown and 401)

and Live Lovingly Don Parker Says: ...Drive Safely, Play Safely, Work Safely and Live Lovingly

and Live Lovingly Don Parker Says: ...Drive Safely, Play Safely, Work Safely and Live Lovingly

Don Parker Says: ...Drive Safely, Play Safely, Work Safely and Live Lovingly