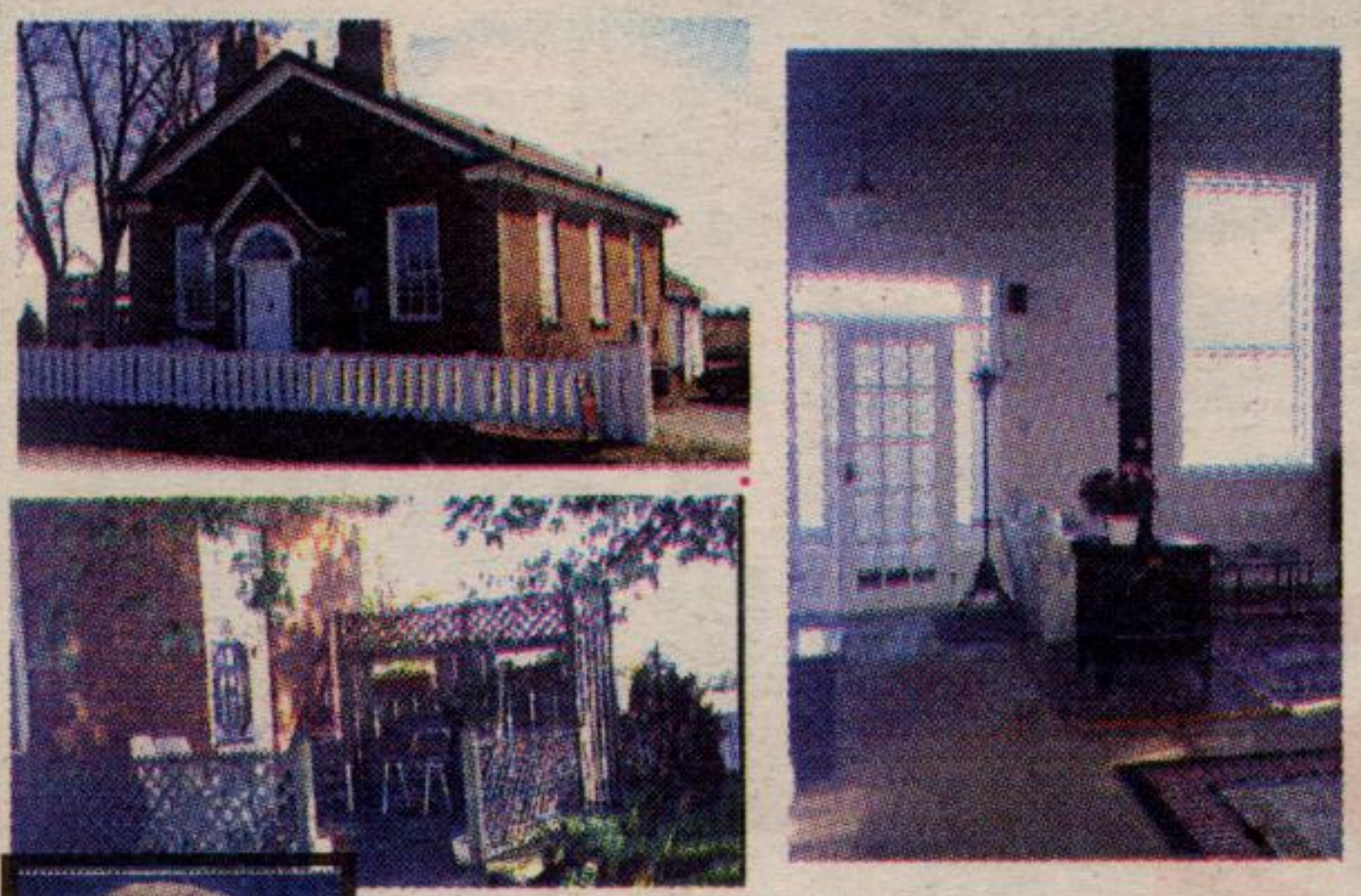


Real Estate & Classifieds Digest

HALTON COUNTY PUBLIC LIBRARIES
GEOURGE TOWN

Wednesday, April 16th, 1997
16 Pages

AN ADVERTISING SUPPLEMENT TO THE GEORGETOWN INDEPENDENT/ACTON FREE PRESS
SERVING GEORGETOWN, ACTON, ERIN, HILLSBURGH, ROCKWOOD AND SURROUNDING AREAS - 873-0301 - Publisher Ken Nugent



NOSTALGIC HALTON SCHOOLHOUSE

"Circa 1870" renovation with careful attention to preservation of the period flavour & nicely located on a paved road in rural Georgetown, backing onto farmland. The large open living & dining rooms are warmed by a freestanding woodstove and graced with 12 ft. ceilings - there's 2 baths, oak kitchen, wonderful private deck and a rear porch and garage area awaiting your personal renovating touch. Excellent value at \$209,900. Call Sandra Nairn*.

96-428-31



SANDRA NAIRN*

*Sales Rep.
(905)

877-5165

JOHNSON ASSOCIATES
HALTON LTD., REALTOR

247 Guelph St.,
Georgetown



WATCH THE SUNSET

Beautifully decorated condo on Hall Road, Georgetown for only \$121,500. Oak cupboards, ceramic backsplash in kitchen, mirrored sliding doors in hallway & bedroom. Includes window coverings, light & fan fixtures, fridge, stove, built-in dishwasher. Great buy for the empty-nester or first time buyers. Call Donna Robbins* for viewing.

13-29



DONNA ROBBINS*

*Sales Rep.
(905)

877-0173

ROYAL LEPAGE

Real Estate
Services Ltd.



NEW

\$399,000

PRESTIGIOUS 1916 STONE HOUSE IN "PARK AREA"

One of a kind on almost 1/2 acre! Outstanding features including special stone work, stunning woodwork, stone fireplaces and high ceilings. Formal main rooms with solid oak, walnut and cedar wainscoting, hardwood floors. Spacious rms, four + bdrms., mn. flr. family room and den. Kitchen is unique consisting of 3 rms, extensive oak cabinets and cedar wainscoting. Enclosed porch of yesteryear overlooking large fenced yard, mature trees and circular drive. Upgrades include furnace, air, Cvac, electricals and plumbing. \$399,000. Lynn Drewry*.

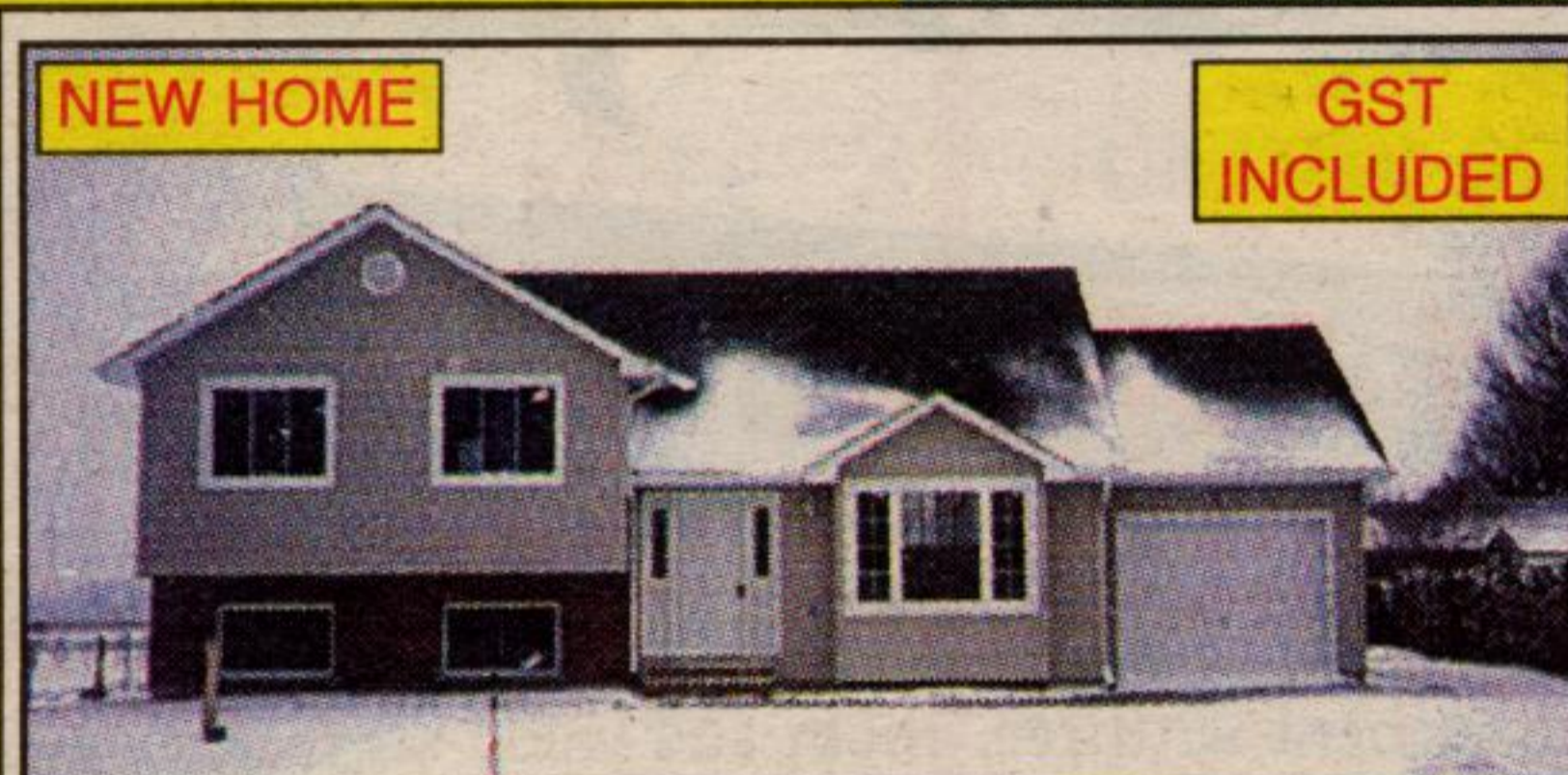
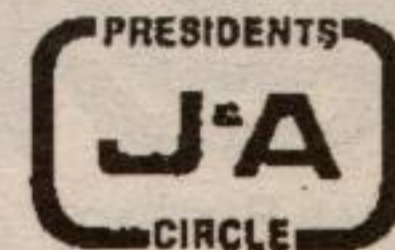


LYNN DREWRY*

*Sales Rep.
(905)

877-5165

JOHNSON ASSOCIATES
HALTON LTD., REALTOR



NEW HOME

GST INCLUDED

OPEN HOUSE

Sat., April 19th 1:00-4:00 p.m.

Sun., April 20th 1:00-4:00 p.m.

Directions: Trafalgar Rd. to Dufferin Rd. 3, left 1 mile.



ED BESSEY*

*Sales Rep.

1-800
930-4293

\$167,900

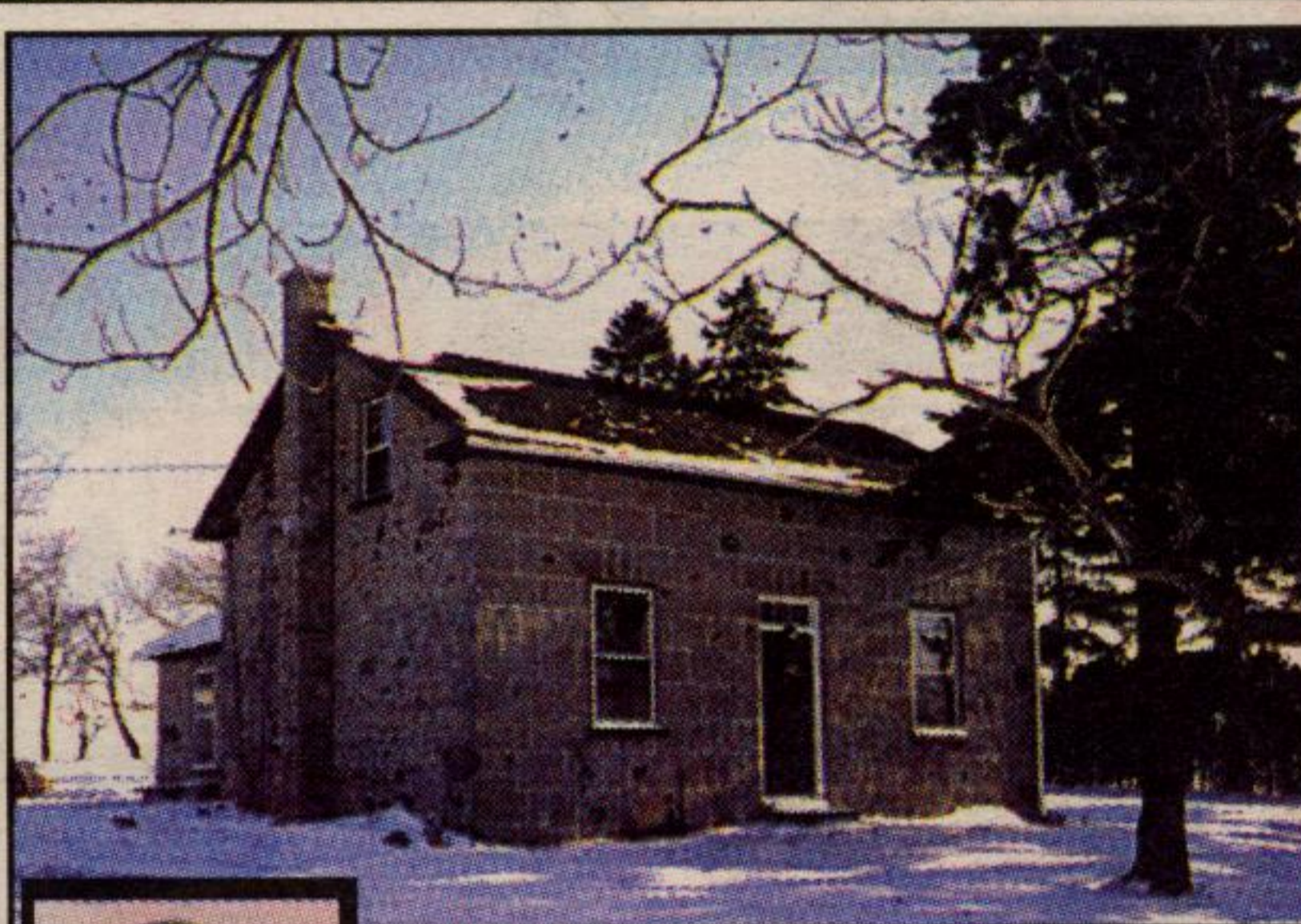
CHEAPER THAN RENT

With 10% down, this home could carry for as low as \$830.00 per month (P & I). New raised bungalow. Large eat-in oak kitchen overlooking sunken LR. 3 bedrooms up, 1 bdrm down. Master with ensuite. Large bright basement. Large laundry room. Kitchen with walkout to deck overlooking large backyard. Call Ed Bessey*. Pager #416-550-7299.

McE-447



McEnery Agencies
Ltd., Realtor



STONE HOUSE

94 ACRES

Unique opportunity of a charming stone cottage on rolling acreage, plus bank barn, other outbuildings, pond sites, south of Hwy. 9 and within an hour and a half drive of Toronto. A "now" place or, with some investment, a stunning property worth much more than presently asking. \$195,000.

RCR3787

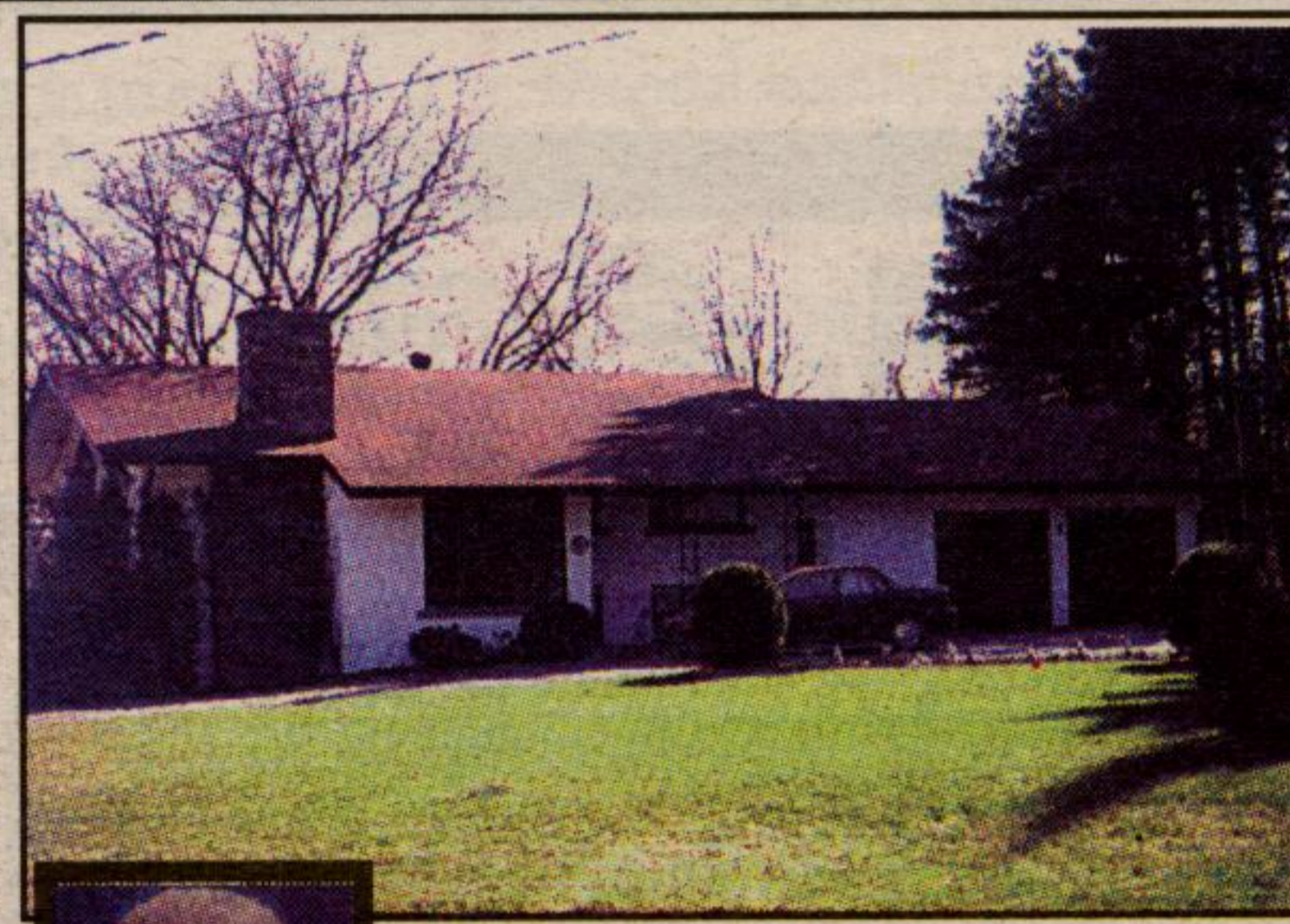


CULVER RILEY*

*Sales Rep.
(905)

450-3355

ROYAL CITY REALTY
(DUFFERIN) LIMITED



\$324,900

3/4 ACRE-CUSTOM HOME

Wooded ravine on prestige court in "the Park area". You'll love the comfort, spectacular view, privacy and southern exposure. A unique opportunity. Call Sandra Nairn* today.

97-134-30



SANDRA NAIRN*

*Sales Rep.
(905)

877-5165

JOHNSON ASSOCIATES
HALTON LTD., REALTOR

247 Guelph St.,
Georgetown

5 Models
Now Open

HOMES BEYOND THE ORDINARY

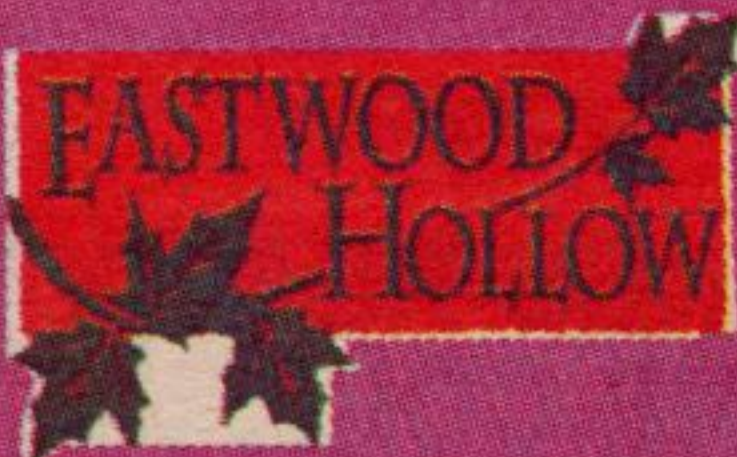
Detached Homes from the **\$130's**

For information and
appointment call Elizabeth

519 **824-3445**



CHOOSE YOUR NEW FULLY
DETACHED HOME FROM TWO
NEW LOCATIONS IN GUELPH.
FRIDGE AND STOVE INCLUDED.
ASK ABOUT OUR \$4,000.
EARLY CLOSING BONUS



The **EVERGREEN II**



Sales Office
Hours
144 Rickson Ave.,
Guelph

Sat., Sun. 12 - 5 pm
Tues., Thurs. 4 - 8 pm

Other times by appointment

