

Real Estate & Classifieds Digest

Wednesday, April 9th, 1997

16 Pages

HALTON HILLS PRESIDENTS' ASSOCIATION
GEORGETOWN

AN ADVERTISING SUPPLEMENT TO THE GEORGETOWN INDEPENDENT/ACTON FREE PRESS
SERVING GEORGETOWN, ACTON, ERIN, HILLSBURGH, ROCKWOOD AND SURROUNDING AREAS - 873-0301 - Publisher Ken Nugent



CATHY BUCKRELL
*Sales Rep

(905)

874-3086

\$995,000

93 ACS., HORSE FARM BALLINAFAD

Renovated 3 storey Canadiana, indoor arena, custom box stalls, fenced paddocks, 2 large ponds, stream, hardwood bush, buildings like new, beautifully maintained. CBC 12

ROYAL LEPAGE CHELTENHAM



BETTY MCKEND*

*Sales Rep.

(905)

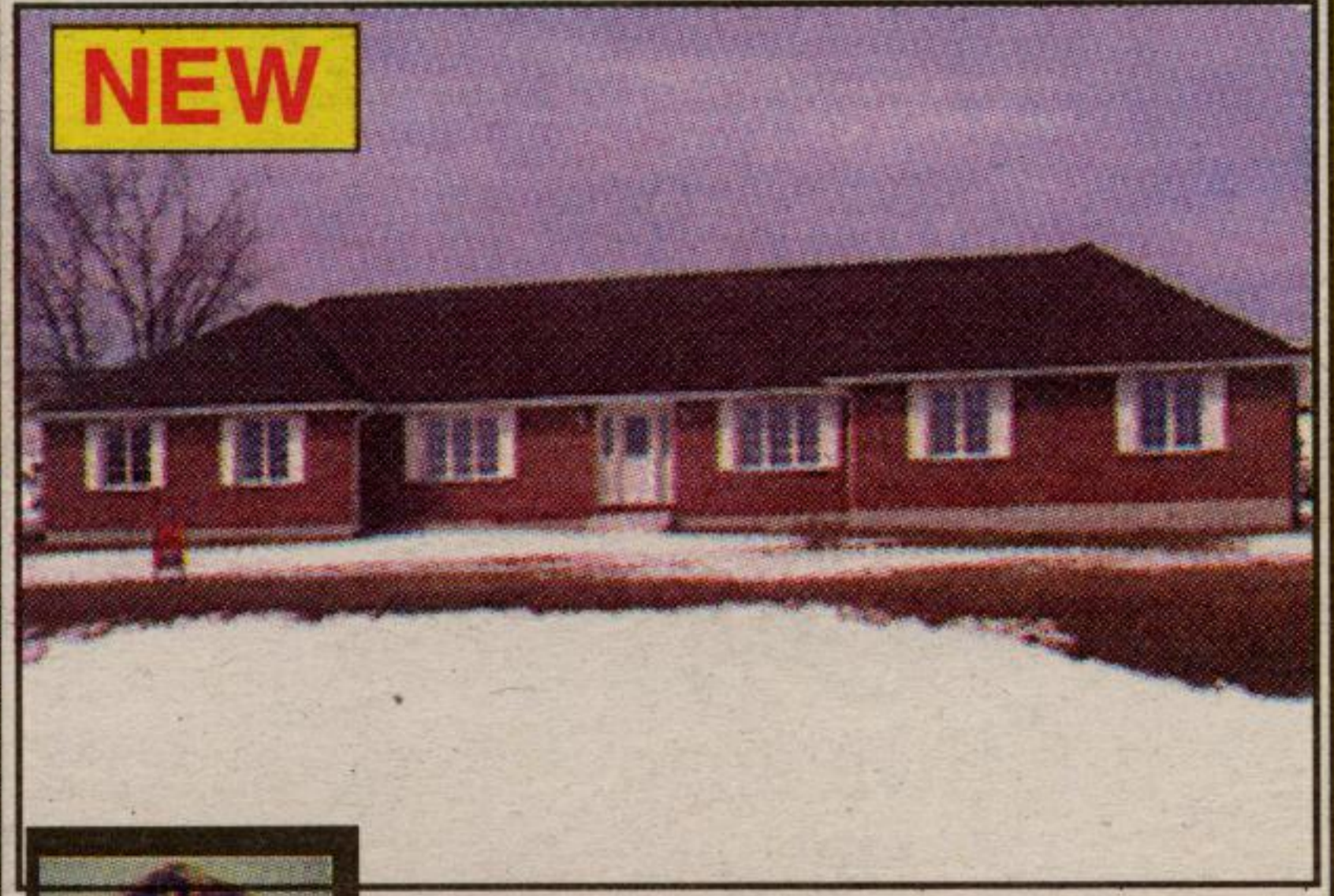
873-0173

WONDERFUL EDEN MILLS

Spring is bursting in this pretty village setting, lots of room in this 4 bedroom Executive home with main floor family room with fireplace, eat-in kitchen, master bedroom with ensuite & walkout to deck. Large M.F. room suit a home office, crafts, play room, etc. Full basement with exits. Mega deck for summer entertaining. A true 10+++! \$297,000. Call Betty McKend*. 32-70

ROYAL LEPAGE

REAL ESTATE SERVICES LTD., REALTOR



LYNN DREWRY*

*Sales Rep.

(905)

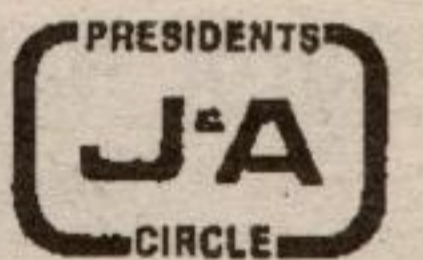
877-5165

\$299,000

HIGHLANDS OF HILLSBURGH

Spectacular 3 bedroom executive custom bungalow. Quality built 2,000 sq. ft. main + 2,000 sq. ft. basement, 2 years new on magnificent 1.7 acres with stocked pond, bridge and two storey playhouse. Thousands spent on upgrades and landscaping. Open concept kitchen with centre island, greenhouse breakfast area, family room with gas fireplace all overlooking pond and beautiful acreage. French doors and hardwood floors in formal separate living room/dining room. Oversized double garage and second fireplace in basement. Absolute must for discerning buyer! AJ97-216-90

JOHNSON ASSOCIATES HALTON LTD., REALTOR



BILL MCKEOWN**

**Assoc. Broker

(905)

877-5211

EASY LIVING BUNGALOW

\$209,900

3 bedroom bungalow on an in town fenced lot, formal entrance with ceramics, French doors with beveled glass leading to formal living room with gas fireplace, oak kitchen with greenhouse eating area, easy care hardwood floors, 2 pc. ensuite, and much more. RM147-97

RE/MAX

BLUE SPRINGS REALTY (Halton) CORP.



ELIZABETH DOELL*

*Sales Rep.

(905)

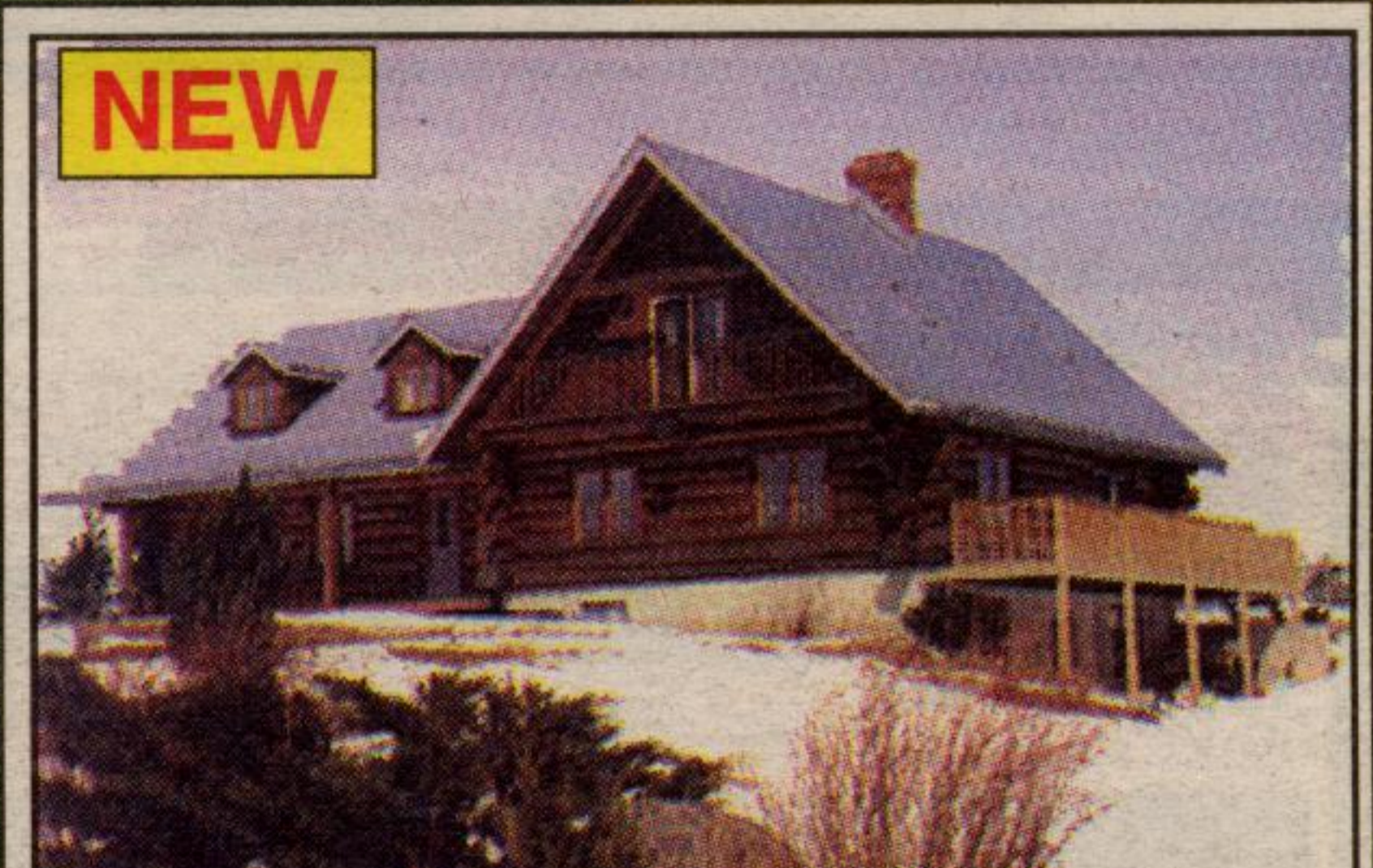
877-5165

VENDOR SAYS... SELL IT! AND WHY NOT?

Raised bungalow is waiting for a new family to move in and enjoy all the amenities in this terrific neighbourhood. Elegant kitchen, 5 appliances, fireplace, and inground pool too! Call today before it's sold. AJ97-148-90

JOHNSON ASSOCIATES HALTON LTD., REALTOR

247 Guelph St., Georgetown



MARTHA SUMMERS*

*Sales Rep.

(905)

877-5165

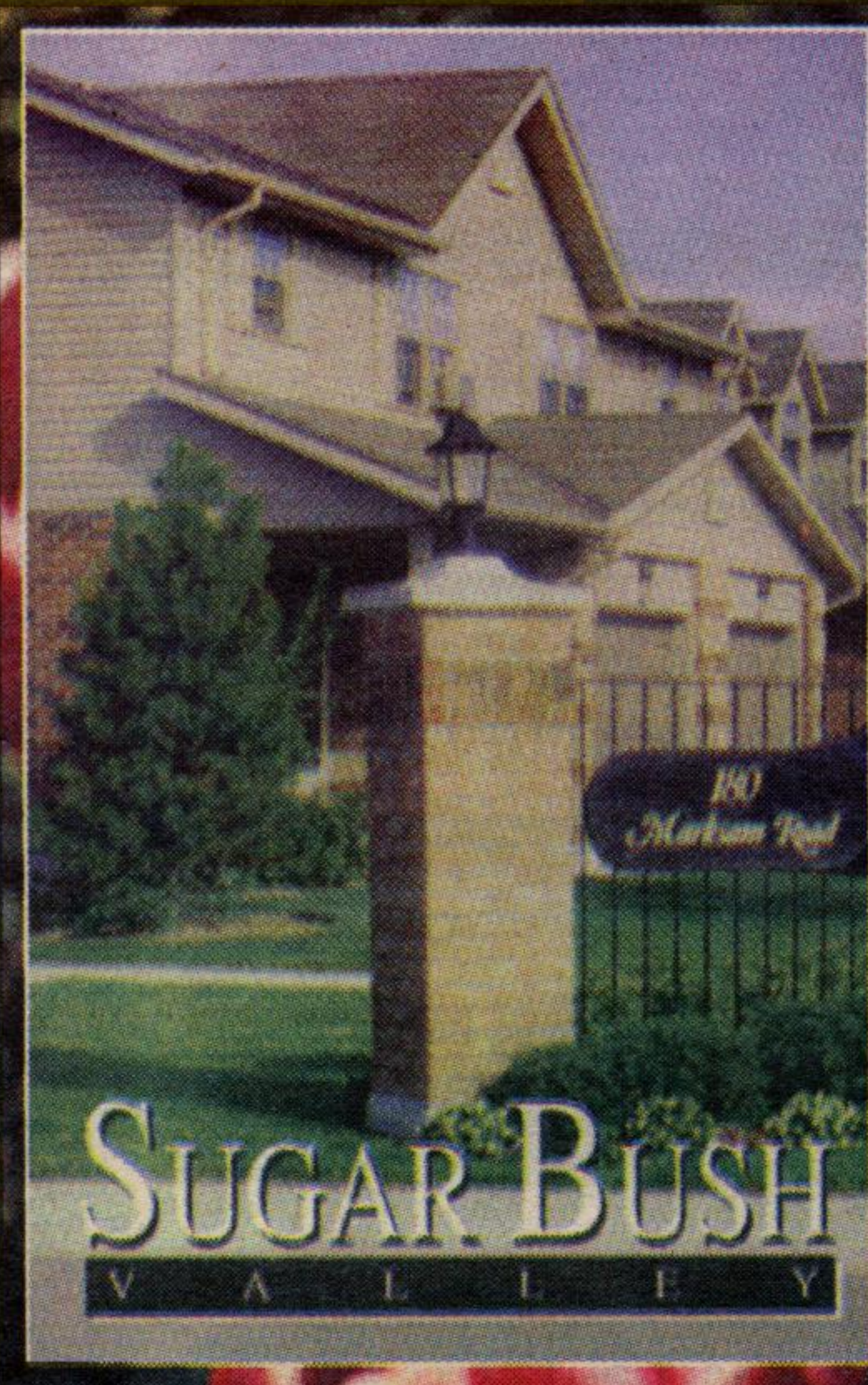
\$379,000

LOOK AT THOSE LOGS!!

Approx. 3500 sq. ft. of quality plus a full finished lower level at walkout. 36 x 28 ft. living room/dining room with double sided brick fireplace and maple floors and walkout to large deck overlooking surrounding countryside. Large oak kitchen with ceramics, master bedroom with fireplace and walkout to balcony. One of a kind on a 1.43 acres. Martha Summers*.

JOHNSON ASSOCIATES HALTON LTD., REALTOR

247 Guelph St., Georgetown



TOWNHOMES

READY FOR OCCUPANCY

priced from **\$98,400**

Stop renting and start owning from as little as

\$665 per month P+I



Sales Office Hours - 180 Marksam Rd., Guelph
Mon.-Thurs. 10-7 pm, Fri.-Sat. 10-5 pm
or call 519-767-0404

