

Acton Legion hosts a dance

The Elimination Draw and Dance will be held this Saturday, April 12. The main prize is \$1,000. Tickets are available from the steward at the bar for \$5 each.

April 3 euchre winners: Gary Sutton, 88, Bev Ella, Marg Wilson, Eva Roberts and Joe Holland all with 72,

Pearl Baker, 70. Hidden score: Verna Ella. Meat Draw winners: Early Bird: Betty Leisch and John Ramsbottom. Regular winners: Ed Molody (2), Glen Hillier, Carl Fisker, Dave Mullett, Peter Turkosz, Gail Jarrett, Pat McCutcheon, Bradley Jordan, Harry Looyenga, Ken Tarzwell, and Bonnie Townsley.

Spring Fever to be here soon

By BETTY SOJKA
Ballinafad news

Tickets for the April 19 Spring Fever Dance are just \$10 and still available at the Ballinafad General Store. Marion's Country Band will be providing the music and there will be door and spot prizes to be won. A light lunch will be served. Doors at the Community Centre open at 9 p.m. and close at 1 a.m.

A special service was held at the United Church on Sunday, April 5, when the congregation dedicated their new hymn books that were recently purchased by the United Church of Canada.

Forty-four people turned out for the April 3 euchre. Winners were: High Lady, Elsie Swan, 92, High Gent, Jim Bailey, 94, Low Lady, Joyce Golder, 55, Low Gent, Chuck Drysdale, 63, and there was a tie for Lone Hands between Marilyn Rasmussen and Joe Primus. Everyone enjoyed the assortment of desserts and sandwiches. The next euchre will be on April 17, 7:30 p.m. All welcome.

TV & VCR REPAIRS

All models, also Microwaves, Stereos & Cameras.

RCA 873-1820



J.J. ELECTRONICS

360 Guelph St., #47, Georgetown

TAX TALK

A PUBLIC SERVICE OF H&R BLOCK

Q. I started a sideline business on July 1, 1996. Must I report the income from this business on my 1996 return?

A. Not necessarily. Although all self-employed income earned by individuals must ordinarily be reported on a calendar-year basis, it is still possible to defer the six-month's worth of business income you earned in the startup year for one year, but only at the expense of declaring 18-month's worth of income in 1997! Whether this is worthwhile or not depends on your income levels for the two years. It is no longer possible to defer taxes on a permanent basis by choosing a fiscal year that does not coincide with the calendar year.

130 Guelph St. 56 Mill St. East
Georgetown Acton
(905) 873-7855 (519) 853-5612

Learn about our Iroquoian heritage Saturday

The Norval area is rich in archaeological discoveries of the Iroquoian speaking people and many of these collections will be on display for the first time, this Saturday, April 12 at the Norval Heritage Society's seminar on Iroquois on the Upper Credit

River. Keynote speaker is "controversial, but not dull" Dr. William Finlayson, director general of London Museum of Archeology and University of Western Ontario professor. He and speakers, Heather Broadbent, a Caledon Heritage Resource Officer and Chris

Anderson, a Ontario government staff archeologist will identify and date artifacts attendees bring.

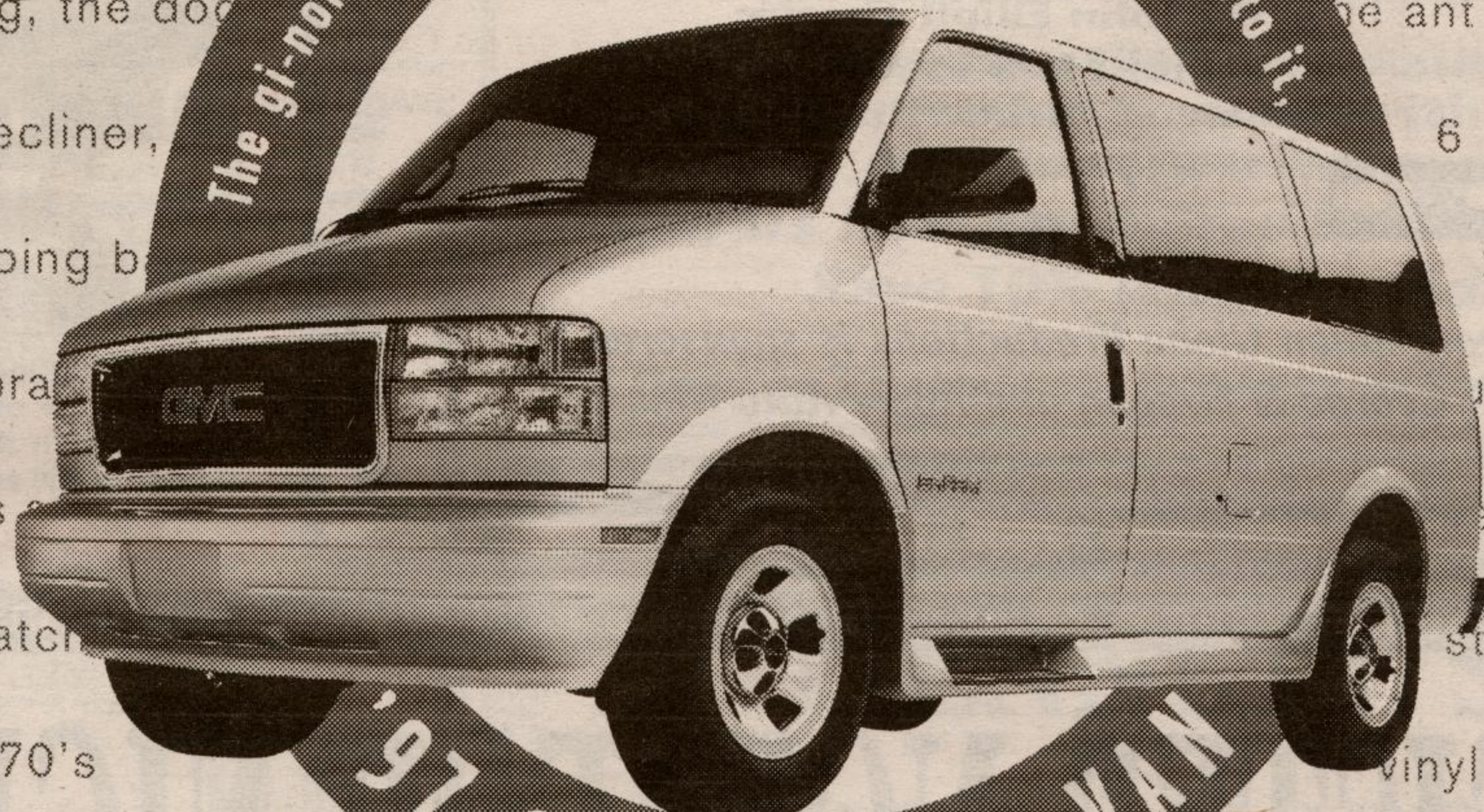
The seminar will be held 1:30 p.m. at the Croatian Cultural Centre, 9118 Winston Churchill Blvd. at Embleton Rd. Admission, \$10 or \$20 per family.

IF IT CARRIED ANY MORE

PASSENGERS OR CARGO,

IT WOULD COME WITH WINGS.

GRAM it, JAM it, STUFF it full of: 4x8 sheets of plywood, PVC piping for an un assembled toilet, 7 futon, a Guide troop with 40 dozen boxes of cool chocolate ones are missing, the dog the ant farm, the easy recliner, 6 man tent, 4 sleeping b 2 cans of bug sprai ur mother-in-laws een fridge and match stove, your Dad's 70's vinyl sofa, the entire contents of your friend's apartment,



Now available at an unbelievable low price including running boards.

\$20,938[†]
(excludes freight \$845)

190 HP Vortec 4300 V6 engine, rear wheel drive, 4-speed automatic transmission, 4-wheel ABS, dual air bags, side-guard door beams, 5500 lb. towing capacity, deep tinted glass, 8-passenger seating, air conditioning, AM/FM stereo cassette, deluxe chrome grille.

\$228^{*}
(36 months/\$2,150 down)

You Should Know This: *Based on a 36 month lease for 1997 GMC Safari Van ISA equipped as described. A minimum down payment of \$2,150 and \$300 security deposit are required. Annual kilometre limit: 20,000 km. \$0.08 per excess kilometre. **Freight \$845, licence, insurance and taxes are not included. Offer applies to 1997 new or demonstrator models. Dealer order or trade may be necessary. Dealer may sell/lease for less. Offer applies to qualified retail customers only. Limited time offer may not be combined or used with other offers. OAC. See your Central Ontario Pontiac Buick GMC Dealer for details. **TD and GM are licensed users of Marks.



Don't forget to use your GM card earnings toward the purchase or lease down payment of your next GM vehicle.**

What's your card done for you lately?

SMARTLEASE
You could get lower monthly payments on any GM car or truck, call **1-800-32 SMART**

GET WHAT YOU WANT FROM YOUR GMC TRUCK DEALERS.

