

CHRYSLER

\$500**
Holiday Bonus
ON TOP
OF EXISTING
DEALS

Twas the holiday season
 And as folks
 ran amok

*

Chrysler dealers
 were giving back
 Five hundred bucks

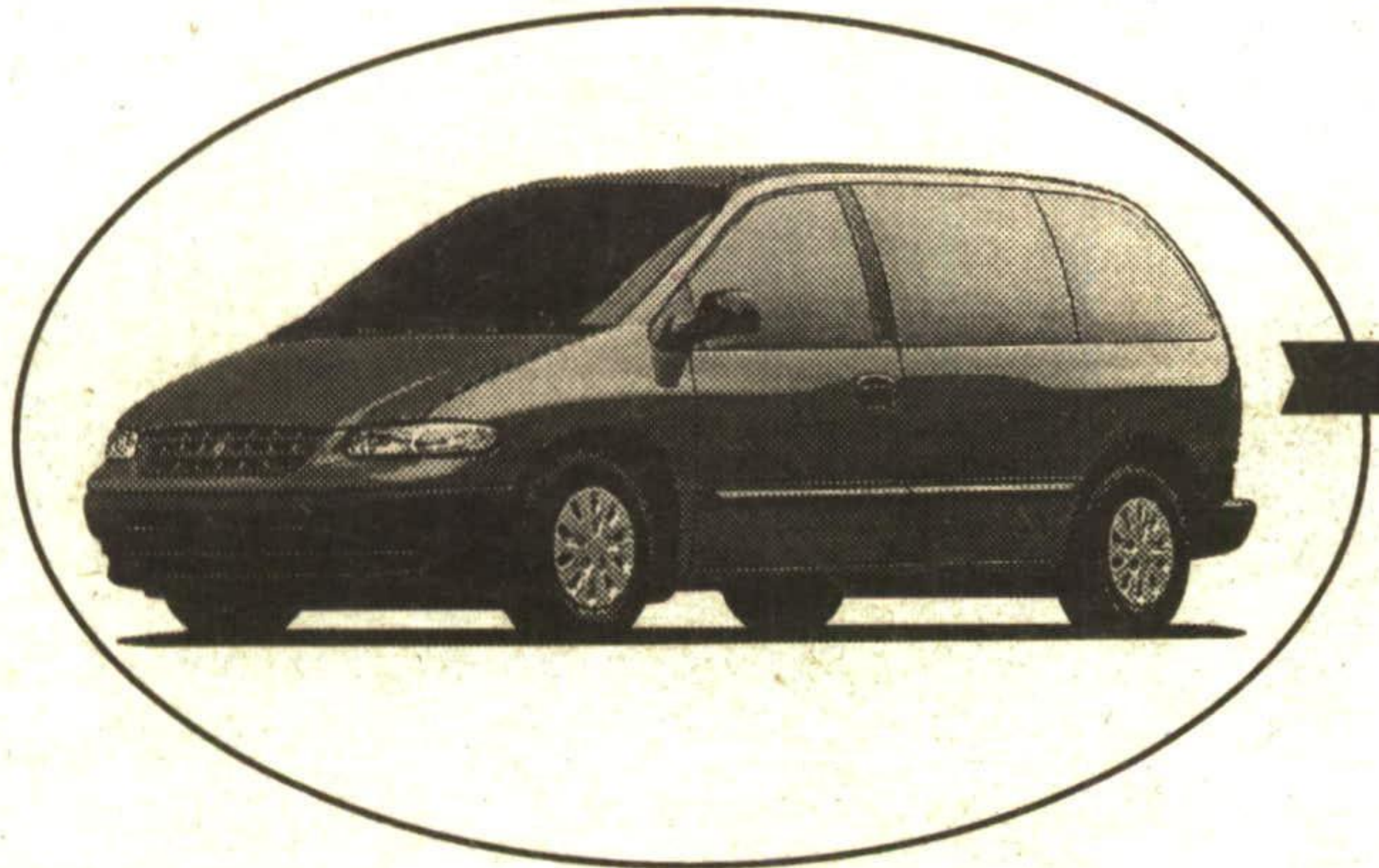
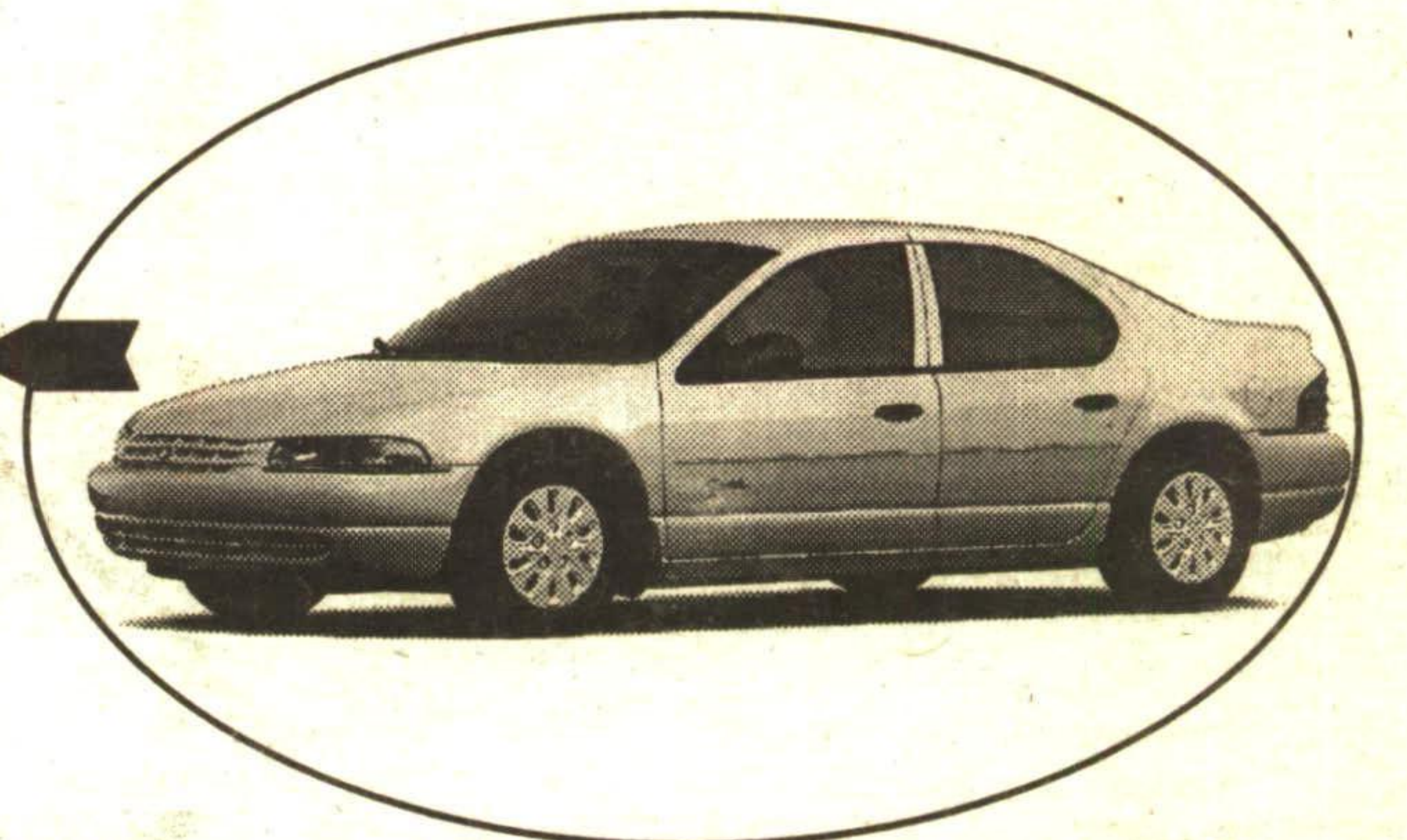
*

On Chrysler
 on Plymouth
 on Jeep
 and on Eagle

*

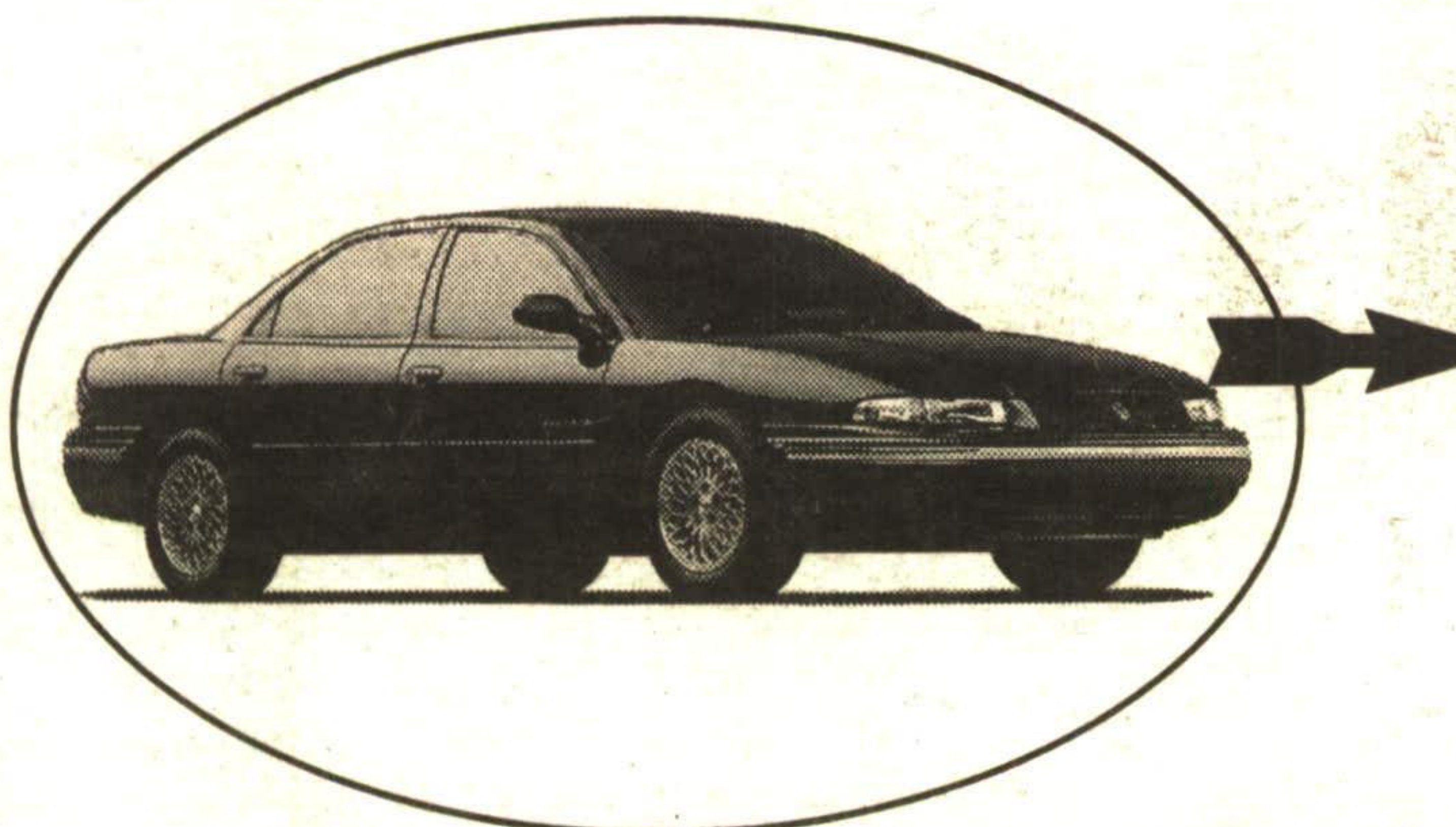
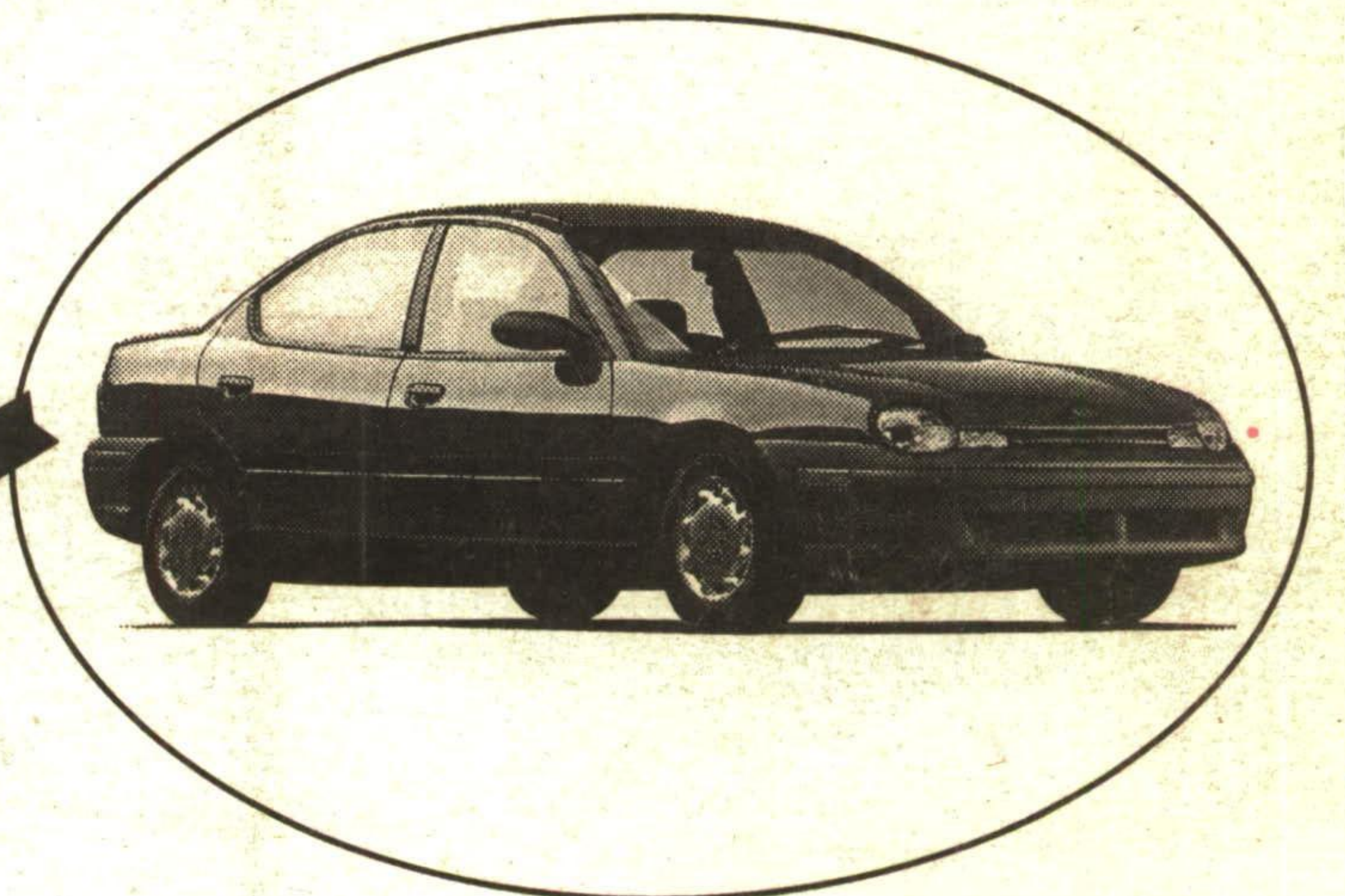
On Dodge and
 Dodge Trucks...
 Won't you please
 read our Legals?

'97 Dodge Stratus/Plymouth Breeze
 CURRENT REBATE **\$500****
 BONUS DAYS REBATE **\$500***
TOTAL REBATE \$1000



'97 Dodge Caravan/Plymouth Voyager
 BONUS DAYS REBATE **\$500***

'97 Neon
 CURRENT REBATE **\$750****
 BONUS DAYS REBATE **\$500***
TOTAL REBATE \$1250



'97 Chrysler Intrepid
 CURRENT REBATE **\$1000****
 BONUS DAYS REBATE **\$500***
TOTAL REBATE \$1500

'97 Jeep Grand Cherokee
 BONUS DAYS REBATE **\$500***



In addition to the \$500* Holiday Bonus Rebate, receive financing as low as **1.9%¹** or the Current Rebate** available on selected models.

Get an extra \$500* rebate on top of existing deals on all '96 and '97 models*. See your Local Chrysler or Jeep/Eagle dealer. Holiday hours and dates may vary.

+Current rebates in place on most of our 1996/97 inventory. *Rebate available in addition to all Current Rebates on retail purchases of all in stock 1996 and 1997 models. Rebate assigned to dealer from Chrysler Canada Ltd. Rebate includes G.S.T. Delivery must be taken by January 4, 1997. **Rebate assigned to Dealer in lieu of other offers from Chrysler Canada Ltd. Rebate includes G.S.T. †1.9% financing available on all 1996 Neon models. Financing starting at 2.9% on 1996 and 4.9% on 1997 selected models. Offers are mutually exclusive and for personal use only. Financing only on approval from Chrysler Credit Canada Ltd. Chrysler Canada will make available low financing up to 48 months on selected 1996 and 1997 model passenger cars and trucks. Example on 1996 Neon Highline/Sport: \$10,000 at 1.9% APR/48 month term. The monthly payment is \$216.52. Cost of borrowing is \$392.96. Total obligations \$10,392.96. With rebate taken (\$1,250), the effective interest rate is 8.70%, the cost of borrowing is \$1,642.96; total obligation is \$11,642.96. Licence, insurance, registration and taxes extra. Limited time offers. See Dealer for details. ©Jeep is a registered trademark of Chrysler Corporation.

GEORGETOWN CHRYSLER JEEP (1993) LTD.
 336 GUELPH ST., GEORGETOWN
877-0149 877-5108 TOR. 874-4277