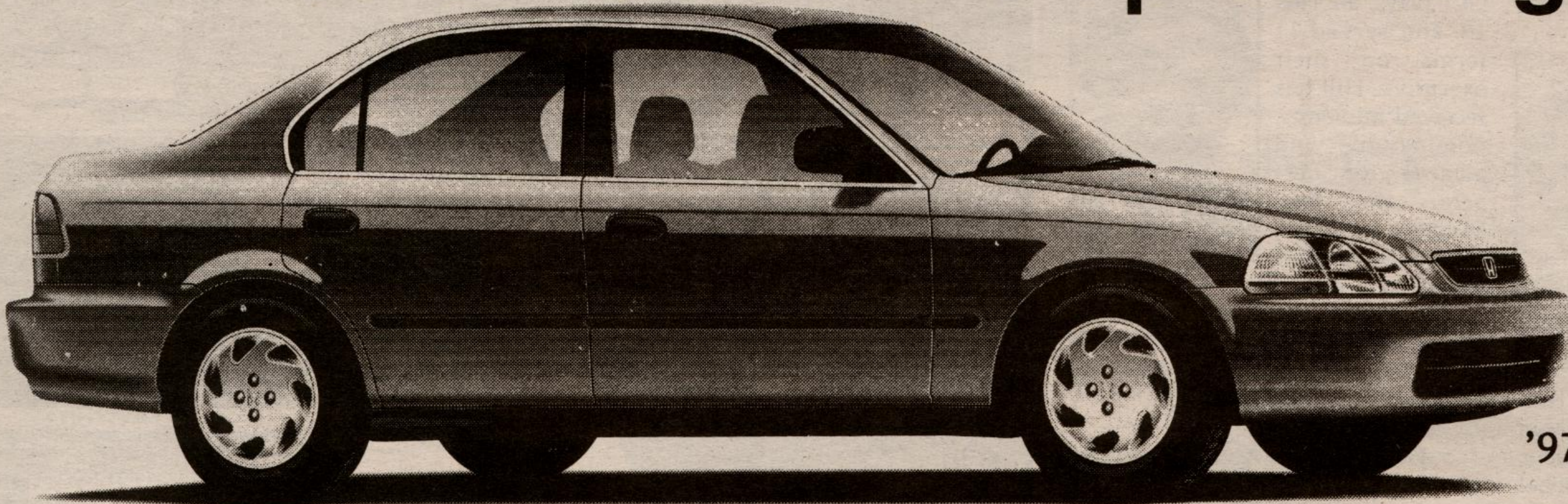


'97 Civic Leadership Leasing.



'97 CIVIC SEDAN EX

'97 CIVIC SEDAN LX LEASE

\$208* per month for 48 months

DOWN PAYMENT \$845. MSRP \$15,395*

Dual Airbags (SRS) • 5-Speed Manual Transmission • 4-Wheel Independent Double-Wishbone Suspension • AM/FM Electronically Tuned Stereo with 4 Speakers • Power Steering • Power Brakes • Tilt Steering • 60/40 Fold-Down Rear Seatback • Remote Trunk Release • Body Side Mouldings • Dual Remote Mirrors • 14" All-Season Tires with Full Wheel Covers.

'97 CIVIC SEDAN EX LEASE

\$268* per month for 48 months

DOWN PAYMENT \$845. MSRP \$19,395*

Civic Sedan EX includes all Civic Sedan LX features plus: Special Group Option Package (Anti-Lock Braking System (ABS) and CFC-Free Air Conditioning • Automatic Transmission • Front Stabilizer Bar • Cruise Control, Power Windows, Door Locks and Side Mirrors • Tachometer • Centre Console with storage & armrest • AM/FM Stereo Cassette with 4 Speakers

LIMITED TIME OFFER

ZERO Down Payment Plans also available.



GEORGETOWN HONDA

203 Guelph Street, Georgetown 873-1818

SALES • LEASING • SERVICE • PARTS • BODY SHOP

BUILT WITHOUT COMPROMISE.



Lease available only through Honda Canada Finance Inc. Based on a new 1997 Civic Sedan LX (model EJ653V)/Civic Sedan EX (model EJ668V), \$208/\$268 per month for 48 months (total lease obligation of \$9,984/\$12,864). Down payment or equivalent of \$845/\$845 required plus first monthly payment and security deposit (\$250/\$325). Zero down payment plans also available. 96,000 km allowance (10¢/km exceeding 96,000 km applies), O.A.C., freight and P.D.I. (\$750), taxes, license and insurance extra. Option to purchase at lease end for \$8,313.30/\$10,473.30 plus taxes. Dealer may lease for less. *Freight and P.D.I. (\$750), taxes, insurance and license are not included. Dealer may sell for less. See your Honda Dealer for more details.

At **APPLE AUTO GLASS**

WE'LL BE AROUND ALL YEAR (and have been for 13 years!)



... Check with your Insurance agent before you spend their money!

We Pay Your \$50.00 Deductible

See the experts!



354 Guelph St.
Unit #27
Georgetown
873-1655