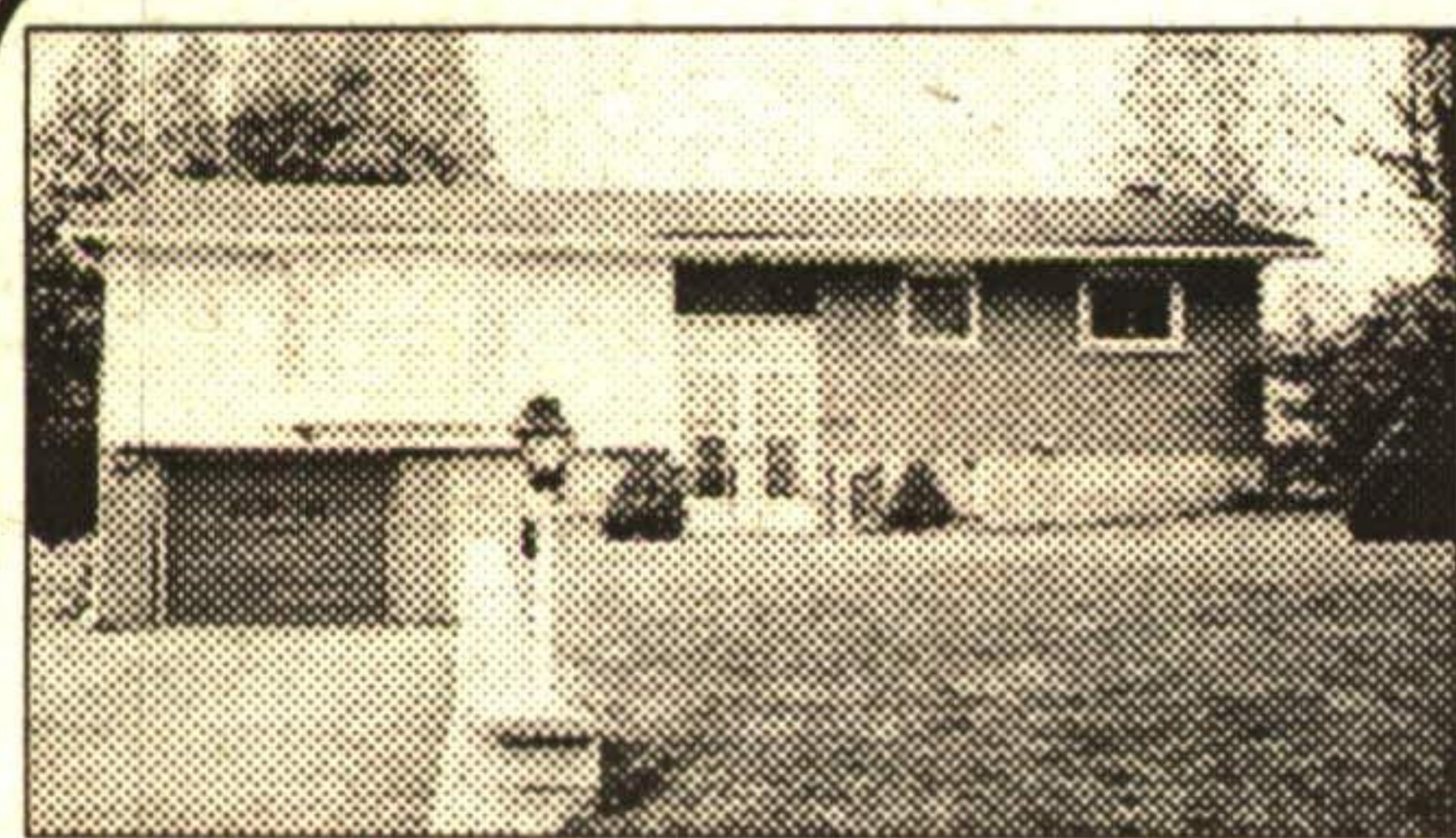


# Say You Saw It In

**The Independent**  
Weekend Edition & Free Press

**Real Estate Digest**



## LAND! LOTS OF LAND!

- 2.6 acre building lot in Erin. \$97,900. 32-53
- 13.4 acres with barn in Rockwood. \$199,000. 32.61
- 3.5 acres, 2 road fronts in Rockwood. \$179,000. 32.62
- Commercial lot in Rockwood. \$109,000. 32-63
- Commercial corner lot in Rockwood. \$119,000. 32.64

To view call Betty McKend\*

**OPEN HOUSE**  
SUNDAY JULY 7TH 2-4 PM

112 Frederick Street, Rockwood

Excellent 3 bedroom home with sparkling inground pool and steel workshop for the hobbyist. Hosted by Betty McKend\*. 32-66

**BETTY MCKEND\***

Sales Rep.

**877-0173**



**ROYAL LEPAGE**

170 Guelph St.,  
Georgetown

**COLDWELL BANKER**

**877-9500**  
Metro  
**453-2900**

**COLDWELL BANKER**

FIRST HALTON REALTY

106 Guelph St., Georgetown



**John Clark**  
Associate Broker\*\*  
877-9500



**Kathleen Dobbie**  
Sales Rep.\*  
Res. 877-7393



**Barbara Glenn\***  
Sales Rep\*  
(519) 853-0923



**Lynn Blackburn\***  
Sales Rep\*  
877-9500



**Irene Pries\*\***  
Associate Broker\*\*  
877-9500



**Joanne Vranic\***  
Sales Rep\*  
519-853-0336

## RELOCATION SPECIALISTS

Each member of our sales staff has been designated as a "Certified Residential Referral Specialist" by Coldwell Banker University\*. Each member completed a course of study on Family Relocation and successfully completed a qualifying examination.

The course of study covered every facet of Relocation from start to finish.

If you are planning a Relocation, why not call one of our specialists and let them smooth the way for you?

"Only at COLDWELL BANKER"



**Bill Ellis**  
Broker\*\*  
Res. 877-7528



NEW

Not exactly as shown.

### TRADITIONAL BELFOUNTAIN

This lovely new home features double staircase and butler's pantry. Quality built at \$279,900. Call Bill Ellis\*\* 877-9500. CB0005



NEW

Not exactly as shown.

### COME TO BELFOUNTAIN

This stunning home to be built on wooded country lot in Erin. You choose the finishes from builder's samples. Builder's price. \$329,000. Discuss with Bill Ellis\*\* 877-9500. CB0004



Not exactly as shown.

### ONLY ONE TO BE BUILT

Fantastic Opportunity! Brand new. Top quality. Country lot., 1550 sq. ft. Extra bath, huge master, main floor laundry. Only \$169,900. Call exclusive agent Bill Ellis\*\*, 877-9500. CB0008



Not exactly as shown.

### ONLY SPECTACULAR

This stunning home to be built on wooded country lot in Erin. You choose the finishes from builder's samples. Builder's price. \$329,000. Discuss with Bill Ellis\*\* 877-9500. CB0003



Not exactly as shown.

### CAPE COD CHARMER

Construction has started on this lovely new home on half acre treed lot in Belfountain. Features four bedrooms, main floor family room and office. Top quality construction and finish by Ricciuto Custom Homes. \$259,900. Call Bill Ellis\*\* 877-9500. CB0009



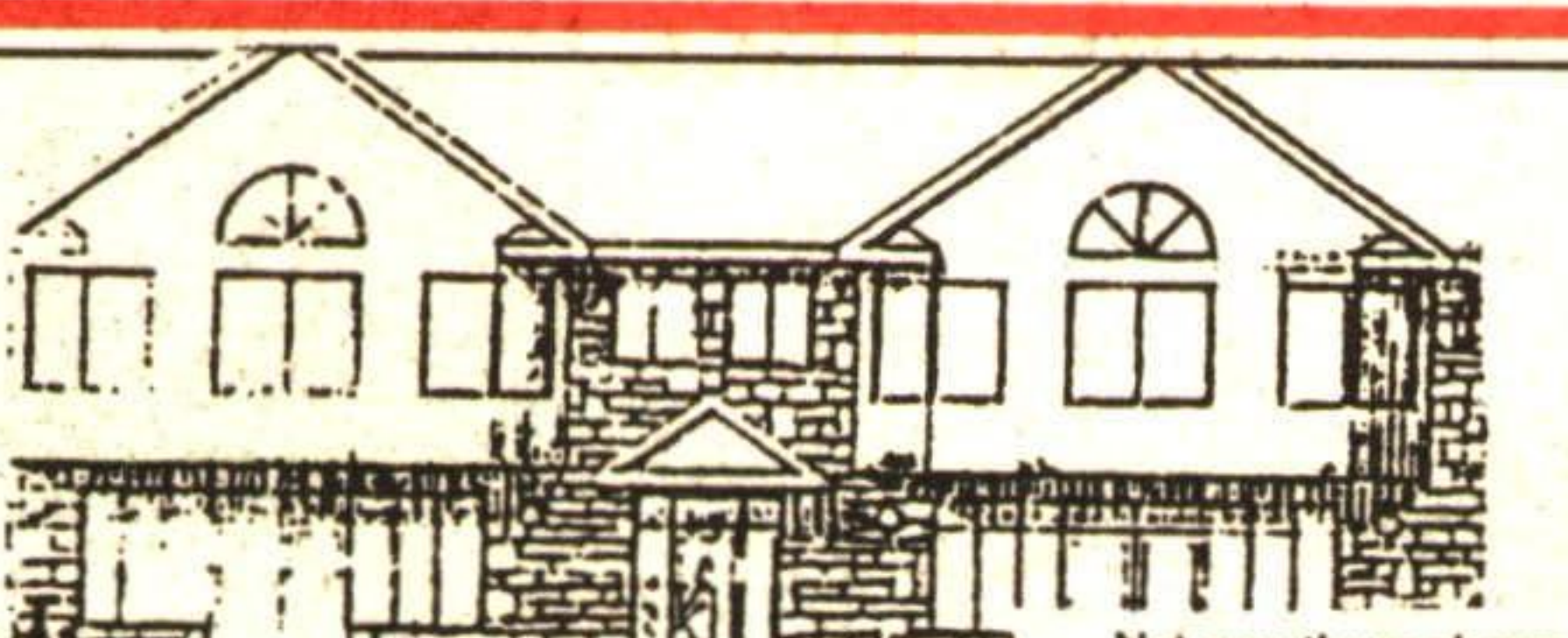
### HIGHWAY SERVICE CENTRE

High exposure highway commercial with living quarters. Presently operated as Auto Repair, Gas Bar & Variety. Vendor is retiring. Asking \$299,000. Details from Bill Ellis\*\* 877-9500. CB1207



### STONEBARN ESTATES GEM

Rockwood's prime neighbourhood boasts a very private, treed ravine lot and this special home with every amenity for the good life. Offered at \$399,000. Call Bill Ellis\*\* to inspect. 877-9500. CB1194

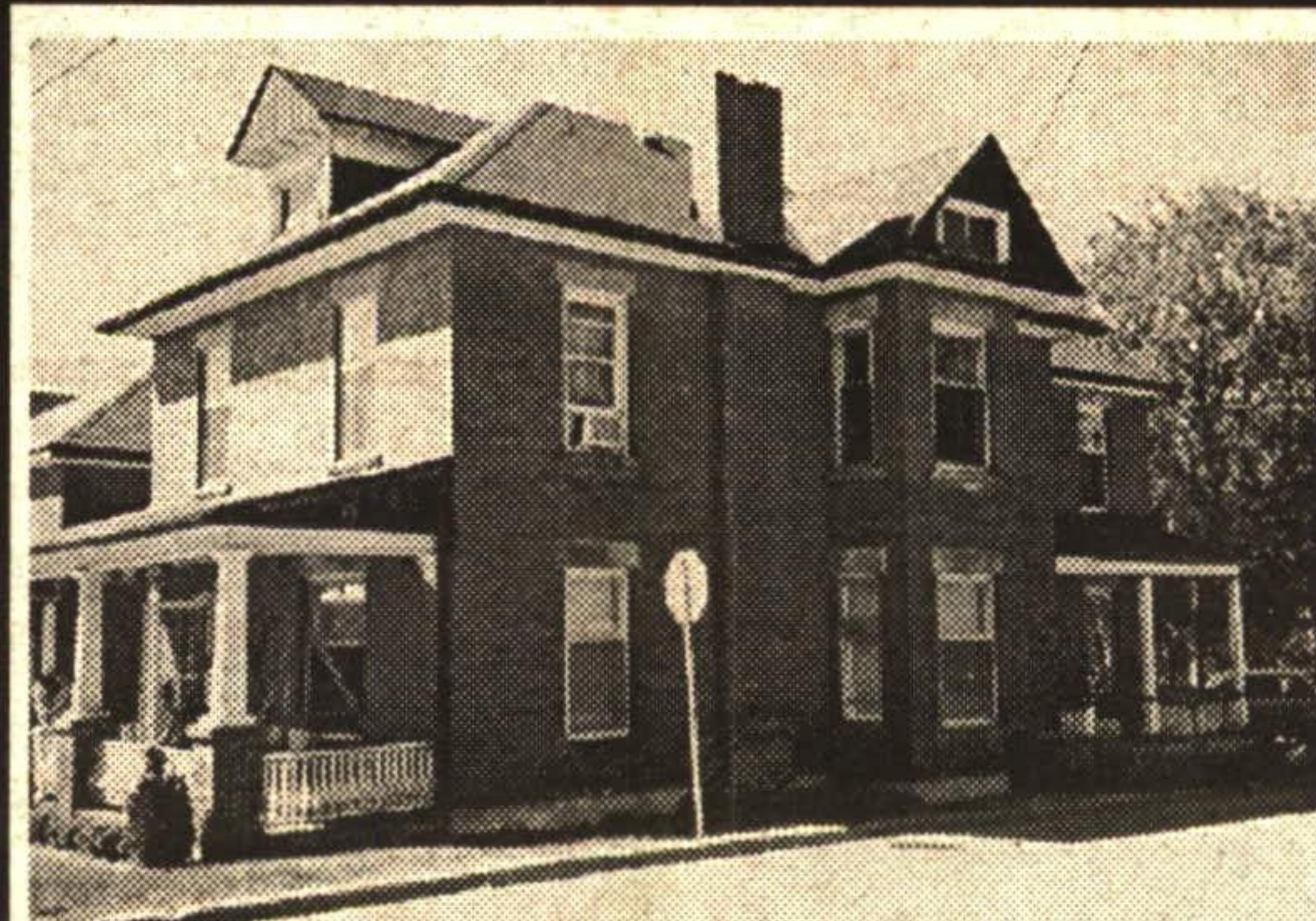


Not exactly as shown.

### CLASSY COMMERCIAL

To be built on Guelph Street. Two 1500 sq. ft. units for offices or commercial. Also two executive apartment suites up. Very nice. Call Bill Ellis\*\* 877-9500. CB0001

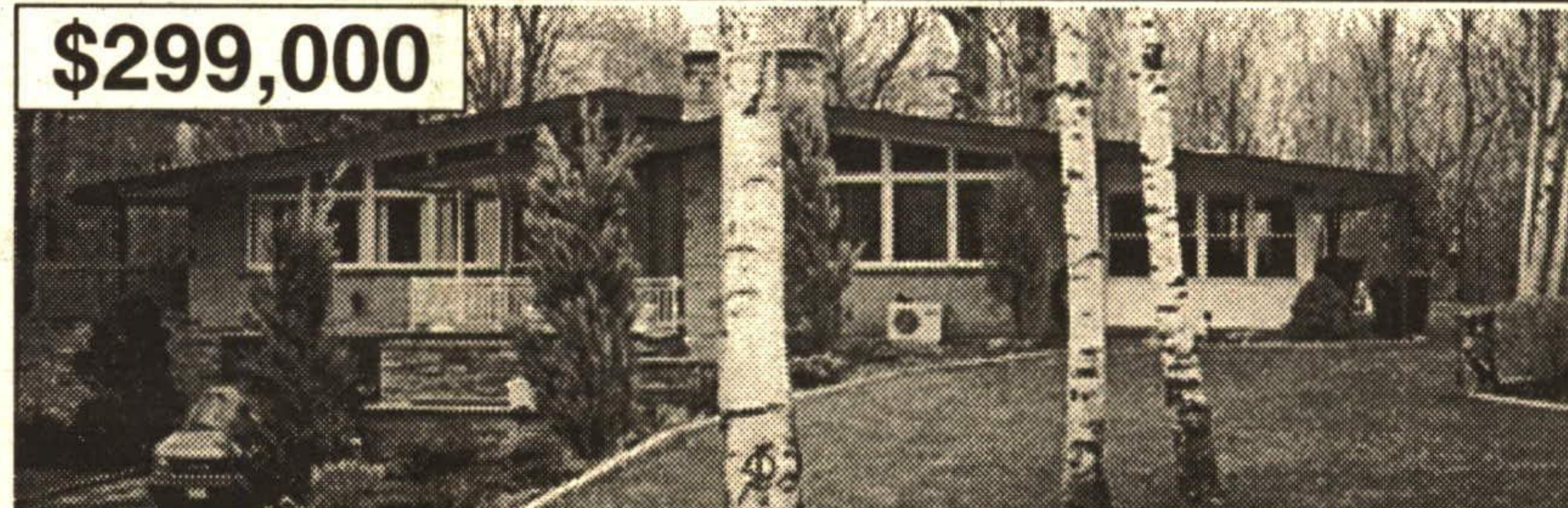
## \* PERFORMANCE COUNTS \* \*



**ONLY \$159,900**

For all this space, solid brick "Turn of the Century" home, walk to downtown, roof reshingled, furnace new in '96. Call Pam Reid\* to view. 96-326-30

**\$299,000**



### ONE-OF-A-KIND PROPERTY EDGE OF TOWN

1.42 acres with beautiful Birch & hardwood. This home shows to perfection, 8 skylights, 5 French doors, professionally finished w/o basement, 40 ft. sunroom off kitchen, family room with Angelstone fireplace, stone walkways & porch, w/o from living room & bedroom to balcony, cathedral ceilings, huge kitchen with built-in appliances, nature at your doorstep. Call Pam\* to view.



**PAM REID\*** Sales Rep.

**(905) 877-5165**

**JOHNSON ASSOCIATES**  
HALTON LTD., REALTOR

Independently Owned & Operated

## \* PERFORMANCE COUNTS \* \*

**\$349,900**



### EXCELLENT COUNTRY LOCATION

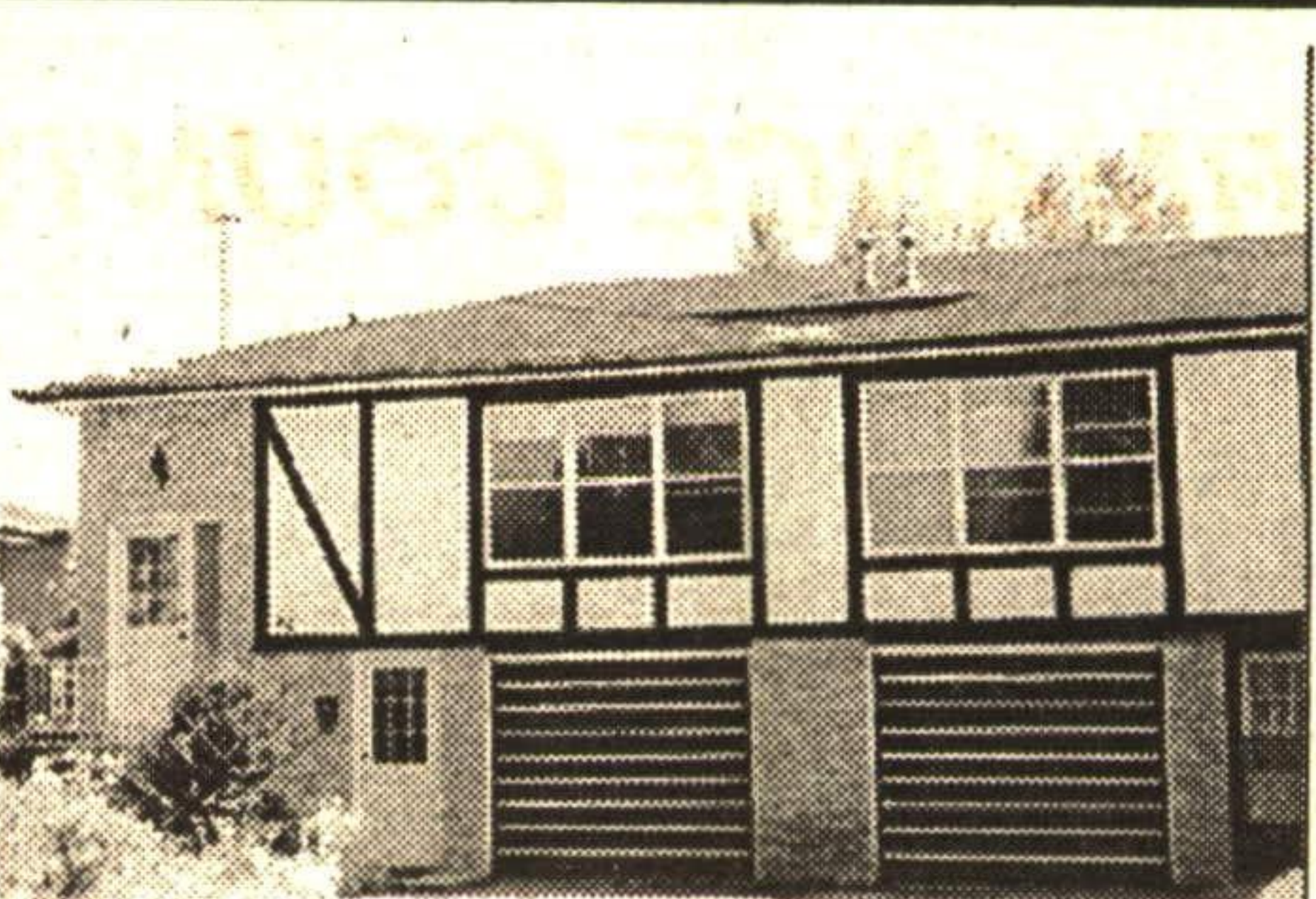
Custom built 4 bedroom home over 3,000 square feet on 12.85 acres super clean, with many upgrades. 200 amp service 30 x 50 ft. barn with hydro and water. A must to see for all you country lovers. For your showing call Bill Lamberink\*. RMAC96-052

**\$235,000**



### A REAL HIDEAWAY

12+ acres of bush, beautiful walk ways, 2 ponds, small stream, approx. 2000 sq. ft. of cedar home, open concept, cathedral ceilings. Buy this property and you don't need a cottage. Call Bill\* for more info. RMAC96-069



**\$134,500**

Semi detached home in Acton, across from park and playground, single car garage & walkout from basement. Call Bill\* to see this one. RMAC96-066



**\$147,000**

### GREAT STARTER HOME

In older part of town. Large well treed lot, 3 bedrooms with family room addition. Give Bill\* a call for all the details. Priced to sell. RMAC95-095

### SCENIC 16 ACRES VACANT LAND

Between Acton & Georgetown. Priced to sell at \$69,000.



**BILL LAMBERINK**  
Associate Broker\*\* Res. 853-0439

**RE/MAX**

ACTON OFFICE - 2 Mill St. E.  
**(519) 853-2086**

**BLUE SPRINGS REALTY**  
(Halton) Corp.

Toronto Line:  
**(905) 874-3053**

*It's the Experience!*