

## Region to follow progress in hunt for Peel landfills

Continued from page 1  
 know yet if any of the three sites will appear on the short list that the IWA is expected to release in late September. The short list will narrow down the list of sites to three or four locations.

Mohammed told committee members that the Region is waiting for the release of the short list which will be reviewed by regional staff. At that time, a report on the landfill site selection process will be prepared for regional council's

consideration, the planning commissioner said.

According to the staff report, the Region has already forwarded comments on the issue to the IWA. Regional concerns focus on transportation along Winston Churchill Road, which divides Halton and Peel, and hydrogeology which relates to the region's responsibility to provide municipal water in Georgetown. "Throughout this process, Halton staff will endeavour to coordinate our review and

comments with the Town of Halton Hills and the Credit Valley Conservation Authority," the report concluded.

The Town of Halton Hills is openly critical of the process followed by IWA in identifying the Peel sites. Earlier this week, town council gave unanimous approval to a resolution calling for a meeting between town council and Premier Bob Rae, Grier and IWA officials "to discuss Ontario's landfill policies and the IWA's landfill search."

**PROVEN  
 PERFORMANCE  
 SOLD**

**ARTHUR F.  
 JOHNSON &  
 ASSOCIATES**  
 LIMITED REALTOR

877-5165 874-3040

833-9714 873-0655

Erin Res.



**MARTHA SUMMERS**  
 Sales Representative

**"PERFORMANCE COUNTS!"**

**SOLD**

**ARTHUR F.  
 JOHNSON &  
 ASSOCIATES**  
 LIMITED REALTOR

**877-5165**

24-Hour Pager



**BRENDA PAYTON**  
 Sales Representative



Bus. 877-5165  
 Res. 877-7578

### TOWN OR COUNTRY - THE CHOICE IS YOURS



**ERIN - JUST LIKE A PARK!!**  
 \$489,000 - for your own 10 acres with pond, pool, meadow. Large custom home, 4 bdrm., studio, family room w/stone f-place, country kitchen, privacy.  
 92-2-268



**A PLACE TO START  
 NEW-CUSTOM VALUE**  
 Spacious and gracious on 2+ acres on Kennedy Road. Flower court, 4 bedrooms, large family room with walkout and fireplace. Show and sell! \$399,000  
 92-2-270



**BELFOUNTAIN CHARACTER**  
 40 rolling acres cleared and treed. Pond, house/barn combo, beamed liv. rm. ceilings, fireplace, 3 bdrms, paddocks, 8 stalls. Potential!!  
 92-2-273



**SPECTACULAR ERIN VIEWS**  
 \$249,000 - 2 acres - recently constructed home with lots of light. Living & dining room, solarium type kit, main floor master.  
 92-2-281



**ERIN HOBBY FARM**  
 \$274,900 - 10 acres with barn & pasture. Bright 3 bdrm. family home with country kitchen, woodstove, rec room.  
 92-2-275



**BUILDERS OWN ERIN**  
 \$349,000 - Long southern views, 12 ft. ceilings, screened in sunroom, full finished, lower level with walkout. Quality!  
 92-2-310



**HOBBY FARM - 5 ACRES**  
 4 bedroom upgraded home, pine wainscoting freshly painted, finished rec room. 5 stall barn - just move in. \$249,000.  
 92-2-397



**POND, PRIVACY & 2 ACRES**  
 Recently upgraded, 3 bedroom, finished rec room, spring fed pond, privacy. Value at \$219,000.  
 92-2-400

**WINSTON CHURCHILL INVESTMENT**  
 75 acres just north of Norval, 15 estate lot proposal. Great value at \$699,000.  
 92-2-374

**ADJACENT CALEDON VILLAGE**  
 49 Prime Acres with proposal for 45 lots. Fabulous location. \$1,800,000

**YOUR HOME  
 ADVERTISED  
 EVERY WEEK  
 UNTIL IT'S  
 SOLD!**

**GET SOLD!  
 CALL BRENDA PAYTON\***

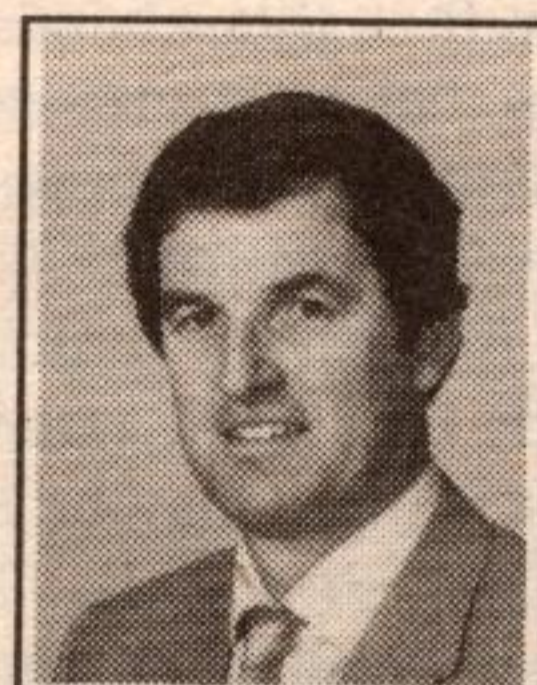
Call for a  
**FREE**  
 Market Evaluation  
 of your home

Not intended to solicit properties already listed for sale



**BACKING ONTO PARKLAND**

\$179,900 asking - Upgraded four bedroom, spacious family kitchen, professionally finished rec room with brick fireplace, 2 baths, 2 car garage, double paved drive, newly fenced yard - very private call Larry!  
 92-2-398



**LARRY BARNSTAPLE**  
 Sales Representative\*  
 Res. 519-833-9578

**PROVIDING REAL ESTATE  
 SERVICES SINCE 1972**

877-5165 833-9714

**ARTHUR F.  
 JOHNSON &  
 ASSOCIATES**  
 LIMITED REALTOR



**THIS ONE HAS IT ALL!**

\$229,000 Asking... 3 bedroom country bungalow on beautifully landscaped lot, oversized dining room, new kitchen with sunshine ceiling, main floor Florida room, finished lower level with walkout, spacious rec room with glass door wood stove. Many upgrade features, don't wait. Call Larry\* 874-3040.  
 92-2-387



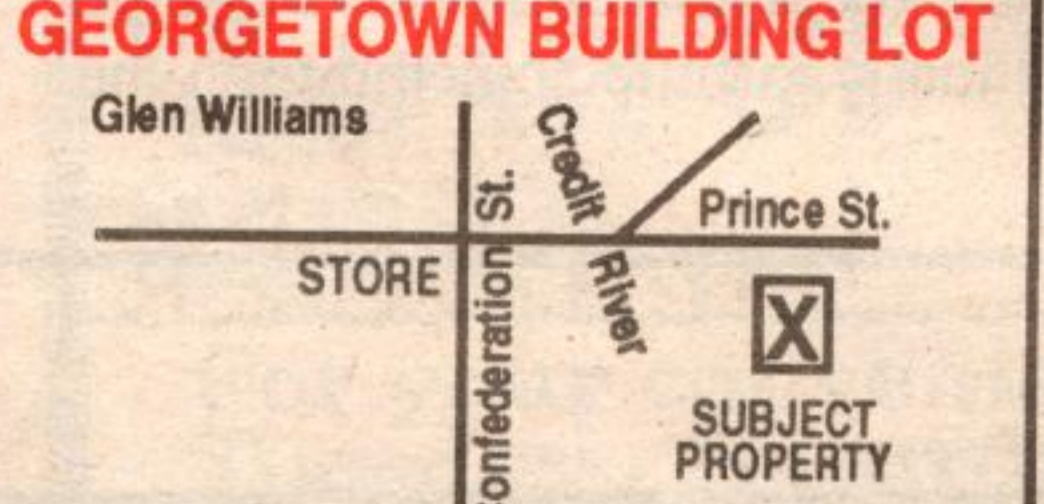
**ONLY \$379,900**

Scenic 74 acre farm with bank barn 15 min to "GO" train. Exceptional 2600 sq. ft. home. With walkout basement, oak kitchen, main floor laundry family room with fireplace.  
 92-2-128



**IT'S JUST A GOOD BUY!**

Immaculate 3 bedroom on landscaped acre lot. French doors to 1000 sq. ft. 3 level deck. Large insulated basement. Close to "GO". Asking \$217,900.  
 91-449



**GEORGETOWN BUILDING LOT**

\$139,000 asking. Outstanding building lot on Prince Street in Glen Williams. Rolling land with trees. Vendor will assist with financing.



**HIGH ON A HILL**

47 plus acres just north of Terra Cotta. View of Toronto Skyline. Large rooms, sauna, hot tub room. Fantastic shop - call Larry\*.  
 92-2-292



**FEATURE HOME**

Hot! New! \$169,900. Hurry! This one won't last long. Super upgrades. Quiet crescent. Immaculate.  
 92-2-392



**R-2000 QUALITY**

And a great price! \$338,000. Asking for this all brick 2500 sq. ft. home on one of Georgetown's preferred one acre+ locations. Chef's kitchen, beautiful sunny atrium with sunken hot tub, circular oak staircase leading to spacious bedrooms. Too many features to list. Call Larry Barnstaple\* to view. 874-3040.  
 92-2-369



**MARKET GARDEN**

\$239,000 asking. 4 beautiful acres with pond, 6 bedroom home, family room with fireplace and French doors, 2 baths, new Florida room with deck. Call Larry\*.  
 92-2-308



**INVESTMENT COMMERCIAL**

3000 sq. ft. on Main Street; 2 apartments, upscale store and store front; income carries everything. Asking \$298,000.  
 92-2-138



**11 MEAGAN DRIVE  
 GLEN WILLIAMS**

92-2-147



**8TH LINE SOUTH  
 HALTON HILLS**

92-2-309