

ENTERTAINMENT



The Kentners
 Social Catering Ltd.
 Banquet Halls Available
 Sacre Coeur Parish Hall or St. George's Anglican Church
 873-0404



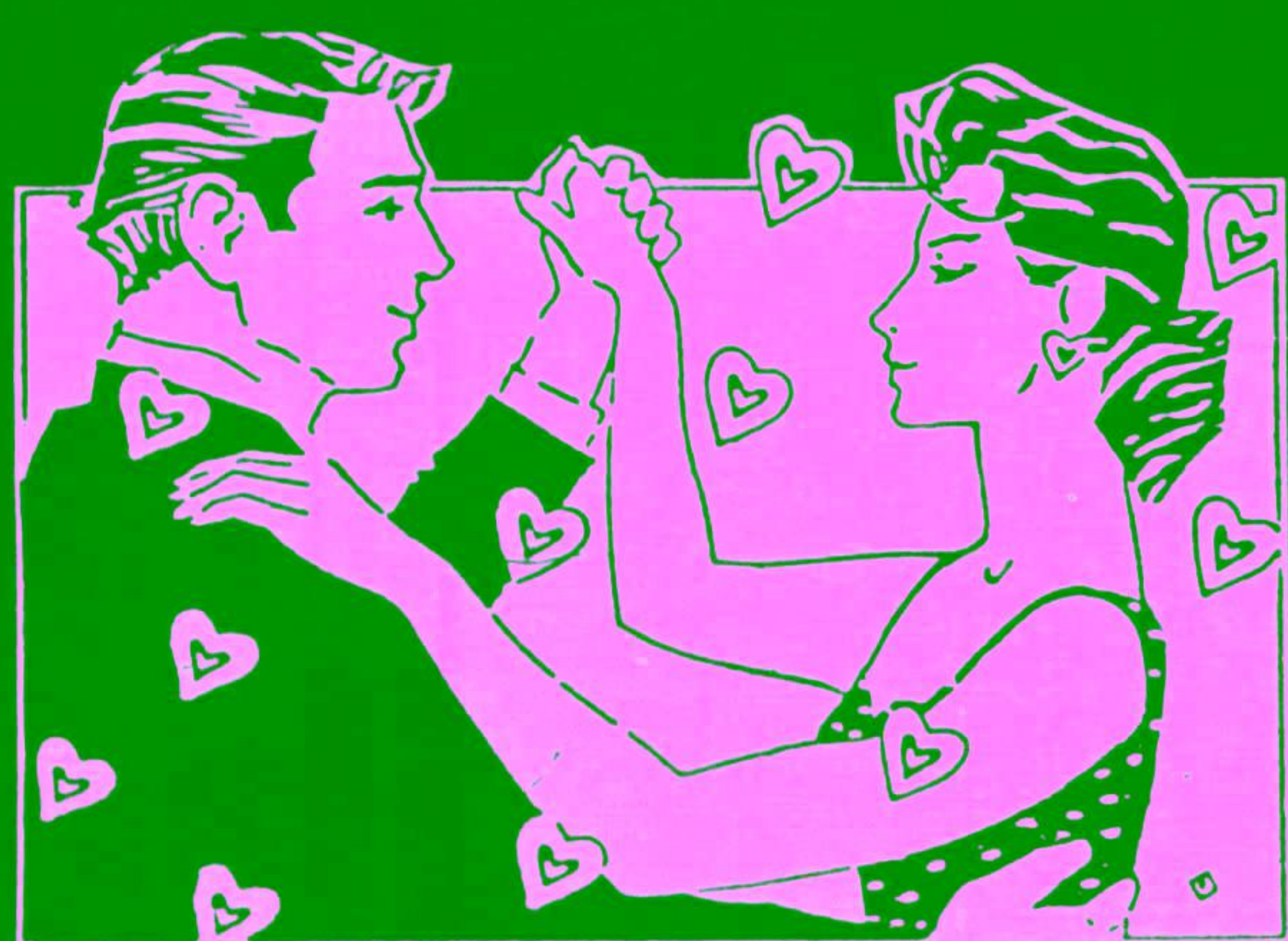
873-9575
 Hwy. 7, W. of Mississauga Rd.
 at Winston Churchill Blvd.

*Ontario's Most Spectacular
 Night Club presents....*

**Saturday Night
 Singles Dance** From 7:00 p.m.

- Come Join All of the Excitement!*
- ☆ Great Sound and Light Show
 - ☆ Live D.J.
 - ☆ Great Food & More
- Prizes....Prizes....Prizes*

Coming Soon....FRIDAY NIGHT ROCK A' DANCE PARTY!
 Admission: \$5.00 Non-Members \$4.00 Members



873-9575
 Hwy. 7, W. of Mississauga Rd.
 at Winston Churchill Blvd.

**Complimentary
 Snack Buffet**

with this coupon

Expires Sept 1/92



Georgeview Restaurant

Open Kitchen

Serving Halton Hills for over 30 Years



DAILY



BACON, HAM OR SAUSAGE
 HOME FRIES, 2 EGGS & TOAST

\$2.75

*Newly
 Renovated and
 Expanded
 Dining Room for
 Family Dining*

SUNDAY - THURSDAY



SIRLOIN CLUB STEAK or
 BROILED BONELESS
 CHICKEN BREAST

INCLUDES
 SOUP OR JUICE
 TEA OR COFFEE & DESSERT

\$13.95

**OPEN
 7 DAYS**

154 GUELPH ST. GEORGETOWN
 (next to I.G.A.) **877-2511**

**FULLY LIC.
 UNDER
 L.L.B.O.**

Grease: not a good show – it's great

By Scott Kline

To say that Grease is a good show would be a lie.

The Georgetown Globe Production is great.

Despite some opening night jitters and an exuberant performance from the band the romping fun-filled performance warmed up the partisan capacity John Elliott Theatre crowd. It also set up the crowd for the rest of the show.

Act One highlights included Catherine Desormeaux (Marty) and the Pink Ladies rendition of Freddy, My Love and Chris Gawley playing Kenickie along with the rest of the Burger Palace Boys singing of their love for the "muscle car" — it had to be pushed on and off stage — Greased Lightnin'.

Nanci McNeil (Betty Rizzo) belted out Look at Me, I'm Sandra Dee in one of two solo performances that McNeil performed brilliantly.

But the absolute high point of the first act came just before the curtain when Craig Marshall in his role as Roger — "Rump" — and Jan (Kristen Johnston) lit up J.E.T. with their Mooning.

Opening night nerves were perhaps most noticeable in leads Allyson Tracey (Sandy Dumbrowski) and Barry Pletch (Danny Zuko) in the first half of the show.

But when the curtain went up on Act Two, both performers came out ready to show their best.

Tracey's voice rang out across the theatre and a hushed crowd for her It's Raining on Prom Night duet with Diane Atkinson (Cha-Cha DiGregorio) and again for her solo Look at Me, I'm Sandra Dee - Reprise.

During Pletch's Alone at a Drive-In Movie it was hard to tell just who was having more fun — the actor or the audience.

The strong second half of the show was also marked by a strong performance from Shannon Marshall (Frenchy), Mark Llewellyn (Teen Angel).

Patty Simcox was bubbly and convincing in her role as Sarah Mills — we all went to school with someone like her — while Paul d'Entremont's Doody and Evan Robinson's Sonny LaTierri constantly added a comic touch to an already funny show.

Joan Herrier, Doug MacDougall, Ted Vanderstoop, Mary Bilik, Sue Campbell, Roseanne McCarthy and Ivan McQuillan rounded out the terrific cast and performed magnificently in their somewhat unheralded roles.

Throughout the show, the entire cast pulled off Evelyn Webster's choreography without a hitch and a fabulous band lead by David Ambrose kept the show moving.

Crisp set changes, many made by the cast themselves, kept the show running smoothly.