

# You Are Reading The

HALTON HILLS

# WEEKEND

# Real Estate Digest

## JOHNSONS ASSOCIATES HALTON LTD., REALTOR



Farming 15th C. German woodcut

### Hobby Farms and Other Rural Delights

#### 16 Acres and Pond

Comfortable country style 4 bedroom home. Many recent upgrades include shingles, well pump, oil furnace & oil hot water tank. Barn, suitable for 3 horses, serviced with hydro and new syphon pump. Offered at \$259,000.

#### 23 Acres and Two Large Ponds

Three bedroom Viceroy bungalow with solarium kitchen and full finished basement with above grade windows. Handsome new auxiliary building, 30' x 50', can be a workshop or barn. Property appropriate for paddocks. Everflowing stream.

#### 93 Acres and Pond

Beautifully restored 4 bedroom home on Heart Lake Rd. near Caledon Village. Kitchen with Cellini cabinetry & Corian counters adjoins dining area with hardwood floors and wall-mount fireplace. Good access to Toronto and minutes to Caledon Ski Club. Asking \$649,000.

#### 45 Acres and Pond

Vacant land with hardwood bush and rolling fields with several ideal home site locations. On paved road close to Georgetown and Erin Village. \$219,000.

#### 2 Acres

Level residential building lot, with 200' frontage, and near Hillsburgh shopping and school. \$69,000.

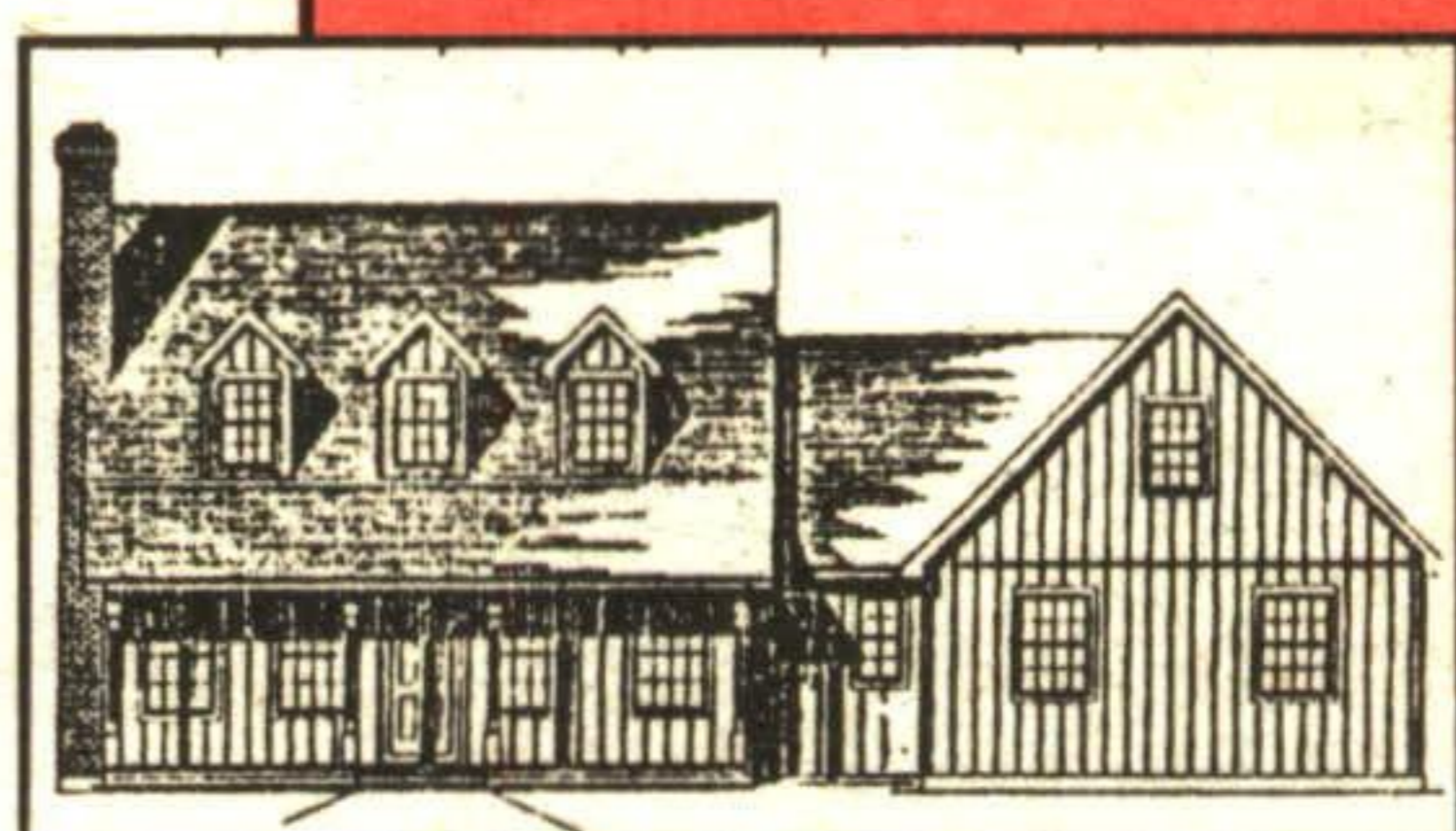
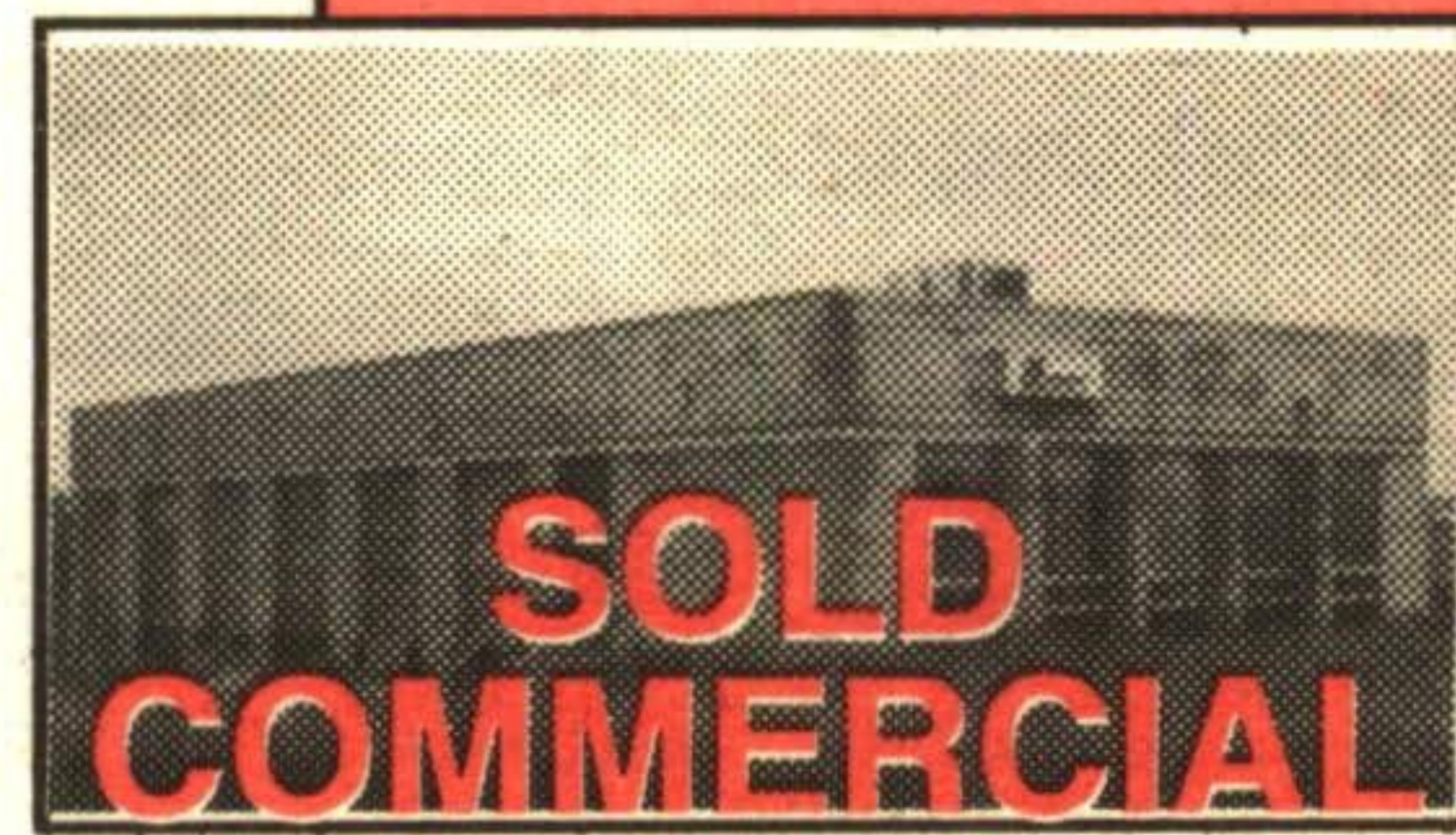
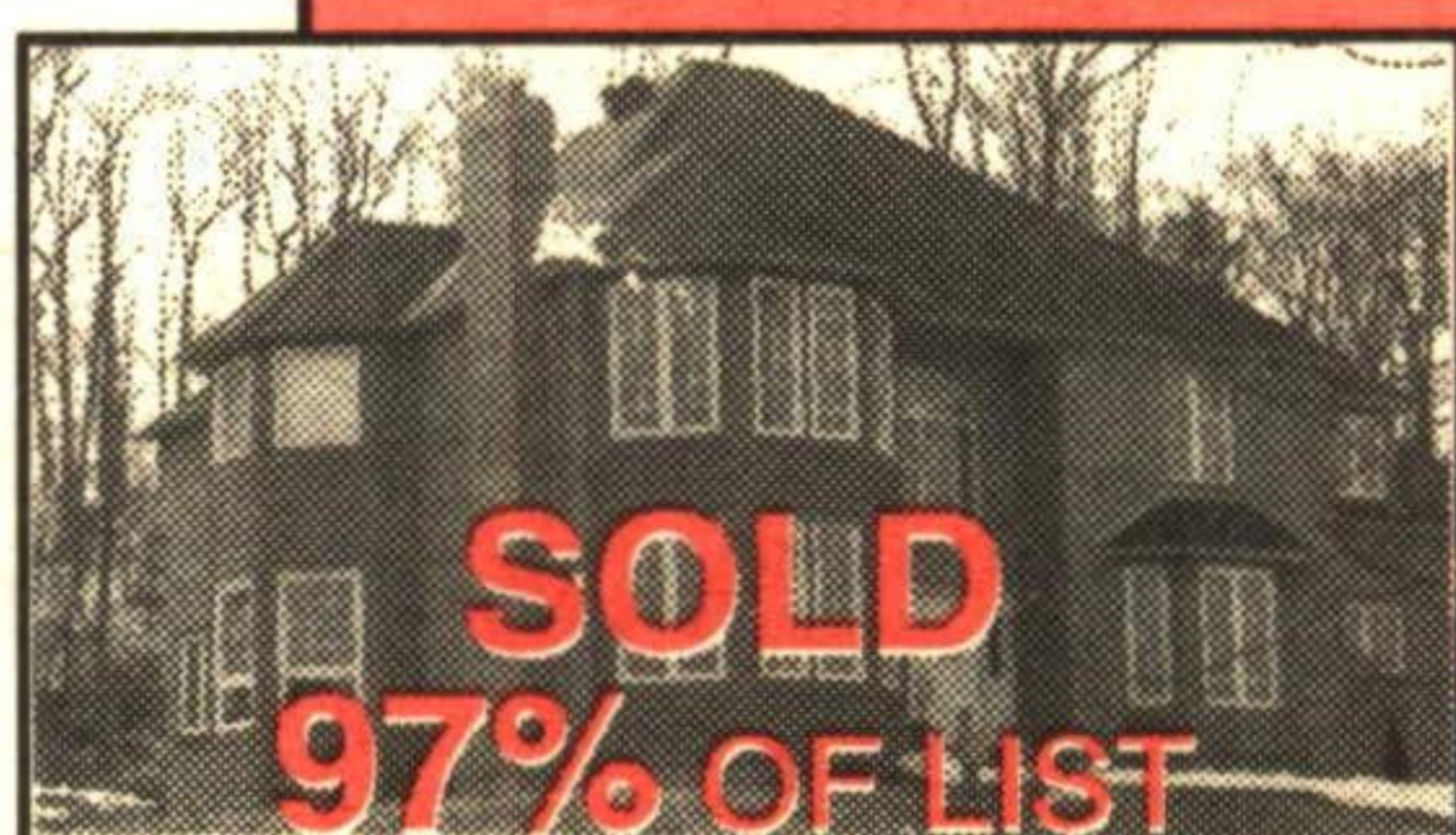
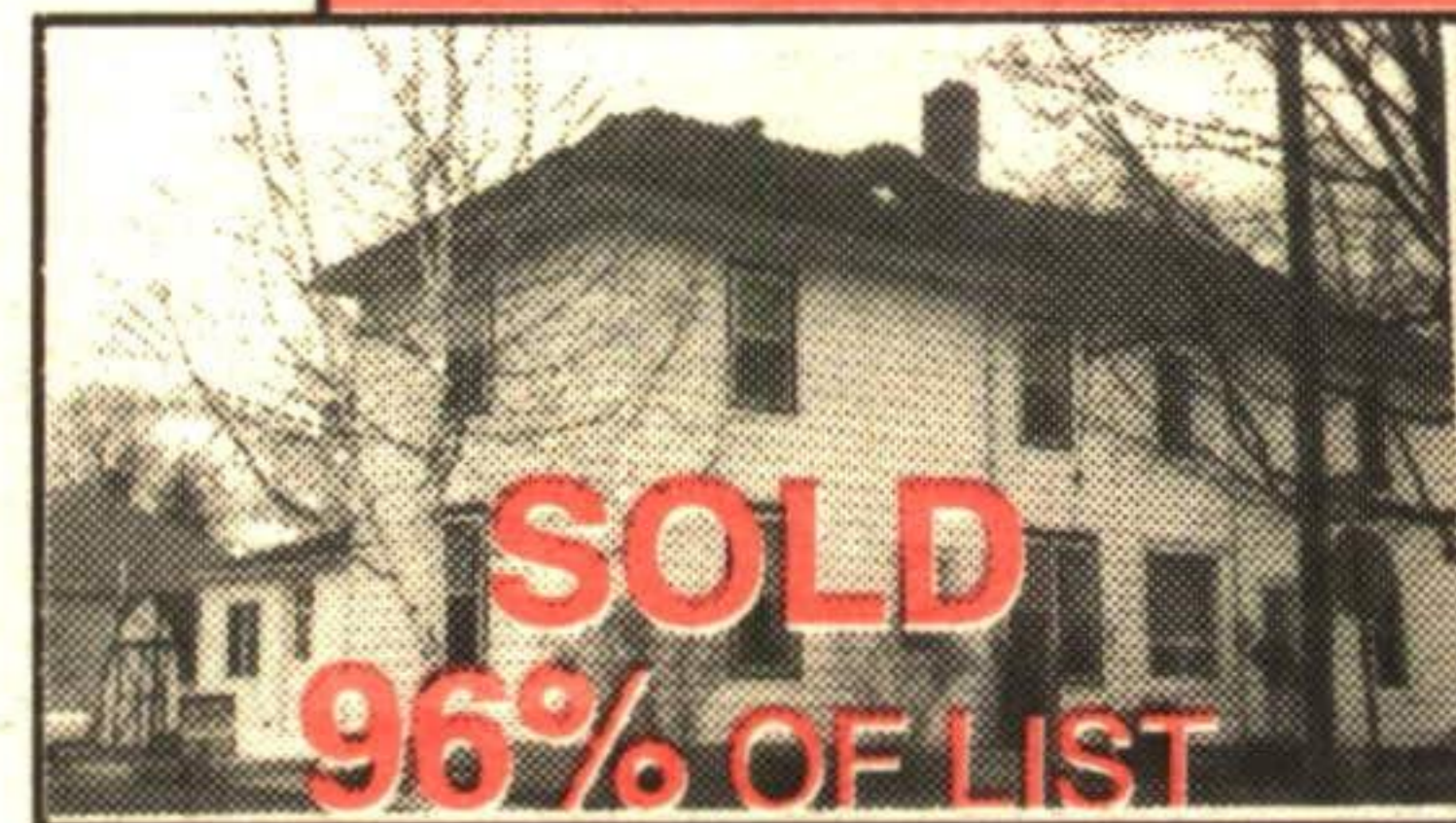
**Tom Comery** B.A. LL.B.

Sales Representative

**Erin (519) 833-9714 and Tor. (905) 874-3040**

Over 10 years of real estate practice in the rolling hills of Erin and Caledon

## SOLD IN PAST 30 DAYS



1300 sq. ft. office commercial  
**LEASED**

500 sq. ft. warehousing  
**LEASED**

## I NEED NEW LISTINGS!

**RE/MAX**  
BLUE SPRINGS  
REALTY (Halton) CORP.



*It's The Experience!*

# JOHN BARTLETT

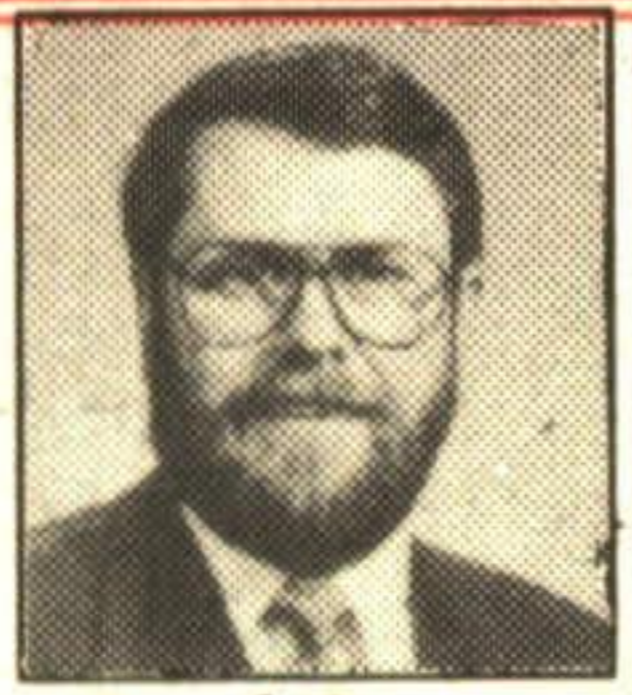
\*Sales Representative

(519) 853-2086

(905) 874-3053



**ACTON OFFICE**  
519-853-2086  
**ROCKWOOD OFFICE**  
519-856-4348  
**TORONTO LINE**  
905-874-3053



**Gord Dawe**  
Assoc Broker



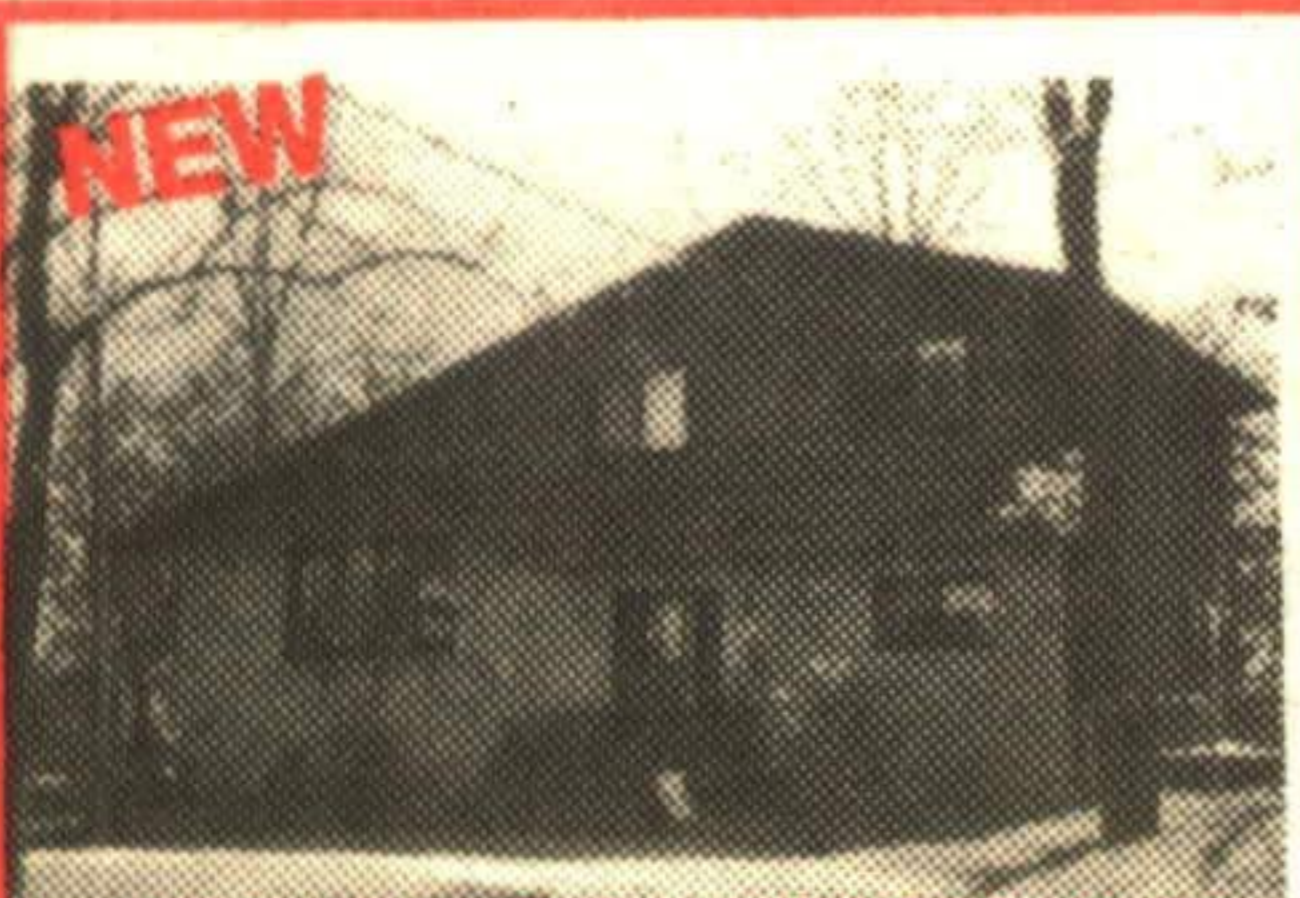
**Michele Dawe**  
Sales Rep.

OVER 35  
YEARS OF  
EXPERIENCE  
SELLING  
HOMES  
IN YOUR  
AREA



#### HIGHWAY FRONTAGE

2500 sq. ft. bungalow, will accommodate two families. 11 acres, 30' x 80' storage shed, 30' x 50' greenhouse. Hwy. 25 - 10 min. north of 401. Please call Gord\*. RMAC95-045



#### STONE & CEDAR SIDESPLIT

Mature area, 3 bedrooms plus den, family room with woodstove & walkout to large deck & private yard. Cathedral ceiling, skylight, gas furnace. A pleasure to view. Please call Michele\* or Gord\*. RMRW96-045



#### A LITTLE PIECE OF COUNTRY

3 bedroom bungalow, walkout from kitchen to large deck. Finished basement with extra bedroom & walkout, inground pool. Enjoy the summer season! Please call Michele\* or Gord\*. RMRW96-044



#### GUELPH LINE LOCATION

\$279,000  
9 acre presently operated as Veterinary Clinic. Reception, showroom, 3 examination rooms, administration room, office, x-ray, 2 surgery rooms and indoor kennel. Please call Gord\* for appointment. RMRW96-038



#### BEAUTIFUL ESTATE HOME

\$369,000  
Over 3000 sq. ft. of quality, 4 bedrooms, oak kitchen, oak paneled den, liv. room, hobby room with skylights. Tile and oak floors, manicured gardens. A pleasure to show. Please call Michele\* or Gord\*. RMRW96-035



#### UNIVERSITY GUELPH LOCATION

\$119,900  
2 full washrooms, 2 separate entrances, renovated - new plumbing, wiring, drywalling & insulation. Landscaping & deck. Commercial zoning. Close to downtown, university & train station. Please call Michele\* or Gord\*. RMRW96-034



#### RAISED BUNGALOW

\$169,900  
1380 sq. ft. Large principle rooms, oak kitchen with breakfast nook and walkout to sunroom. Double car garage, private fenced lot with inground pool. Please call Michele\* or Gord\*. RMRW96-027



#### STONE - SHORT WALK TO THE RIVER

\$184,900  
Walkout from lower level to private yard. Modern bright kitchen with center island, cozy livingroom with deep sills, high ceilings, pine floors, quiet village location. Please call Michele\* or Gord\*. RMRW95-036

#### NEW LICENSED ROOMING HOUSE - GUELPH

plus 2 bedroom apartment. Potential 45,000 gross, parking, 80' x 165' lot. Rented garage is added income. Please call Gord\*. \$249,000.



#### NEW LISTING

\$349,900



#### EXCELLENT COUNTRY LOCATION

Custom built 4 bedroom home over 3,000 square feet on 12.85 acres super clean, with many upgrades. 200 amp service 30 x 50 ft. barn with hydro and water. A must to see for all you country lovers. For your showing call Bill Lamberink\*. RMAC96-052

\$147,000



#### URGENT MUST SELL

3 bedroom home in older part of town. Large family room addition with walkout to deck. Large mature lot. Please call Bill\* for all info. and or showing. RMAC95-095

## SCENIC 16 ACRE VACANT LAND

Between Acton and Georgetown. Priced to sell at \$69,000.



**BILL LAMBERINK**  
Associate Broker\*\* Res. 853-0439

*It's the Experience!*

**RE/MAX**

BLUE SPRINGS REALTY  
(Halton) Corp.

ACTON OFFICE - 2 Mill St. E.  
(519) 853-2086

Toronto Line:  
(905) 874-3053