



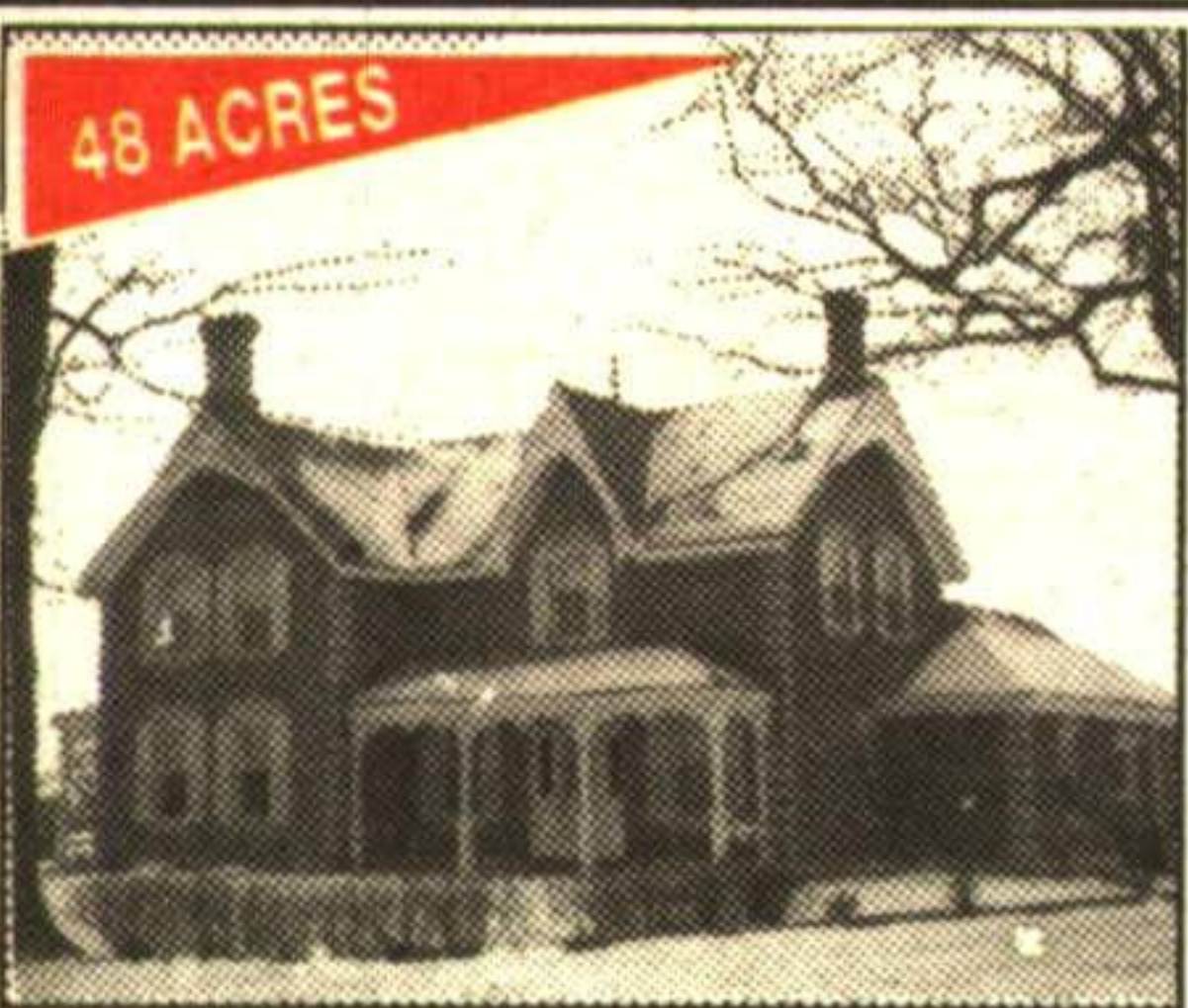
NEW!
SOLD
A NEW LIFESTYLE!
REGAN CRESCENT RAVINE

Spacious 4 bedroom home on a stunning ravine lot, private and treed. Main floor family room with walkout to deck, walkout from basement rec room to yard and ravine. New kitchen, some new broadloom, recent redecoration. **\$236,900.** 96-30-190



CLASSY
MEGA UPGRADES

In Georgetown South, the beautiful 4 bedroom Tribute home will win your heart. Sunny eat-in kitchen with upgraded cabinets and ceramic floors; unbelievable master suite with whirlpool tub, inlaid hardwood floors, family room with gorgeous fireplace. Excellent decor throughout making this home a beauty for the growing family.



48 ACRES
VICTORIAN BEAUTY

A fabulous Victorian farmhouse with lovely big principal rooms, high ceilings, covered verandahs and a wonderful setting. Big recent steel clad barn with hydro and water, plus the original stone barn. 48 acres with fenced paddocks and some bush on the property. Something for everyone with the inground kidney shaped pool and easy access for the commuter as this farm is north of Rockwood. A winner for \$359,900. 96-133



RAVINE!
SOLD
A NEW LIFESTYLE!
PRESTIGE TOWNHOUSE!

End unit with finished basement and extra bedroom. Ravine setting with beautiful oversized deck to enjoy the fabulous view. Excellent decor and clean, clean, clean. Don't miss this beauty for \$144,900 - they don't come up often! 95-628

LIFESTYLES BY



JOHN & GLENDA

Planting Strong Roots for Tomorrow
John Hill & Glenda Hughes
Sales Representatives*

877-8402

JOHNSON ASSOCIATES
HALTON LTD., REALTOR
Independently Owned & Operated



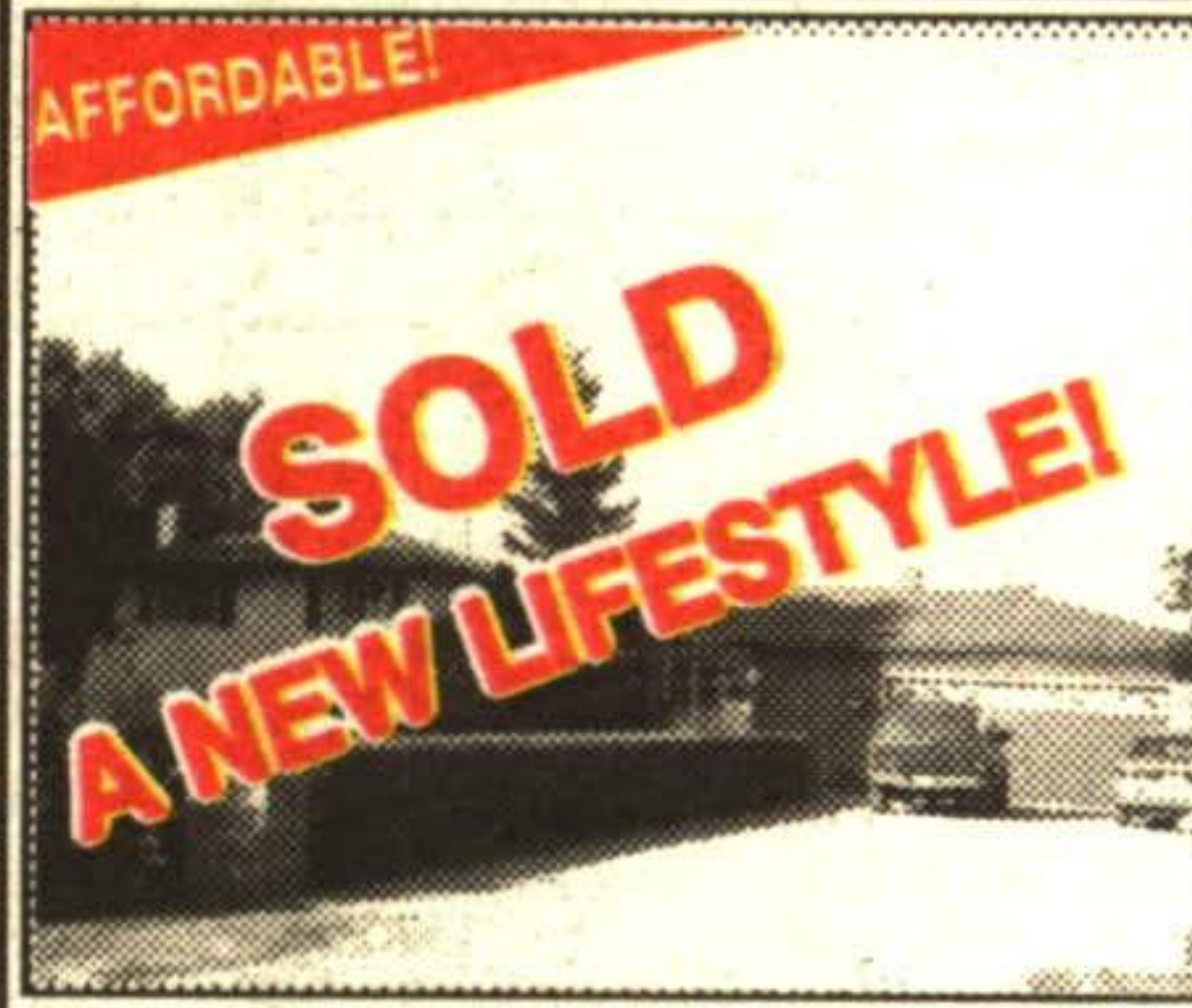
A WINNER
SOLD
A NEW LIFESTYLE!
HEAVILY TREED!

Only minutes from Georgetown, this pretty raised bungalow would be a treat to own! Random plank hardwood flooring, above grade family room with woodstove plus a playroom. Beautiful deck from sliders in the dining room to enjoy nature at it's finest. Bruce Trail access to the rear of the property for the hiker and cross country skier. Excellent decor, excellent value for \$212,900! 96-31-197



UNIQUE
4200 SQ. FT. TIMBERFRAME

Unique custom built home on a beautiful 10 acres - near Milton. Open concept design, great for entertaining, and with warmth and charm that only wood can provide. "Great" room combines kitchen, family room & eating area, separate formal dining room and living rooms. Almost 600 sq. ft. office/games area. Why not view this one-of-a-kind home? \$660,000. 95-02-585



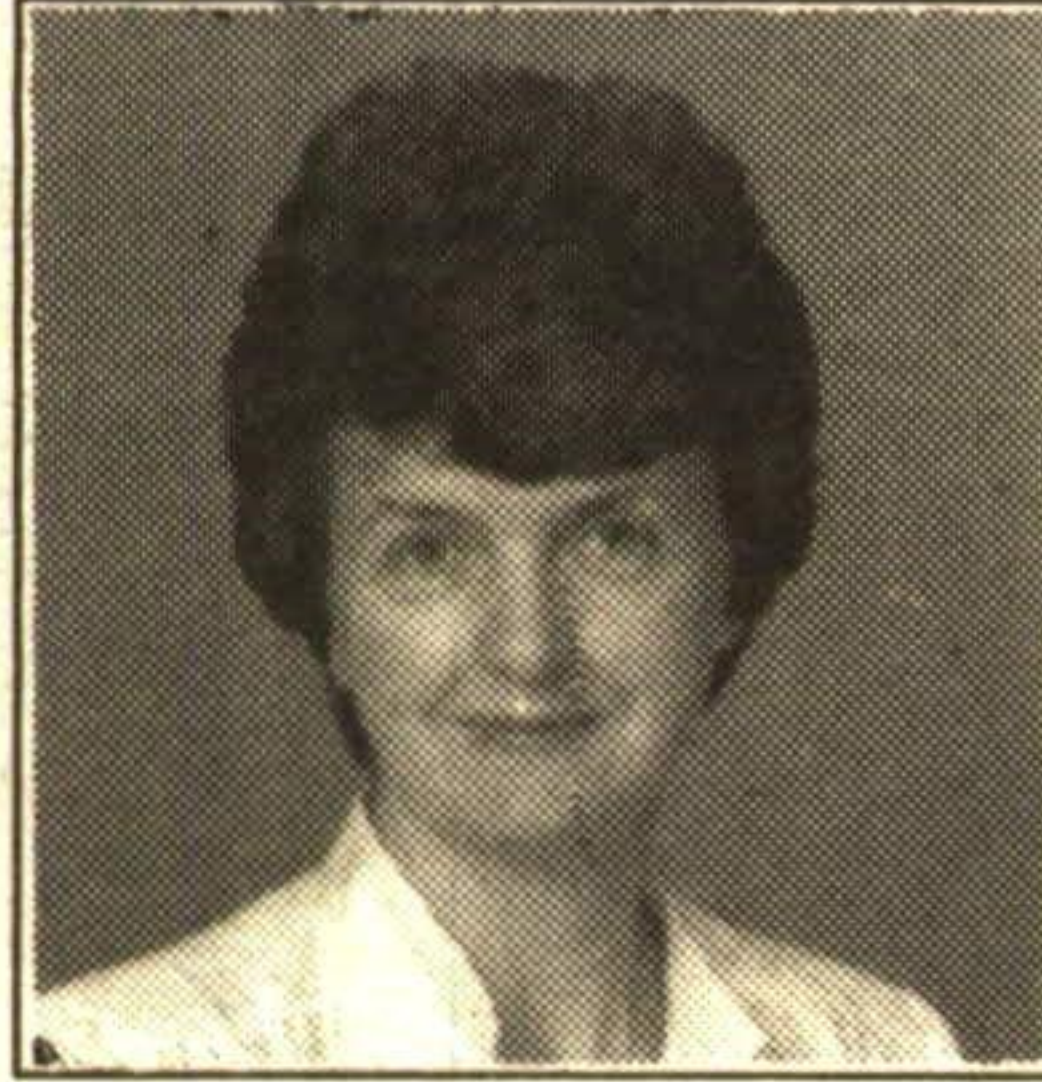
AFFORDABLE!
SOLD
A NEW LIFESTYLE!
BEAUTIFUL COUNTRY LOCATION

Just outside Georgetown, this well-cared for home sits on a superb 2/3 acre lot. Home has loads of recent improvements and upgrades. Affordable country life!! \$224,900. 95-2-648



CHARMING
SOLD
A NEW LIFESTYLE!
LOCATION PLUS!!

Heart of the Park district on Joseph St., for this spacious 4 bedroom home. Elegant oak kitchen, main floor family room, luxurious ensuite off master bedroom with jacuzzi tub. All the features of today's homes in a wonderful location. **\$229,900.** 96-161



MARY MAAN

SALES REPRESENTATIVE



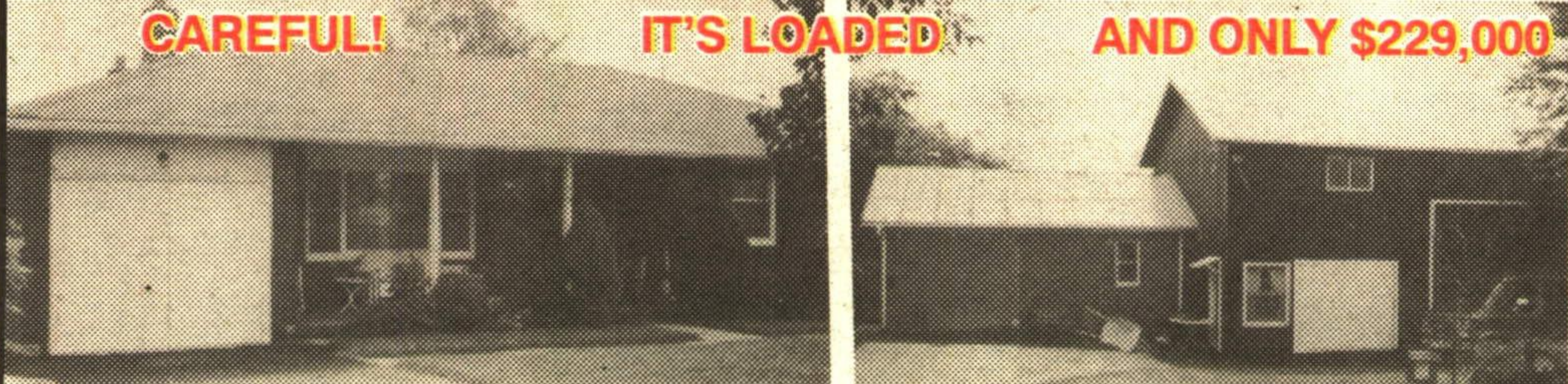
ROYAL LEPAGE
877-0173
Royal LePage Real Estate Service Ltd., Broker

Exposing your property to over 23,000 agents through the Toronto and Brampton Real Estate Boards



LIGHTLY TRAVELLED STREETS \$198,600

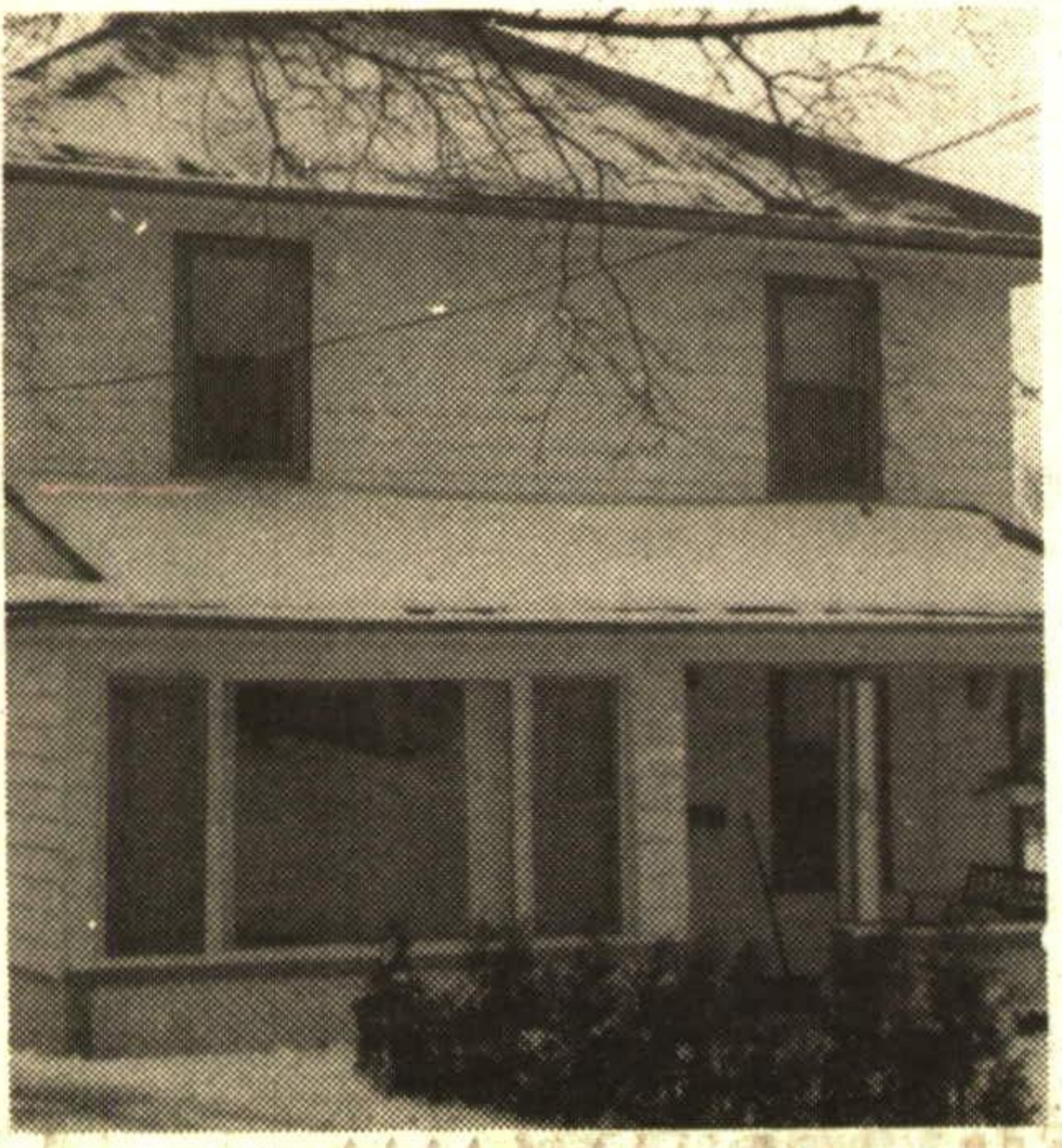
Almost new, immaculate 4 bedroom home, master with ensuite, main floor family room with woodburning fireplace, eat-in kitchen with upgraded cupboards and ceramics, walkout from kitchen to the deck, finished recreation room with ceramics and a walkout to the backyard. Don't miss this tastefully decorated, open plan model with upgrades galore. Call Mary*. 31-141



CAREFUL! IT'S LOADED AND ONLY \$229,000

- Three bedroom solid brick bungalow, set on a large country lot.
- Main level one bedroom nanny's apartment.
- C5 Commercial Zoning, Fancy goods store in the basement (separate entrance).
- 2 shops, single and a two storey (selling antique furniture).
- Call Mary*.

31-128



HOME PLUS INCOME DUPLEX \$159,900

Let the rent help pay the mortgage, in two years time, when you are comfortable, convert it back to a single family home. 2 x 2 bdrm duplex with sep. kitchens and entrances, 65 x 133 mature lot, huge two tier deck overlooking professionally landscaped garden, older home with original hardwood floors. Make sense? Then call Mary*. 31-135



HALTON HILLS GREENERY - \$259,900

Imagine a custom built executive bungalow on your own 2 acre perennial garden with many fruit trees and a year round stream running through it. Having a bright and spacious 2 bdrm in-law suite, large country kitchen, LR with sculptured ceiling and a large picture window, floor to ceiling stone FP, stop imagining, this place really exists. Only minutes from Georgetown. Call Mary*. 31-137



LEISURE TIME FOR SALE - \$139,500

Sell your mower, throw away your rake, move into a gorgeous 2 bdrm open plan condo with huge windows, master bedroom with ensuite, private balcony, great kitchen for entertaining, laundry facilities, 1200 sq. ft. of pure luxury, enjoy the whirlpool, sauna, exercise and party room, immaculate building, PETS WELCOME. Call Mary* 31-140