



THIS TEN ACRE HOBBY FARM HAS IT ALL

Three bedroom brick home with country character. Family room with stone fireplace and wet bar. Two large bedrooms upstairs, third bedroom or den on main level. Small horse barn. Property fenced, spring fed swimming pond with sauna cabin and deck. Oversized two car detached brick garage. Long tree lined lane. All yours for only \$279,000.



CUSTOM DESIGN by CHARLESTON HOMES

3 or 4 bedrooms to be built on large village lots in Erin. Many designs from Under \$200,000 to \$250,000.



CREDIT PINES ERIN

ERIN: Traditional Cape style home with country character to be built by Charleston Homes near Erin Village. Main level master suite, separate L.R. and D.R., main level laundry, two bedrooms upstairs. Bonus room over garage. Excellent value at only \$208,900 on 3/4 acre lot.

Four bedroom family size bungalow to be built by Charleston Homes in Credit Pines, Erin. Move in by summer. This model priced at \$279,900. Other bungalows from \$249,900 in Credit Pines.

**BUNGALOWS ON LAKEVIEW LOTS
ON THE SHORE OF LAKE BELWOOD.
1400 SQ. FT. TO 2,000 SQ. FT.
PRICED FROM \$169,900.**



SUPER SEMI

Amazing interior. Four bedrooms, two bathrooms, separate L.R. and D.R., eat-in kitchen, main floor laundry. Childrens play/games room. Decorated to the nines. Only \$139,900.



EXECUTIVE 3200 SQ. FT.

Five bedroom family home near village of Erin. Open concept kitchen and family room. Separate D.R., & Den. Finished bonus room over 3 car garage. Two FPs. Reduced to \$299,000. Early possession. Move in for summer.



LAWSON ROAD MILTON

Located two minutes from 401 and James Snow Parkway on same street as Toronto Auto Halton. Two industrial condo units, one unit is 1600 sq. ft. with 16 ft. clear ceiling, two offices, drive in bay and is only \$99,000. The large unit is 10,000 sq. ft. with 1500 sq. ft. of finished office, large mezzanine, 3 drive-in bays all on 1.5 acres. Excellent quality. Priced at \$589,000.

**RE/MAX
BLUE SPRINGS
REALTY (Halton) CORP.**

**(519) 853-2086
(905) 874-3053**

JOHN BARTLETT
*Sales Representative

Make The Move...

Re/Max Blue Springs Re/Max Blue Springs Re/Max Blue Springs Re/Max Blue Springs



RE/MAX BLUE SPRINGS REALTY (HALTON) CORP.
HEATHER (WHITING) SCOTLAND, R.L.I., Associate Broker**
"A Full Time Experienced Professional" Residential, ICI and
Land Development Member, R.L.I. (Realtors Land Institute) Re/max 100% Club
Acton Office (519) 853-2086



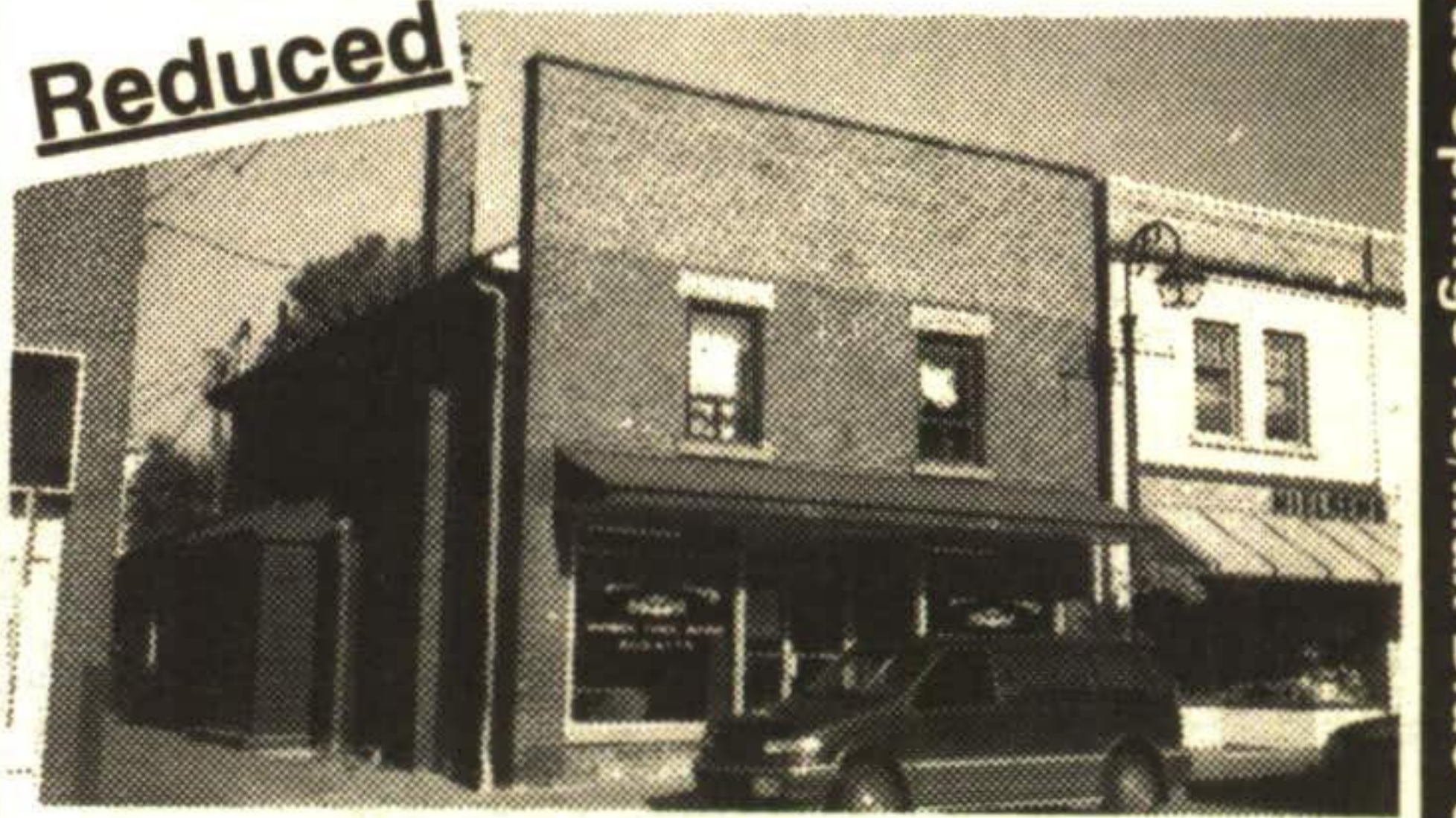
TURN OF THE CENTURY DUPLEX - \$129,900
Two bright spacious 1 bedroom suites easily convert to a single family residence, wide woodwork, French doors, high ceilings, hardwood floors. Double garage, extra parking, fenced yard. Call Heather**. RMAC96-022



ATTENTION TRUCKERS/CONTRACTORS \$229,900
2000 sq. ft. raised rancher on 5 acres with insulated steel 32' x 54' workshop - near 401. Call Heather**. RMAC95-096



PRESTIGIOUS COBBLESTONE PLACE ESTATES - \$349,900
3 bedrooms, Barzotti kitchen with sunken breakfast room, family room & den, double garage - sharp! Call Heather**. RMAC95-017



COMMERCIAL/INVESTMENT \$219,900
Quality building to fire code standards. Former bakery and equipment on main floor + super 1 BR apt. For sale or lease. Call Heather**. RMAC95-090

Re/Max Blue Springs Re/Max Blue Springs Re/Max Blue Springs Re/Max Blue Springs



BETTY MCKEND* Sales Rep.
877-0173

ROYAL LEPAGE 170 Guelph St.,
Georgetown

Royal LePage Real Estate Services Ltd., Broker



\$163,900 "THE FAMILY WILL LOVE IT!"
3 bedroom home in Acton with main level family room with fireplace & walkout to garden. Hardwood under broadloom. Won't last long! Call Betty McKend*. 32-65



\$189,900. "SPRING MOVE"
Spotless home - 3 bedrooms - big country kitchen, gas fireplace in rec room, steel workshop on separate lot. Pool. Call Betty McKend*. 32-66



\$159,900. "SPECIALLY LOVED"
Great starter home in welcoming village. 3+1 bedrooms in raised bungalow. Oak cabinetry. Pool size lot. Walk to school. Vendor has bought! Call Betty McKend*. 32-59



\$314,900. "NICE TO COME HOME TO!"
Long, pastoral views surround this class act! Dream kitchen - office space - formal living room / dining room, 4 bdrms. Excellent value for executive living. Call Betty McKend*. 32-60