

To Advertise
In This
Feature call Your
Ad Rep. at
873-0301

ACTON **FREE PRESS**

GEORGETOWN **INDEPENDENT**

Easter Dining Guide

GEORGETOWN GOLF & COUNTRY CLUB

Easter Brunch

Sunday, April 7th, 1996
11:00 a.m. - 2:00 p.m.

\$14.75/ person (plus tax)

Children 5 years & under **FREE** when accompanied by an adult. Children 5-12 **Half Price**

25% OFF for Senior Citizens (65 plus)

Menu:

Prime rib au jus; smoky ham, poached chicken breast, jambalaya, pasta with salmon, potatoes, veggies, salad bar, shrimp, scrambled eggs, bacon, sausage, fresh baked breads, our famous dessert table, coffee & tea.

All this overlooking the Golf Course and next to a crackling fireplace.

Reservations Required
(905) 877-8468

Visa & Amex Accepted

On the corner of 10th Line,
River Road and Mayfield Rd.



PRANK'S LATE NITE GRILL

Easter Weekend Breakfast Specials

Two eggs, bacon, sausage,
toast, hash browns,
home fries, grilled
tomato, pancakes.
Coffee or tea

\$5.25

**Serving Breakfast from
9 am til noon**

319 Guelph Street, Unit B
Georgetown
(905) 877-1939

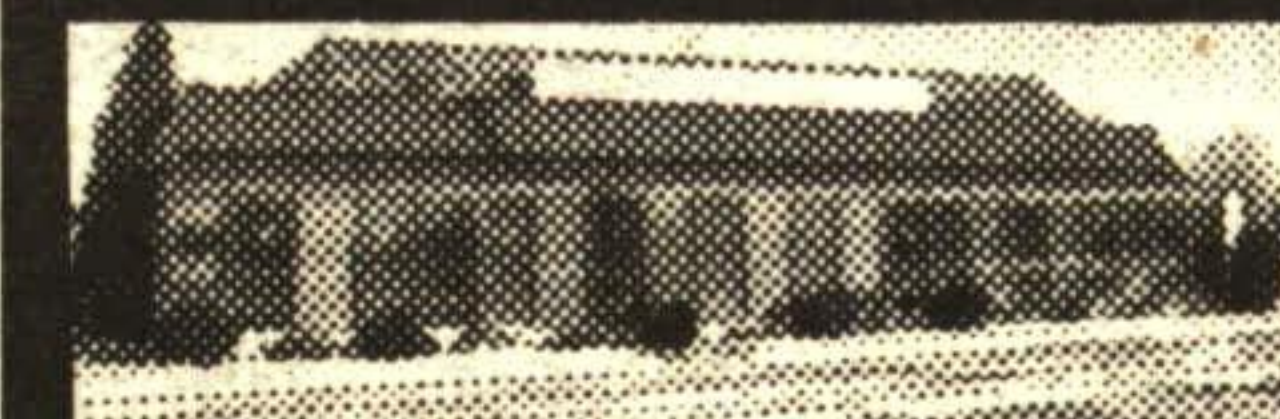
GOLDEN FISH & CHIPS

Open Good Friday
11 - 8:30

Haddock or Cod
with Chips **4.99** ea.

Halibut
with Chips **5.50** ea.

32 Main Street
DOWNTOWN GEORGETOWN
877-5700



Chateau Restaurant and Steak House

EASTER SUNDAY BUFFET 4:30 TO 8:30 PM

•Prime Rib •Roast Turkey
•Pasta •Potatoes
•Vegetables

ALL YOU CAN EAT SALAD BAR
•Dessert Table

12⁹⁵ Adults Children **7⁹⁵**
(Under 10)

367 Guelph St., Georgetown
877-7629

EXPECT MORE. EXPEND LESS.

THE NEW 1996 CIVIC HATCHBACK CX

- 1.6 Litre 106 HP Engine
- 5 Speed Manual Transmission
- Power Assist Brakes
- Dual Remote Mirrors
- Rear Defroster
- Driver Side Air Bags
- Body Side Mouldings

**HONDA
LEASE**

\$198/MONTH*

BUILT WITHOUT COMPROMISE



\$12,995**

THE NEW 1996 CIVIC LX SEDAN

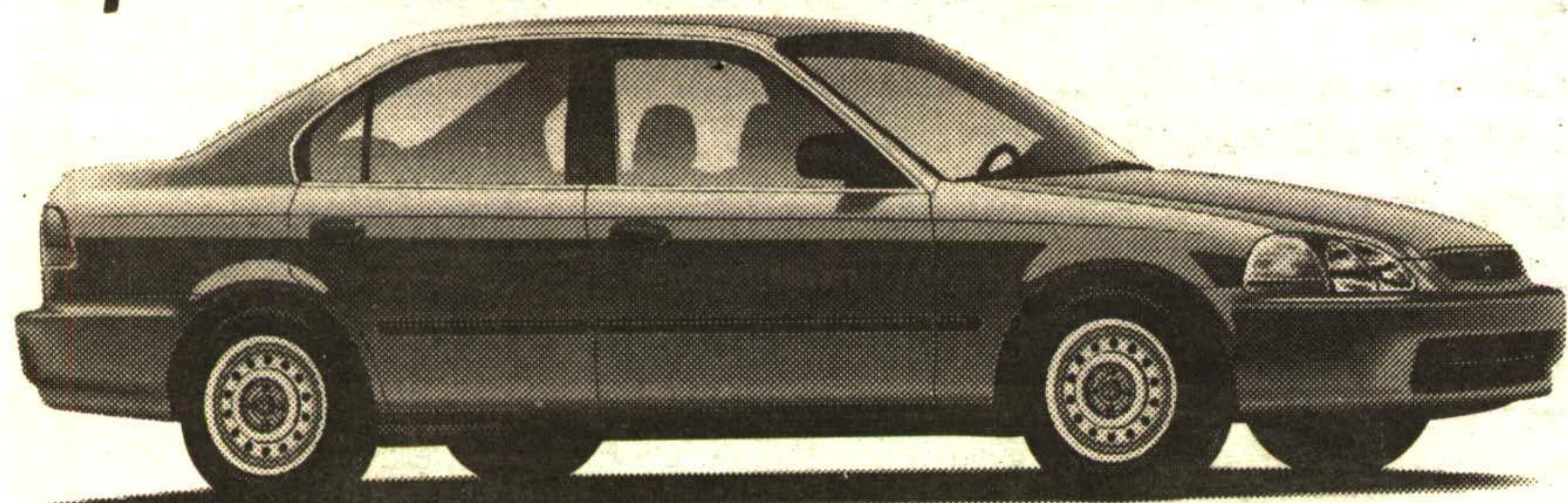
\$16,595**

**HONDA
LEASE**

\$256/MONTH*

- 1.6 Litre 106 HP Engine
- 5 Speed Manual Transmission
- Power Assist Brakes
- Power Assist Steering
- Dual Remote Mirrors
- AM/FM Stereo, 4 Speakers

- Dual Air Bags
- Adjustable Steering Column
- Body Side Mouldings
- Air Conditioning
- ABS Braking



* Payment based on 48 month lease \$850.00 down plus freight PDI & taxes. ** Plus freight, PDI Taxes and License.

GEORGETOWN HONDA

203 Guelph Street, Georgetown 873-1818

SALES • LEASING • SERVICE • PARTS • BODY SHOP

