

LOOK AT THIS!
\$102,900

Super Phase III townhouse, light and bright. 2 washrooms, eat-in kitchen, walkout from LR to patio and garden. Park in front of your house. Extra parking spot available. Many upgrades. This home carries like rent. For first time home buyer \$6,000 down, \$970./mth. for mortgage, taxes and condo fee.
RMAC96-010

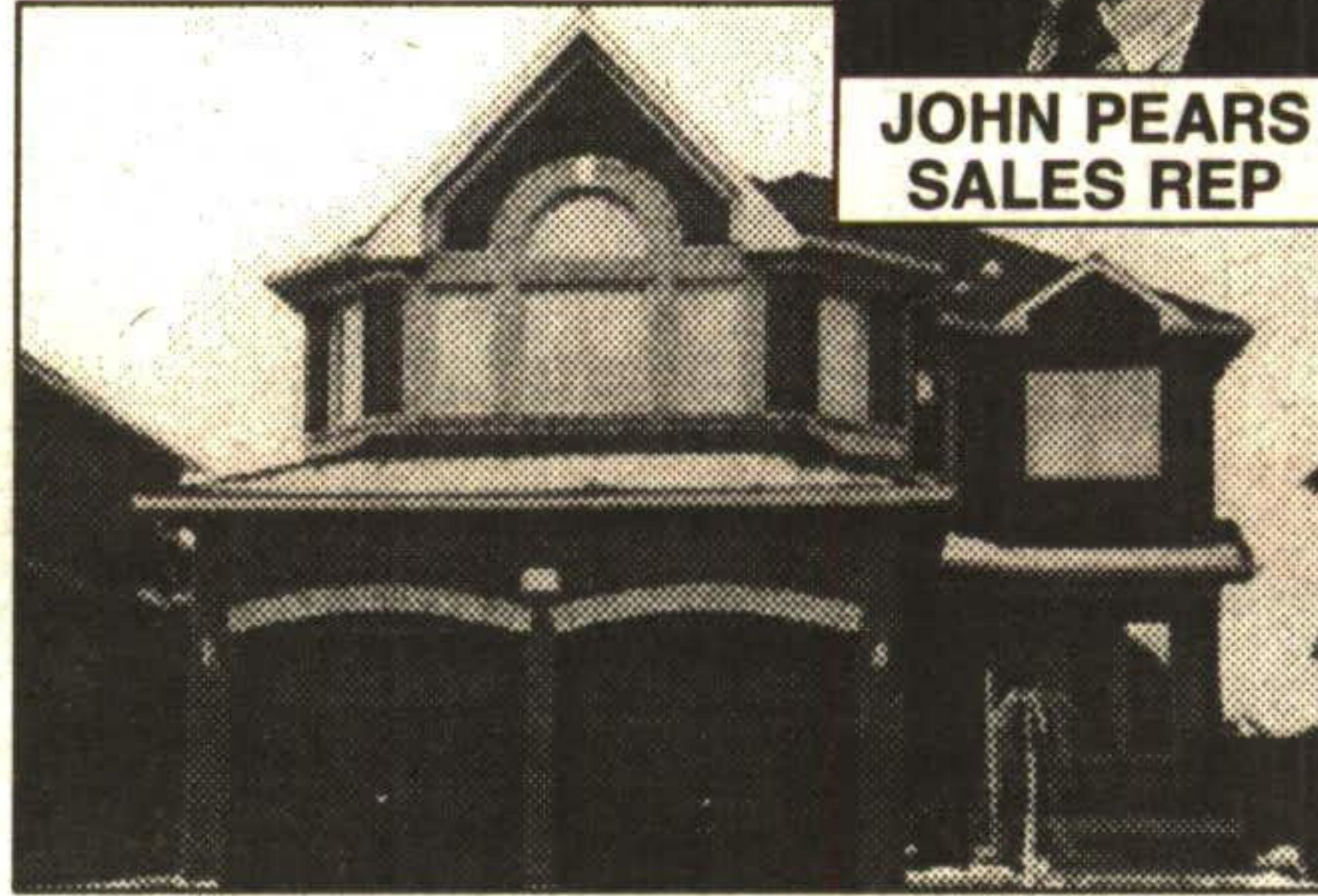
RE/MAX Blue Springs Realty

(Halton) Corp.

MARVYN MORGAN**

(519) 853-2086
or (905) 874-3053

RE/MAX MILTOWNE REALTY CORP.
878-7777



Newly listed, This gorgeous westminster model offers 2,365 sq. ft. of living space, with many upgrades including the kitchen, Gas fireplace in the family room, flooring, and lots more. 4 spacious bedrooms, large main floor family room, 2 car garage, main floor laundry. Amust to see. Listed at \$238,900. Call J.P. at 878-7777.

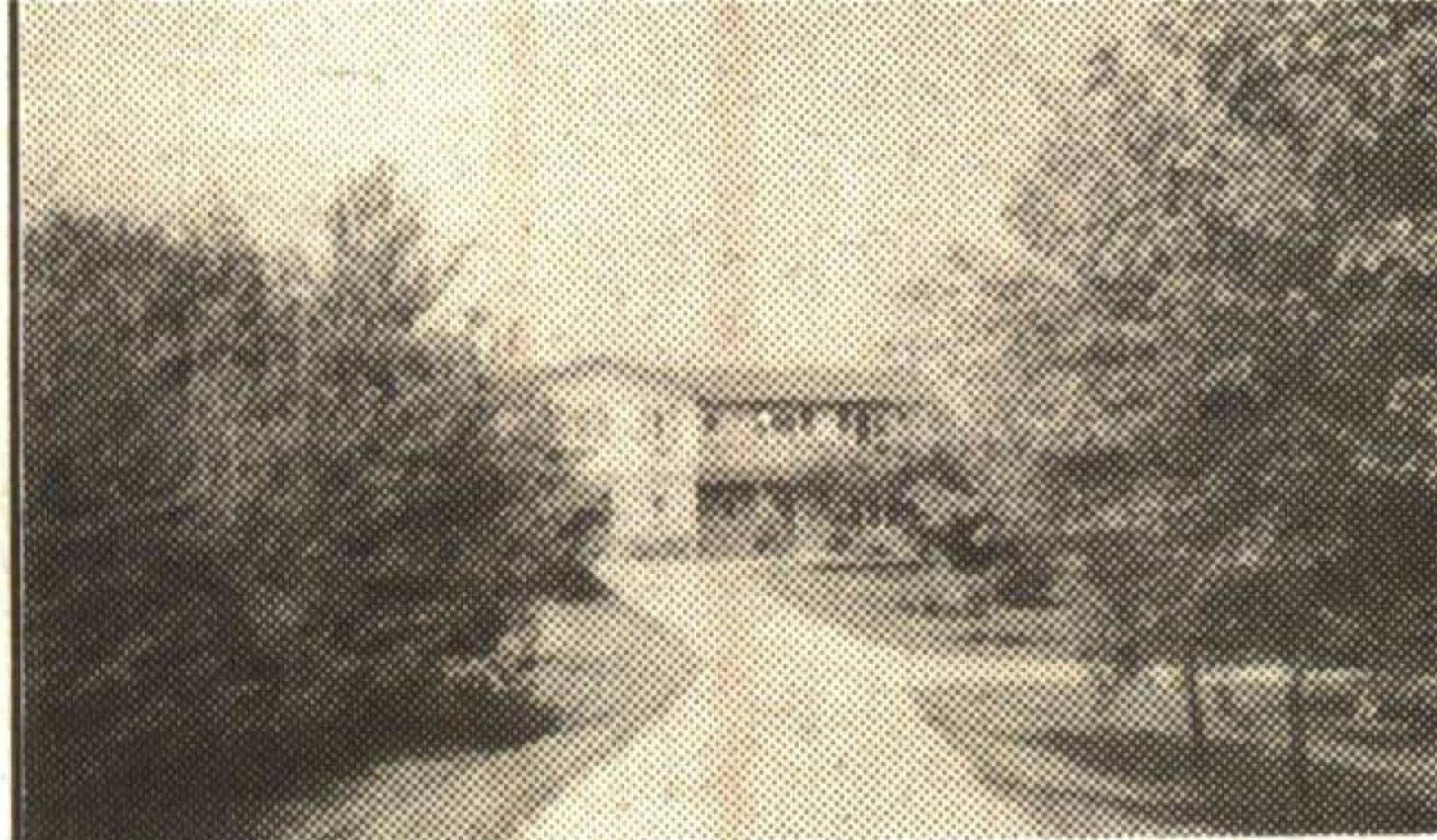


Love Fall In Lovable Homes



A HOME OF DISTINCTION

Quality home on an acre pine treed lot. Custom built 2-storey with approximately 3800 sq. ft. of living space. Huge greenhouse kitchen overlooks private yard. Main floor family room with gas fireplace. Tens of thousands spent on upgrades at the time of construction. Offered for only \$399,900. 20-24



COUNTRY CLOSE TO TOWN

Custom built bungalow just south of Shelburne, Ont. 4.78 acres, wrap around bungalow, with walkout from the living room and dining room. Oak eat-in kitchen, 3 bedrooms, 3 bathrooms, and main floor family room. Huge driveway with full loft. Call to see this home at \$209,900. 20-32

Susan Whitteker* *Sales Rep.

ROYAL LEPAGE 877-0173

ROYAL LEPAGE REAL ESTATE SERVICES LTD., BROKER



OPEN HOUSE

Sunday, Feb. 11
1-4 p.m.

43 Stewart McLaren Rd.



\$138,900

Gorgeous 3 bedroom, 2-1/2 baths townhome, professionally finished rec room and walkout to deck. Living room features track lighting and woodburning fireplace. Immaculate condition. Built-in dishwasher.

Carol

Walraven*

Sales Representative

RE/MAX Suburban (91) Inc.

905-877-5211

1 ACRE IDEAL INDUSTRIAL LAND
M1 Zoning, driveway with culvert in place. Soil sample complete. Good location for industrial or professional building. Close to busy mall. \$119,500.

THE PROMISE BY WILF MOORE

I promise to find a house you can own, If you promise me to make it a home.

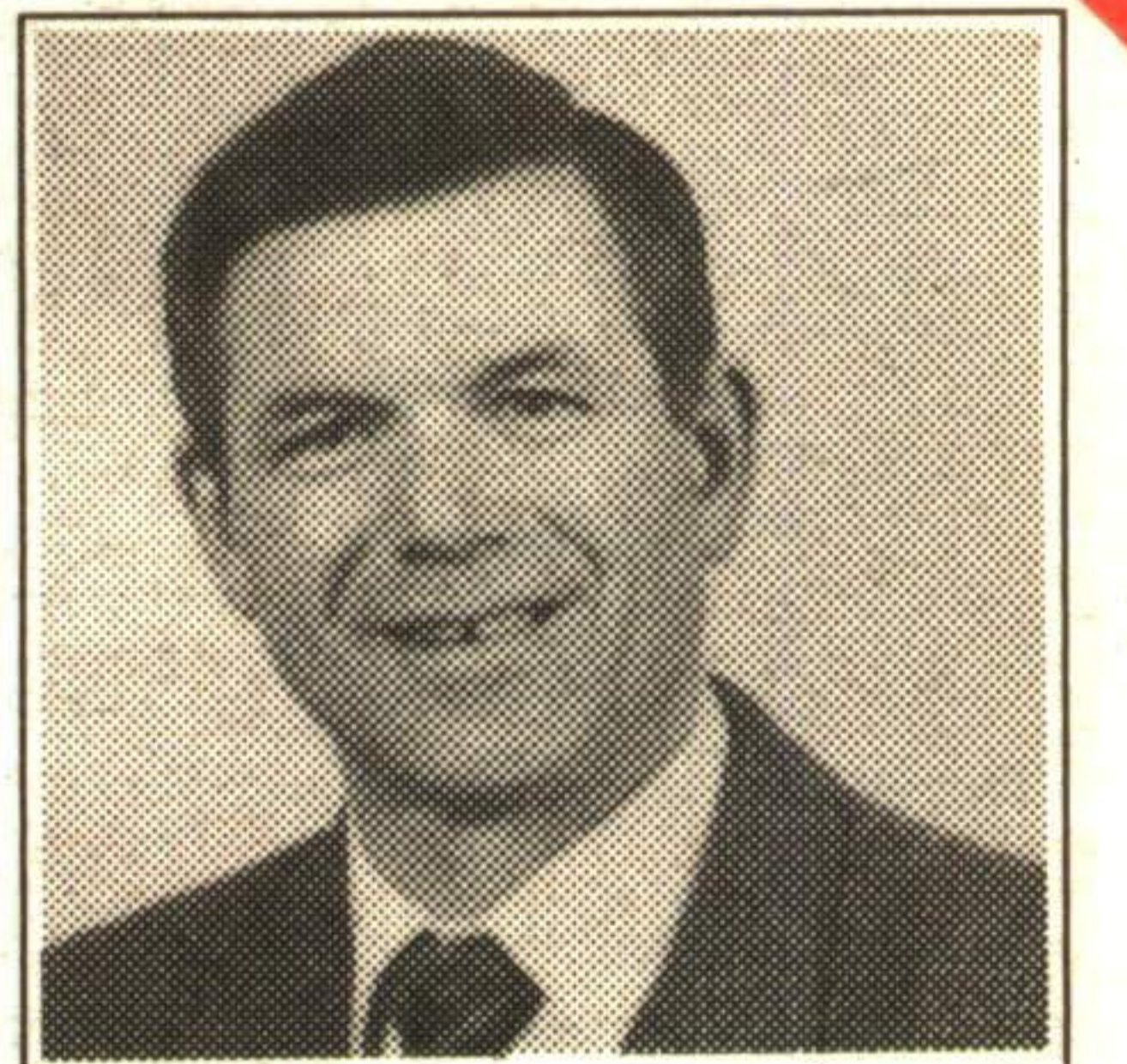
JOHNSON ASSOCIATES HALTON LTD., REALTOR

Independently Owned & Operated

Bus. (905) 877-5165
Erin (519) 833-9714
Tor. (905) 874-3040
Res. (519) 855-4914



247 Guelph St., Georgetown



WILFRED MOORE
*Sales Representative



SPRING START

on this 20+ acre building lot only 15 minutes to Georgetown. Lots of young evergreens and rolling hills. You decide where to build your new home. Vendor will consider holding mortgage. Priced at \$149,000. Call Wilf Moore*. 95-2-540



'GOOD, DEAR, GOOD'

That's how you will feel living in this beautiful home on 3.4 acres of the country just outside of Erin. Large family room with fireplace and glass sliding door from family room and kitchen to new deck. Priced at \$229,000. Call Wilf Moore*. 95-2-222



AUTO REPAIR SHOP

with your home and lots of room to have donut shop, restaurant, etc. 2 acres prime location, corner lot on busy highway. Got a plan? Call Wilf Moore* to discuss. 95-2-445



TIME TO RELAX

Live in one and rent the other apartment or how about your own retail business on this Main Street location in a busy community? Call Wilf Moore*. 96-116



FOR THE GROWING FAMILY

4 + 1 bedrooms, 3 bathrooms, eat-in kitchen, water softener, 100 x 165 ft. lot, rec room with woodstove, double garage. Small community, quiet area of town, living at its best. Priced at \$164,000. Call Wilf Moore* to view. 95-2-587

OPEN HOUSE SUN. FEB. 11 1 - 4 PM
9 TOMWELL CRES., ERIN
Directions: Main St. to Dundas West to Tomwell

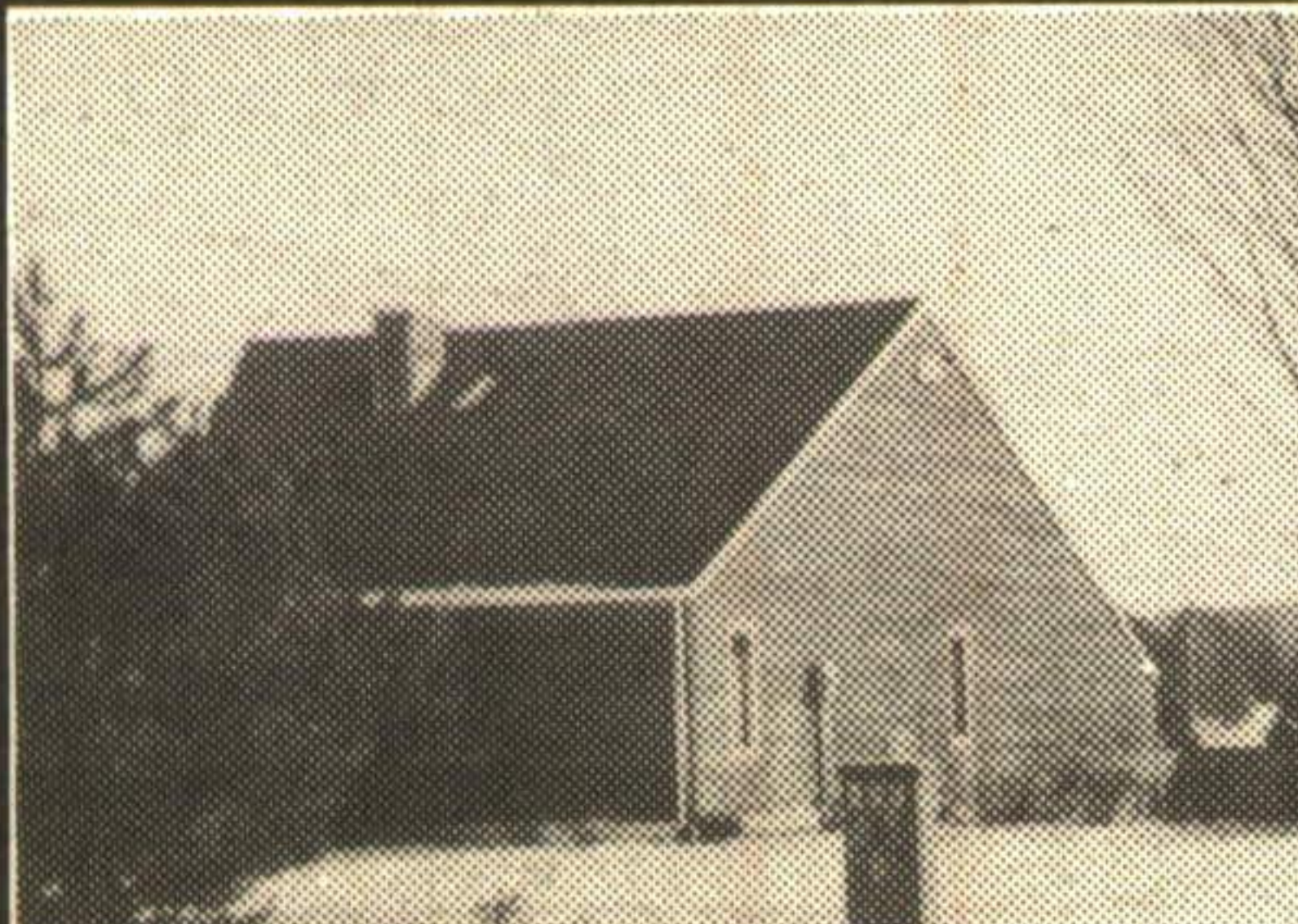
ERIN BEAUTY

4 bedroom, 2 storey gem. Large main floor family room with fireplace. Lovely yard backing onto school playgrounds. Walk to all amenities. Two car garage and more. Call Wilf Moore*. \$167,500. 96-141



VIEW OF LAKE

just across the road and only 20 minutes to Georgetown. Enjoy this cottage in this park-like setting with two bedrooms, large lot, heated workshop. Must be sold. Try your offer. Call Wilf Moore*. 96-129



NEED MORE SPACE?

How about this two bedroom home on 3/4 acre property, overlooking lake from large deck at back of home. Beautiful bright kitchen with walkout and a full unspoiled basement. Don't delay, call Wilf Moore*. 95-2-576



YES "A REAL FARM"

78+ acres, large bank barn, guest house, 1850's log home, ponds, brook through back of property and oh yes, check out the million dollar view. Call Wilf Moore* to inspect. 95-2-627



AVOID WINTER...

and avoid travelling to and from work. Start your own retail business in this Main Street location in a busy little community. Beautiful apartment upstairs. Great potential. Call Wilf Moore*. 95-2-663



BUILDING LOTS

on the Mira River, Cape Breton Island, Nova Scotia. Starting at \$18,900. Call Wilf Moore*. 95-2-586