



**DON SARGENT**

F.R.I., C.R.F.  
Associate Broker

**877-5165**

**874-3040**

24 Hour Pager  
247 Guelph St.  
Georgetown

*"Listing and Selling  
Real Estate in Halton  
since 1966"*

**SOLD**  
**JOHNSON ASSOCIATES**  
HALTON LTD., REALTOR  
Performance Counts



**GREAT LOCATION**

Walk to town from this 103 acre farm or walk in your own bush and ravine, paved road, brick house, ideal hobby farm with future potential. Asking \$499,000. Call Don Sargent\*\*. 95-2-455

**62 ACRES**

South of Belfountain, paved road, rolling land, 1200 + ft. deep, great building site within 1 hour of airport, Mississauga, etc.... 95-2-600



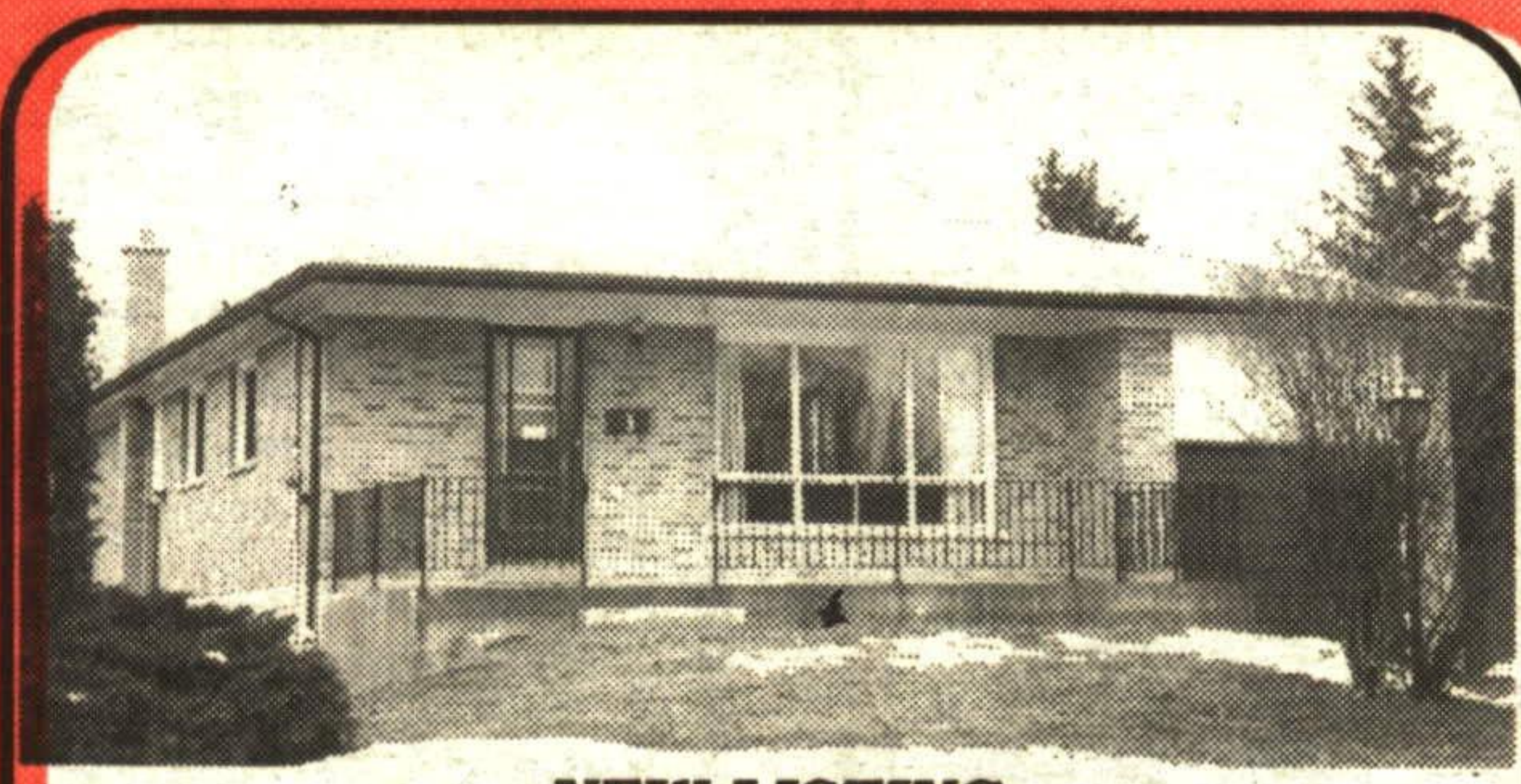
**GLEN WILLIAMS**

Attractive stone & brick bungalow in village setting, 2 fireplaces, I/G pool, main floor den or office and CAC. Offered at \$259,000. Call Don Sargent\*\*. 95-2-386



**OFFICE FOR RENT**

Central Georgetown, bright corner suite, private washroom, kitchenette, approx. 500 sq. ft. Ask for Don Sargent\*\*. 95-2-660



**NEW LISTING**

Well located bungalow, early occupancy available, hardwood floors, fenced yard, garage, large kitchen, priced to sell at \$165,900. Call Don Sargent\*\* at 905-874-3040. 96-126

**BUYING OR SELLING?**

Call for a professional opinion based on 29 years experience in our local real estate market.

**SPRING**

**INTO A NEW HOME**

**"FROM START"**

**"TO FINISH"**



**WE'VE GOT IT ALL!**

\*Ground floor unit \*Over 1000 sq. ft.  
\*Ceramics, window coverings & more  
\*Roomy den, laundry room and storage  
Call Elizabeth Doell\* today...there's more.  
\$121,900. 95-2-609



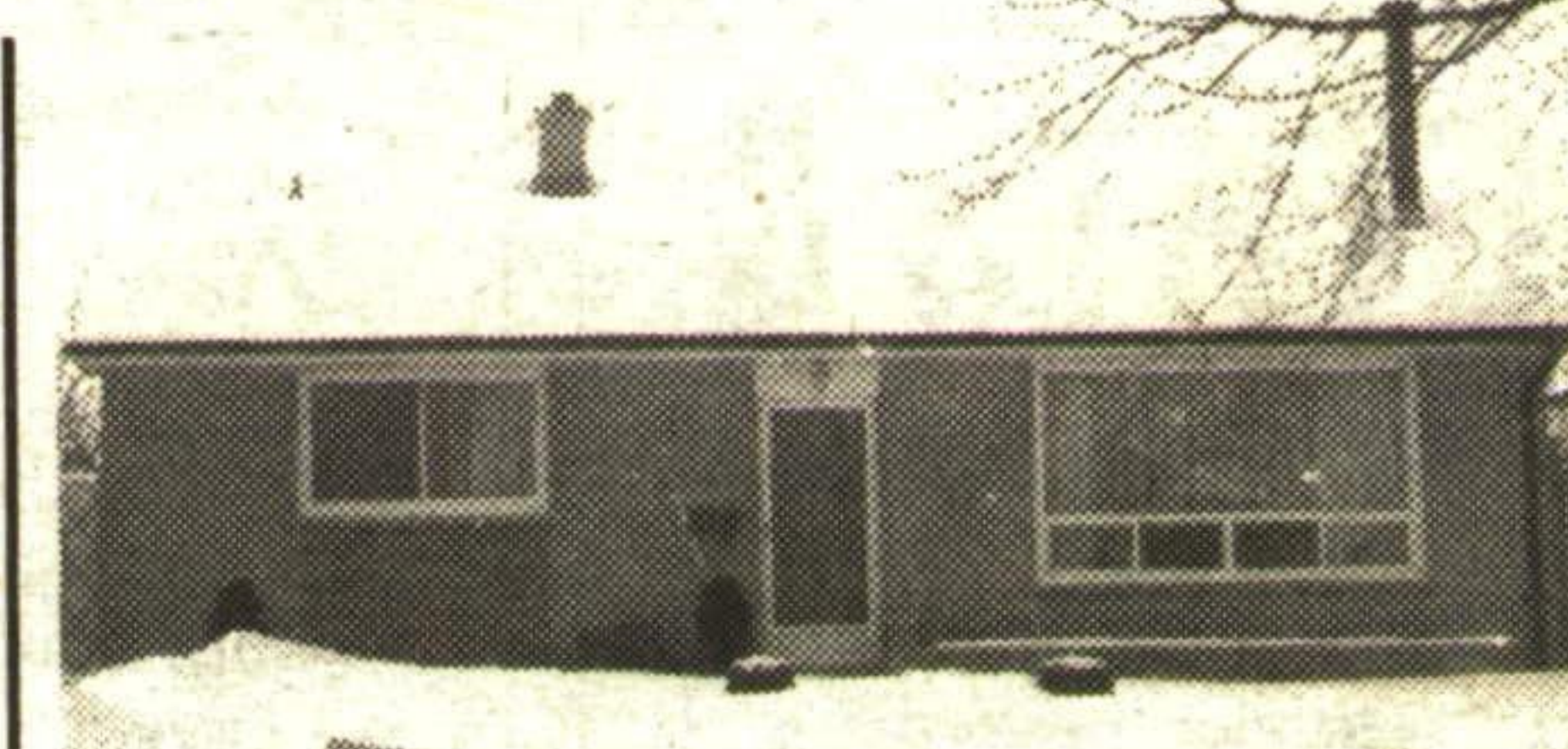
**OPPORTUNITY KNOCKS...**

...Open the door to a new lifestyle in the exclusive Royal Ascot. This ground floor unit has 1 bdrm plus a den and includes the use of the buildings many amenities. Call Elizabeth Doell\* for more details. \$117,900. 96-119



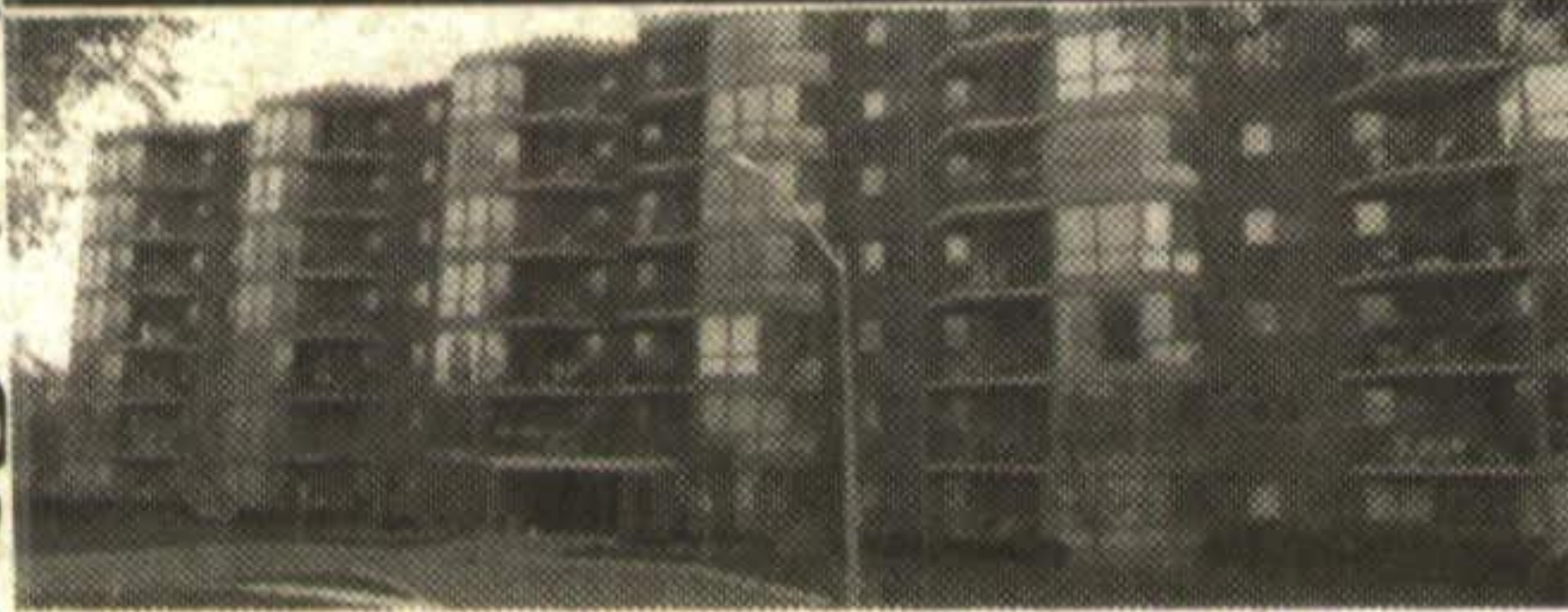
**AFFORDABLE**

\* 2 Bedroom \*Gas Fireplace  
\*2 Parking Spots \*Carries as Rent  
\$99,900. 95-2-602



**SUPER RETIREMENT HOME**

\*Close to Shopping \*Loads of upgrades  
\*Fireplace in living room \*Cathedral Ceilings  
\*\$158,900. 96-112



**LUXURIOUS LIVING**

If you've always wondered if condo living was for you...Look no further. This beautiful 2 bdrm unit is located on the prime south east corner in the exclusive Royal Ascot. Call Elizabeth Doell\* today for a list of all the features! \$136,500. 96-127



**ROOMY CHARTWELL**

\*All the upgrades  
\*Gorgeous Kitchen with w/o to private yard  
\$119,900.  
Call Elizabeth Doell\*. 96-120



**BUNGALOW IN PARK AREA**

\*Walkout lower level \*2 Fireplaces  
\*Huge Lot, Overlooks Park  
\$203,900. 95-2-629



**EXCLUSIVE COURT LOCATION**

\*Ideal Family Home  
\*Immaculate condition  
\*High eff. furnace with central air in '94  
\*\$233,900. 95-2-639



Elizabeth Doell\*  
Res. 873-3938

247 Guelph Street,  
Georgetown

**SOLD**  
**JOHNSON ASSOCIATES**  
HALTON LTD., REALTOR  
Performance Counts

**(905) 877-5165**

Tor. Toll Free (905) 874-3040

Erin (519) 833-9714

24 Hour Pager



Marilyn Worrall\*  
Res. 873-0650