



CAROL McMURRAY*
877-5165
 Tor. 874-3040

24 Hour Pager
 *Sales Representative



JOHNSON ASSOCIATES
HALTON LTD., REALTOR
 Independently Owned & Operated



STUNNING RAVINE PROPERTY

On popular Georgetown court, all the bells & whistles, gorgeous addition overlooks ravine, CAC, CVAC, windows replaced, Euro style kitchen. Call **Carol McMurray***. 95-2-634

SPACIOUS SIDESPLIT

On almost 1 acre on the edge of town. Immediate possession is possible. \$219,000. Call **Carol McMurray*** today. 95-2-616



3+ ACRES AT TERRA COTTA

Unique estate property with stream, ravine and endless trails. Fabulous 4 bedroom custom home. Hardwood floors, FP in LR, cathedral ceiling & much more. Immaculate home must be seen. \$289,000. **Carol McMurray*** has the info. 95-2-298



IF NEIGHBOURHOOD IS IMPORTANT

Exclusive 2 storey in desirable area - prime lot - home in mint condition. Call today for your appointment to view. Call **Carol McMurray***. 95-2-520

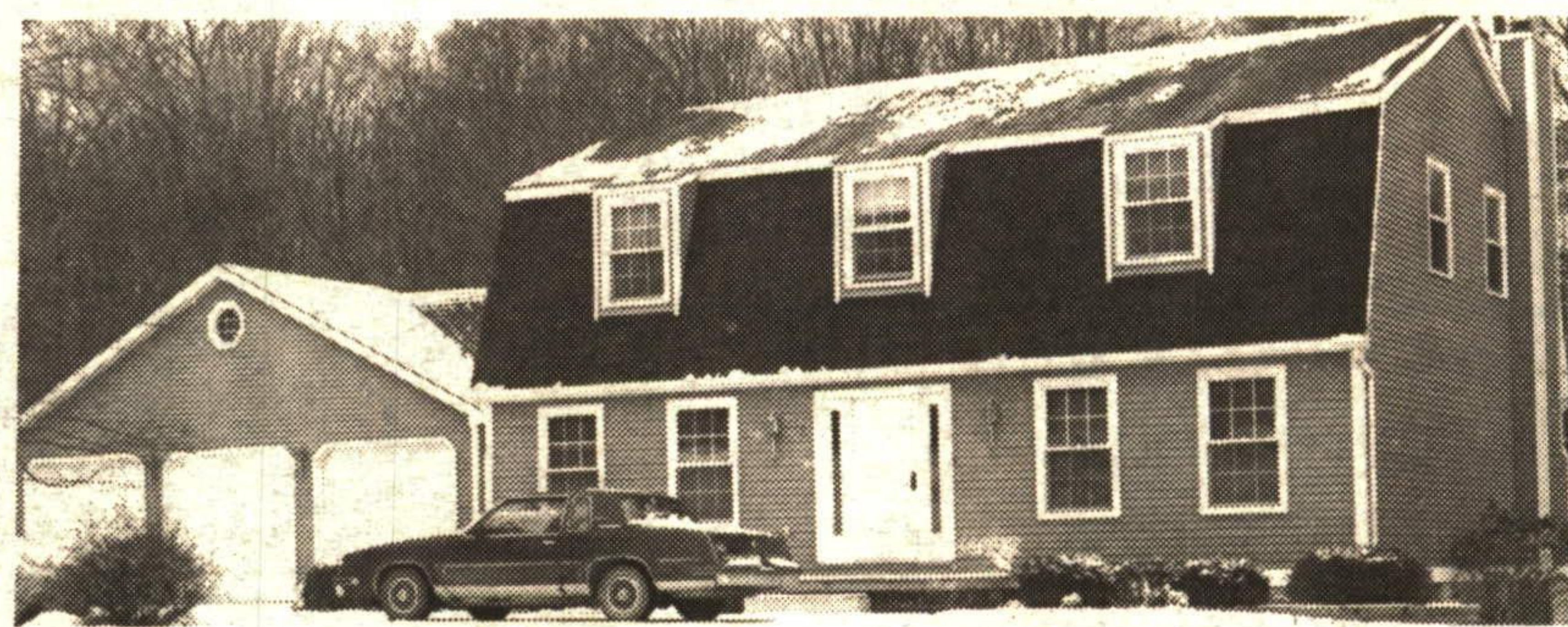
HARDWOOD BUSH . . .
15 Acres
Edge of Georgetown
\$149,900



LOOK FOR YOUR NEW HOME HERE IN THE REAL ESTATE Marketplace

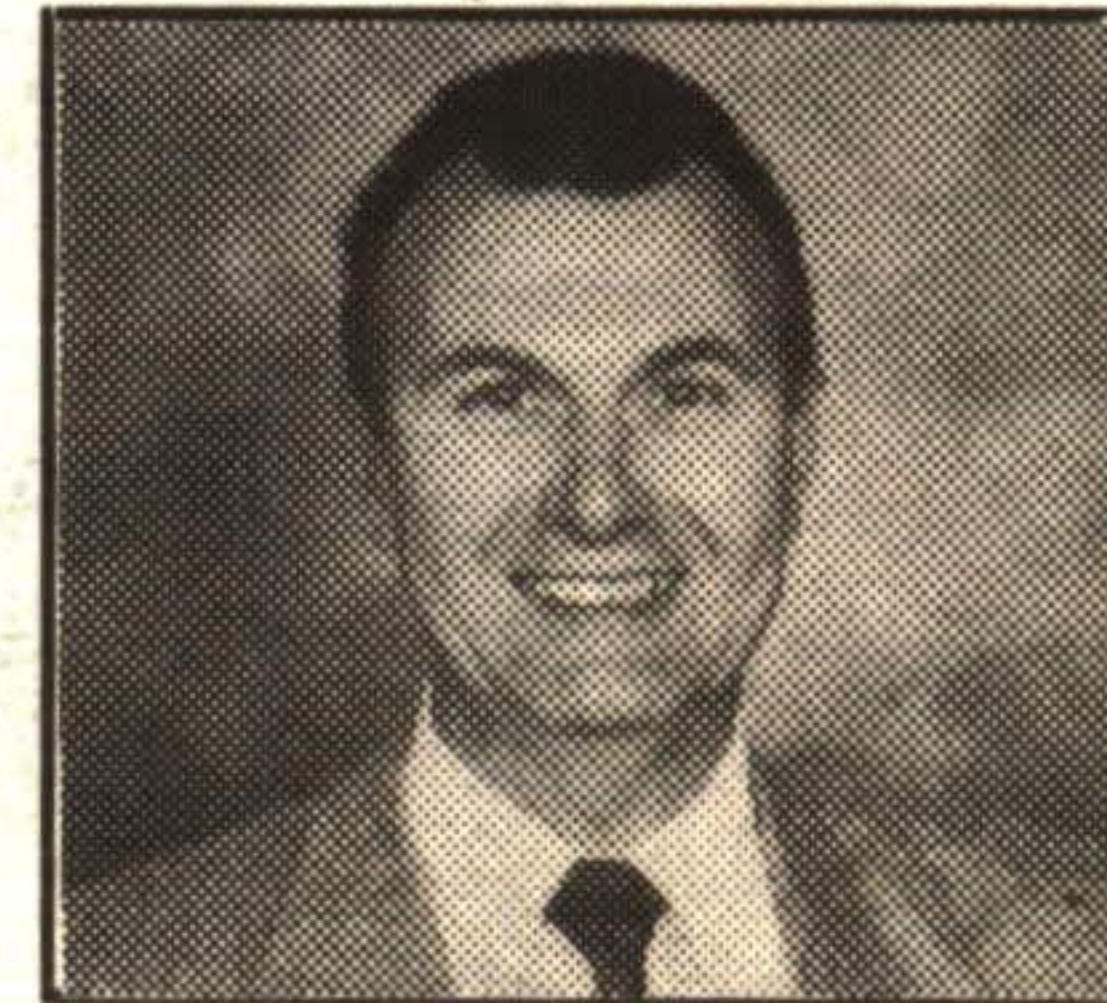


NEW PRICE



Located on 2.39 acres wooded lot in Erinwood Estates. Custom built "Dutch Colonial" style 2 storey, 4 bedroom family home. Master bedroom has ensuite with jacuzzi. Large country kitchen with pine cupboards, family room with fireplace & walkout to deck. Full unfinished basement. Walkout to backyard. 3 car garage. \$299,900. Call Jack Zitman*.

Jack Zitman*, Sales Rep.
877-5211 or Res. 877-8498



Re/Max Suburban (91) Inc.

• Call Jessie • Call Jackie • Call Jessie • Call Jackie



Jackie Greenwood*
 Sales Representative
 24 hr. pager

JOHNSON ASSOCIATES
HALTON LTD., REALTOR

247 Guelph St.
 Georgetown

877-5165



Jessie Jacobs*
 Sales Representative
 24 hr. pager

OPEN HOUSE



This 3 bedroom sidesplit, nestled on 1 acre close to Georgetown is reminiscent of the sixties in character - LOTS OF POTENTIAL! Asking \$212,777. 95-2-538

SUN. JAN. 21st
2:00 - 4:00 p.m.

Hosted By:
Jackie Greenwood
 Located on 8th Line of Halton Hills, north of Steeles Ave between 5th and 10th Sideroads



BALLINAFAD BEAUTY ON 1 ACRE

Live in luxury and comfort in this beautifully appointed home with large principal rooms and stunning kitchen. Situated on one acre. Call for more details. Asking \$324,900. 95-2-643



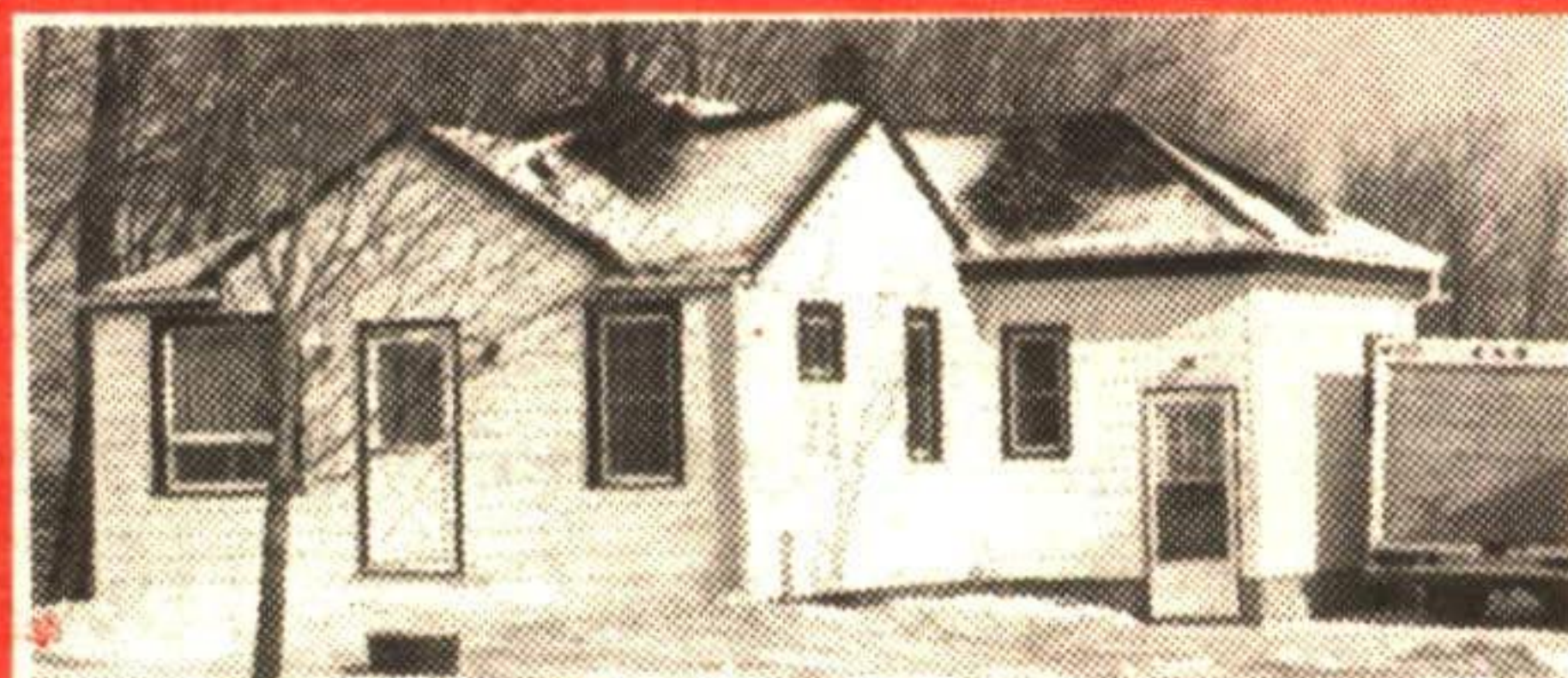
WALK TO PLAZA

Conveniently located 3 bedroom bungalow with upgraded kitchen cupboards, walkout from dining room, single garage. Asking \$169,585. 95-2-637



NEW FAMILY WANTED!

Bring this 3 bedroom sidesplit back to life with the noise of children! Large eat-in kitchen, finished basement. Super large fenced lot. Asking \$165,900. 95-2-456



COUNTRY STARTER

OR retirement home, well maintained, 3 bedrooms, separate dining room. Located for easy commuting. Asking \$129,900! 95-2-655



NEW ADDRESS - NEW YEAR!!

Great family home - 4 bedrooms, 1-1/2 baths, eat-in kitchen, finished basement, walkout from dining room to deck, large fenced lot - a bargain!! Asking \$164,900. 95-2-611



ENGLISH TUDOR

Over 3000 sq. ft. of quality construction, lovingly maintained. 4 bdms, huge master with ensuite, sunken conservatory room, huge kitchen, 60 oz. broadloom, upgraded lighting fixtures, gracious living room. This is the home for your future. Call Jessie* or Jackie* today. 96-114

• Call Jessie • Call Jackie • Call Jessie • Call Jackie