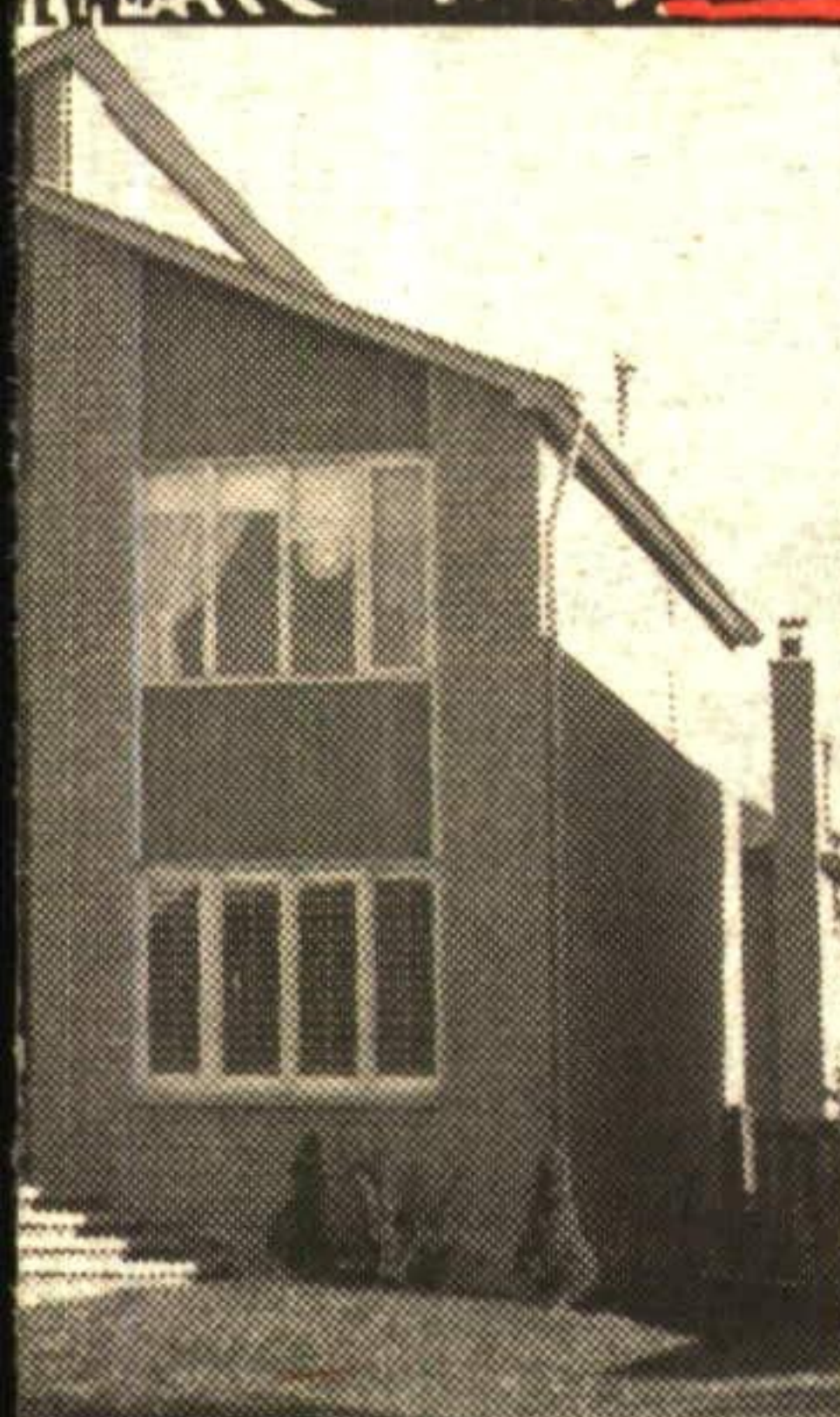
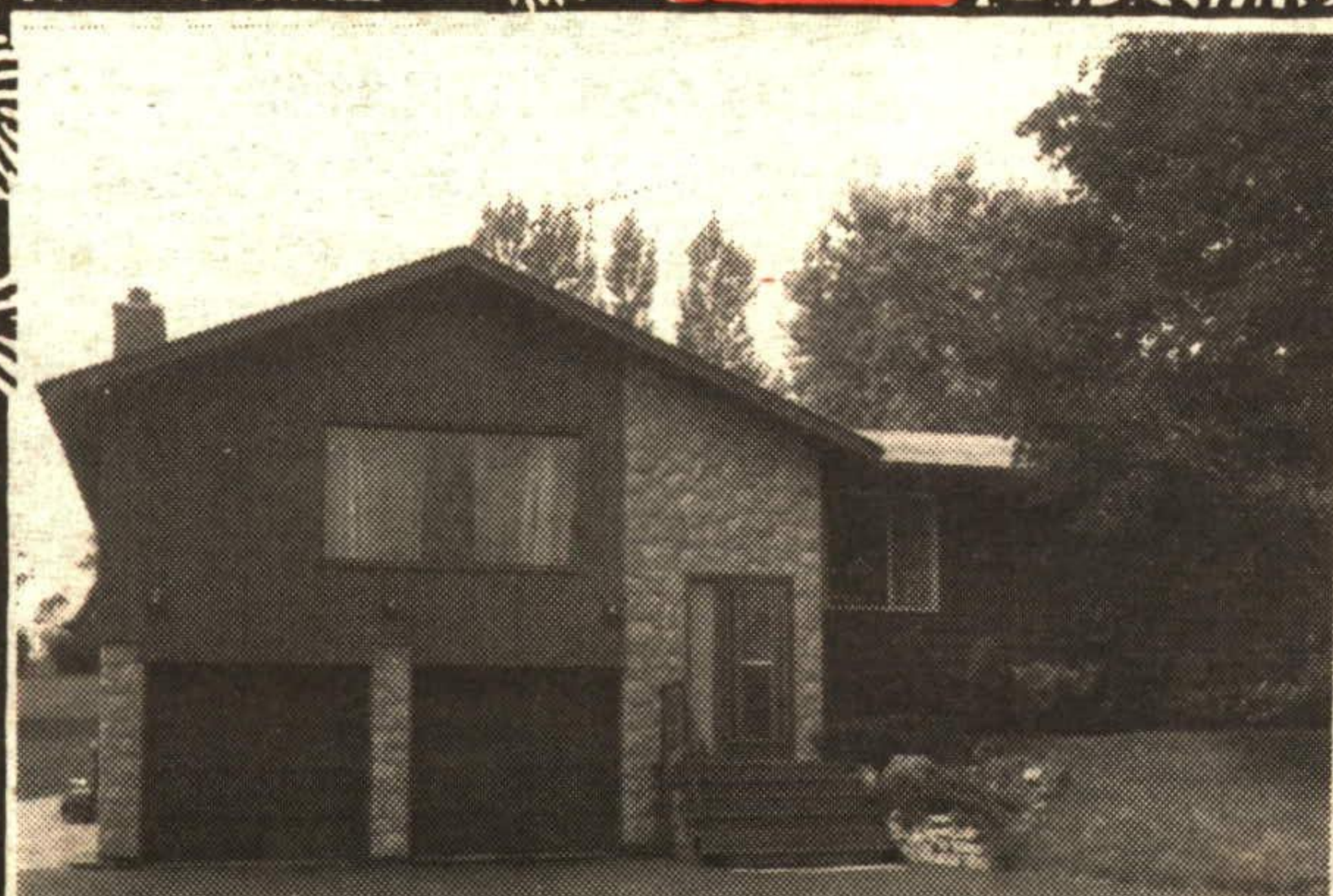


# A home you'll love!



**REDUCED!!**  
**SOUTH**  
 This 2500 sq. ft. home. Den, family room with fireplace. Call for details \$213,900. 95-2-563  
 Call Ed Wood, Sales Rep.  
 JOHNSON ASSOCIATES Halton Ltd., Realtor



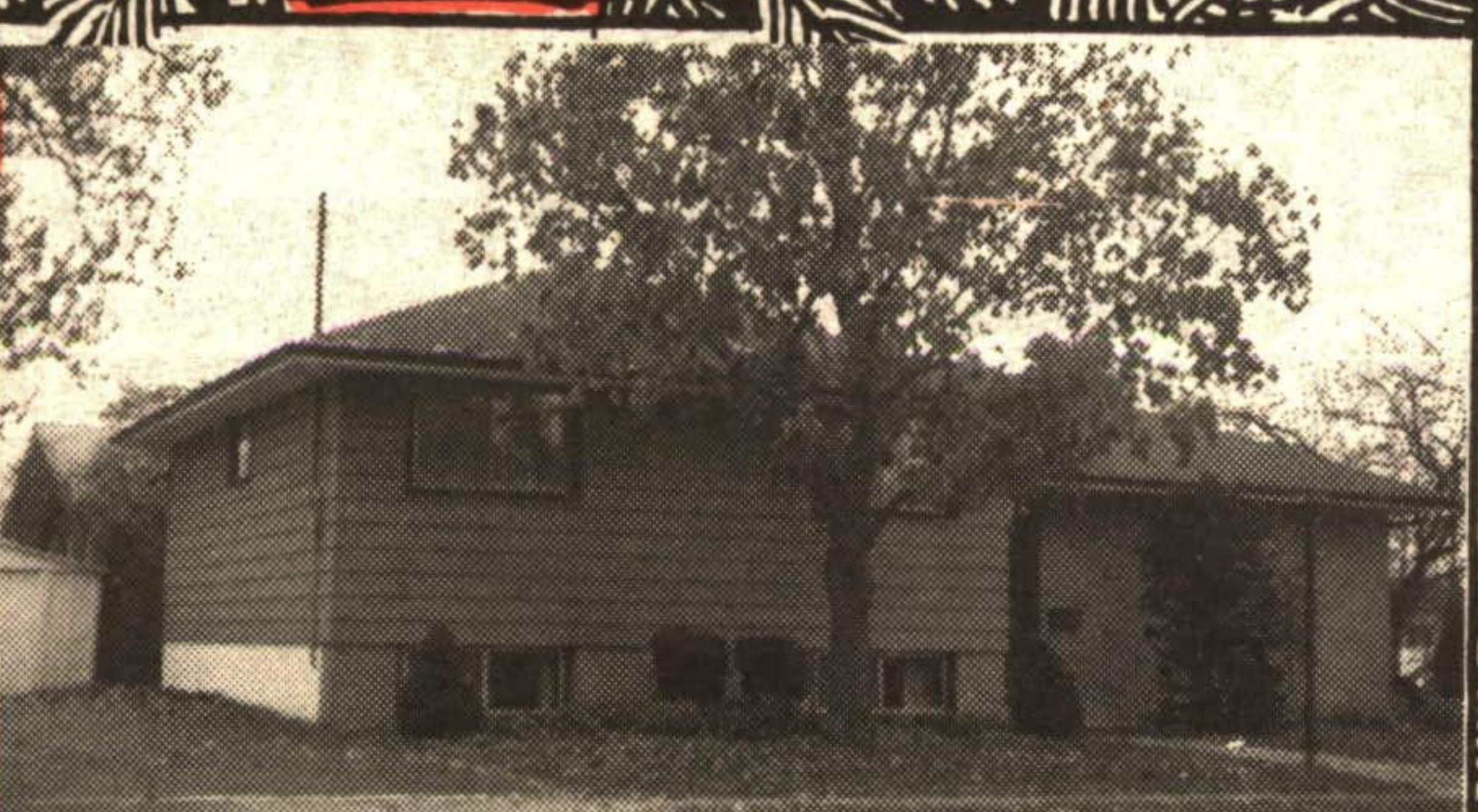
**13 ERIN ACRES**  
 This lovely high & rolling land parcel backs onto a management forest area with delightful nature trails. The solid & spacious residence features a 35' x 25'. Great room with cathedral ceiling, hardwood floors and hearth warming gas fireplace. Located on paved road 15 mins. from Georgetown & mins. only to village schools, shopping, tennis and Caledon Ski Club. 95-2-508  
 Call Tom Comery, Sales Rep.  
**JOHNSON ASSOCIATES Halton Ltd., Realtor**  
**877-5165**



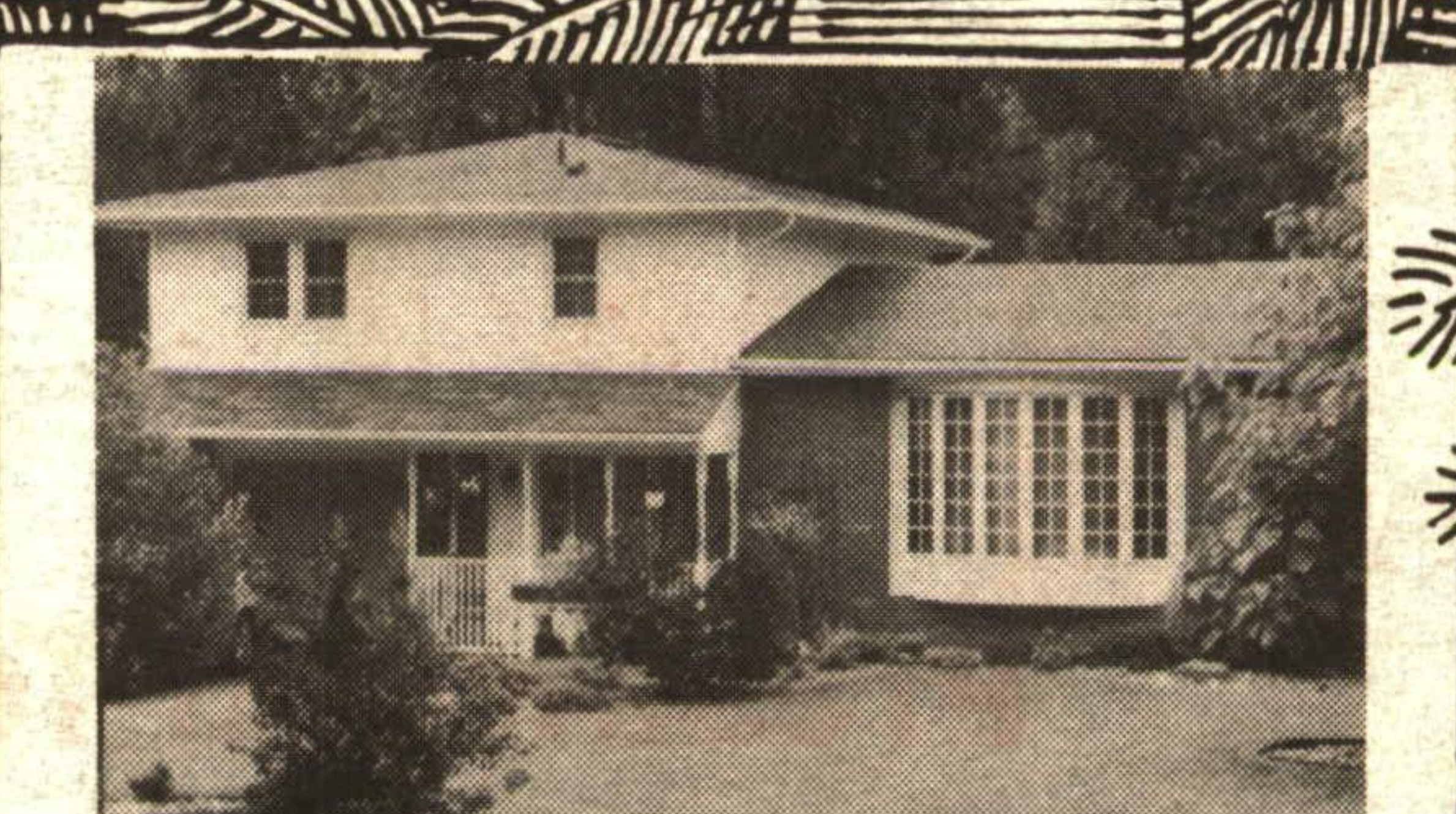
**BARGAIN HUNTERS**  
**SPECIAL HOUSE SPECIAL PRICE**  
**SPECIAL BONUS OFFER**  
 Call Now! 95-2-379  
 Call Ed Wood, Associate Broker  
**JOHNSON ASSOCIATES Halton Ltd., Realtor**  
**877-5165**



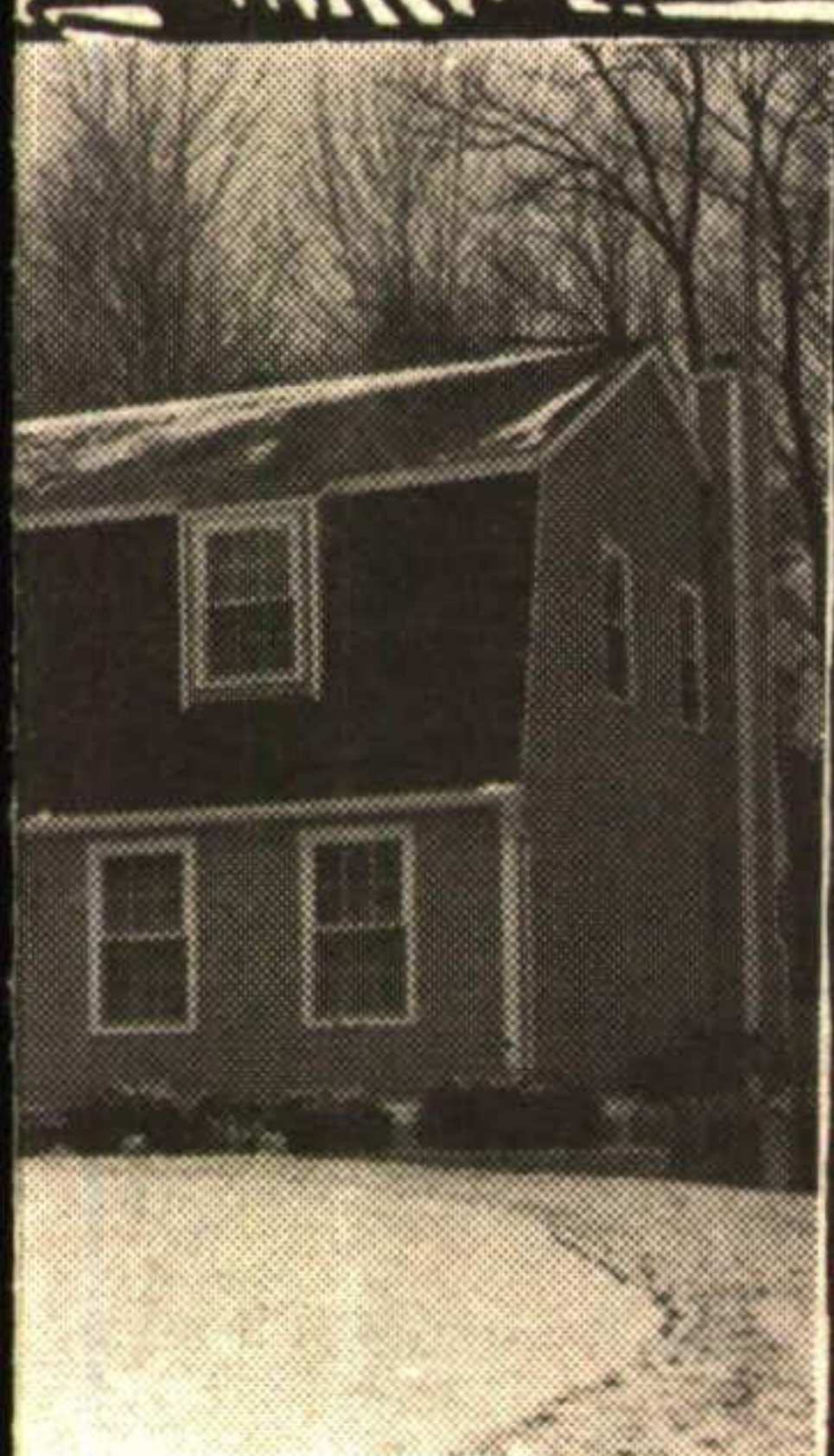
**ERIN ACRES., FERGUS**  
 9 - 2-4 p.m.  
**CALL DO**  
 Religious Legacy Estates. Only 15 mins. from Fergus - take Garafraxa St. E. to Wellington Rd. (Wellington County signs).  
 Call Ed Wood, Sales Rep.  
**JOHNSON ASSOCIATES LIMITED**  
**877-5165**



**"CHRISTMAS SPECIAL!" \$161,900**  
**"MOVE IN BEFORE SANTA ARRIVES!"**  
 Cosy, well maintained 4 bedroom split level. Upgraded oak kitchen and main bathroom. Spacious recreation room with gas fireplace, 3 piece bath. Broadloom over hardwood, 5 appliances, central air, short walk to Georgetown Market Centre. Priced to sell! RM324-95  
 Call Ursula Zeidler, Sales Rep.  
**RE/MAX Suburban (91) Inc.**  
**877-5211**



**BORDERING THE CREDIT!**  
 A superb lot of about 1 acre with masses of mature trees and 125 ft. frontage on the Credit River in beautiful Glen Williams. This comfortable 3 bedroom home is for the family that wants the pleasures of country living with the conveniences of a nearby town and easy commuting to Brampton, Mississauga and Toronto. Call me now for details on this rare opportunity.  
 Call Jane Hughes, Sales Rep.  
**RE/MAX Brampton Inc.**  
**(905) 456-1000**



**ERIN ACRES**  
 Custom built "Dutch Colonial" home. Master bedroom with walkout to pine cupboards, family finished basement. Walkout to garage. Call for details RM317-95  
 Call Ed Wood, Sales Rep.  
**JOHNSON ASSOCIATES (91) Inc.**



**NEW**  
**VILLAGE LOCATION**  
 Spacious 4 bedroom home with great potential. Large principle rooms, playroom, office, main floor laundry, living room with tongue & groove pine wainscotting. Huge lot, idyllic views, 2 car garage, easy commute.  
 Call Jean Cooper, Sales Rep.  
**ROYAL LEPAGE REAL ESTATE SERVICES**  
**Caledon 874-3086**



**\$263,889**  
**LIVING AT ITS BEST!**  
 A rare offering on the ravine - nature at your doorstep. Lovely townhouse with updated broadloom, 2 walkouts & 5 appliances. Listed at \$149,000. 95-2-559  
 Call Elizabeth Doell, Sales Rep.  
**JOHNSON ASSOCIATES Halton Ltd., Realtor**  
**877-5165**