

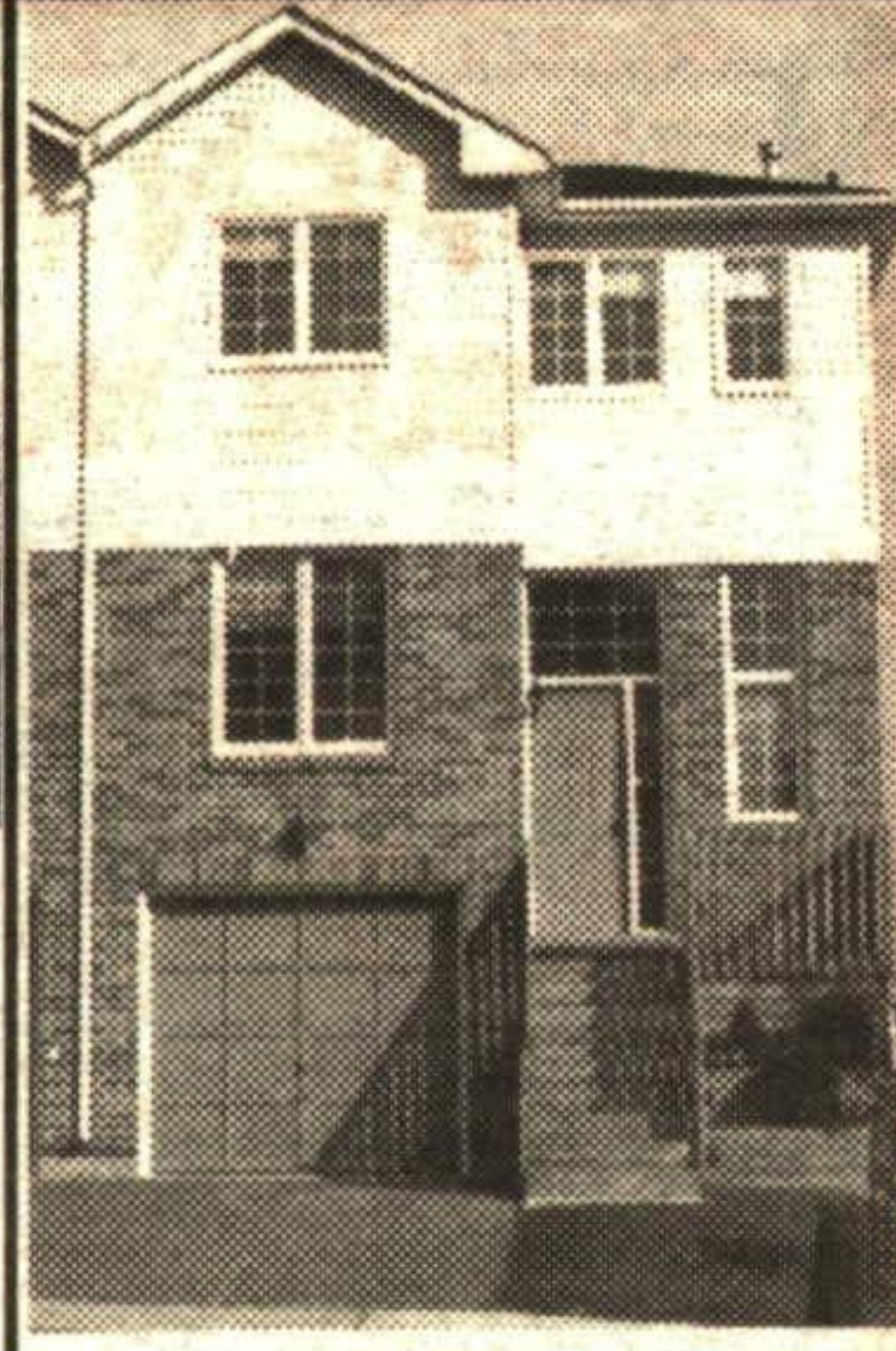
RE/MAX SUBURBAN (91) INC.

DOUG MEAL* RE/MAX DOUG MEAL*



10 ACRES - \$225,000

Brick bungalow located on 10 acres, 20.25 minutes to 401, finished basement, mostly new windows, above ground illegal apartment. DOUG MEAL* RM311-95



BIG BRIAR TOWNHOUSE

Largest style in complex. Separate kitchen, gas fireplace in living room, basement rec room walkout to deck. Entrance to garage, large ensuite. \$142,900. DOUG MEAL* RM297-95

RE/MAX SUBURBAN (91) INC.

Doug Meal*, Sales Rep.

Re/max Suburban (91) Inc.

877-5211

Tor (905) 874-3051
Erin (519) 833-7117



DOUG MEAL* RE/MAX DOUG MEAL*

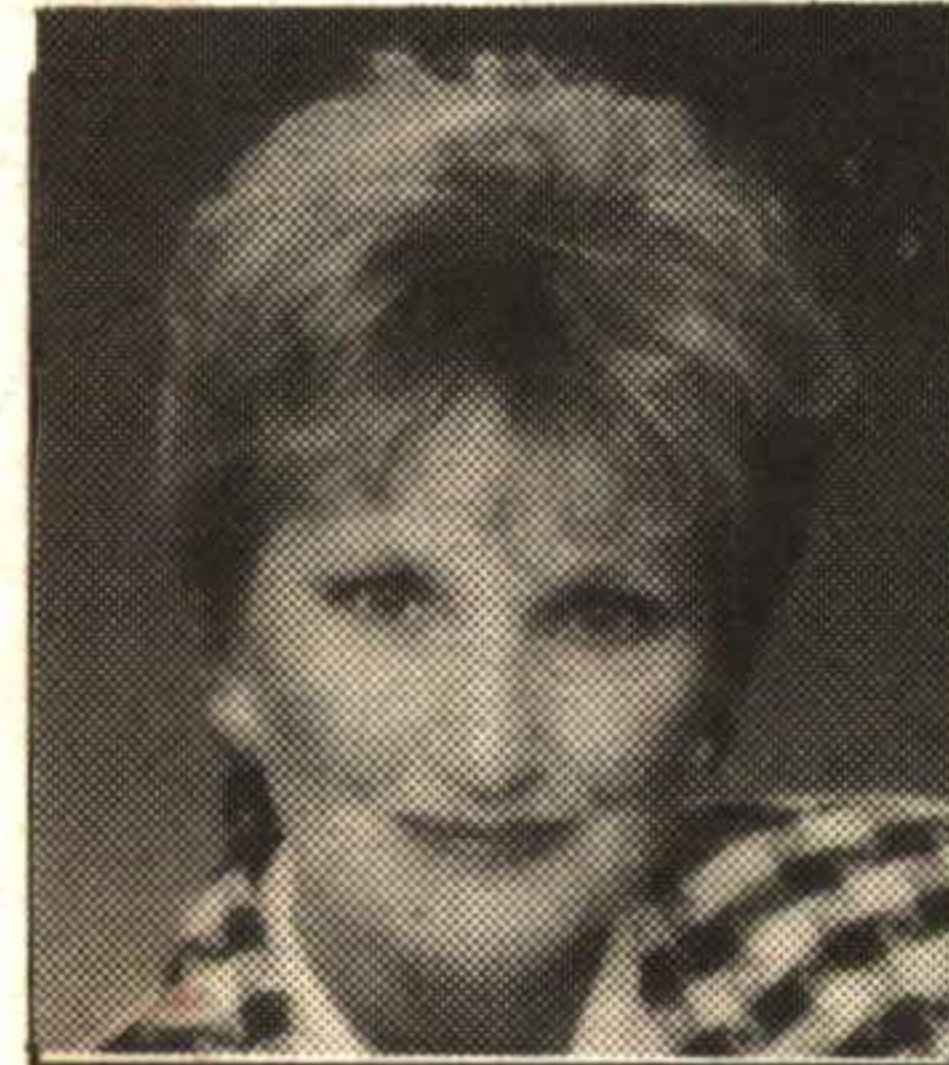
**** OPEN HOUSE ****

Sunday, Nov. 5th, 2-4 p.m.



19A Wylie Circle

- Follow the signs from Maple and Mountainview Rd. N.
- Drop by and warm yourself by the fireplace
- Enjoy the homey atmosphere
- Look forward to your visit



MARILYN WORRALL
Sales Rep.

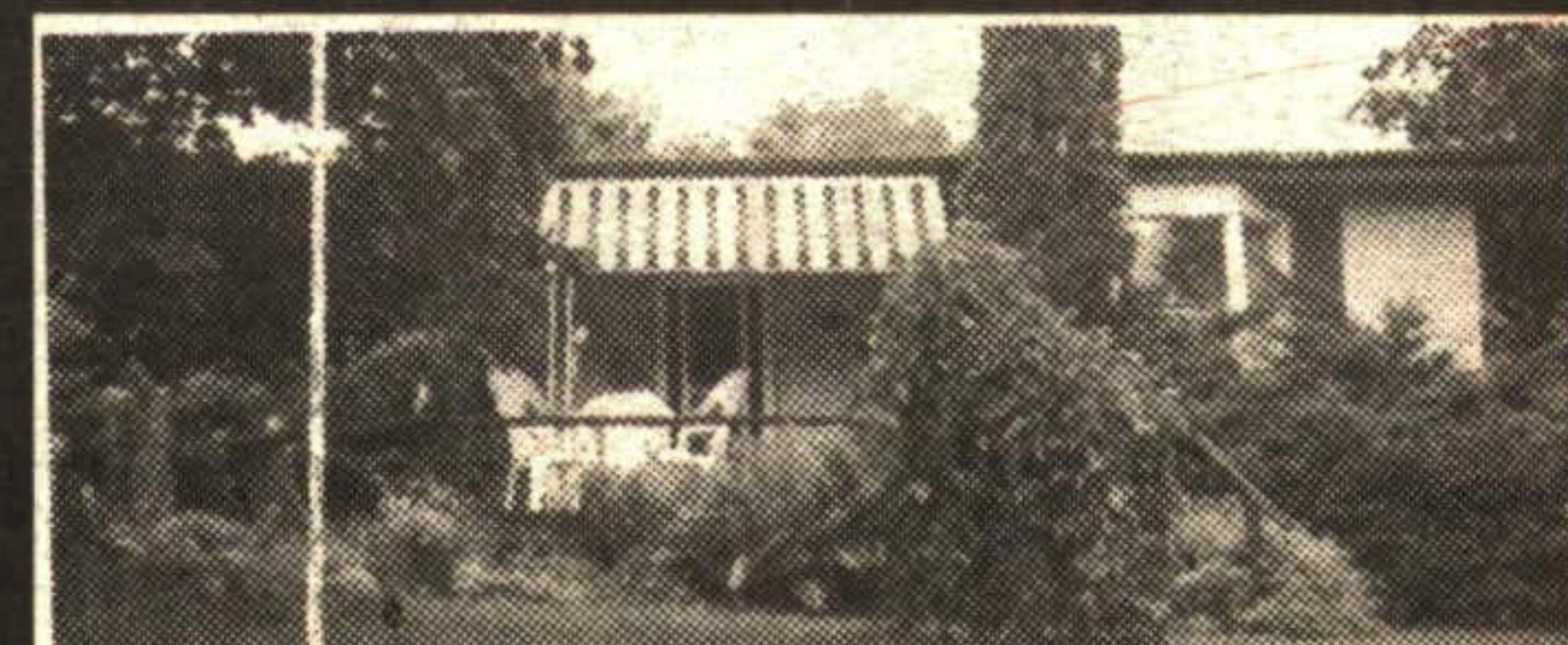
JOHNSON ASSOCIATES HALTON LTD., REALTOR
Independently Owned & Operated

Bus. 877-5165
Erin 833-9714
Tor. 874-3040

247 Guelph Street



FIRST TIME BUYERS CHECK IT OUT
Excellent backsplit in desirable Moore Park, close to school and shopping. Beautifully maintained, refinished hardwood floors on the main levels. Large eat-in kitchen, generous size bedrooms, fully finished rec room and mature treed yard. Many upgrades over the years, modern decor. Clean and bright at \$177,900. 20-31



ENJOY THE FALL LEAVES CHANGING COLOUR
From your own front step. Private landscaped, almost 3/4 acre lot surround this quality bungalow situated on one of Georgetown's finest streets. Beamed cathedral ceiling in living and kitchen. Many other unique features. Offered for only \$234,900. 20-25



ESTATE SUBDIVISION IN ERIN
Remarkable custom built approximately 3850 sq. ft. home on an acre estate lot among the pine trees. Tens of thousands spent on upgrades at the time of construction. This is truly a magnificent home that is sure to please the most discriminating purchaser. Offered for only \$399,900. 20-24

Susan Whitteker*

*Sales Rep.

ROYAL LEPAGE 877-0173

ROYAL LEPAGE REAL ESTATE SERVICES LTD., BROKER



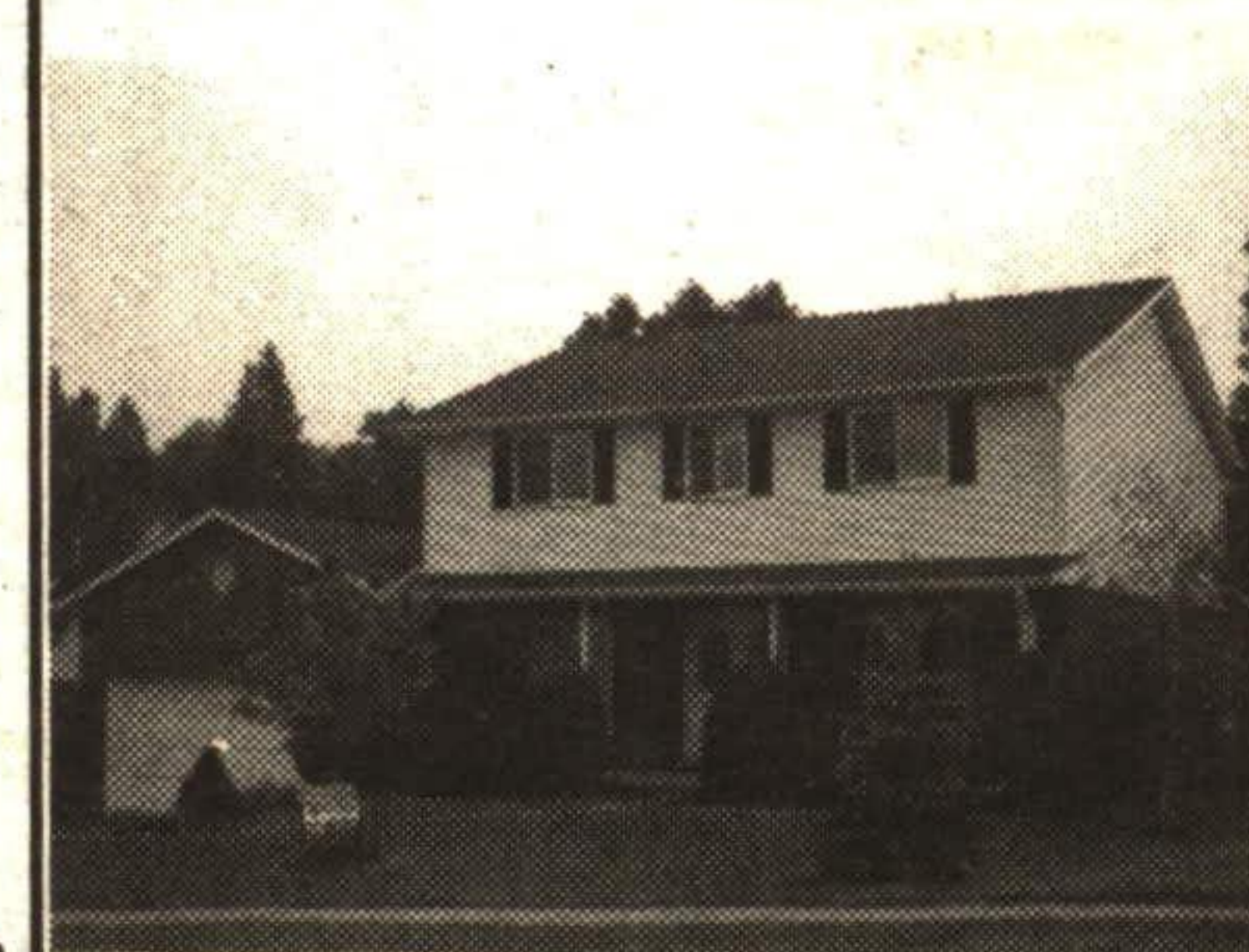
MARVYN MORGAN**



Associate Broker**

RE/MAX BLUE SPRINGS

Realty (Halton) Corp.
(519) 853-2086 (519) 856-4348



\$239,000

CLOSE TO CONSERVATION AREA
2100 sq. ft. 4 bedroom executive home with garage/workshop accommodating 4 cars. Skylights, huge kitchen, fireplace, recreation room, 3 washrooms. RMAC-071

A MUST SEE

SOLD - 12 BERRY STREET, ACTON - SOLD



ANGIE CORMPILAS, Assoc. Broker**
100% CLUB MEMBER
877-5211



Guaranteed
SALE
Program**

FREE LEGAL FEES FOR BUYERS

THE AGENT THAT
WON'T DISAPPEAR

AFTER THE SIGN IS UP!



RE/MAX SUBURBAN (91) INC.

360 Guelph St., Georgetown

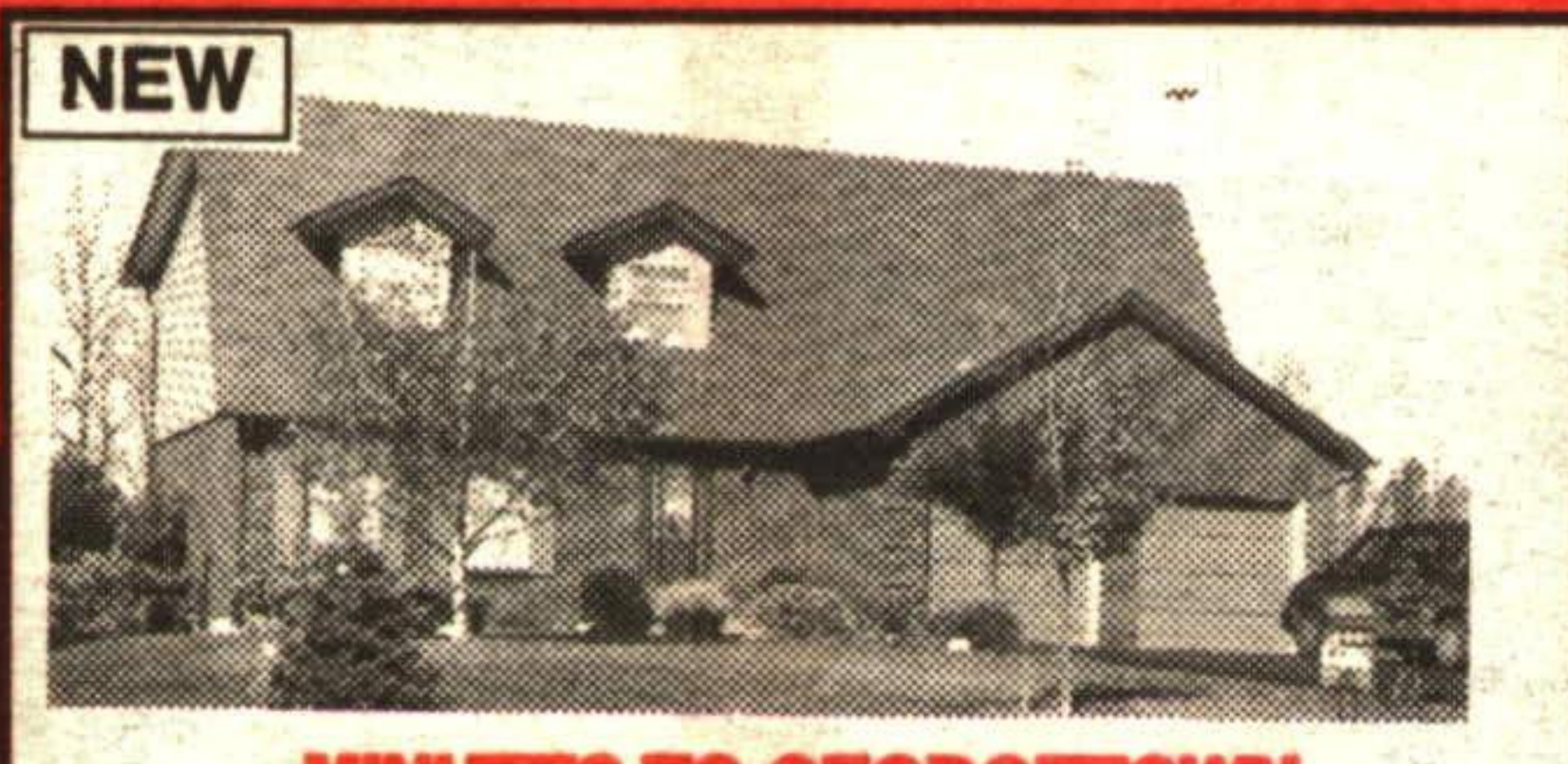
Allow a RE/MAX top producer to help you sell your home.

Your home advertised every week until sold.



HALF ACRE OF CHARM...

and character just outside of town. Main floor laundry and family room, 4 bedrooms. Immaculately kept and ready to be sold for only \$144,900. RM10-95



MINUTES TO GEORGETOWN

Country in estate subdivision, 1 acre; decorated for the nineties open and airy, totally gorgeous 4 bdrm home. Asking only \$234,900. A city house in the country. RM295-95



DID YOU WISH...

you had a private yard with an I/G pool last summer, a house with all the major work done, up to date, on a quiet court? Well, here's your chance, don't pass this by! Only \$202,900. RM301-95



DO YOU WANT A 3000 SQ. FT. HOME?

Elegant home in quiet neighbourhood. Interlock walks, central air, vac, upgraded ceramics, luxury ensuite bath, huge kitchen, main floor den and family room. Neutral decor and much more. Call Angie* for a look. RM307-95



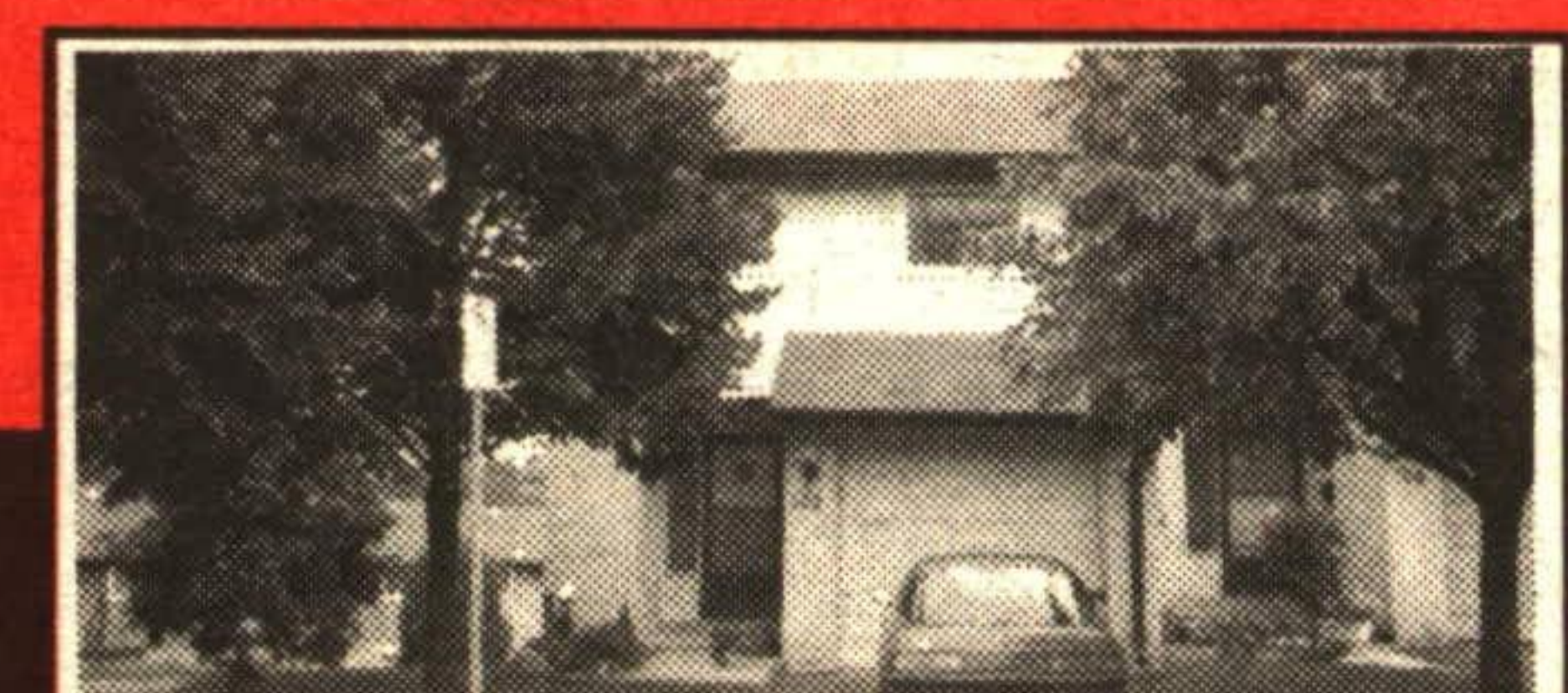
MATURE... GEORGETOWN SOUTH

Cape Cod style all brick 4 bedroom home on huge lot. Hardwood floors, ceramics, French doors and more. Shows like a dream at \$232,900. RM225-95



LOCATION! LOCATION!

Double door entry, landscaped, interlock walks and fenced across from Park. CAC, modern decor and mouldings. 4 bdrms. over 2000 sq. ft., gas FP in MF family room and bleached oak party sized kitchen with W/O to huge yard. A must see at \$214,900. RM244-95



RIVER RUN END UNIT

Offered at \$144,900. Lovely views, walkout basement, newer roof, windows, broadloom, central air. Home shows absolutely beautiful. RM230-95

All these listed properties had free market evaluations. You can have one too! I'm just a phone call away!
Intended to solicit properties for sale not already listed.

**Some restrictions do apply.