

OPEN HOUSE
SUNDAY, NOV 5
1:00 PM - 4:00 PM

8734 8th Line, Halton Hills (Georgetown)
 (3 Kms north of Steeles,
 first line east of Trafalgar Road)



- MINT CONDITION
- 2500 SQ FT CAPE COD PLUS
- 1500 SQ FT IN-LAW SUITE
- APPROX ONE ACRE
- CLOSE TO TOWN AND 401
- UNDER \$280,000



RE/MAX
 SUBURBAN (91) INC.
 360 GUELPH STREET
 GEORGETOWN

YOUR HOST:
GORD CUNNINGHAM
 SALES REPRESENTATIVE
 Bus: (905) 877-5211
 Res: (905) 873-7764



JEWEL OF A SETTING - \$229,900



Private setting in hamlet, 45 minutes from airport. Unique, custom home with 3 bedrooms + ensuite + office - lots of goodies. Don't miss it! **Betty McKend***

32-58

ROYAL LEPAGE

170 Guelph St., Georgetown

Royal LePage Real Estate Services Ltd., Broker

BETTY MCKEND

Sales Rep.
 877-0173



Ask for Jackie* or Jessie* Ask for Jackie* or Jessie*



Jackie Greenwood*
 Sales Representative

JOHNSON ASSOCIATES
HALTON LTD., REALTOR
Independently Owned & Operated

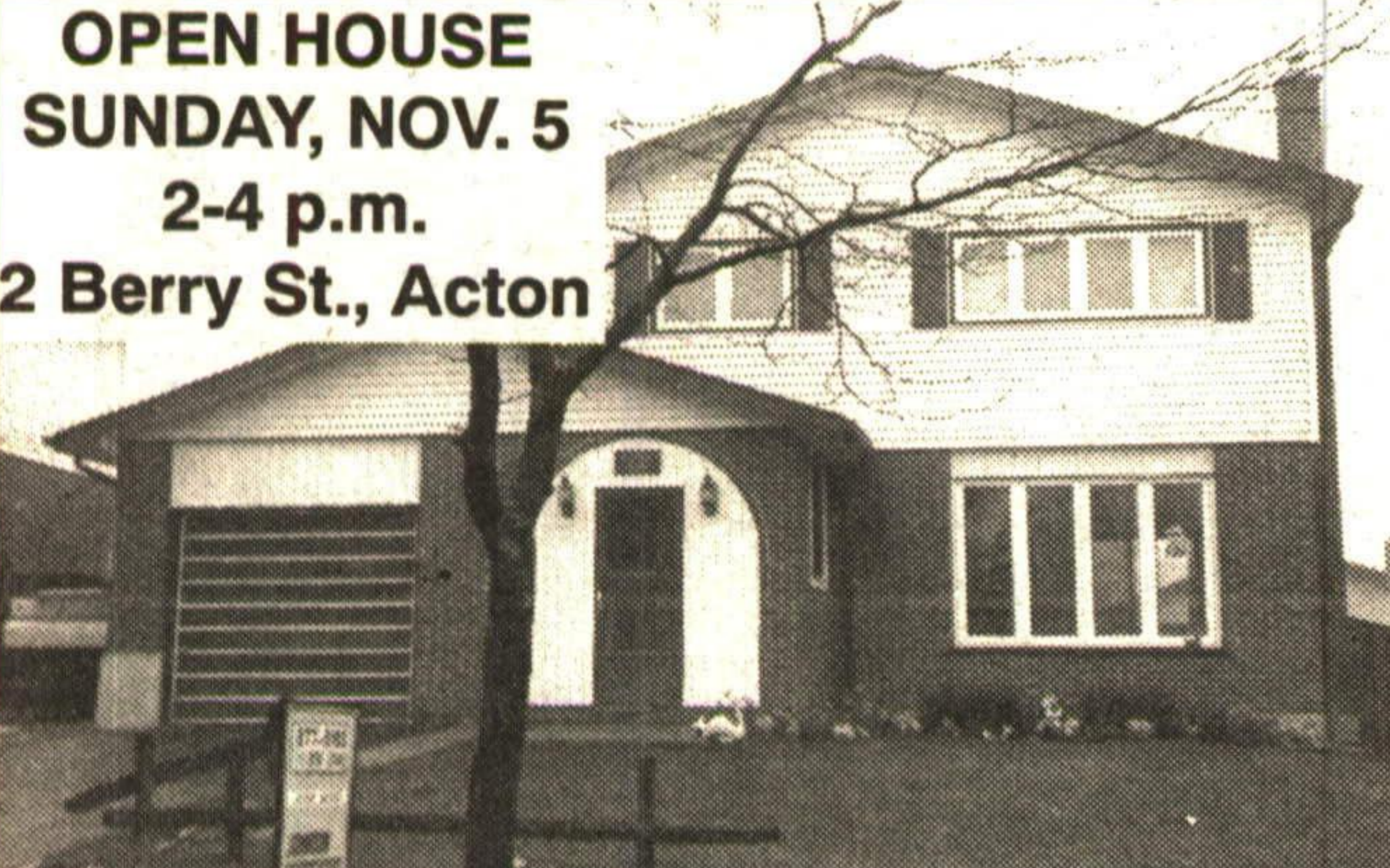
877-5165 or 874-3040



Jessie Jacobs*
 Sales Representative

"OUR FEATURES OF THE WEEK"

OPEN HOUSE
SUNDAY, NOV. 5
 2-4 p.m.
 2 Berry St., Acton



Super 4 bedroom, 2 storey, many upgrades, large, fully fenced lot, finished basement with fireplace, above ground pool with deck. Great buy at \$169,900.

95-2-611

TOWN.....AND.....COUNTRY



Beautiful 1 acre property just south of town with 3 bedroom sidesplit to house your family. Excellent location. Close to everything! Exceptional buy at \$214,900.

95-2-538

Ask for Jackie* or Jessie* Ask for Jackie* or Jessie*

I NEED YOUR LISTINGS!
ALL SIZES • ALL PRICES

SOLD



call
BRENDA PAYTON
 *Sales Representative



COMMITTED
TO ACHIEVING
RESULTS!!!!



9 YR. MEMBER
 Call for a Free Complete and Accurate Market Analysis!

SOLD
 THE SIGN OF PERFORMANCE

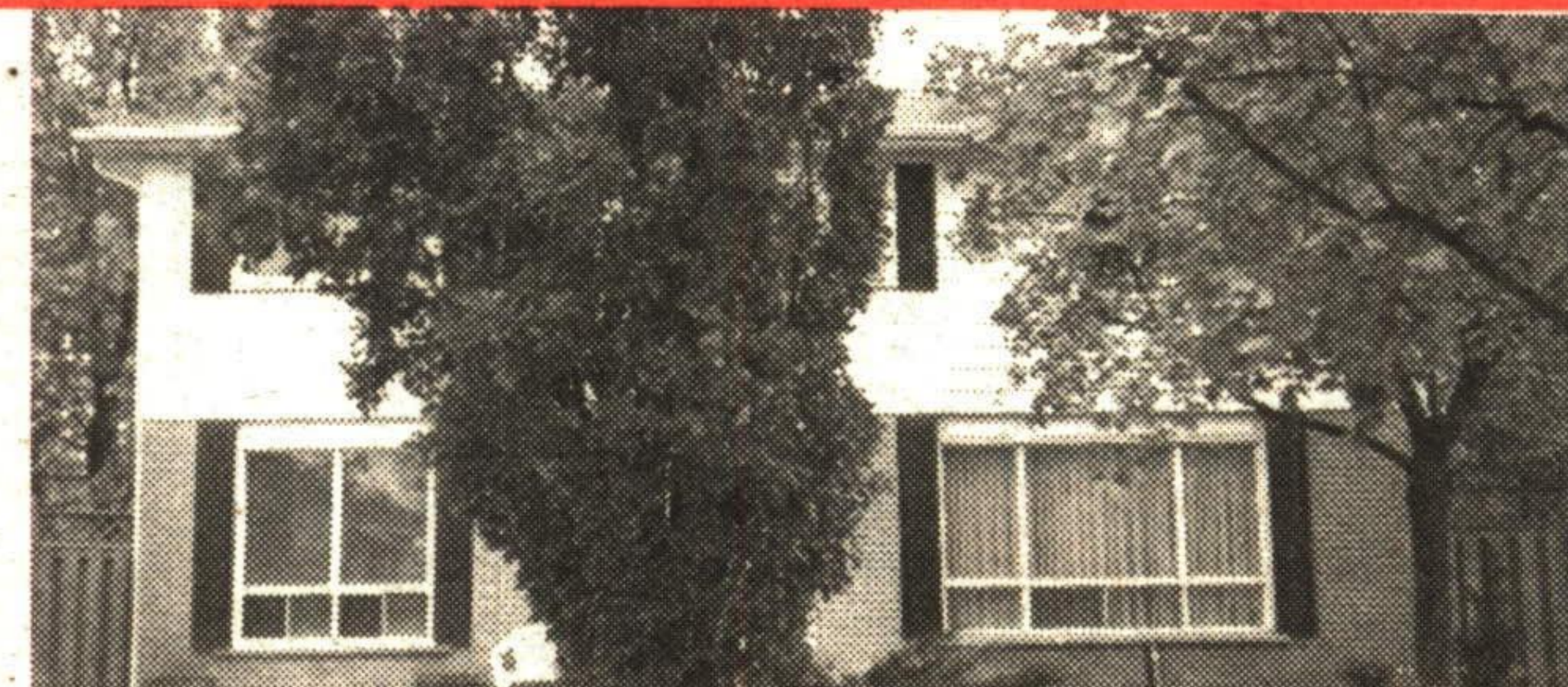
BRENDA PAYTON

JOHNSON ASSOCIATES
 HALTON LTD., REALTOR
Independently Owned & Operated

877-5165
874-3040
833-9714

PERFORMANCE COUNTS!

CALL ME NOW FOR A FREE EVALUATION OF YOUR HOME!!
I'M COMMITTED TO GETTING RESULTS!!



EDGE OF RAVINE!!

Priced to sell!! Pie-shaped lot on edge of Silvercreek ravine with southern exposure!! 4 bedroom, master with ensuite main floor family room!! Fireplace and more!! 95-2-603



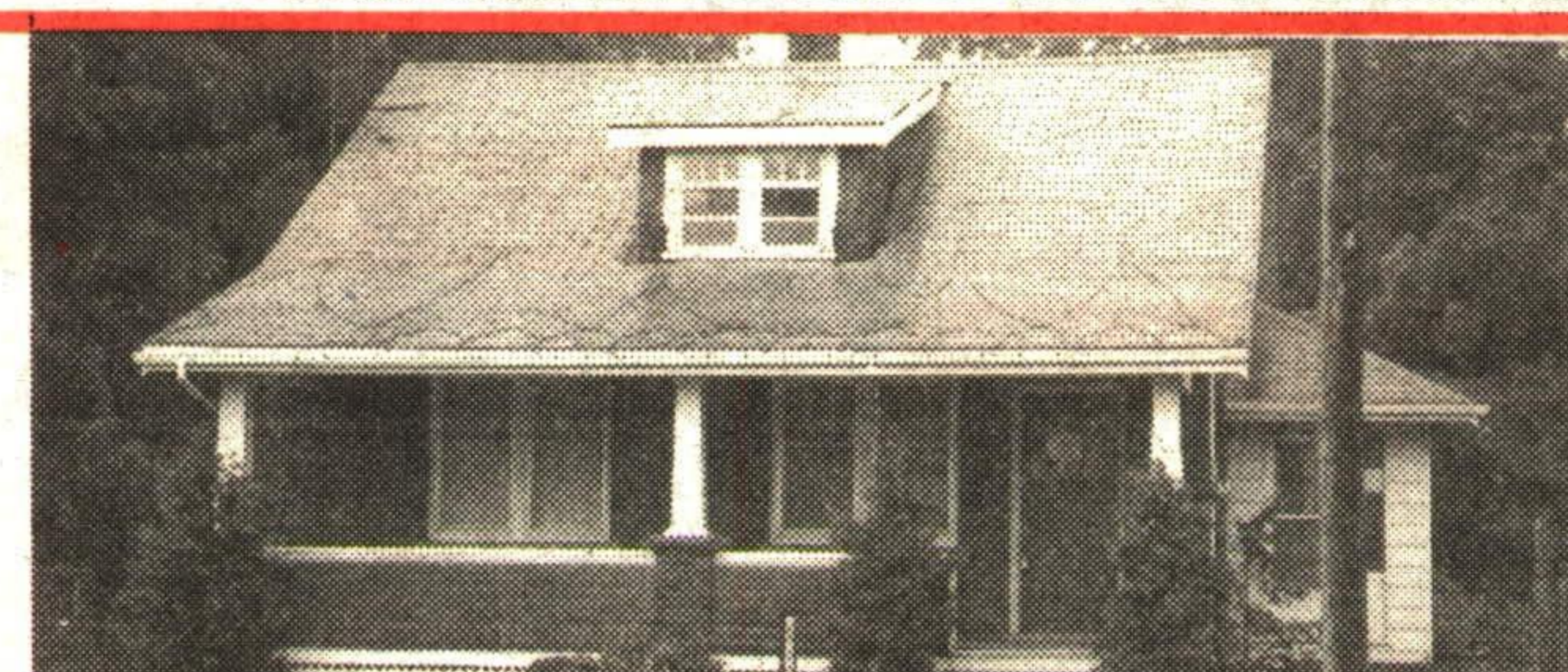
TWO FAMILY HOME!!
REDUCED!! \$143,500

3 bedrooms on main floor with spacious eat-in kitchen, living/dining combination! Gleaming hardwood flooring under plush updated broadloom!! Professionally finished basement with second kitchen, large bright living area, plus bedroom and bath!! 95-2-397



QUALITY CONSTRUCTION
REDUCED!! \$219,000

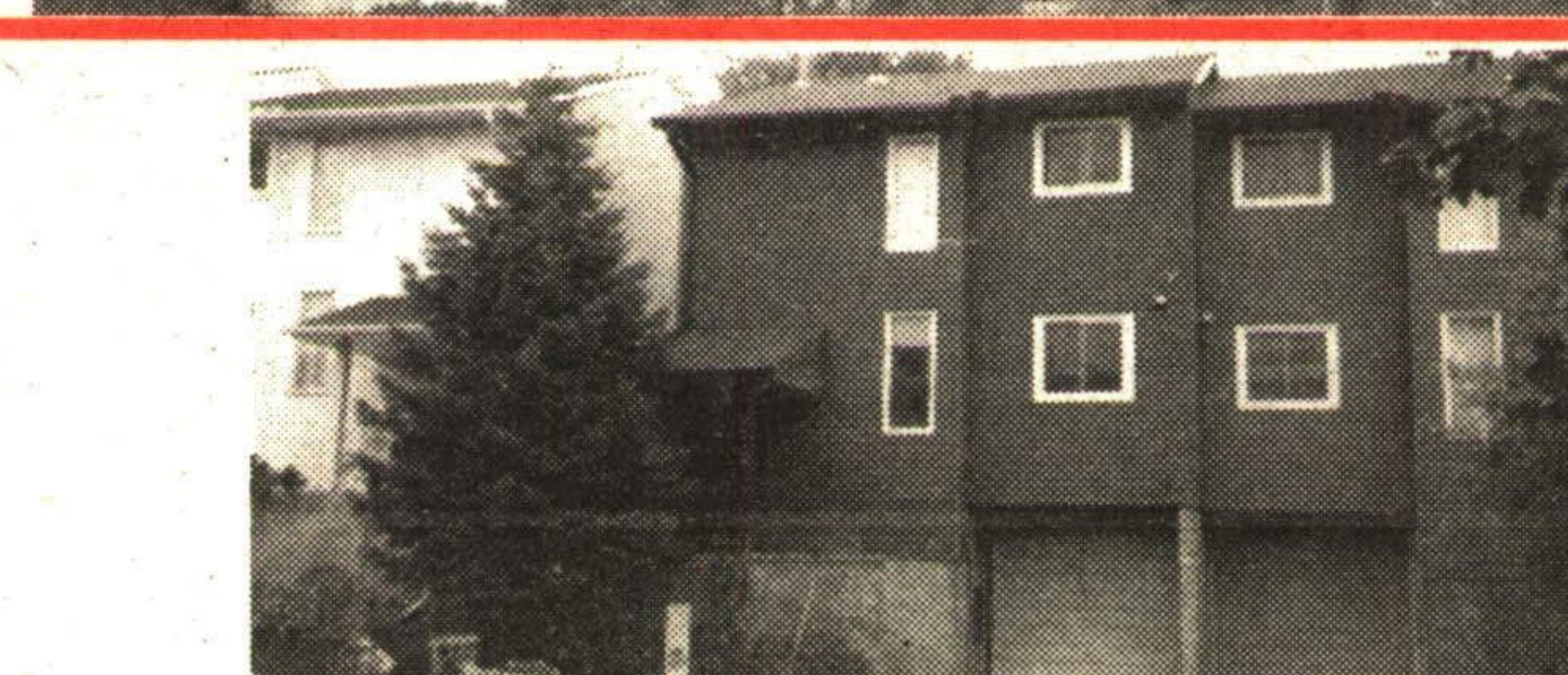
Large four bedroom family home in quiet residential area!! Greenhouse kitchen with walk-out to professionally landscaped lot!! Large bedrooms, master offers ensuite!! Main floor family room with fireplace!! Call Brenda* for more details!! 95-2-454



REDUCED
\$145,000

POWER OF SALE

Brick storey & one half with large brick shop on corner lot in hamlet of Ballinafad! Large treed lot! 95-2-533



SEEING IS BELIEVING!!

\$129,000 - NEW!!

Immaculate 3 bedroom with updated broadloom! Fantastic private, treed lot! Eat-in country style kitchen! 95-2-571



BUILDING LOT
\$79,000!!

Have it your way!! Build your dream home on this one acre lot with panoramic views in all directions!! Use your builder or ours!! Just outside the Village of Erin!! 95-2-VL