



KATHY ELLIS*



*Sales Rep.

JOHNSON ASSOCIATES HALTON LTD., REALTOR

Independently Owned & Operated

247 Guelph St., Georgetown

877-5165 Toronto 874-3040

The listing inventory is low! Thinking of Selling? Please give me a call!



A HOME WHERE YOU CAN HANG YOUR HEART!

Go ahead and fall in love. Cathedral ceilings, sunken living room, brick fireplace, hardwood floors throughout, new windows, huge workshop and stunning 1.83 acre lot. Don't hesitate at \$236,000, it won't last long. 40 min. to Toronto Airport. 95-2-534



AMAZING HORSE FARM 83 ACRES

Fabulous 28 stall barn - 5 paddocks - 5/8 mile track - 2 lunge rings - schooling area - springfed pond. 4 bedroom Victorian house is partially restored with beautiful woodwork & molding. The land is high & rolling with great views. \$435,000. Call to take a look. 95-2-527

**LOTS FOR SALE
LOTS TO SAVE**

ROLLING PRIVATE LOT 15 ACRES

With artesian well - Terra Cotta area - very close to Credit River. This land has many building sites and is rolling & pretty - could be a lovely building lot or investment potential. \$179,000 Possible V.T.B. potential.

VENDOR MOTIVATED

NEW LISTING



I DARE YOU TO FIND A PRETTIER LOT THAN THIS!

Rustic Country Home - beautifully decorated and maintained with 2 fireplaces, huge great room, 4 bedrooms, charming family room with fireplace, many walkouts including basement. The 2.8 acre lot is outstanding. A great package at \$234,900. Call for your showing today. 95-2-591

I Have Purchasers Looking for...

1. Large horse farm, minimum 25 acres, arena & 15+ stalls, a bonus - 30 minutes to Mississauga or Brampton
2. Small horse farm, close to Georgetown - under \$300,000.
3. 4 bdrm home on pretty wooded lot close to Georgetown or Brampton GO - \$300,000.
4. Country home. 60 min. to T.O. Older is better - \$300,000.
5. Log home - \$280,000-\$300,000 - country lot.



**"Goblin"
Good Deals
In
Real Estate**

FREE PRESS

INDEPENDENT

**I NEED YOUR LISTINGS!
ALL SIZES • ALL PRICES**

SOLD



BRENDA PAYTON

*Sales Representative



**COMMITTED
TO ACHIEVING
RESULTS!!!!**



9 YR. MEMBER

Call for a Free Complete and Accurate Market Analysis!

SOLD
THE SIGN OF PERFORMANCE

BRENDA PAYTON

JOHNSON ASSOCIATES HALTON LTD., REALTOR
Independently Owned & Operated

**877-5165
874-3040
833-9714**

PERFORMANCE COUNTS!

**CALL ME NOW FOR A FREE EVALUATION OF YOUR HOME!!
I'M COMMITTED TO GETTING RESULTS!!**



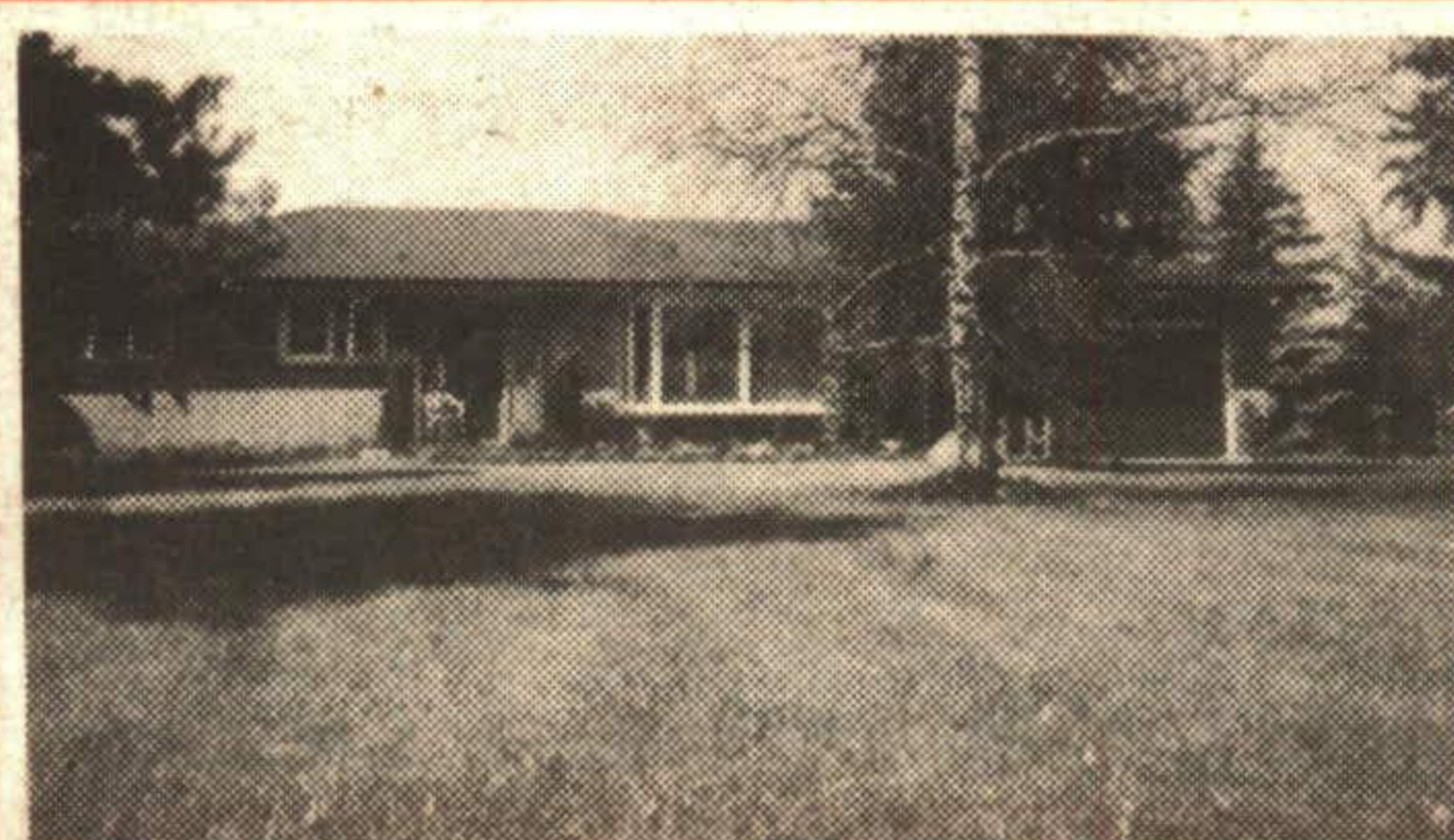
**TWO FAMILY HOME!!
REDUCED!! \$143,500**

3 bedrooms on main floor with spacious eat-in kitchen, living/dining combination! Gleaming hardwood flooring under plush updated broadloom!! Professionally finished basement with second kitchen, large bright living area, plus bedroom and bath!! 95-2-397



**QUALITY CONSTRUCTION
REDUCED!! \$219,000**

Large four bedroom family home in quiet residential area!! Greenhouse kitchen with walkout to professionally landscaped lot!! Large bedrooms, master offers ensuite!! Main floor family room with fireplace!! Call Brenda* for more details!! 95-2-454



THIS ONE HAS IT ALL!!

3 bedroom ranch bungalow on one half acre!! New oak kitchen!! Updated broadloom!! Updated efficiency furnace!! Central vac!! Double attached garage and professionally finished basement with super large family room, plus spare bedroom!! \$219,900!! 95-2-481



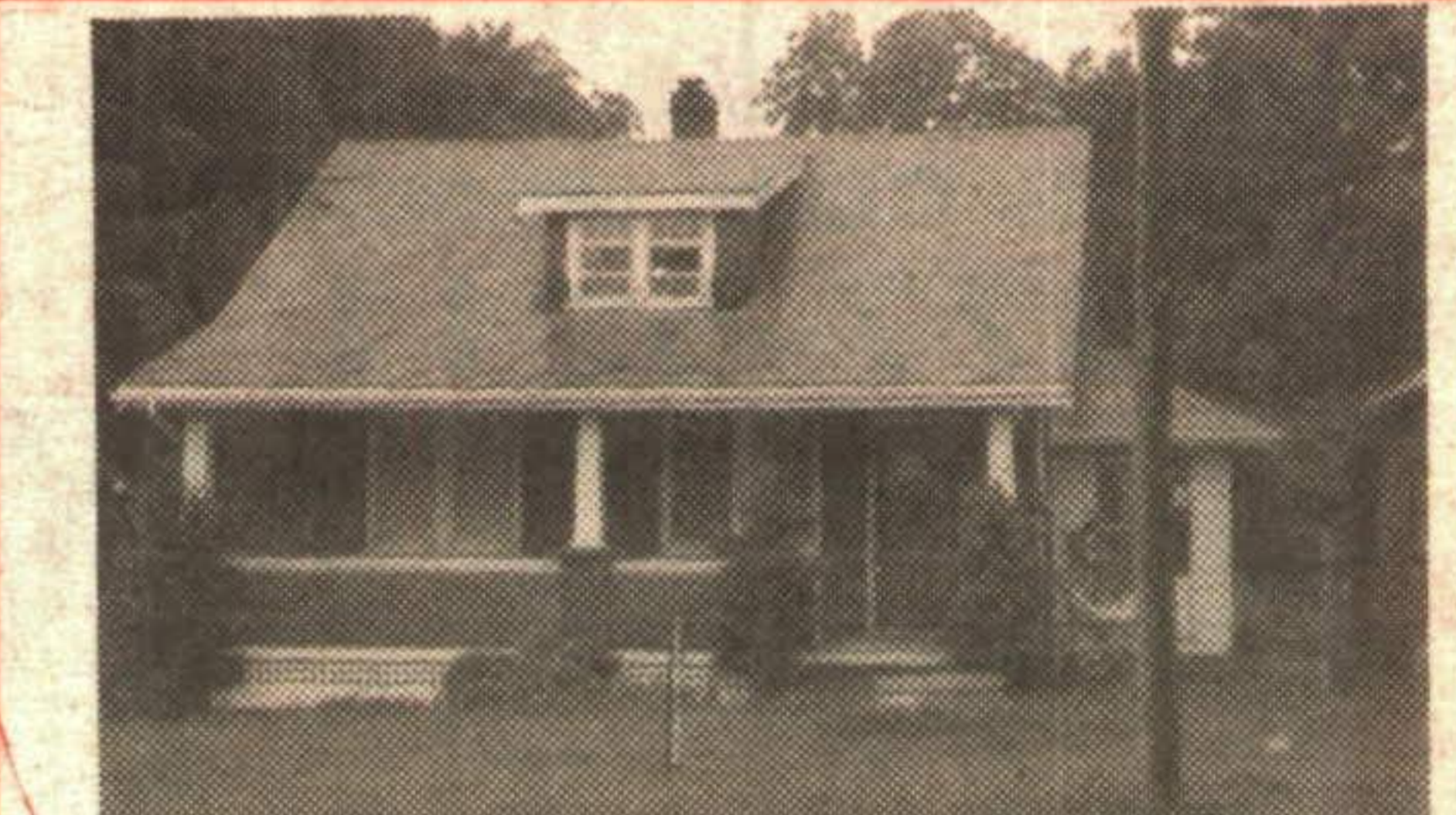
EDGE OF RAVINE!!

Priced to sell!! Pie-shaped lot on edge of Silvercreek ravine with southern exposure!! 4 bedroom, master with ensuite main floor family room!! Fireplace and more!! 95-2-603



ON 14 ACRES IN HALTON!!

Victorian reproduction - all today's modern features, main floor family room with reclaimed brick fireplace, wet bar and walkout!! Kitchen offers many built-in appliances and bay window eating area!! Separate and formal living/dining rooms!! Seven stall horse barn with water and hydro!! Priced to sell \$439,000!! 95-2-116



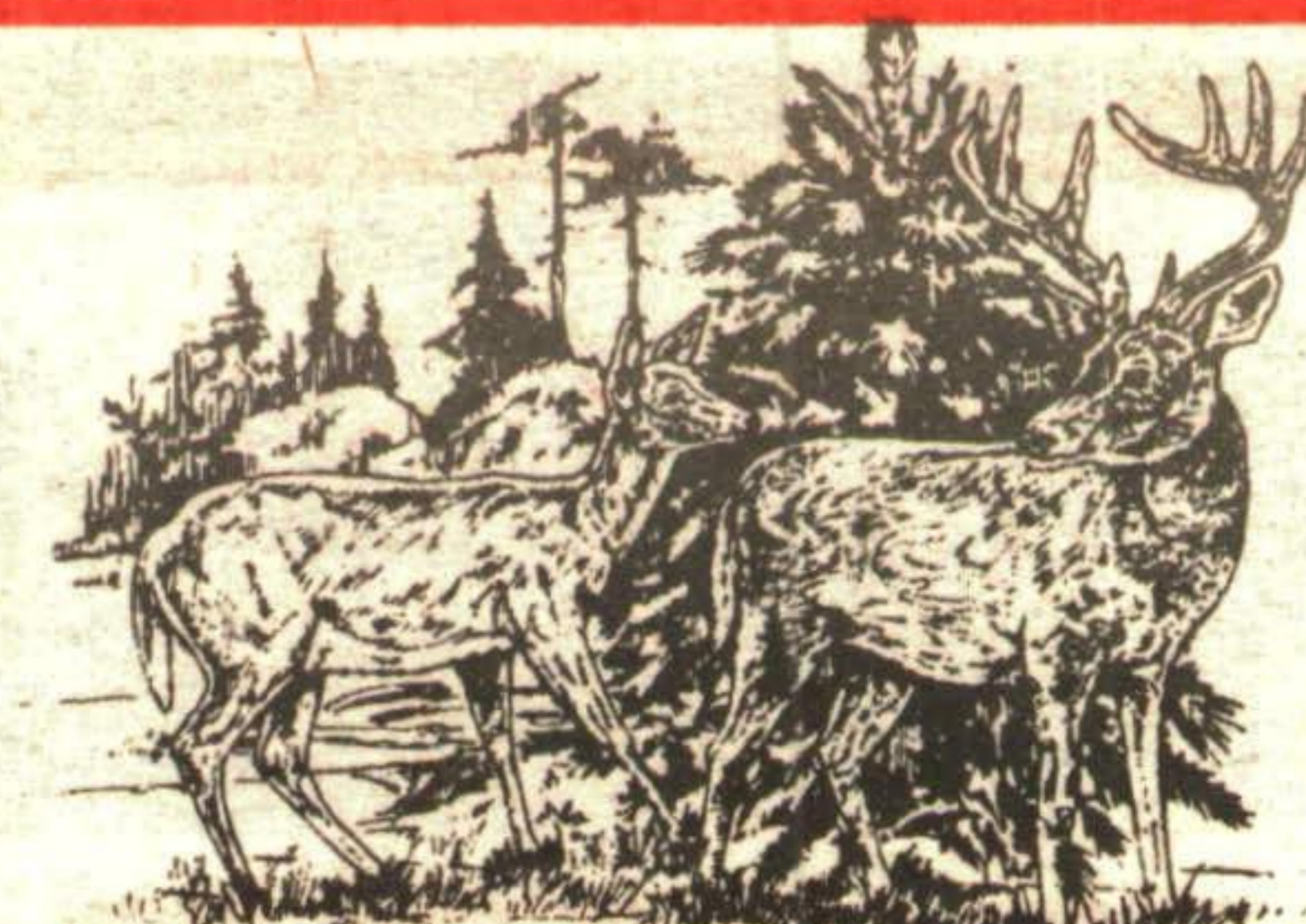
**REDUCED - \$145,000
POWER OF SALE**

Brick storey & one half with large brick shop on corner lot in hamlet of Ballinafad! Large treed lot! 95-2-533



**SEEING IS BELIEVING!!
\$129,000 - NEW!!**

Immaculate 3 bedroom with updated broadloom! Fantastic private, treed lot! Eat-in country style kitchen! 95-2-571



BUILDING LOT - \$79,000!!

Have it your way!! Build your dream home on this one acre lot with panoramic views in all directions!! Use your builder or ours!! Just outside the Village of Erin!! 95-2-VL