

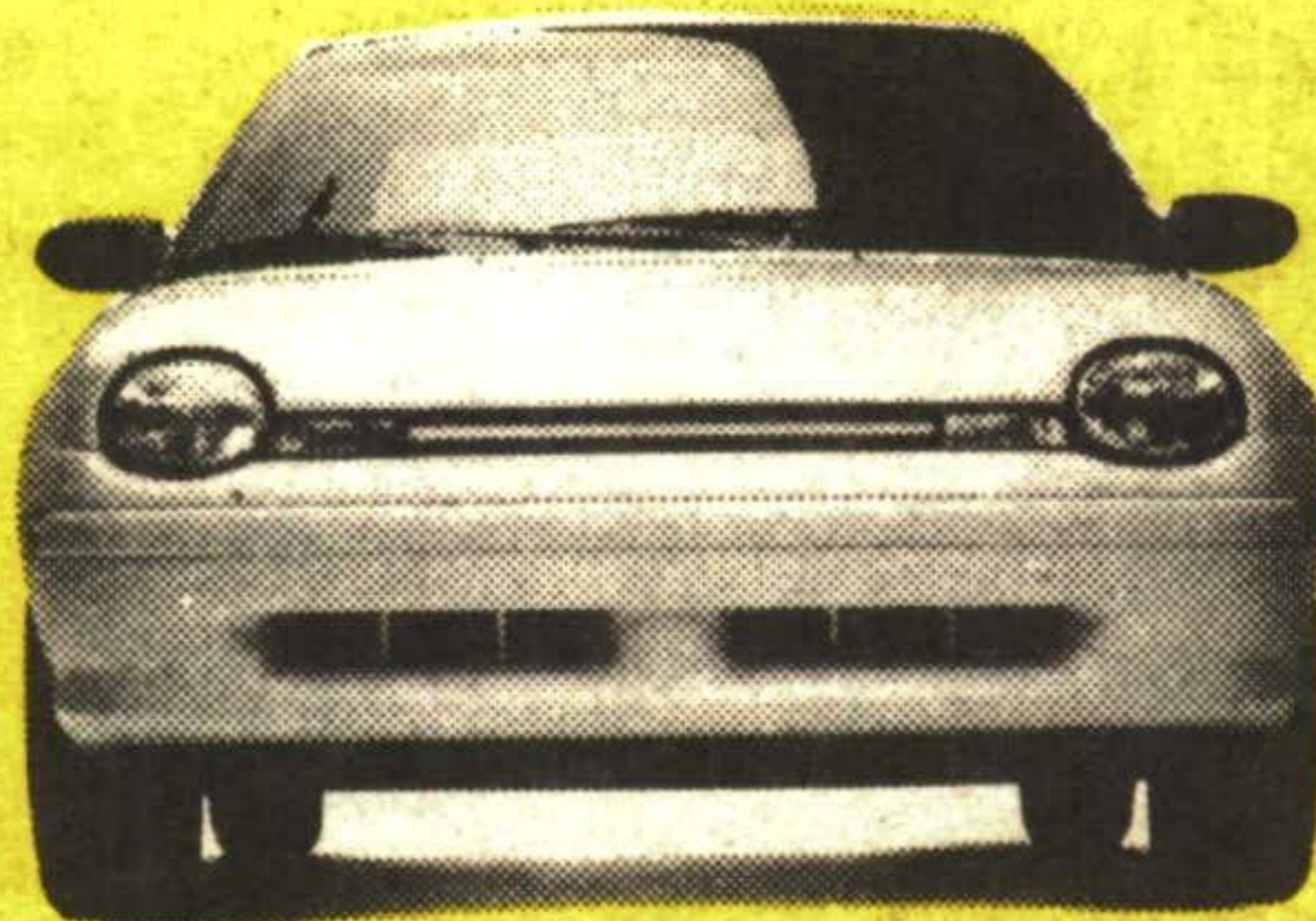
IT'S YOUR CHRYSLER DEALER'S

◆ 1995 ◆ AWARD WINNERS CLEAR-OUT EVENT



1995 Dodge Ram Regular Cab
Tough to beat. Only one truck was tough enough to win back-to-back 4-Wheel & Off-road Magazine's "4x4 of the year" awards: Dodge Ram.

\$2,000 Factory Rebate†.



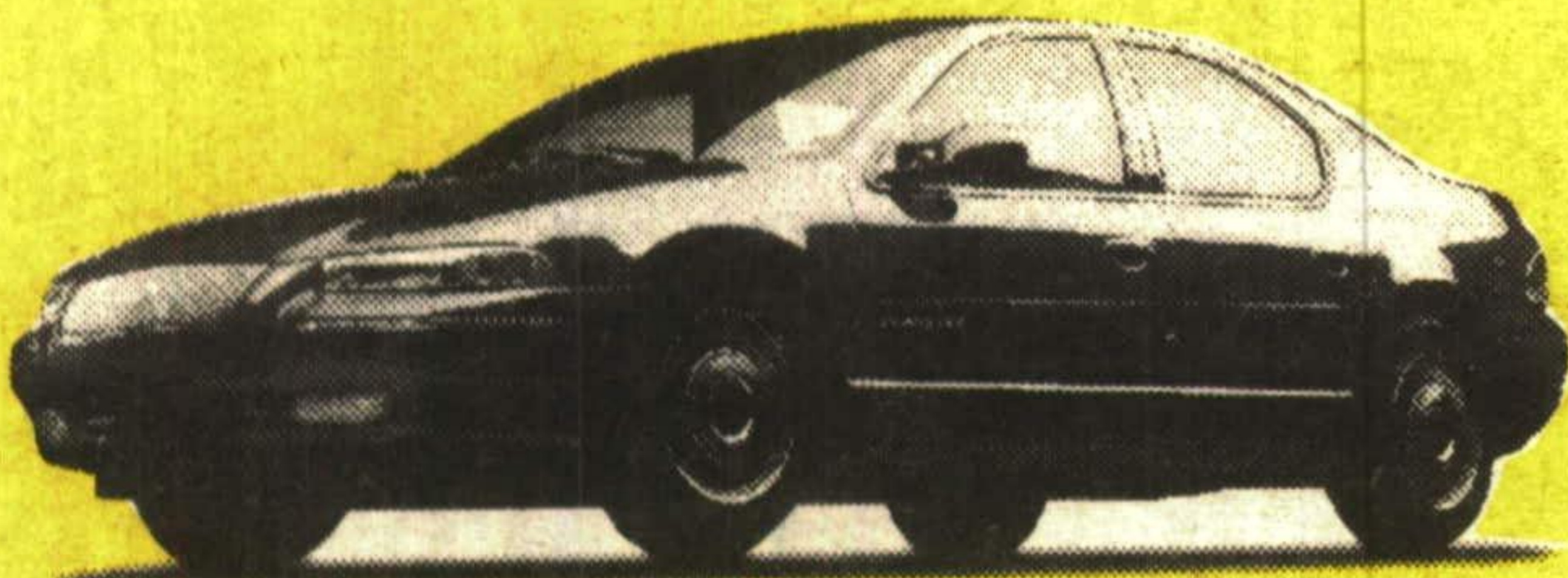
1995 Dodge/Plymouth Neon 22D Package: Automobile Journalists Association of Canada's "1995 Car of the Year" proves that you can have it all in a sub-compact car.

\$13,488* or **\$239****
Including \$900 factory rebate
Per month for 30 months



1995 Chrysler Intrepid 22C Package: Carguide Magazine's "Best Buy of the Year" in the family sedan category packs a lot of punch and a lot of value in a stunning design.

\$19,388*
Including \$1,500 factory rebate



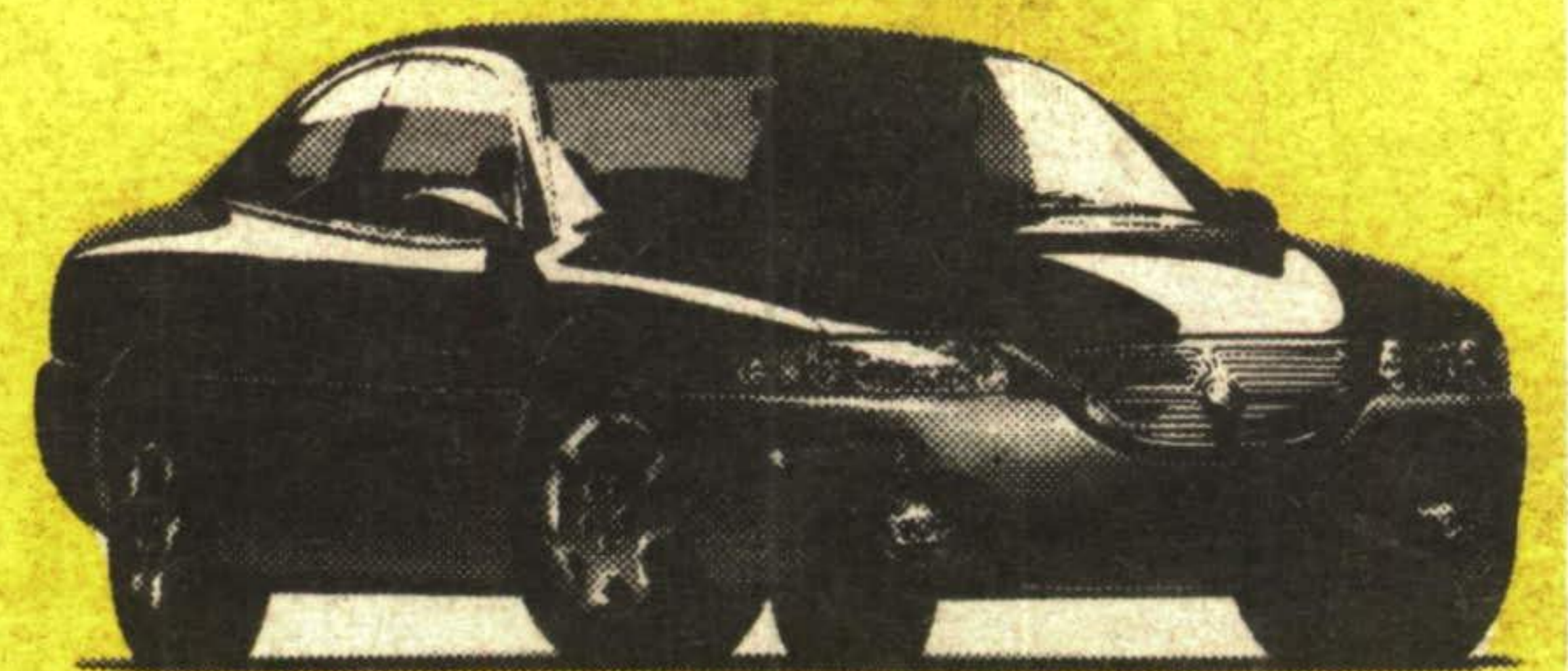
1995 Chrysler Cirrus 26j Package: A trunk full of awards in its first model year proves that it is possible to build a luxury car that feels as easy on the road as it is on your budget.

\$19,988* or **\$299****
Including \$1,000 factory rebate
Per month for 30 months



1995 Dodge Stratus
The recipient of Popular Mechanic's "Design and Engineering Award" shows how you don't have to sacrifice your love of the road for the need of four doors.

\$1,000 Factory Rebate†.

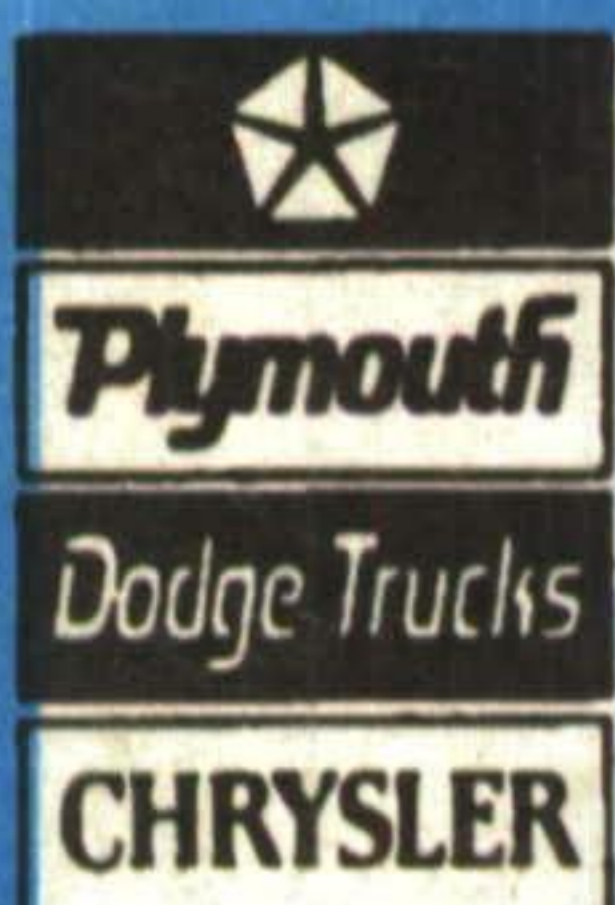


1995 Chrysler Sebring LXi 24j Package: From its beautifully mannered suspension and handling to its luxurious leather seats, the highly acclaimed Sebring makes every moment count.

\$22,888* or **\$388****
Including \$750 factory rebate
Per month for 30 months



* Vehicles may not be exactly as shown. Price includes factory rebate of: \$900 Neon, \$1,500 Intrepid, \$750 Sebring and \$1,000 Cirrus assigned by Chrysler Canada LTD. and available on retail purchases of 1995 models only. Rebates may not be combined with other offers. Rebate includes G.S.T. Price excludes freight: \$600 Neon, \$760 Intrepid, \$695 Sebring and \$695 Cirrus, license, insurance, registration and taxes. Limited time offer. Dealer may sell for less. Dealer trade may be necessary. See Dealer for details. ** Monthly rate set out is for a 30 month term, based on vehicles as described. A minimum down payment or equivalent trade required as follows: \$1,646 Neon, \$3,089 Cirrus and \$3,887 Sebring. No down payment plan available. See Dealer for details. Security deposit required as follows: \$300 Neon, \$350 Cirrus and \$450 Sebring. Leases are for personal use only and subject to approval by Chrysler Credit Canada Ltd.. Commercial vehicles are excluded. Total lease obligations, excluding taxes, are as follows: \$9,116 Neon, \$12,049 Cirrus and \$15,977 Sebring. Free kilometres are limited to 62,500. Charge of 5.0¢/km for excess kilometres. Offer may not be combined with other offers from Chrysler Canada. This is a closed end lease with no buy-back requirement. Excludes freight license, insurance, registration and taxes. Delivery must be taken from Dealer inventory. Dealer may lease for less. Limited time offer. See Dealer for details. † Rebate available on retail purchase of 1995 models only and may not be combined with other offers. (Dodge Ram regular cab only, excluding diesel) Rebate assigned to dealer from Chrysler Canada LTD.. Rebate includes G.S.T. Limited time offer. See Dealer for details.



GEORGETOWN CHRYSLER JEEP (1993) LTD.

336 GUELPH ST., GEORGETOWN

877-0149 877-5108 TOR. 874-4277

