



Coldwell Banker First Halton Realty
106 Guelph St., Georgetown Corner of Maple & Guelph

Office (905) 877-9500 *Sales Representative
Barbara Glenn* **Beatrice Keck***

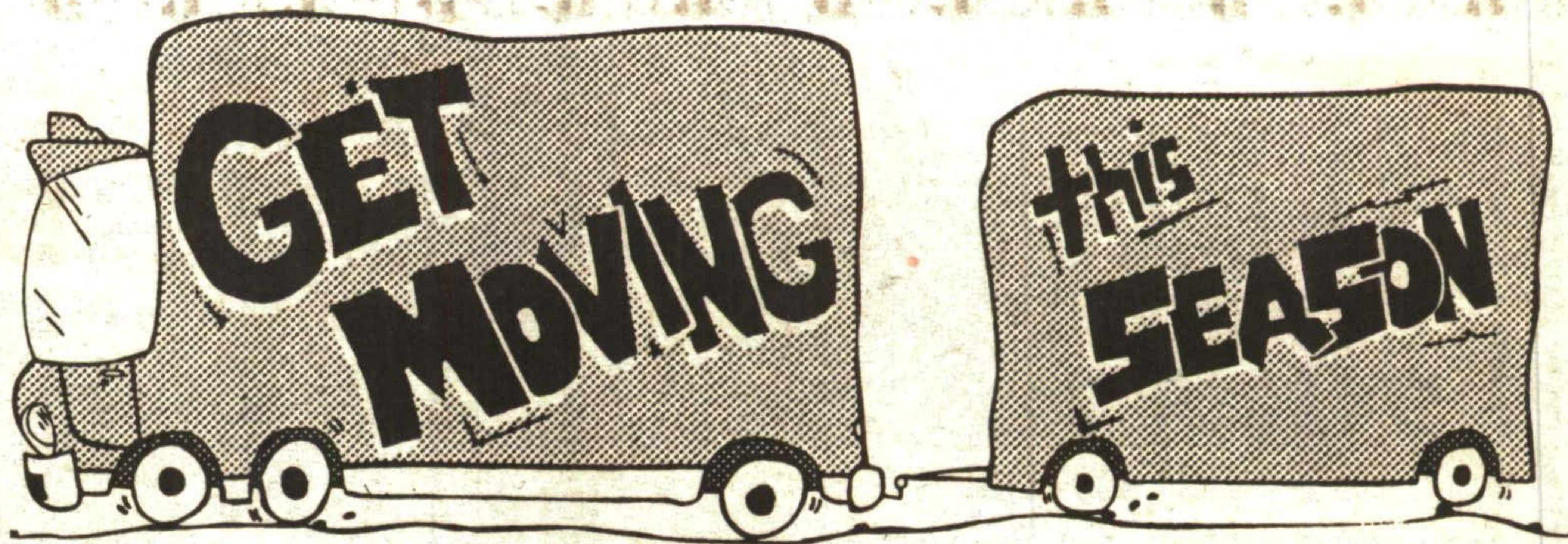


VENDOR ANXIOUS REDUCED TO \$159,900



CAREFREE LIVING CAN BE YOURS
ROYAL ASCOT - GEORGETOWN
Elegant corner unit - "Ashford" model approx. 1,369 sq. ft. 2 spacious bedrooms complete with private ensuite/whirlpool & walk-in closet with master. Beautiful view & gorgeous sunsets. Upgraded thru-out - oak kitchen with 5 appliances included, ceramic flooring, private balcony. Make use of the party room, exercise & billiard room, sauna, whirlpool, jacuzzi.

Beatrice Keck* & Barb Glenn*
Please call (905) 877-9500.



Happy ^{October 9,} 1995
Thanksgiving

COUNTRY CHARM



Beautiful Terra Cotta (Winston Churchill Blvd.) Classic Victorian reproduction, stone, pine board and batten, nestled on 1 acre lot. New well, septic, foundation, siding and shingles. Unbelievable price. Don't miss this opportunity to view, call



Select Real Estate Services Ltd.
MEMBER BROKER

Dave Scanlan
Broker

(905) 791-4111



DOUG MEAL* RE/MAX DOUG MEAL*

RE/MAX SUBURBAN (91) INC.

\$154,900. - BIGGER LOT
3 bedroom. Finished basement. Extra bathroom. Call **DOUG MEAL*** for more details. RM258-95

LOCATION LOCATION LOCATION
Commercial building older downtown business area. Call **DOUG MEAL*** for details. RM163-95

RE/MAX SUBURBAN (91) INC.

Doug Meal*, Sales Rep.
Re/max Suburban (91) Inc.
877-5211 Tor (905) 874-3051
Erin (519) 833-7117

DOUG MEAL* RE/MAX DOUG MEAL*

My Shopping List For Oct. 1995

I'm working with customers who are looking for these special properties.

1. Country home with in-law or in-law potential, situated on one acre or more. Priced up to \$250,000.
2. "Old Is IN" Turn of the Century homes in all price ranges.
3. 2500 sq. ft. executive bungalow on secluded 10 acres or more, with pond. Completed lower level with walkout is essential. Range up to \$600,000.
4. Retirement bungalow in older area of Georgetown. Approx. 1000 sq. ft. and must be in good condition. Range to \$170,000.
5. Lots of acreage (100 - 200 acres) for businessmen's retreat - secluded from road yet with some open fields - up to \$800,000. South of Highway 24.
6. 1/2 acre to 1 acre in country within 20 minutes of Georgetown. Nicely upgraded home - range up to \$225,000.
7. Bungalows in Georgetown in price of \$170,000. - \$190,000.
8. Home in Glen Williams for young executive couple. About \$200,000.

If you own one of the above and are considering a move - please give me a call.

WATCH FOR MY SHOPPING LIST ON THE FIRST WEEKEND OF EACH MONTH

JOHNSON ASSOCIATES HALTON LTD., REALTOR
Independently Owned & Operated

Bus. (905) 877-5165
Erin (905) 833-9714
Tor. (905) 874-3040
247 Guelph Street



MARILYN WORRALL
Sales Rep.

Not intended to solicit properties currently listed for sale.

Find a new place to hang your hat in the Real Estate Digest



ESCAPE TO THE COUNTRY

And enjoy this custom built reverse bungalow on just under 5 acres, close to town and schools. Many upgrades like whirlpool tub, ceramic tiles, Hanover oak kitchen cupboards, formal living/dining room, good sized bedrooms with tons of closet space. Offered for the first time for only \$234,900. 20-32



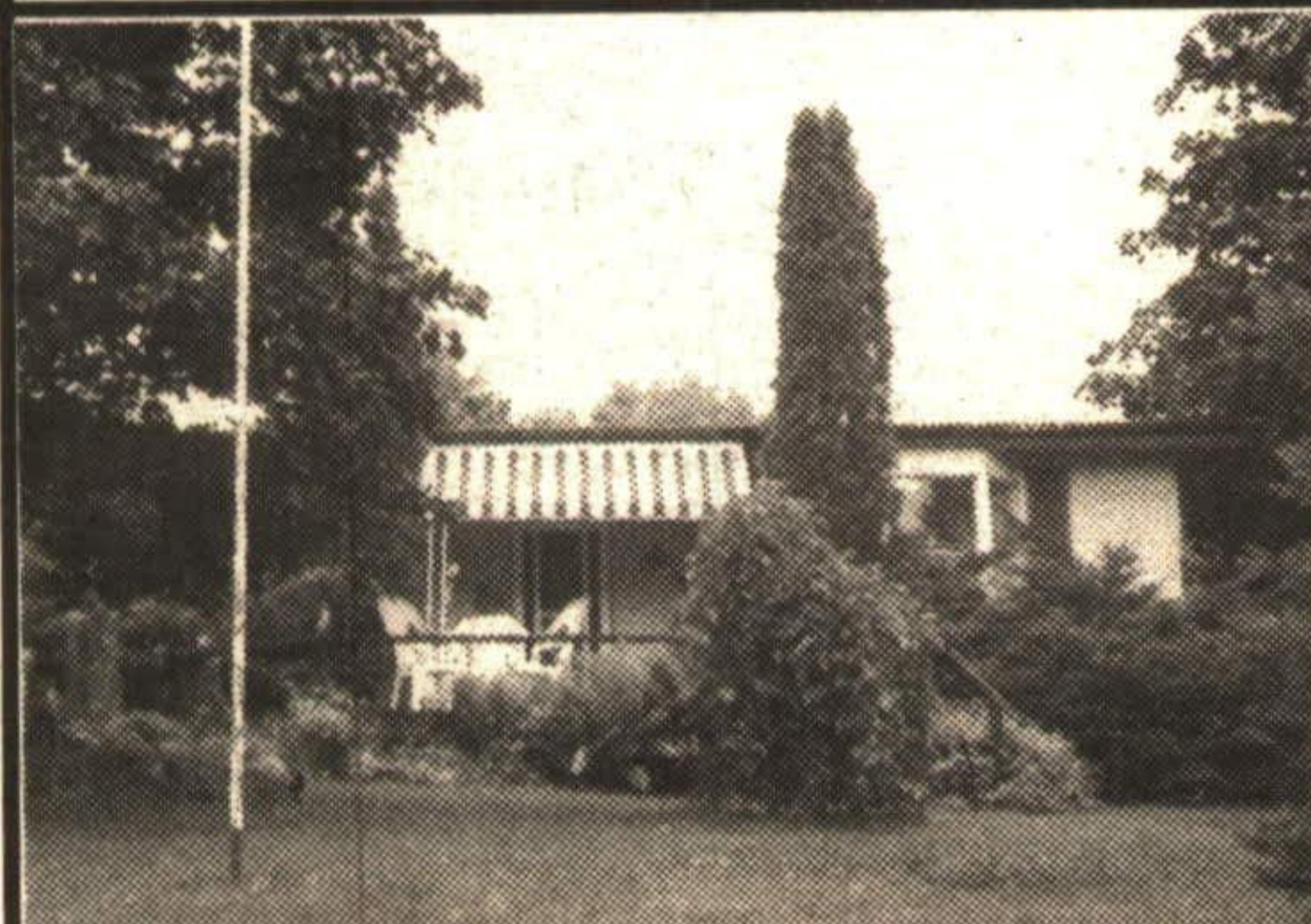
FIRST TIME BUYERS TAKE NOTE

This is a well maintained backsplit with a single garage, on a desirable street, close to school and shopping. All the windows and the shingles have been replaced. Beautiful refinished hardwood floors on the main levels, full finished rec room, central air conditioning and eat-in kitchen are just a few of the features. Offered for only \$177,900. 20-31



AMONG THE PINES IN ERIN

Take this opportunity to purchase this custom built approx. 3850 sq. ft. home on an acre estate lot. Tens of thousands spent on upgrades at the time of construction. This is truly a magnificent house that needs to be seen to be appreciated. Offered for only \$399,900. 20-24



ENJOY THE FALL VIEWS FROM YOUR FRONT STEP

Custom bungalow on one of Georgetown's finest streets. Beamed cathedral ceilings in the kitchen and living room. Walkout from the living room and master bedroom to deck. Walkout basement with rec room, fireplace and additional bedroom. Check it out for only \$234,900. 20-25

Susan Whitteker* *Sales Rep.

ROYAL LEPAGE 877-0173

ROYAL LEPAGE REAL ESTATE SERVICES LTD., BROKER

