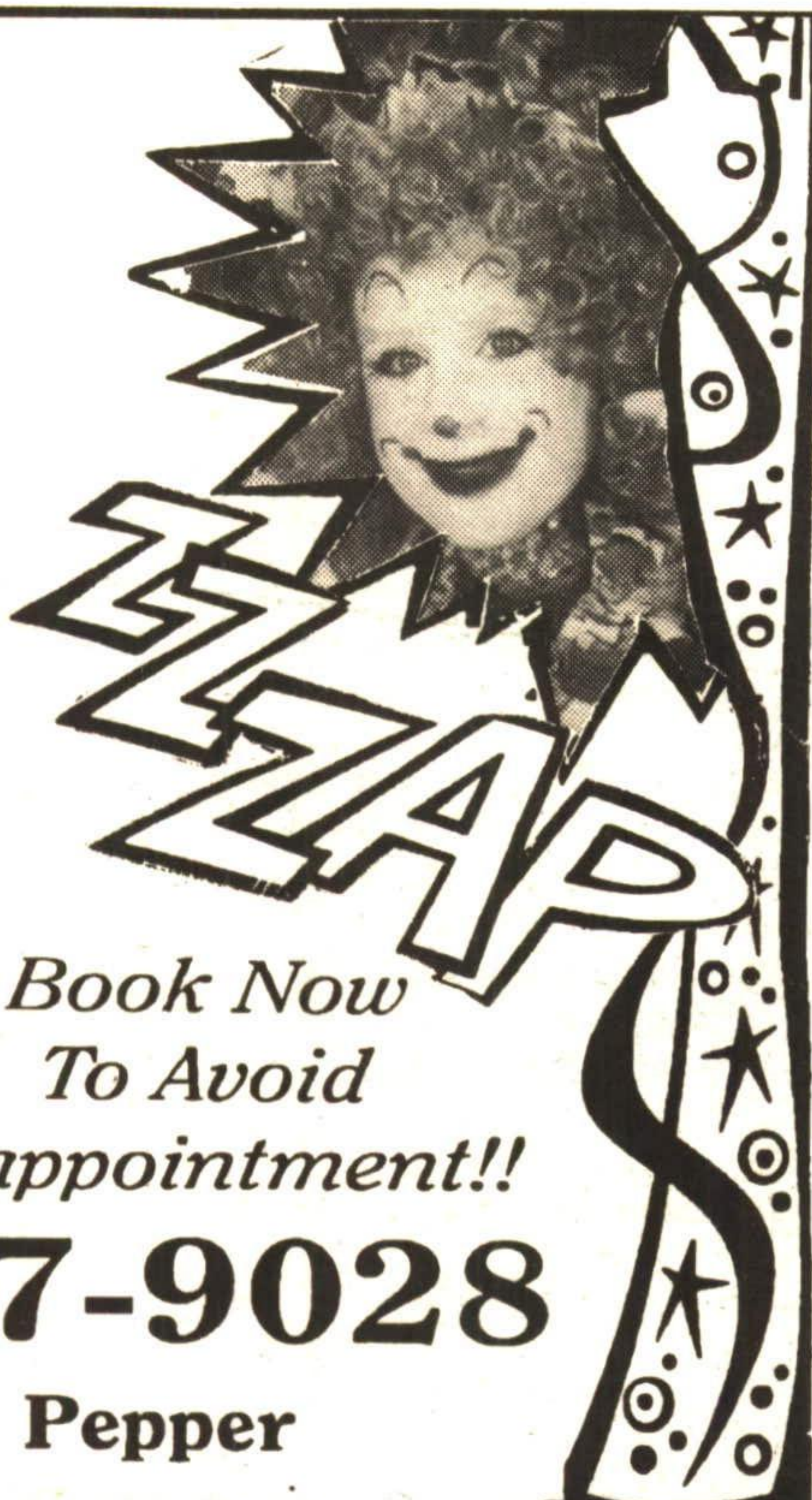


Need a Clown?
DEE-DEE
the CLOWN
WILL MAKE IT
AN EVENT
THEY WON'T FORGET!

- * Animal Balloons
- * Face Painting
- * Games
- * Magic
- * Fun, Fun, Fun
- * Children's Parties
- * Store Openings
- * Corporate Rates



*Book Now
 To Avoid
 Disappointment!!*

CALL (905) 877-9028
ANYTIME Diane Pepper

DUCT CLEANING

By  **Consumers Gas**

It's a fact, having your ducts professionally cleaned improves your home's air quality, removes accumulated dust and maximizes your heating and cooling system's performance. The easy way to professional duct cleaning begins with a



call to your authorized Consumers Gas Duct Cleaning contractor, Ontario Duct Cleaning (O.D.C.).

**EASY
 PAYMENT
 OFFER**

**PUT IT ON
 YOUR GAS BILL,
 AND
 TAKE 3 MONTHS TO PAY
 INTEREST
 FREE**
(Upon credit approval)

For A **FREE**
 no obligation estimate

**CALL
 (416) 798-7200**

You can rely on Consumers Gas And, O.D.C. to provide you with an unbeatable combination of technical expertise and professional service. As always, all work is fully guaranteed by Consumers Gas and O.D.C. If you're not fully satisfied you can receive a full refund.



"The Professionals"

Reduce, reuse, recycle:

How can you help?

By **LISA SEILER**

Special to The Independent/Free Press

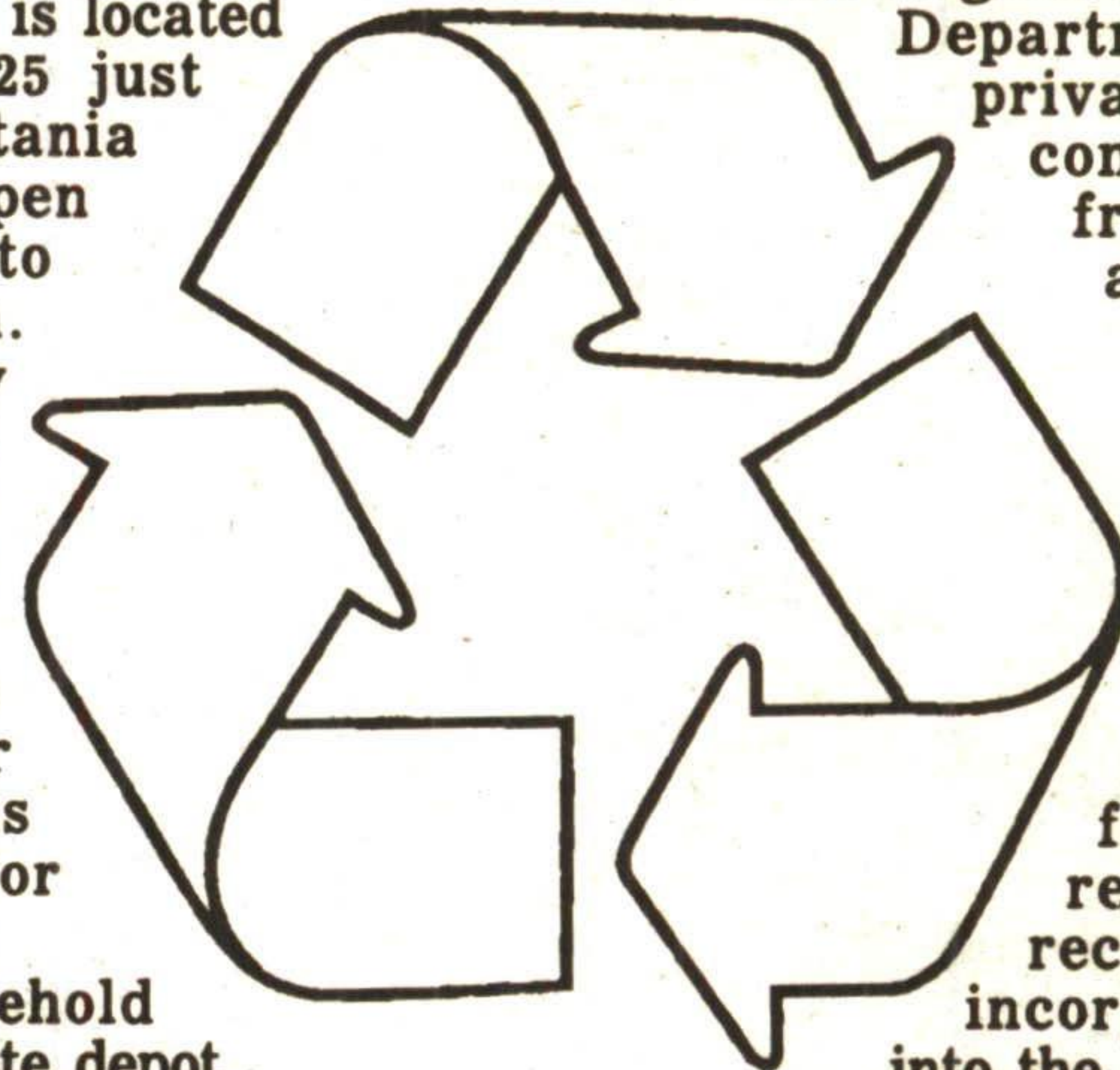
This is the first in a series of articles. The theme is reducing, reusing, and recycling: How we can do more.

Did you know that the Region of Halton operates a central facility for recycling and waste disposal, known as the Halton Waste Management Site, that is open to the public?

The facility is located on Highway 25 just south of Britania Road. It is open from 8 a.m. to 4:30 p.m. Monday through Saturday (excluding holidays).

There are currently four parts of this facility for residential use:

1. Household Hazardous Waste depot (for paint, poisons, fuel, etc.) This depot is free of charge.
2. Amity Reuse Centre (for old clothing, small appliances, etc.) This depot is free of charge. It is a drop-off station.
3. Recycling containers (for newspaper, cans, bottles, etc.) If you bring only recyclables to the facility, there is no charge.
4. landfill and container station (for everything else).



There is a charge of \$5 per load for loads under 150 kg. The charge for any excess over 150 kg is \$.05 per kg.

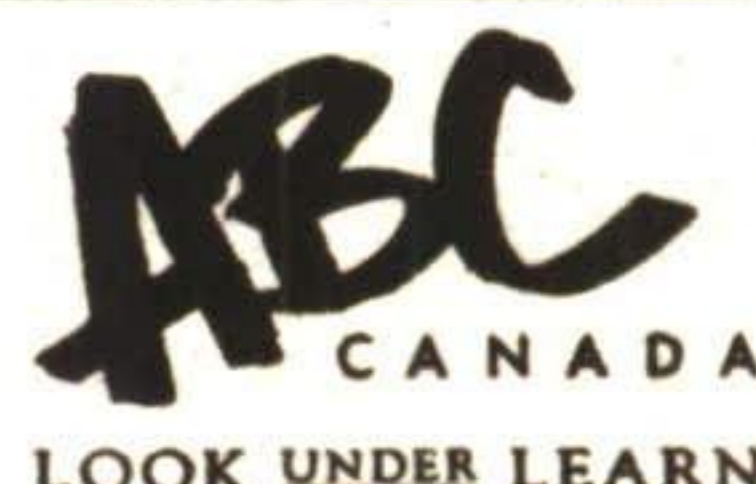
The goal of this series of articles is to lessen the amount of material that goes to Halton's landfill by giving you ideas on how to reduce, reuse and recycle. Each article will address a different aspect of waste reduction. It will include information gathered from the Region's Public Works Department, from private recycling companies and from retailers and manufacturers in the region.

Would you like to see an interactive column? If so, write to me with ideas for reducing, reusing or recycling! I will incorporate them into the column as the topic arises. If you have questions you would like answered, please write me care of this newspaper.

Next topic: paint.
Lisa Seiler is a volunteer citizen member of the Region of Halton's Joint Municipal-Regional Waste Management Committee. This series is being prepared with the help of Halton's Department of Public Works.

Helping people learn to learn.

If you or someone you know would like to improve reading, writing or math, look under LEARN in the Yellow Pages™ directories.



PRESENTING **THE COLOURS OF FALL** AT **CURTAIN CALL'S ANNUAL Fashion Show**

7 PM
OCTOBER 2
TERRA COTTA INN RESTAURANT
1-800-520-0920

FEATURING

- ▼ Studio J (Mr. Jax)
- ▼ Angela Buccaro
- ▼ Bridal by Jessica McClintock
- ▼ Lysle Spénard
- ▼ Howard Wolf
- ▼ Stellman
- ▼ Doraz
- ▼ Looks

THE ONLY ONE STOP SHOPPING BOUTIQUE
 from casual to bridal
CURTAIN CALL (519) 927-2727
 17277 Mississauga Road, Belfountain

P.S. WE PAY GST & PST