



MARG SUITOR*
Sales Representative
1-800-267-7430

ARTHUR F. JOHNSON & ASSOCIATES LTD., REALTOR

140 MAIN ST., ERIN

OPEN HOUSE WEEKEND

OPEN HOUSE
SAT. SEPT 2 1:00 p.m. to 4:00 p.m.



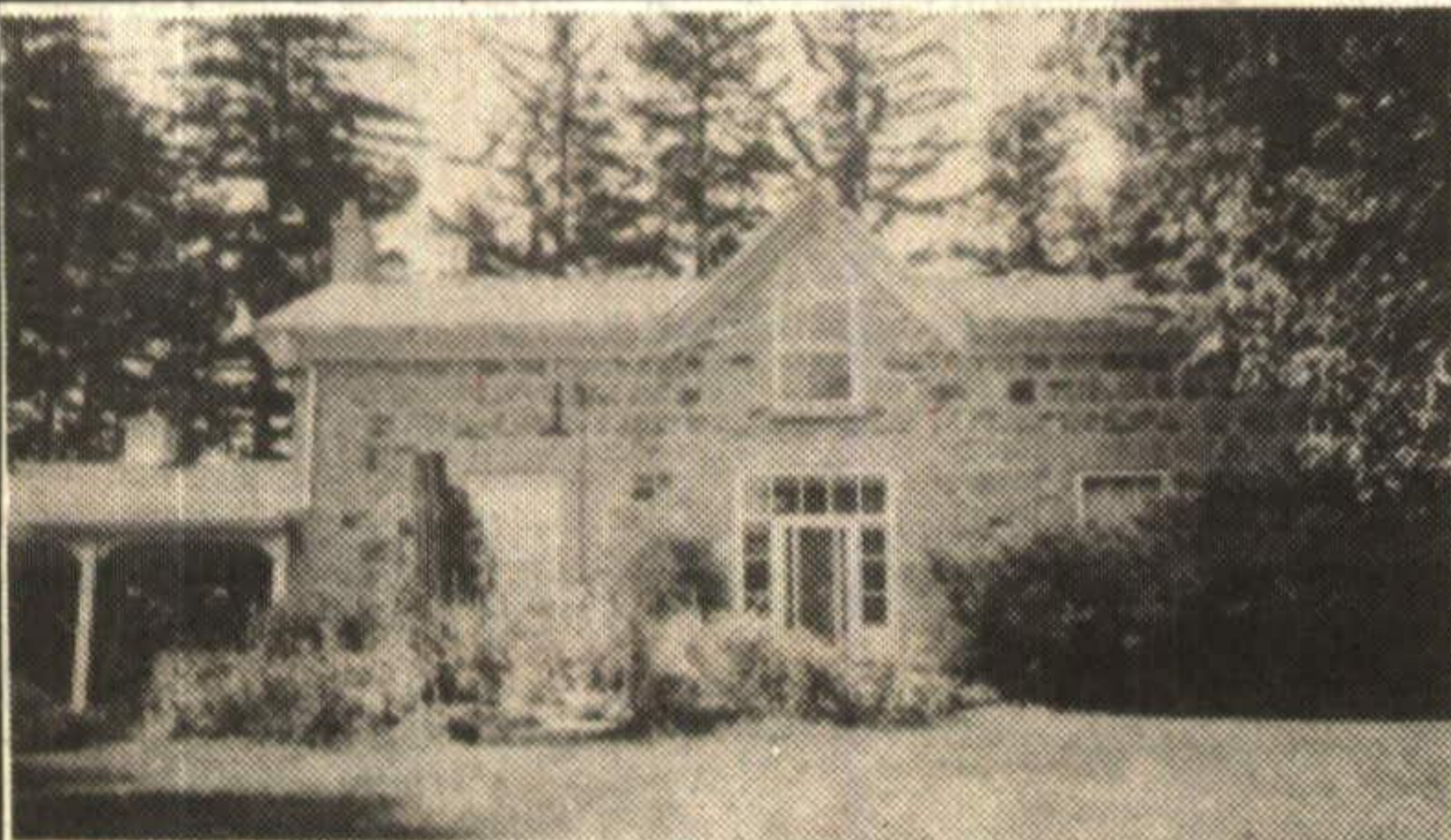
21 CREDIT RIVER ROAD, ERIN
Hostess: MARG SUITOR*

OPEN HOUSE
SUN. SEPT 3 1:00 p.m. to 4:00 p.m.



R.R. #1, ORTON
Hostess: MARG SUITOR*

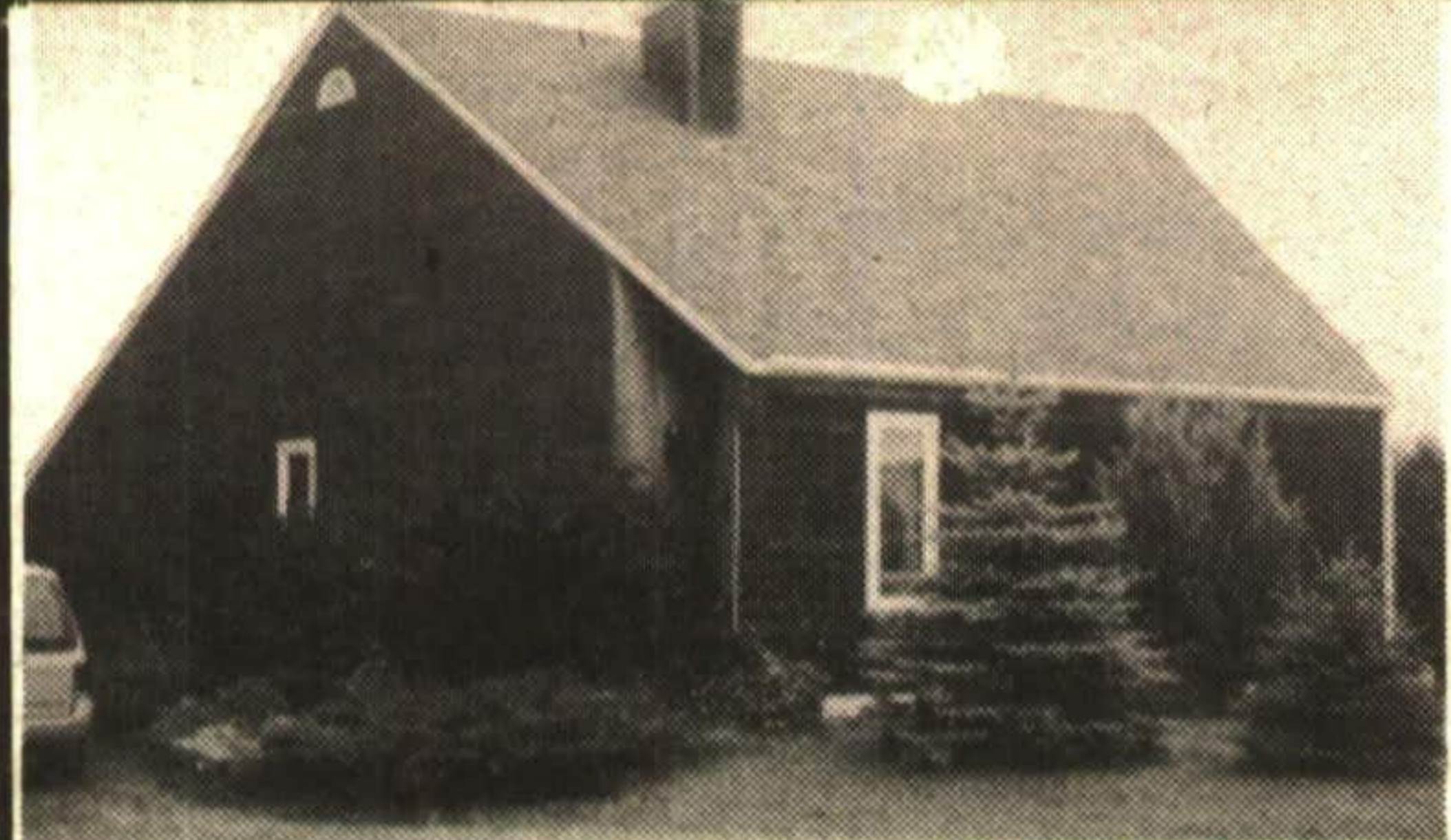
Directions: Trafalgar Road North to 24 Hwy. north of Hillsburgh to Orton Rd. and left to the Second Line. Follow the signs.



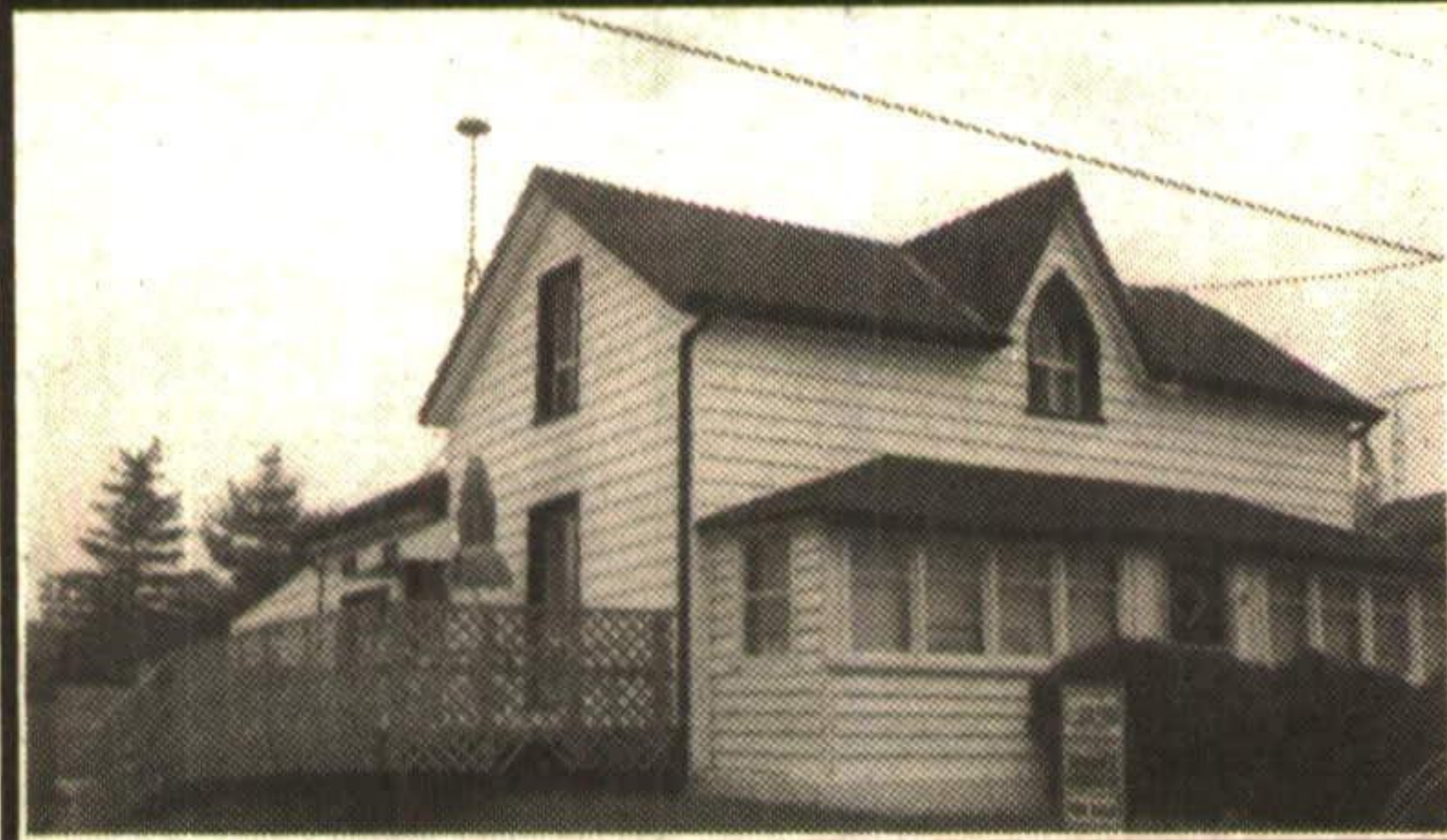
PICTURE BOOK STONE
Classic 1800's stone home on 100 acres with commanding views. Centre hall plan, pumpkin pine floors, high ceilings, approx. 2600 sq. ft. great barn with lots of windows. Manicured gardens. \$399,000.
MARG SUITOR*.
95-2-467



PRIVACY ON 23 ACRES!
Mature trees surround this 3 bedroom bung., open fields with pond and bush with west Credit River. Listed at \$299,900.
MARG SUITOR*.
95-2-494



RETIRED OR STARTING OUT
A wall of windows overlooks lake - open concept master suite with large 4 pc. bath. Mature landscaping.
MARG SUITOR*.
95-2-254



FIRST TIME BUYERS \$119,900
This 3 bdrm., storey and half on 55 x 144 ft. lot in village of Hillsburgh should be of interest to you. Pine kit. with w/o, woodstove, main flr. laundry, freshly painted LR & DR.
MARG SUITOR*.
95-2-437



PRIVACY PLUS GREAT HOUSE
7.92 acres with R2000 home of approx. 1652 sq. ft., 3 roomy bdrms, kit. & FR with added sunroom. Main flr. laundry, detached 2 car garage.
\$249,900.
MARG SUITOR*.
95-2-462

Your Week Ahead Horoscope

- ARIES** Mar. 21-Apr. 19 It's almost time for school to start. Give greater thought to literary pursuits this year. Expand your knowledge.
- TAURUS** Apr. 20-May 20 Taking on a partner will not solve your immediate problems; however, a fresh face with new ideas will help in the long run.
- GEMINI** May 21-June 20 Financial gain can be had, if you listen to experts; but don't go on a wild goose chase.
- CANCER** June 21-July 22 A great burden has been lifted from your shoulders. You should be able to relax and unwind, now.
- LEO** July 23-Aug. 22 Don't second guess yourself. Make your decisions and stick to them.
- VIRGO** Aug. 23-Sept. 22 Plan a long Labor Day weekend. Devote yourself to one who truly appreciates you. It will reap dividends.
- LIBRA** Sept. 23-Oct. 22 Take advantage of "back-to-school" sales. There may be some items that could be set aside for Christmas.
- SCORPIO** Oct. 23-Nov. 21 Better to send a belated message than none at all. Write a long letter to go with it. It will be greatly appreciated.
- SAGITTARIUS** Nov. 22-Dec. 21 A clandestine meeting will bring a little excitement to your week. Spend time with one you really love.
- CAPRICORN** Dec. 22-Jan. 19 Don't let the dog-days of summer get you down. Avoid the heat and humidity...shop 'till you drop in air conditioned comfort.
- AQUARIUS** Jan. 20-Feb. 18 With the onset of school, social activities begin to pick up. You may have to budget your time more wisely.
- PISCES** Feb. 19-Mar. 20 Financial difficulties may be hard to overcome. Seek advice and help from one who has been in your shoes.



ANNE GENOE
Associate Broker

RE/MAX

SUBURBAN (91) INC.
360 Guelph St., Georgetown
877-5211

My Shopping List For Sept. 1995

I'm working with customers who are looking for these special properties.

1. Retirement Bungalow in older area of Georgetown, approx. 1,000 sq. ft. and must be in good condition. Range to \$170,000.
2. Country home with in-law or potential, situated on one acre or more. Priced up to \$250,000.
3. Turn of the Century homes, for first time buyers. All sizes, up to \$200,000.
4. Large executive bungalow on secluded 10 acres or more, with pond. Completed lower level with walkout is essential. Range up to \$600,000.
5. Completely upgraded bungalow in Byron & Shelley area - up to \$180,000.
6. Fixer upper in country, nice lot, 2 or 3 bdrm, price range up to \$140,000.
7. Lynden Circle Townhouse, backing onto Credit River.
8. Unique retirement home (something a bit different), 10 minutes from shopping. Must have good sized workshop. Up to \$300,000.

If you own one of the above and are considering a move - please give me a call.

WATCH FOR MY SHOPPING LIST ON THE FIRST WEEKEND OF EACH MONTH

ARTHUR F. JOHNSON & ASSOCIATES LTD., REALTOR

Bus. (905) 877-5165
Erin (905) 833-9714
Tor. (905) 874-3040
247 Guelph Street



MARILYN WORRALL
Sales Rep.

Not intended to solicit properties currently listed for sale.



KATHY ELLIS*



*Sales Rep.

ARTHUR F. JOHNSON & ASSOCIATES LTD., REALTOR

247 Guelph St., Georgetown

877-5165

Toronto **874-3040**

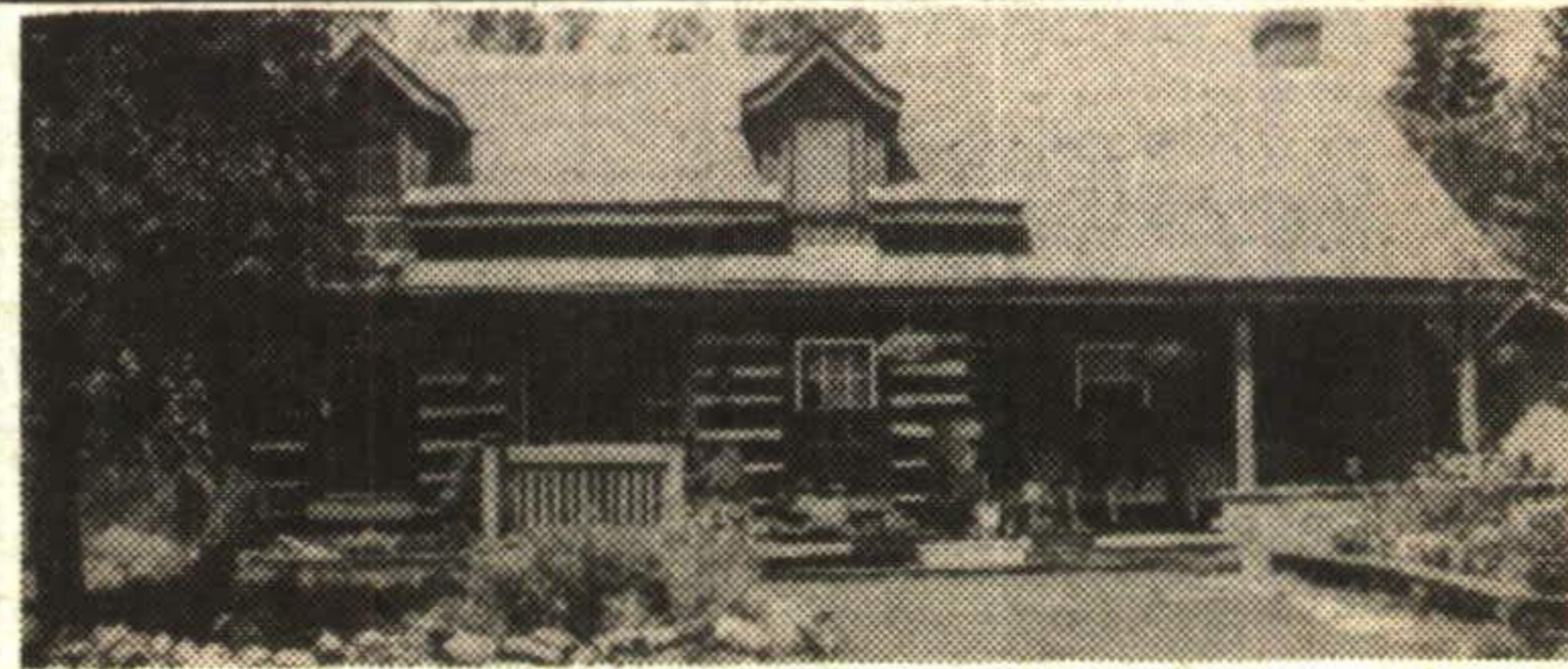
**Our Market's Strong!
Thinking of Selling?
Please give me a call!**

NEW



HORSE FARM

Would you believe - 81+ acres, 5 paddocks, 28 stall barn, 4 bdrm Victorian partially restored with original woodwork and trim, spring fed pond -- lovely views of rolling property. \$435,000.00. 95-2-527



LOVELY LOG HOME IN PARKLIKE SETTING!

Discerning purchasers!! Don't miss this one! This home is approx. 4,000 sq. ft. with huge bright principle rooms, many fireplaces, antique church windows, stained glass windows and doors. Beautifully landscaped. Just move in. \$299,000.00. 95-2-442



BUILDERS HOME!

Approximately 4,000 sq. ft. with additional 2300 sq. ft. downstairs with multi walkouts on all levels. The building quality and decorating are amazing. Property offers views and privacy. \$620,000.00. 5 minutes to Terra Cotta. 95-2-464



FOUR BEDROOM - EXCEPTIONAL VALUE!!

Lovely professionally decorated home with pool and patio. Almost 3,000 sq. ft. - finished basement - unbelievable value - \$234,900.00. Vendors are motivated. 95-2-466