



**CAROL McMURRAY\***  
877-5165

Tor. 874-3040  
24 Hour Pager  
\*Sales Representative



ARTHUR F.  
**JOHNSON & ASSOCIATES**  
LTD., REALTOR



**LOVELY RAVINE VIEWS**

Attractive 3 bedroom sidesplit on gorgeous lot on popular Regan Crescent. Features include 3 washrooms, family room with fireplace, upgraded kitchen cabinets, master with ensuite & more. Call now to view. \$239,900. 95-2-353

NEW PRICE



**ON THE CREDIT RIVER**

Nestled on 6 acres in beautiful Glen Williams, this spectacular estate property is truly one of a kind and will not be on the market for long! By appointment only - Carol McMurray\*. \$299,900. 95-2-354



**GET AWAY FROM IT ALL**

Nestled on 3.4 acres in charming Terra Cotta... gorgeous property with ravine & stream and municipal water planned for Fall 1995! Bright and attractive modern home. A must to see! ASKING \$299,900. 95-2-298

**MUST SEE INTERIOR \$114,900**

Completely renovated semi on quiet street. 2 bedroom, 2 washroom, main floor laundry, detached garage and very low taxes and utilities. 95-2-279



15 ACRES . . . 5 MINUTES WEST OF GEORGETOWN . . . CALL FOR DETAILS

DIAL TORONTO OR MISSISSAUGA  
TOLL FREE courtesy of  
**JOHNSON & ASOCIATES**  
450-8000



LOOK FOR YOUR NEW HOME HERE IN THE REAL ESTATE Marketplace



**MARVYN MORGAN**

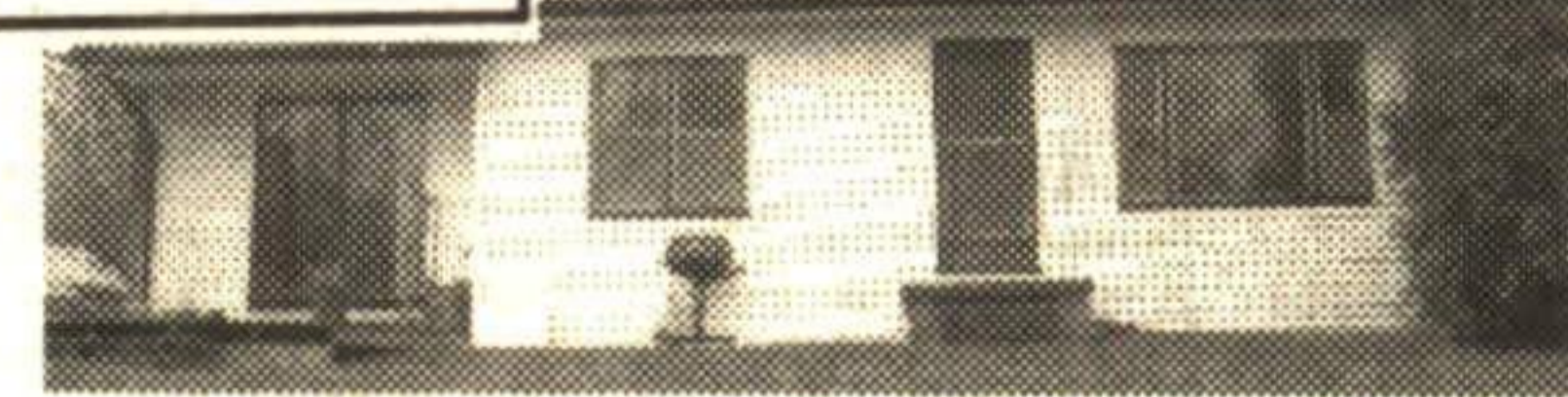
Associate Broker\*\*

(519) 853-2086



BLUE SPRINGS  
Realty (Halton) Corp.  
Tor. Line (905) 874-3053

NEW PRICE



**GEORGETOWN SPECIAL \$149,900**

Sparkling detached home overlooking creek on treed lot. Skylights and hide-away loft master bedroom. Elegant living room & dining room. RMAC95-034



**STEPS TO LAKE \$164,900**

Wonderfully modern spacious home. Sliding doors lead from dining room to huge wrap-around deck. 2 washrooms. RMAC95-037



**\$195,000**

**SUPER INVESTMENT OPPORTUNITY**  
Store + 2 apartments + shed. RMAC95-030



**EDGE OF TOWN**

Charming home! Country-sized kitchen, 2 bathroom with large garage. \$159,900. RMAC95-053

34+ Acres, South of Acton, House, Shop & Barn. \$274,900.



ACTON OFFICE  
519-853-2086  
ROCKWOOD OFFICE  
519-856-4348  
TORONTO LINE  
905-874-3053



Gord Dawe  
Assoc Broker



Michele Dawe  
Sales Rep.

OVER 35 YEARS OF EXPERIENCE SELLING HOMES IN YOUR AREA

Member of Brampton & Guelph Real Estate Boards



**\$139,900**

**GREAT FAMILY STARTER**

Great starter, 3 bedrooms, family room, eat-in kitchen, close to schools, shopping, family neighbourhood. Reduced to sell. Please call Michele\*. RMRW94-074



NEW!

**JUMP RIGHT IN TO THIS ONE!**

Inground pool - Large raised bungalow, Solarium, finished basement with bar & air-tight stove. Master with ensuite & walk-in closet. Large Living & Dining area. Great family neighbourhood \$164,500. Please call Gord\*\* or Michele\*. RMRW94-042



**\$184,900**

**TASTEFULLY DECORATED STONE HOME**

Quaint stone cottage. Deep sills, old fashioned tub. Pleasant blend of old and new. Private back yard. Close to the river. Please call Michele\* or Gord\*\*. RMRW95-036



**CLASSIC HORSE FARM**

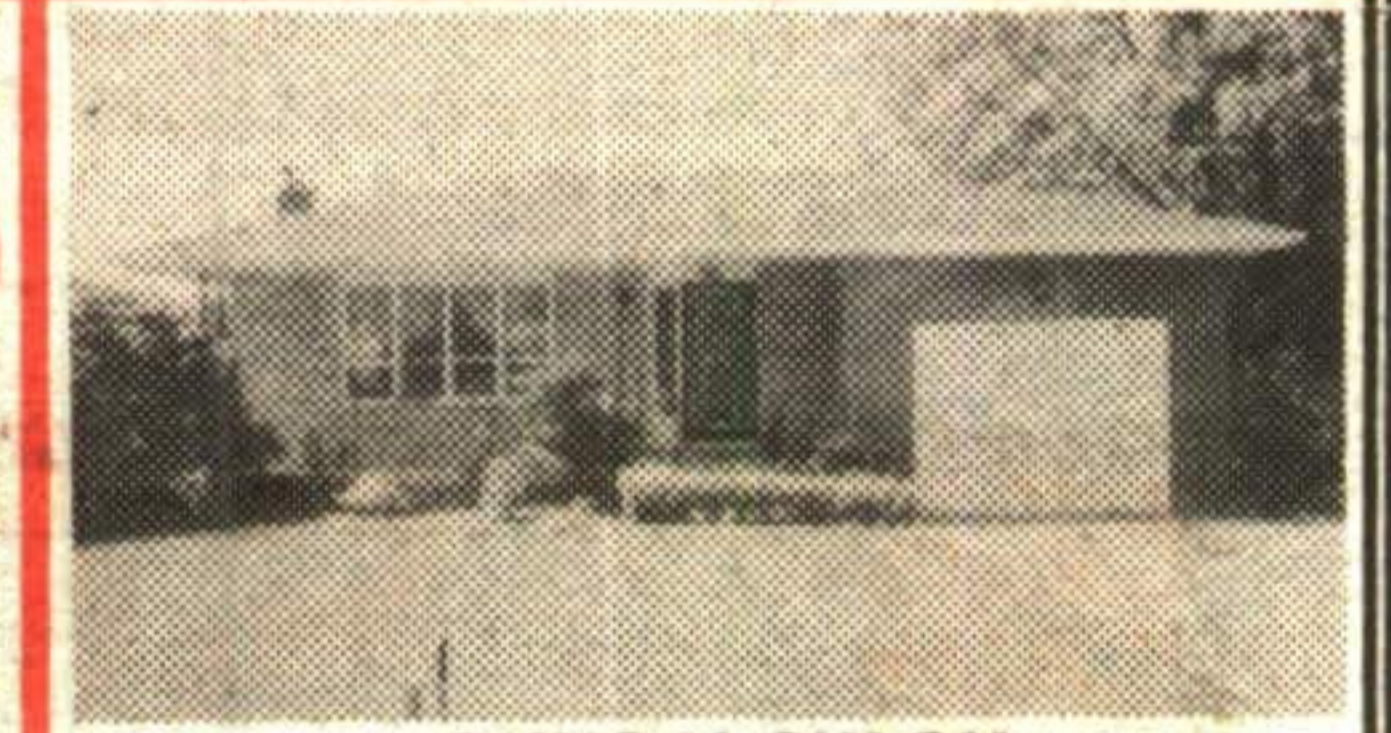
45 acres. Top of the line arena with viewing loft & 10 box stalls - sand ring - 6 paddocks. Large 4 bedroom home, 2 bay garage with offices, stocked pond. Excellent facility. Call Michele\* or Gord\*\*. R94-069



**\$157,900**

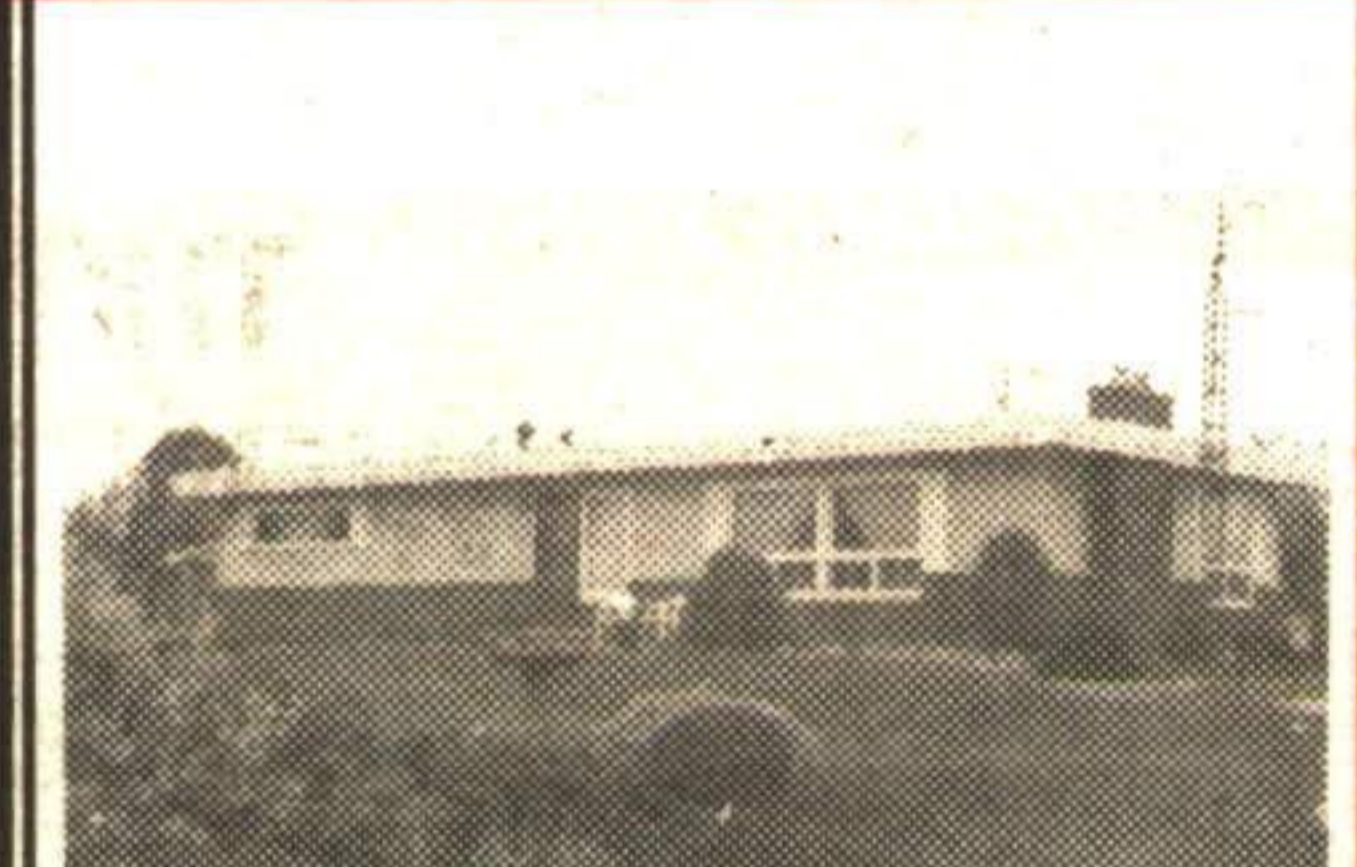
**ALL YOU NEED IN A HOME**

Village of Rockwood. Great backyard, eat-in kitchen with walkout to deck. 3 bedrooms plus 4th down, rec room, office & 2nd bathroom. Call Michele\*. RMRW94-066



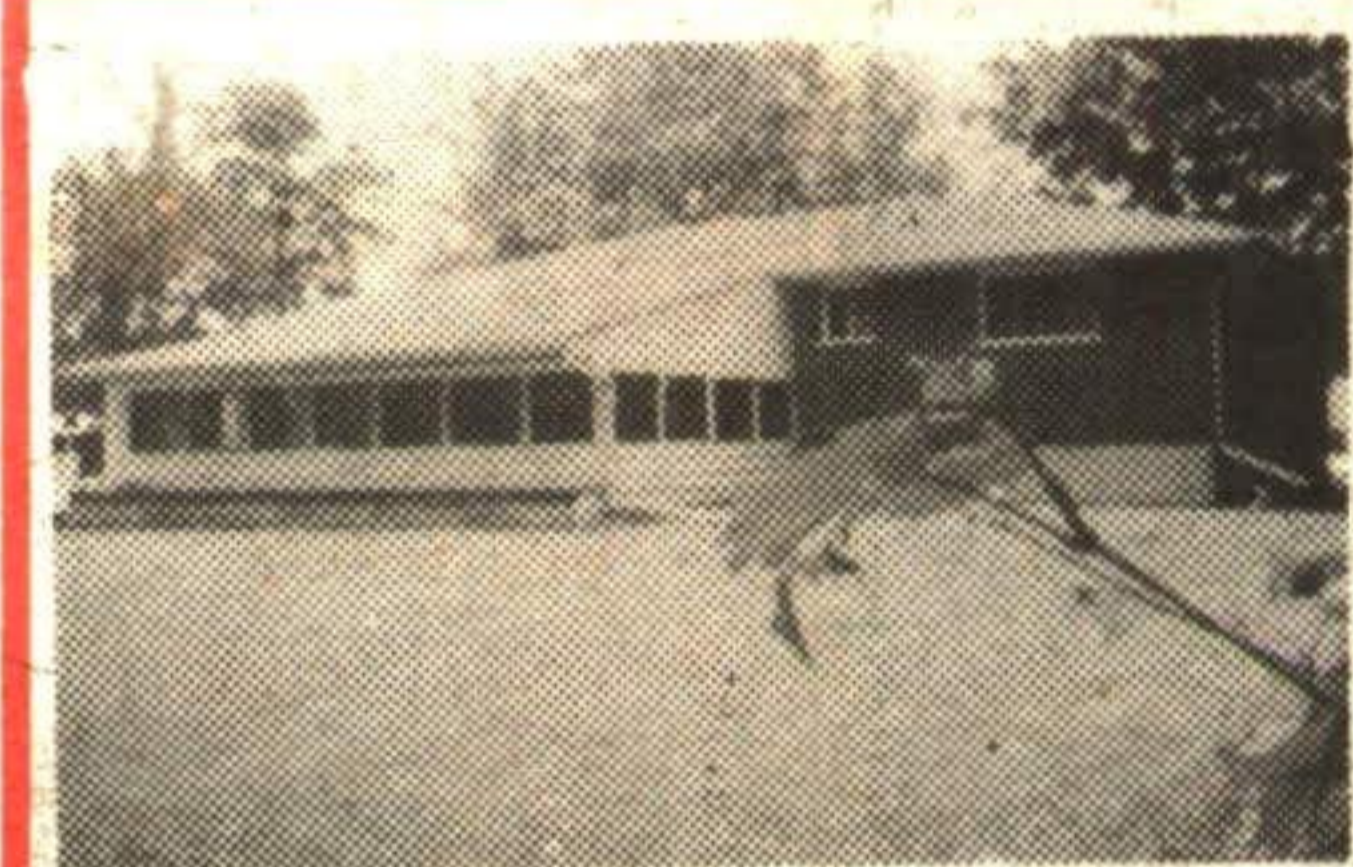
**BUNGALOW ON CONSERVATION LOT**

Conservation lot, 272 ft. deep backing onto Richardson Creek. Quality brick bungalow. Plaster construction, finished basement. Professionally landscaped. Please call Michele\* or Gord\*\*. \$169,900. RMRW95-010



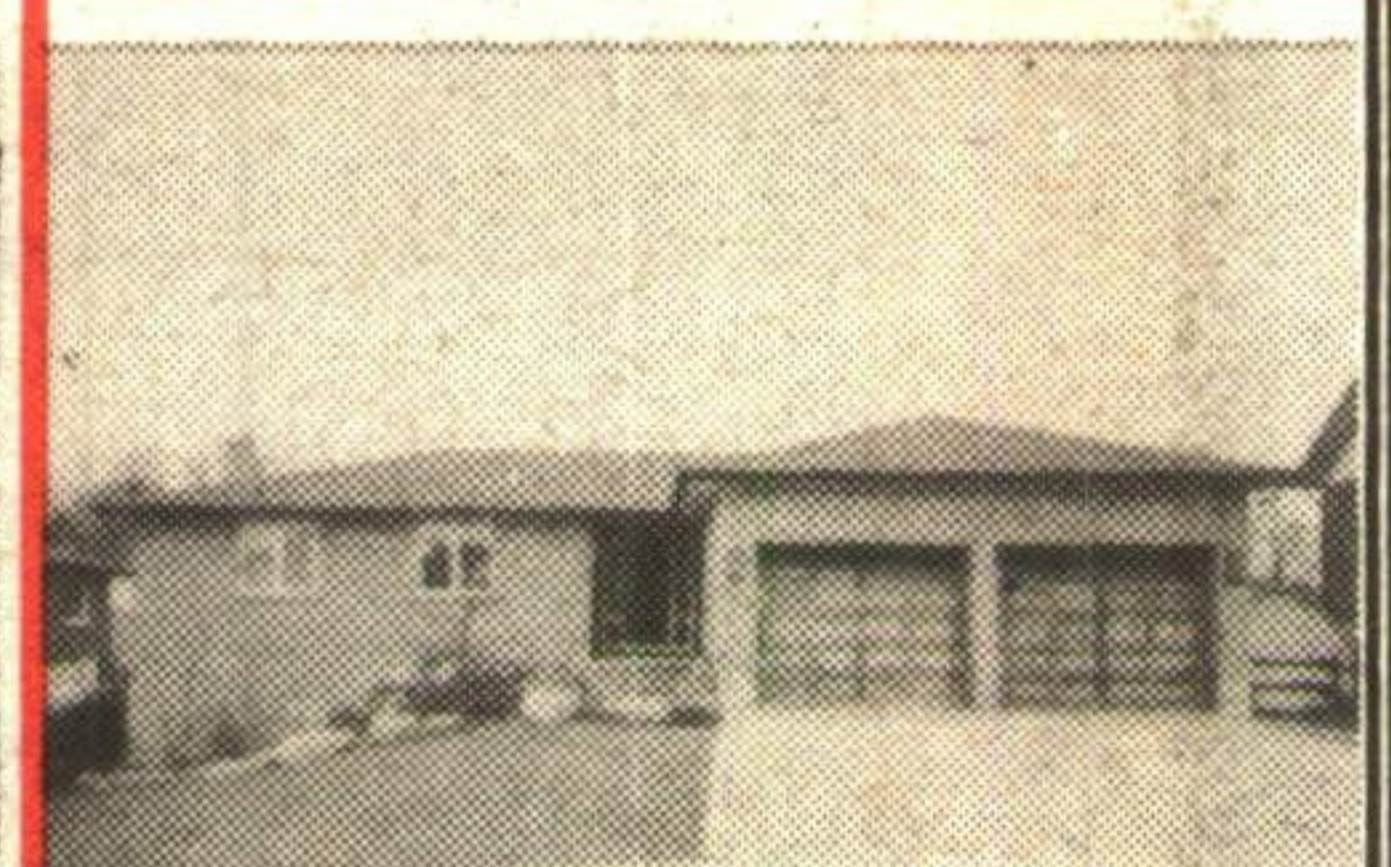
**WHAT DOES \$249,000 BUY?**

11 acres, shop, 30' x 80', greenhouse, large 2500 sq. ft. 10 room bungalow. 10 minutes north of 401. Call Michele\* or Gord\*. RMAC95-045



**GREAT COUNTRY \$209,000**

2.8 acres, 500' frontage, brick bungalow, 3 plus bedrooms, large rec room with woodstove, fireplace insert in living room, covered patio 26'x17', walkout to 17'x31' inground pool, detached garage & shop 27'x22'. 10 minutes north of Milton. Call Gord\*. RMRW95-017



**QUALITY & AREA**

Prestigious brick bungalow, walkout to deck from DR, finished rec room, 3+1 bedrooms, tastefully decorated and landscaped. Please call Gord\*\* or Michele\*. \$194,900. RMRW95-026

\* TO BUILD YOUR DREAM - 10 ACRES\* Pond site available. Partial clearing. \$79,900. Call Michele\* RMRW95-009

OPEN HOUSE



**OPEN HOUSE**

Sun. from 2 to 4 pm  
Victoria St. - Everton

From Hwy. #7 take Hwy. #25 north to Ospringe (Hwy. #24) turn left to the Coach House Rest. and follow signs.

10 min. north of Guelph on Hwy. 24.

Great stone and cedar home, generous room sizes - park like setting. Come and see - asking \$207,900.

**Gary A. Rupert, RRS**  
Associate Broker  
Remax Realty Specialists Inc.

CALL  
Toll Free 1-800-829-"GARY"