

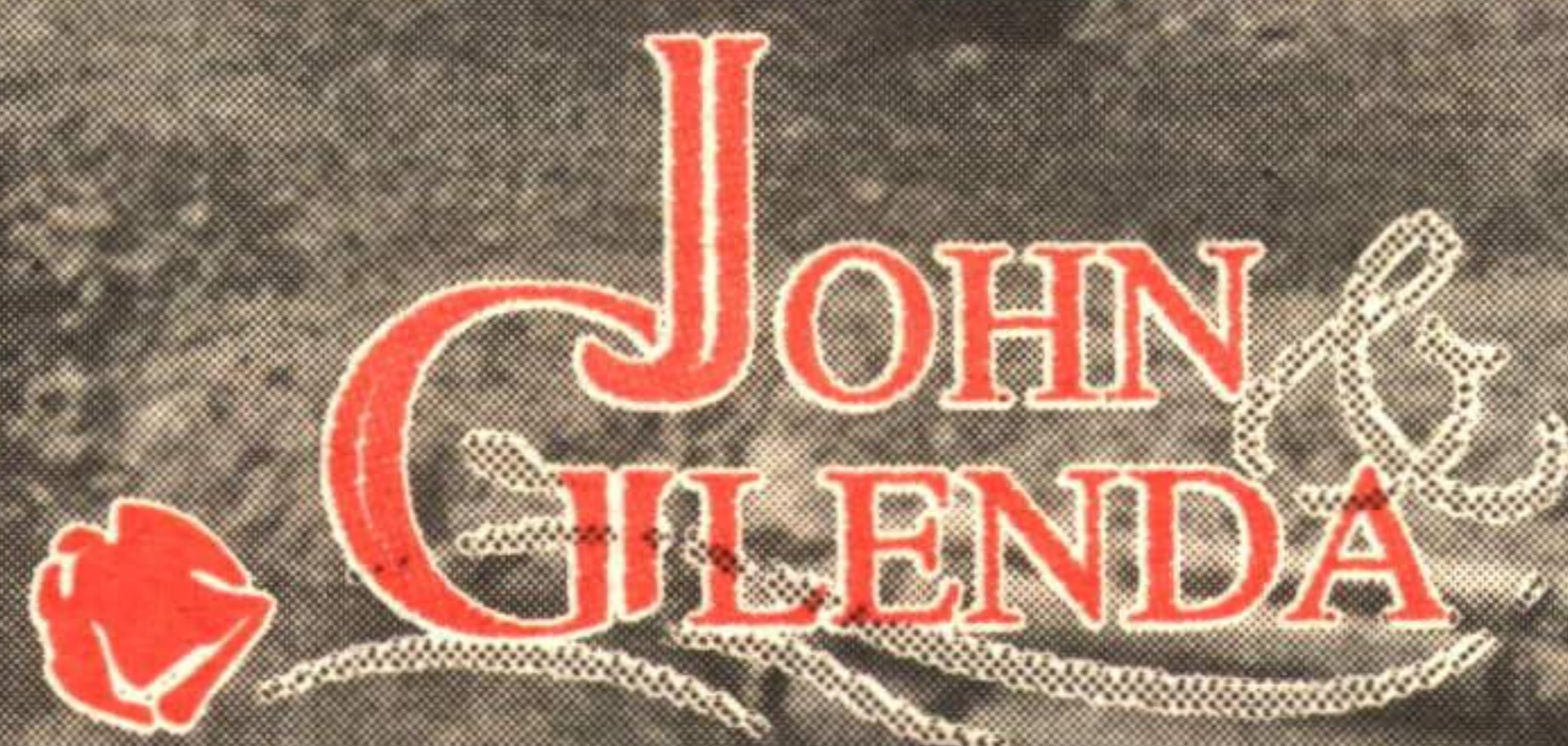
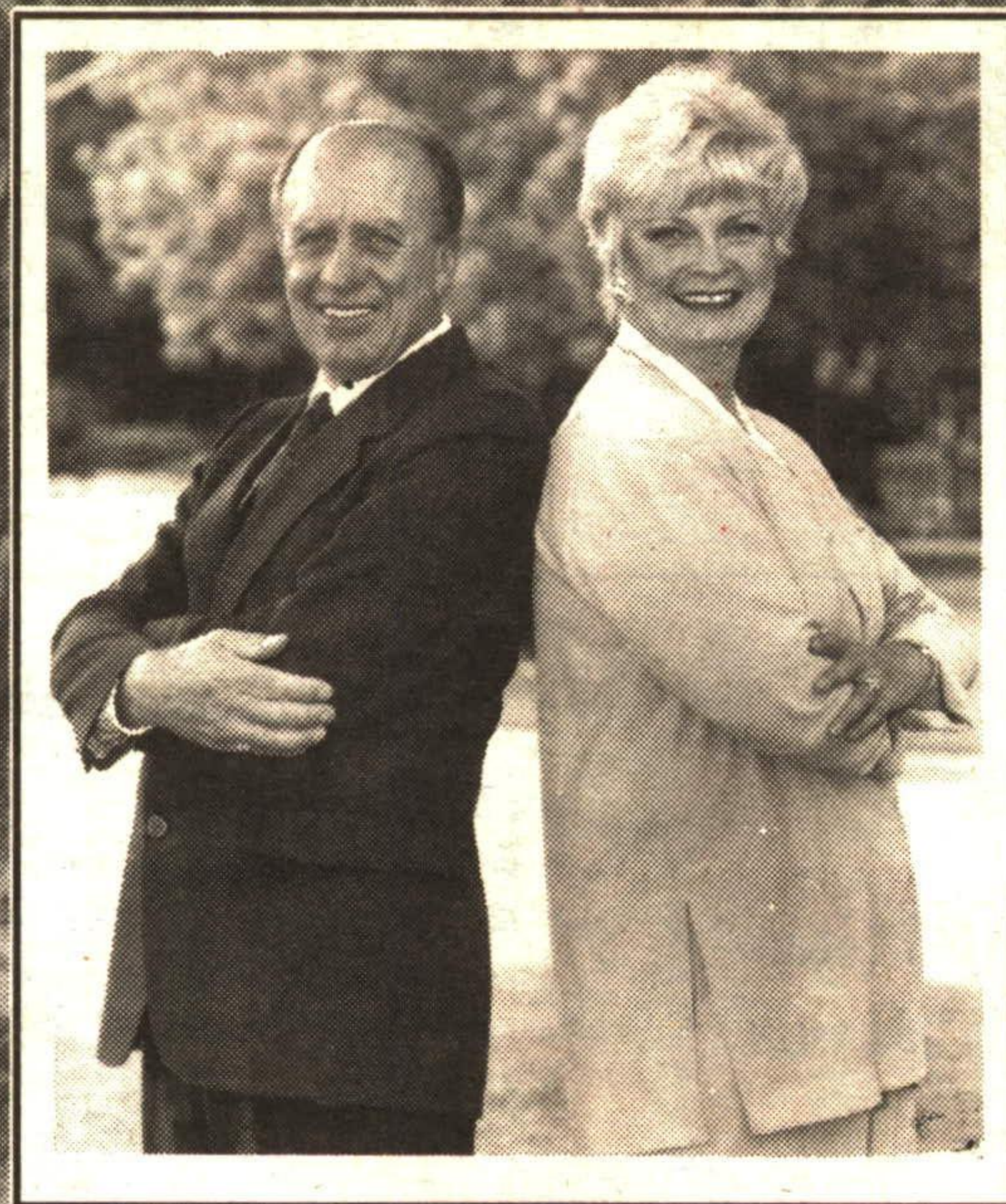


\$229,900

**CLASSY HOME**

Greenhouse kitchen with island counter; 3 bathrooms; antique brick fireplace; extensive decking and landscaping with rock garden in full splendor. Truly a classy home in Georgetown, for the fussy buyer! 95-2-312

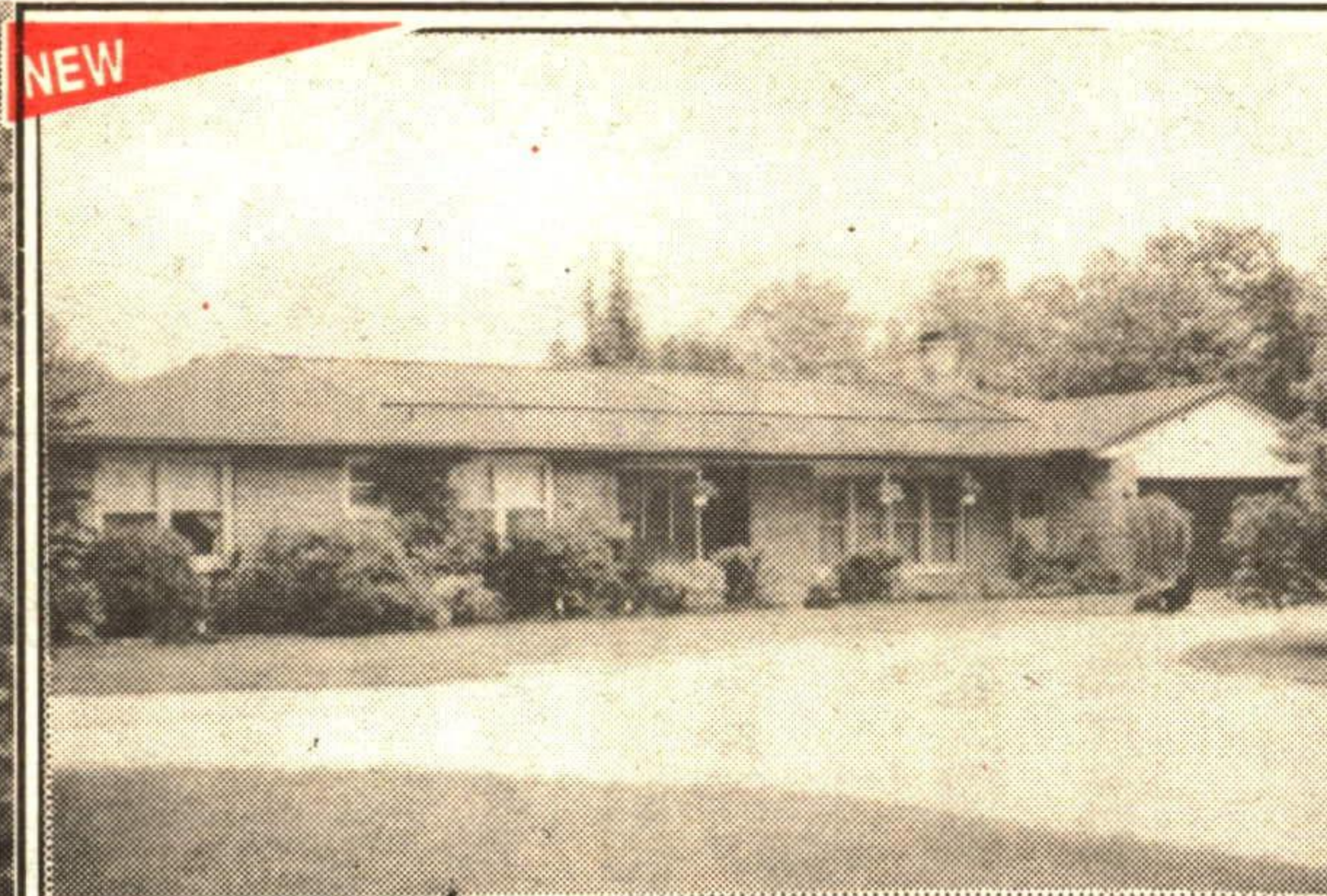
**LIFESTYLES BY**



*Planting Strong Roots for Tomorrow*  
**John Hill & Glenda Hughes**  
 Sales Representatives\*

Business: 877-5165 Toronto: 874-3040  
 Res: 877-8402 Erin: 833-9714

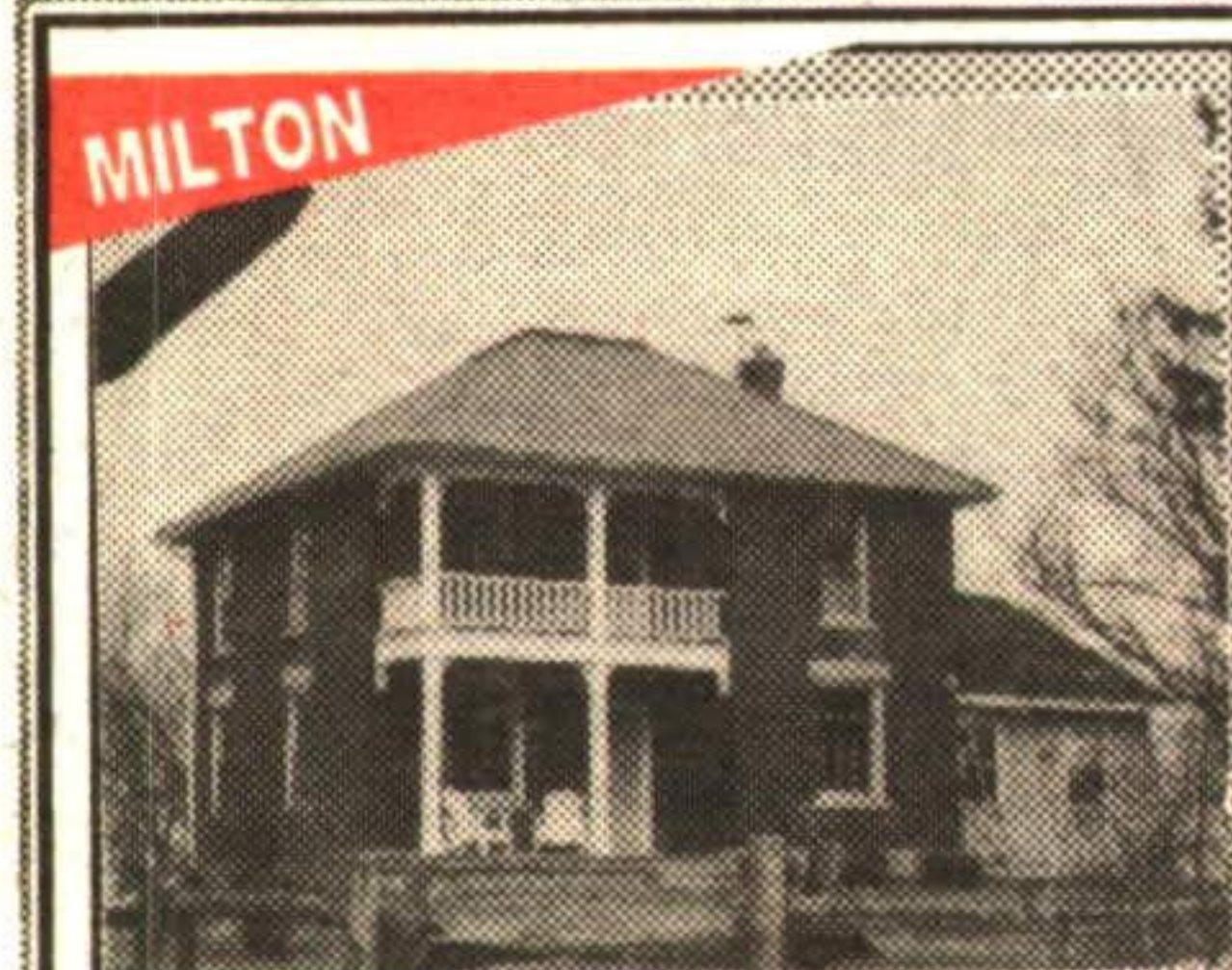
ARTHUR F. JOHNSON & ASSOCIATES LTD., REALTOR



NEW

**SPACIOUS RANCH BUNGALOW  
 15 ACRES**

Beautiful and peaceful setting for this 4 bedroom bungalow with walkout basement, trout stream and pond, inground pool, 30 mins. to Georgetown. \$269,900. 95-2-413



MILTON

**GORGEOUS VICTORIAN!**

Milton Township location for this wonderful restored home. Centre hall plan, two staircases, 400 sq. ft. "Great" room. 1.23 acres with barn & paddocks. \$284,900. 95-2-281



MILTON

**7.6 ACRES LAND**

Newly severed parcel of land on Guelph Line over 500 ft. of road frontage. Open rolling pasture land. \$154,900. 95-2-407



GEORGETOWN

**GEORGETOWN SOUTH**

Extra large pie shaped lot that's fully fenced and decked for the kids. Loads of space with exceptionally large master bedroom and ensuite. Country decor prevails in this beautifully landscaped home for just \$204,900. 95-2-387



NEW

**COUNTRY WITH CONVENIENCE!**

Great location with terrific access to major arteries for the commuter. Cute bungalow on 1/2 acre that has great features. Two fireplaces, finished rec room, eat-in pine kitchen, local Georgetown phone number and shows beautifully. Priced to sell! \$184,900. 95-2-419



**MARY MAAN**

SALES REPRESENTATIVE



**877-0173**

Royal LePage Real Estate Service Ltd., Broker

*Exposing your property to over 23,000 agents through the Toronto and Brampton Real Estate Boards*



**CAREFUL! IT'S LOADED**

California style, open concept, newer home, master bedroom with 5 pc. ensuite, main floor laundry room, open zero clearance 2 sided fireplace for that warm glow in the winter time for entertaining in the living & dining room area, Californian shuttered, all faucets by Moen, bathroom fixtures by Kohler, Series 800 doors. 2200 sq. ft. of pure quality. Call Mary\* to view. 31-121



\$237,500

**SHOULD BE ON A MAGAZINE COVER**

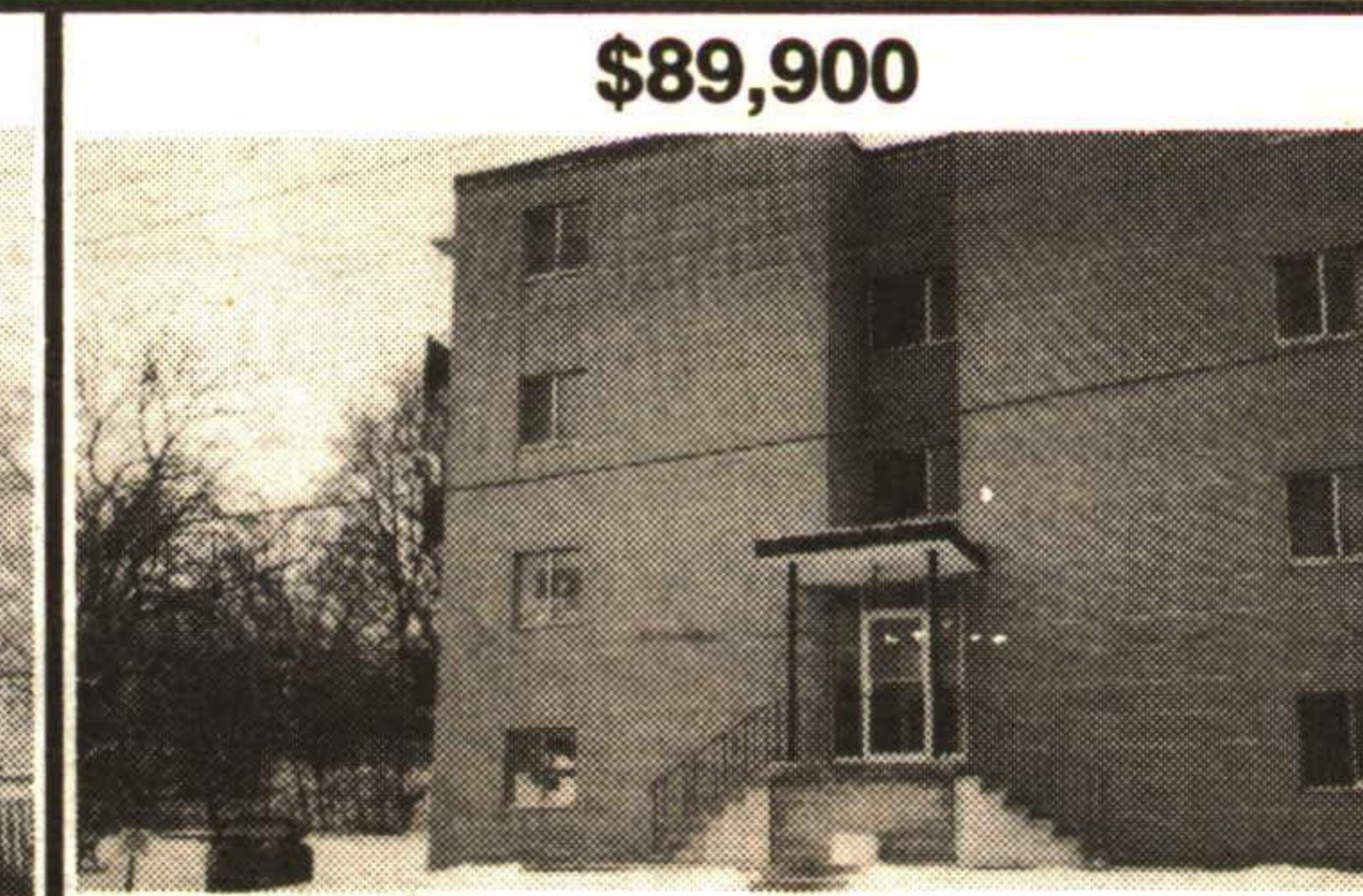
Tension free home of bright & large rooms, beautiful country raised ranch, finished to perfection, country kitchen with lazy susan, pull out shelves, built-in dishwasher & walkout to a deck overlooking peaceful countryside, master with ensuite, rec room with full brick fireplace. Call Mary\*. 31-111



\$249,900

**OLD & QUIANT - BUT UP TO DATE**

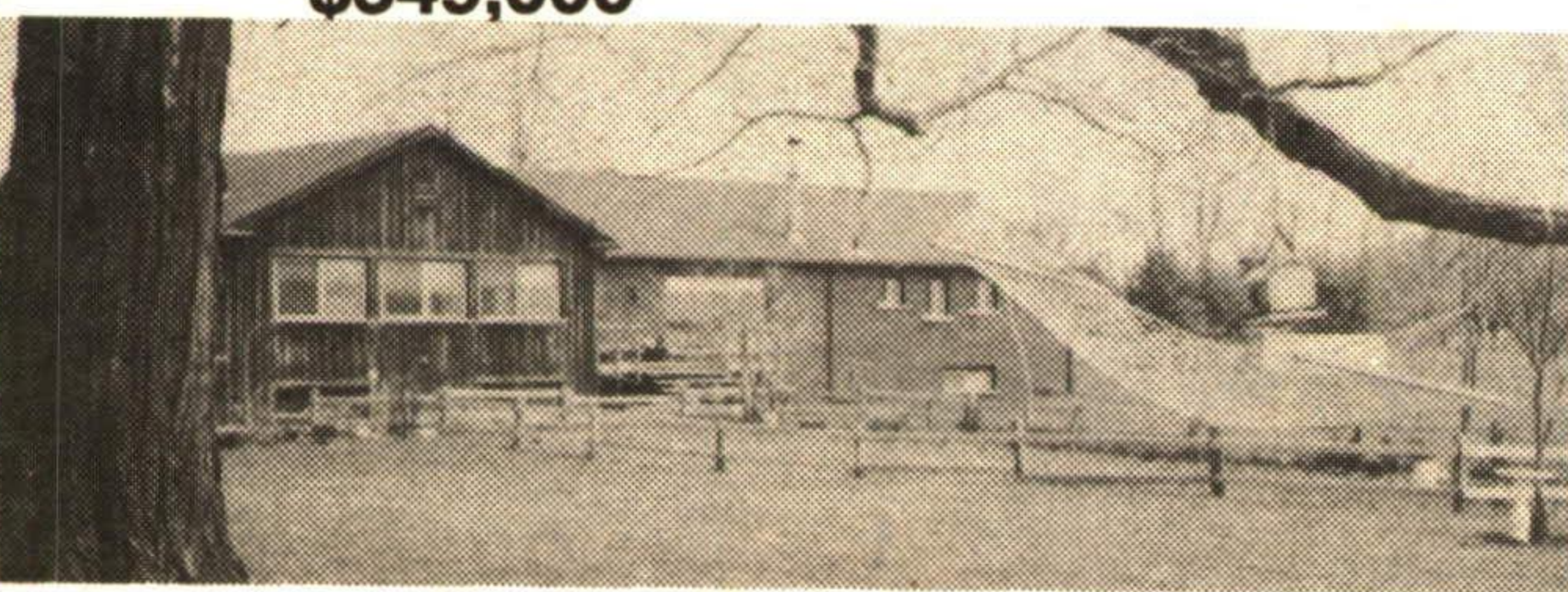
You didn't know in 1885 they had central air, central vac, 200 amp service, wiring, plumbing, window insulations, new roof, this house (built in 1885) has all the above - and high ceiling, large rooms, wide plank floors and a beautiful country lot. Want to see it? Call Mary\*. 31-112



\$89,900

**CHEAPEST IN GEORGETOWN**

Main level 2 bedroom condo, walking distance to all the facilities, medical building, stores, library, hospital, parks, churches, GO station, assumable mortgage of \$76,000 at 7.25% till '97. Condo fees include heat, hydro, water, parking, building 2 common elements insurance. Call Mary\*. 31-108



\$349,000

**94 ACRES FOR \$349,000**

+ a bungalow with marble floor central hallway, peg oak flooring in living room, dining room & the bedrooms. Extra large country kitchen, all the rooms are large & ex large 4 stall barn. Creek running through the property minutes to Blue Springs Golf Course, suitable for many uses, would make an excellent horse farm. For viewing please call Mary Maan\*. 31-113



NEW

\$249,000

**REAL DEAL FOR A SMART SHOPPER!**

Family run fruit market, employ yourself, your wife & few others. Needs some hard work & imagination to turn this into a goldmine, located on busy Hwy. 7, just west of Georgetown. Location is the best & so is the price. Call Mary\*. 31-119



\$273,900

**DELREX BLVD. TO ROSEFIELD TO 8 BAYLOR  
 OPEN PLAN WITH LOTS OF PRIVACY**

Designed for generous space for today, tomorrow & beyond. Double entry foyer takes you into a majestic great room & kitchen combination with 9 - 6 ft. high ceilings, skylights, stone fireplace, walkout to pool & rock garden. Family & 3 bedrooms has 60 oz. of plush carpet, potential for an in-law suite. Too many features to mention. If you are in this price range, this one is a must see before you settle for ordinary. 31-115