



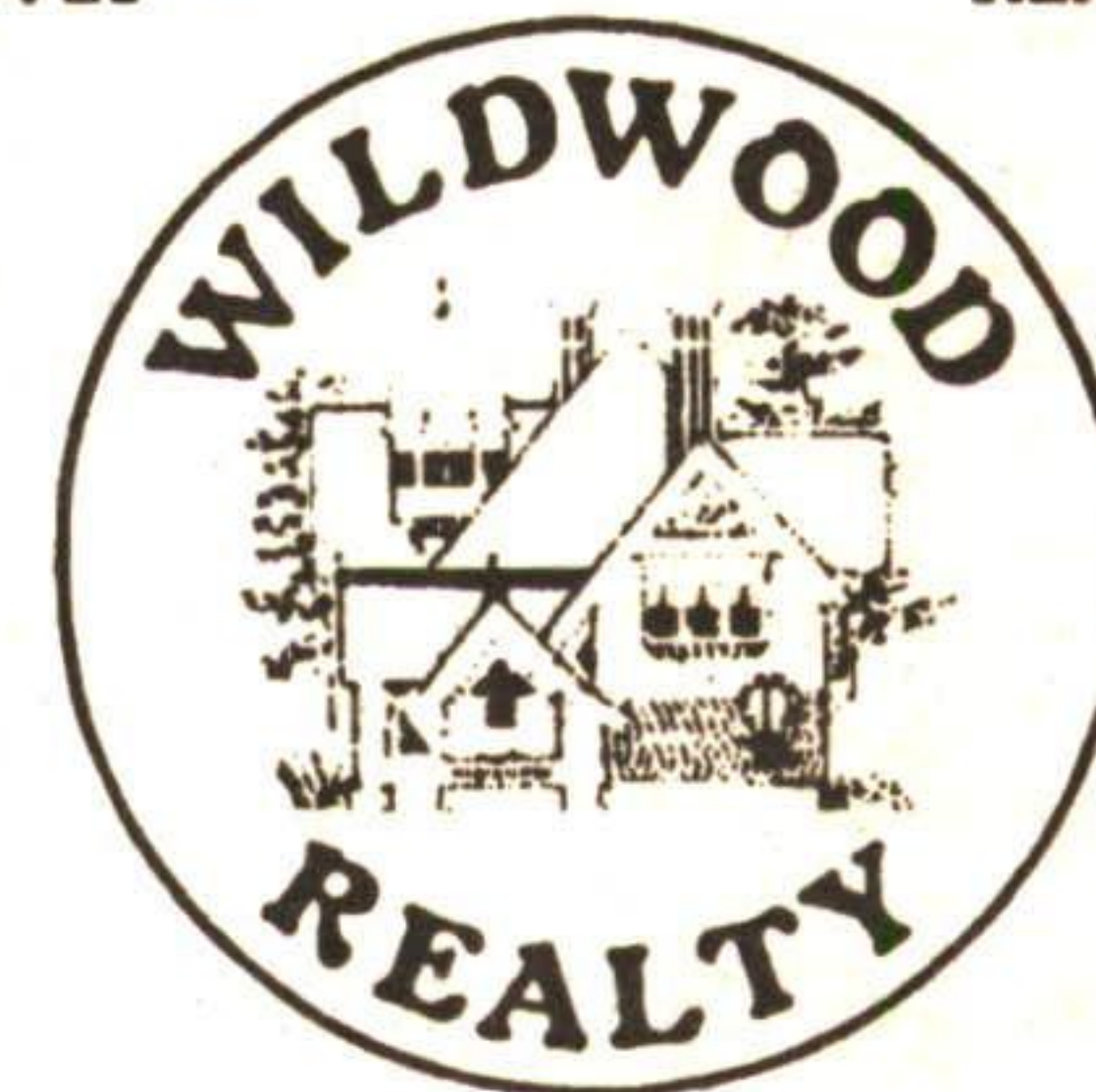
LINDA ELMSLIE
Sales Representative*

Wildwood Realty Inc.

121 PRINCE CHARLES DRIVE, Georgetown

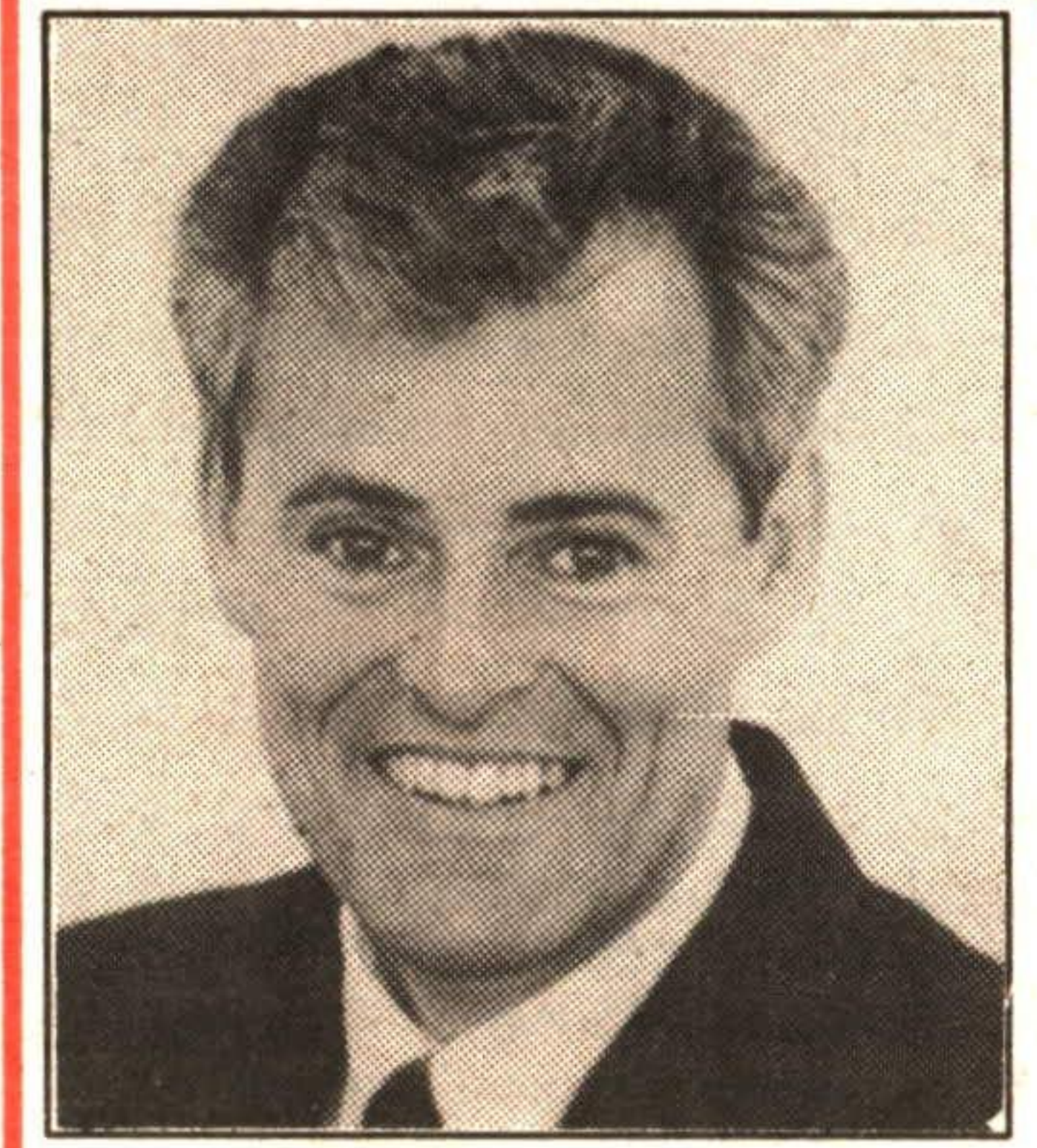
REALTOR

873-8839



454-8706
BRAMPTON LINE

Serving Georgetown Area Since 1970



BRUCE ELMSLIE
Broker/Owner***

Your House SOLD in 90 Days or Bruce Elmslie Buys It!!!
Top Market Price Guaranteed!

WOW!



HOBBY FARM 7 ACRES

Rolling, treed acreage, great set up for horses. Neat as a pin bungalow with familyroom addition and built-in hot tub, triple glazed windows, many upgrades, finished basement with w/o. Kidney shaped inground pool and barn for the horses. NEW PRICE! \$249,900. WW-269



SOLD LIST WITH WILDWOOD REALTY

22 LASBY LANE



GEORGETOWN GEM!

Huge lot for the kids - Affordable 3 bedroom family home with hardwood floors, gas fireplace in living room, gleaming new kitchen and new windows. Better hurry!! \$139,900. WW-281



4 ROLLING ACRES!

Charming, open concept log home located between Georgetown and Erin. Entertainment size kitchen. Living room boasts stone fireplace and pine floors, three generous bedrooms plus terrific finished loft! Asking \$269,000. Call today... WW-270



DEAD END STREET

On the edge of Bovis subdivision you'll find this tidy sidesplit with a welcoming entrance foyer and large, comfortable rooms. Quick closing would be great. Priced right at \$164,900!! WW-293



WOW!! \$149,900!

This could be your lovely new home! Clean, clean 3 bdrm (huge master with walk-in closet), two bathrooms, finished bsmt. Walkout doors from dining room to new deck and tidy yard. No neighbours behind! Directions: 5A Pennington Cr., south of the plaza on Mountainview to Pennington Crescent. WW-266



NEW

EDGE OF GEORGETOWN

Very private treed property set nicely back from the road. Pretty, updated kitchen, completely finished basement with gamesroom, fireplace +3 piece bathroom. 2 walkouts to gorgeous "yard-in-the-woods" with inground pool. Priced to sell at \$239,900. WW-287

OPEN HOUSE
SATURDAY, JUNE 10 2-4:30- p.m.
20 SARAH ST., GEORGETOWN
#7 (Guelph St.) to Durham to Sarah
WOW!! PRICED TO SELL!
\$144,900



Three bedroom brick home on quiet street. Basement apt. nearing completion! Central air, central vac. Owner retiring. Come and see! WW-279



WOW!!

100 ACRES - \$139,900

Completely renovated farm house - She'll love it!! Tile drained mostly workable - 10 acre hardwood bush, three barns, 2 silos. One hour drive north of Georgetown - Must be SOLD. WW-241



4 BEDROOM SIDESPLIT

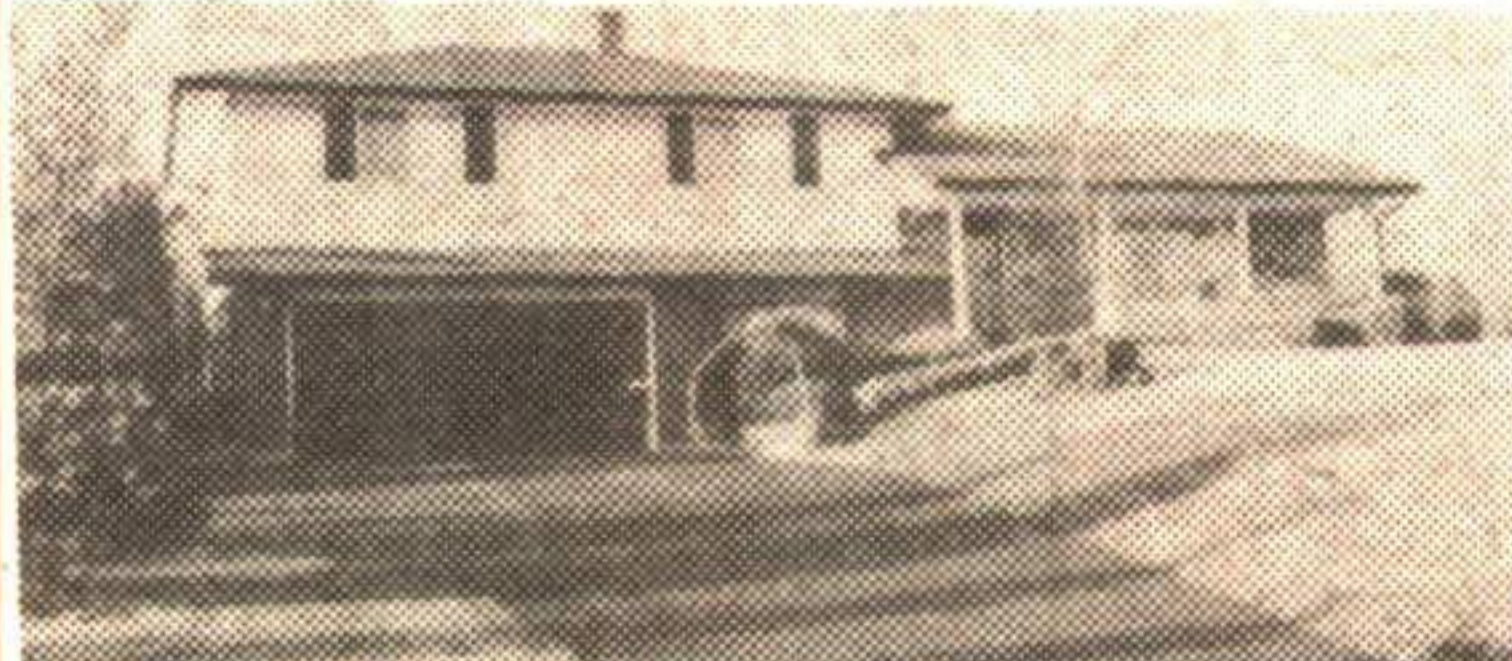
With big fenced backyard, custom deck and kids' playhouse. Hardwood floors, 2 fireplaces, family room. This house shows great!! Access from basement to heated double garage. Call today - only \$176,900. WW-282



NEW PRICE

39 DOD'S DRIVE IN ALTON

Spacious bungalow with oak kitchen, large living/dining room combination with walkout doors to yard. Terrific finished recreation room and oversized garage. Asking price \$157,000!. WW-278



OH! SO SERENE!

One manicured acre just north of Georgetown near Terra Cotta. Large sidesplit with fabulous family/spa room addition. Entire back of the house is windows, 3 baths, finished basement and huge lobby room. A country haven with a winding paved driveway. Asking \$309,000. Directions: Above Mayfield Rd., 4 minutes north of Georgetown Golf club on 10th Line. Drive by then give us a call! WW-263



DOLL HOUSE WITH LARGE ROOMS

This home really sparkles at \$149,900!! Pretty living room, 3 generous bedrooms. Extra high and dry basement with 2nd bathroom rough-in and side entrance. Lot size 66' x 124'. Central air. Good value here... WW-284



INCOME!!

Live in one half and income from other units! Older income apartment consisting of a 3 bedroom unit and 2-1 bedroom units. New gas furnace, recent roof. Separate hydro meters. Asking \$165,000. Call Bruce***. WW-290



HESLOP AREA

\$349,900. Gorgeous executive style home overlooking beautiful wooded ravine. Professionally landscaped yard with inground pool. Home boasts large kitchen, 3 skylights, gas fireplace and much more. Call for more details Andrea Skanes*. WW-AS



BETWEEN GEORGETOWN AND MILTON 1 ACRE

Spacious split entrance bungalow on manicured property - very spacious rooms, entertainment size dining room, sliding doors from country sized kitchen to large deck. Finished lower level, fireplace and walkout to oversized garage. Let's have a look - \$279,900. WW-283



25 McINTYRE CRES.

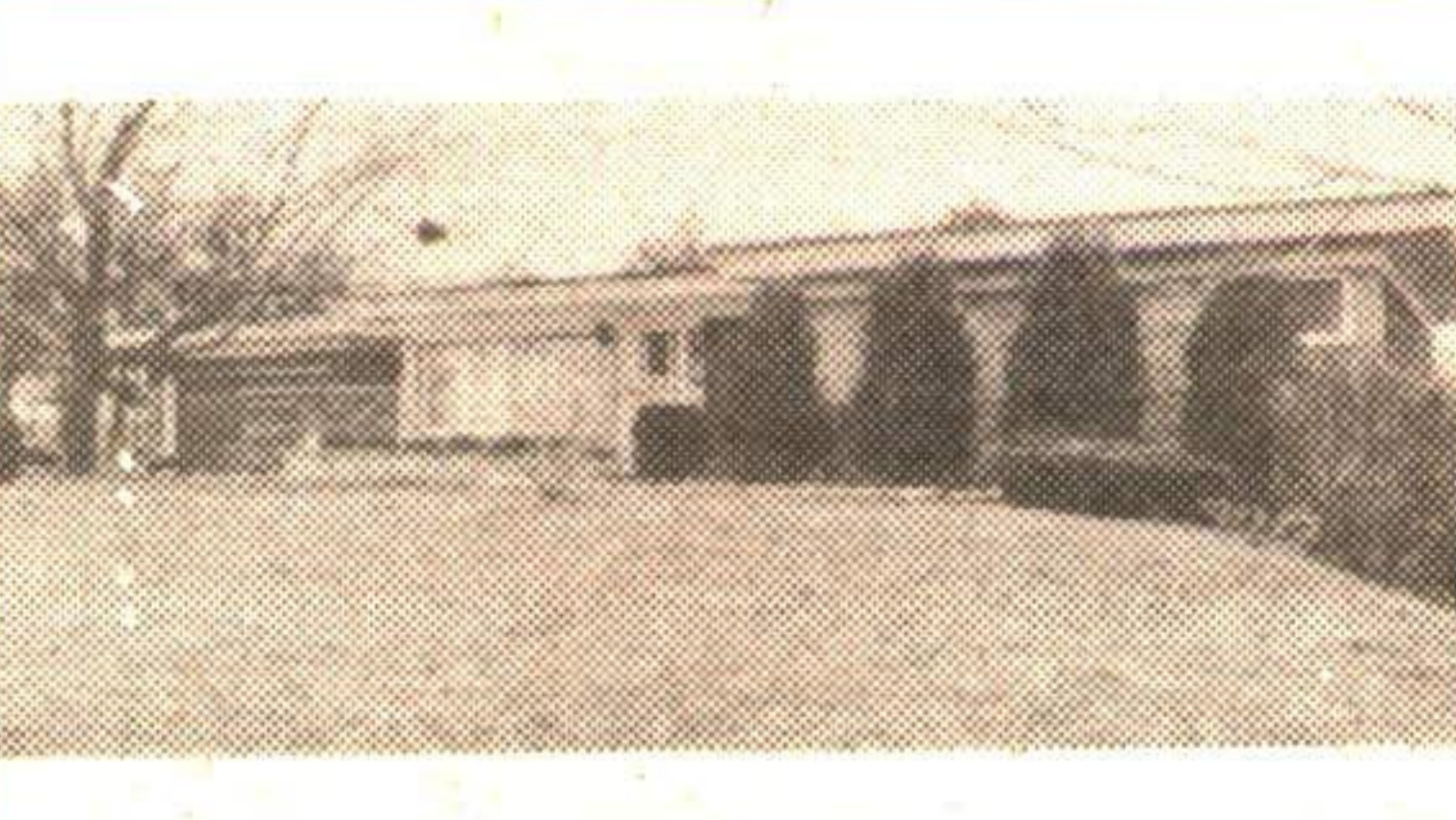
This home "Just Sparkles". All kinds of upgrades including "NEW KITCHEN". SEPARATE APARTMENT. Let tenants help pay the mortgage - you won't be disappointed!! Call "Now" and ask for Brian*, Sales Rep. \$164,900. WW-288



Too New For Photo

WELCOMING, MODERN HOME ON APPROX. 74 ACRES

Formal living and dining room with large low "E" windows and bleached oak floors. Kitchen is a homemaker's delight with honey oak cupboards, pantry and centre island, 4 generous bedrooms, 3 bathrooms... and the list goes on! Asking \$319,000. WW-294



TWO BEDROOM IN-LAW SUITE!

Distinctive ranch bungalow on 2+ gorgeous acres. Paved road! Large rooms, new windows and 2 bedroom in-law suite with basement walk-out! Asking \$279,900! Call today! WW-277



NEW PRICE

LIMEHOUSE HOBBY FARM - 34 1/2 ACRES

Fabulous hardwood bush! Open meadows; everflowing stream runs through property. Good 3 bedroom brick house, barn and implement building. Paved road location. Excellent set up for horses. Better hurry! \$259,900. WW-261



TOP CONDITION... OLDER VICTORIAN HOME

2 separate residences, loaded with charm. Hardwood floors, high ceilings, lots of cupboard space, and large fenced yards. Reduced to \$219,900. Ask for Dean*, Sales Rep. WW-230



INCOME!

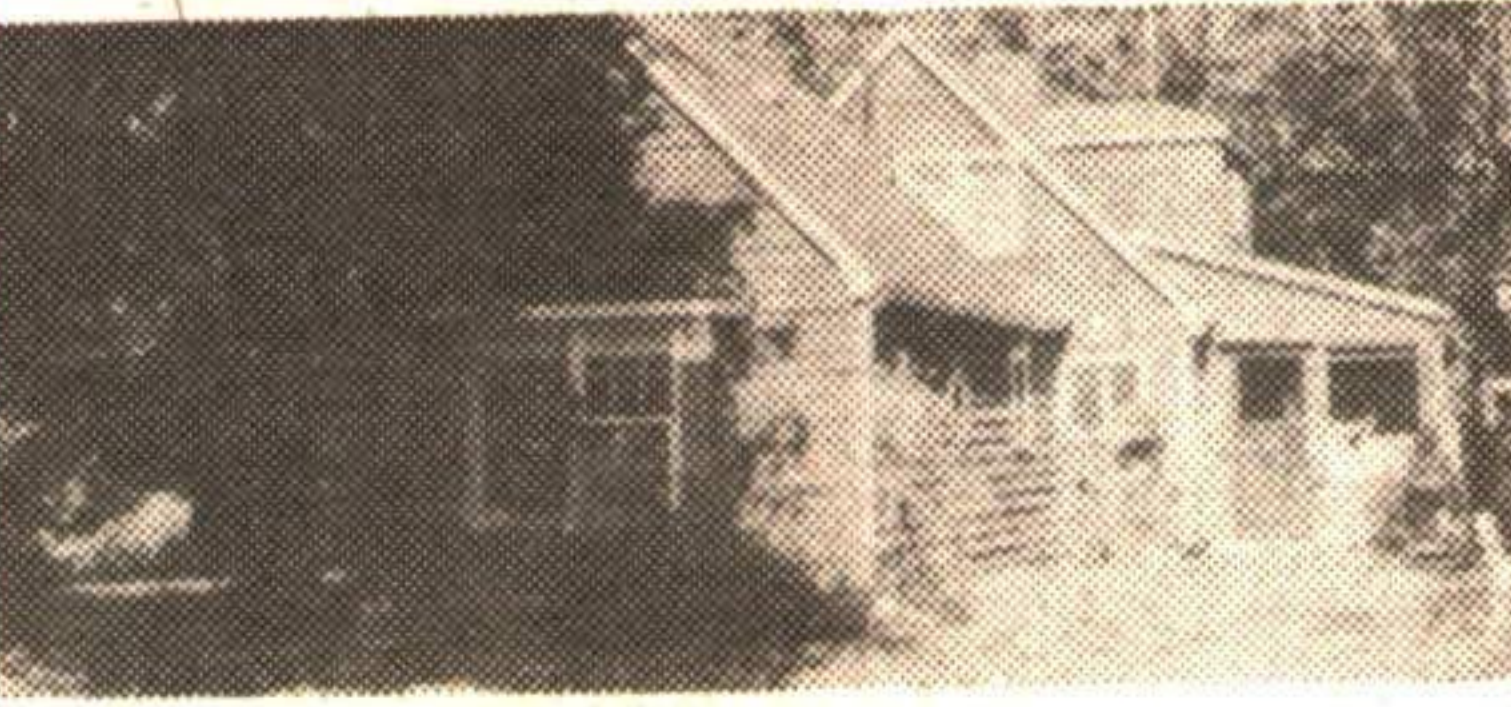
Sturdy home with light & airy basement boasting 2 TWO - one bdrm apartments. Professionally renovated. High efficiency furnace and roof resingled in '93. Paved driveway provides ample parking. Asking \$195,000. Call Bruce for more details. WW-285.



NEW

QUIET CUL-DE-SAC!

Excellent home on large pie shaped lot. Would you like central air, central vac, high efficiency furnace AND a finished room and 3 pc. downstairs? Call today and ask for Dean Jackson*. \$162,900. WW-289



8-1/2 ACRES - EDGE OF TOWN

Trade in your property on this secluded "ONE OF A KIND" wooded acreage. Spotless country home. Fabulous setting with sweeping lawns and the Credit River running right by the house - nature lover's paradise. Call now for complete details. WW-225

Bruce Elmslie is Committed to satisfaction :

When You Purchase Your Home Through Me And You Aren't Completely 100% Satisfied For Any Reason ... I'll Sell It For FREE ... It's Just That Simple,

"I wouldn't sell a house that I wouldn't buy myself"